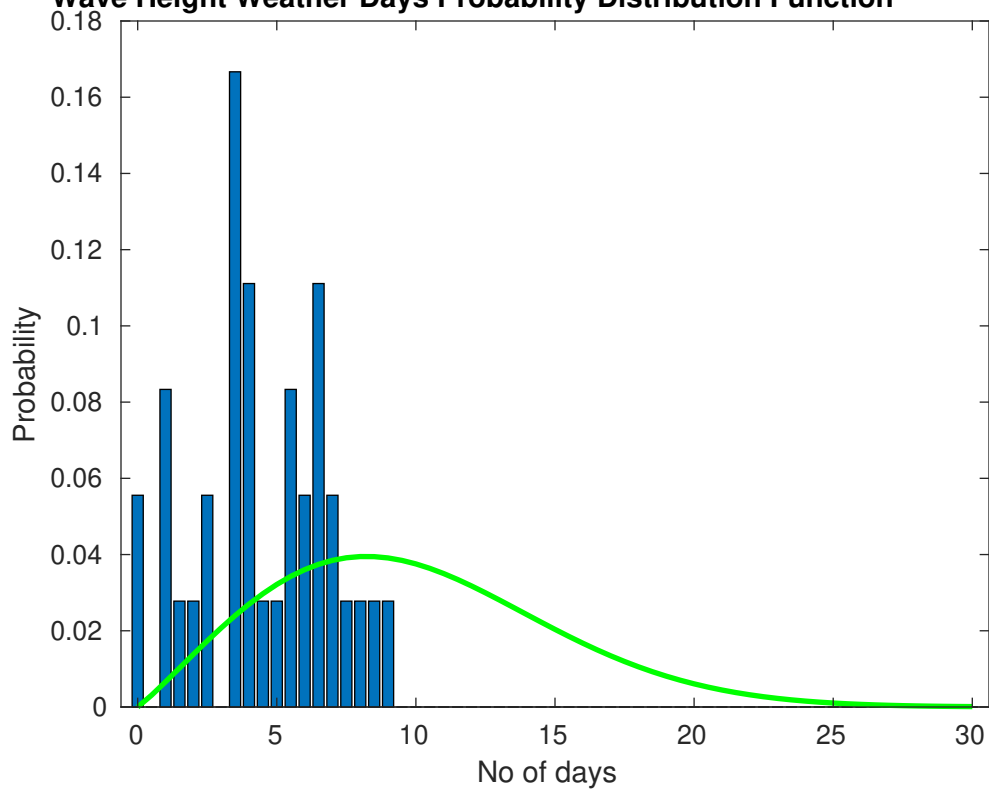
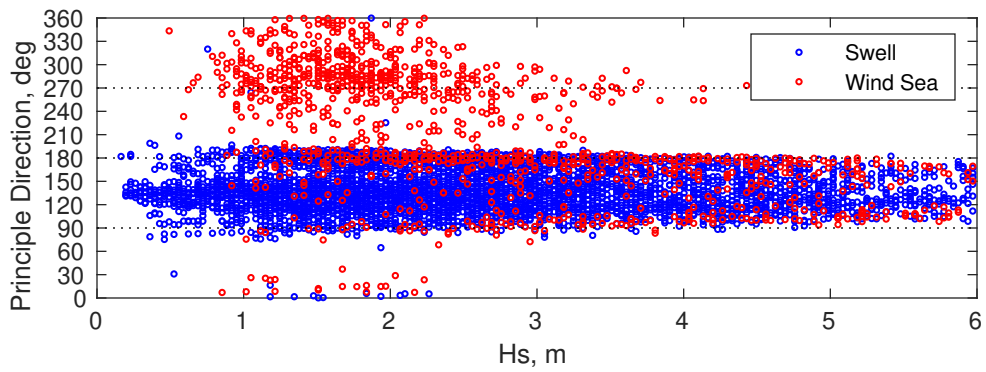
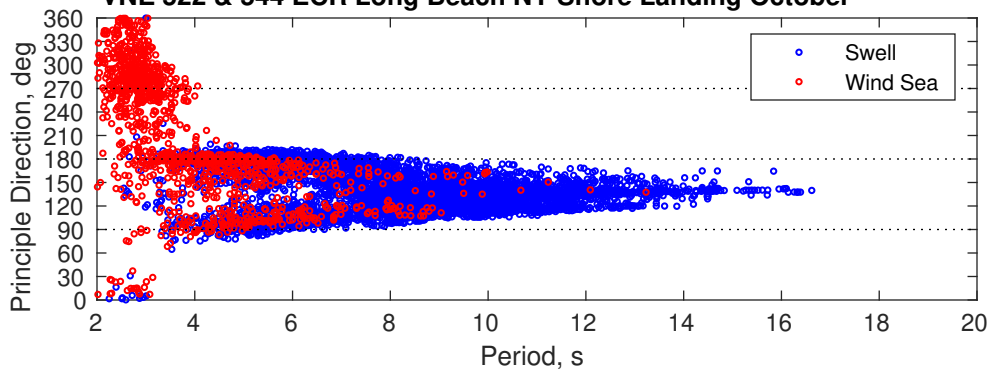


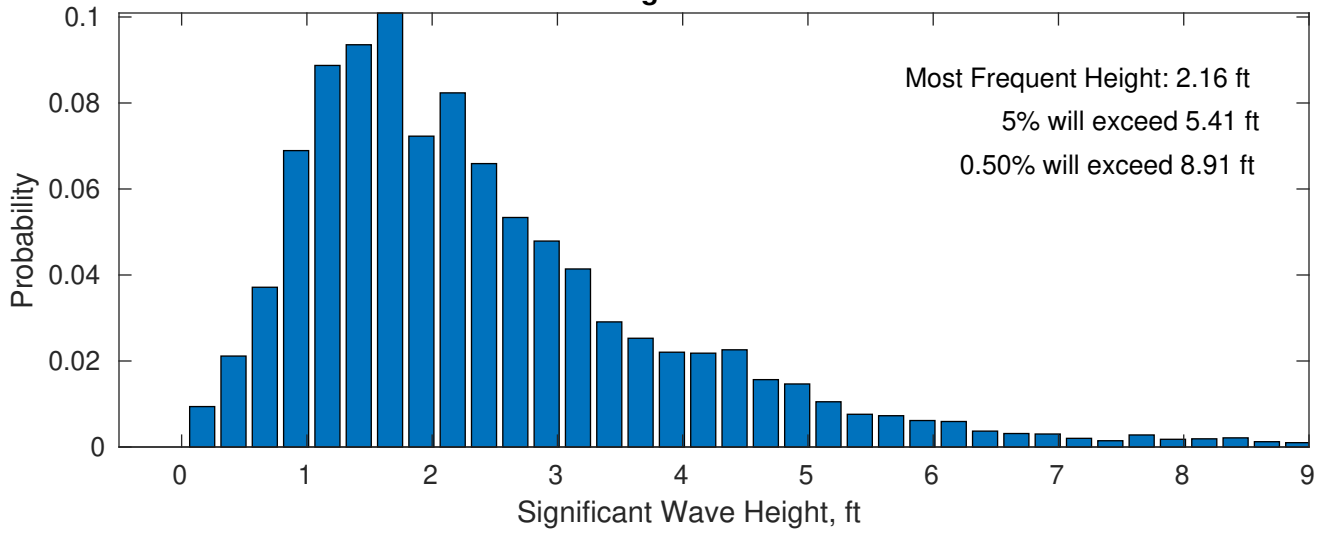
Wave Height Weather Days Probability Distribution Function



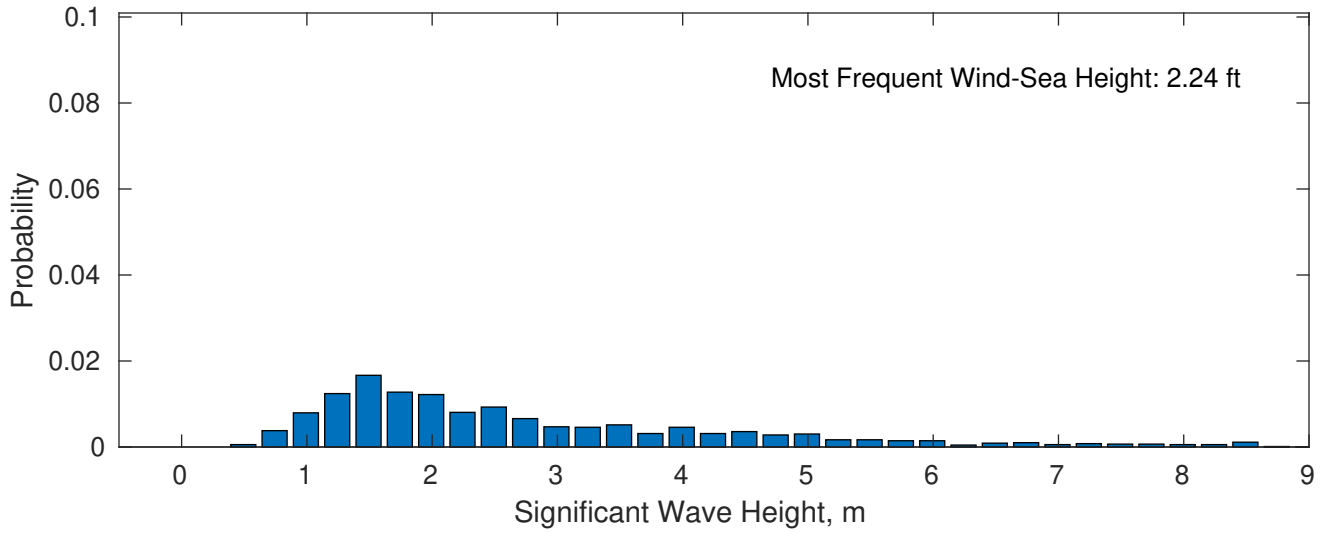
VNE 522 & 544 ECR Long Beach NY Shore Landing October



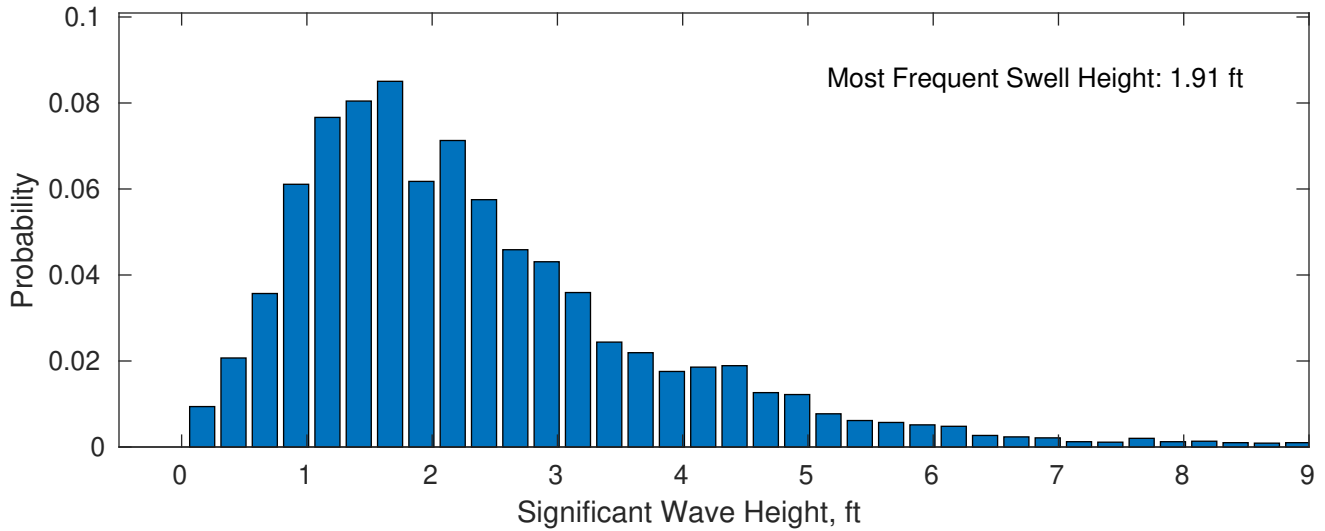
October Wave Height PDF: 1979 - 2015



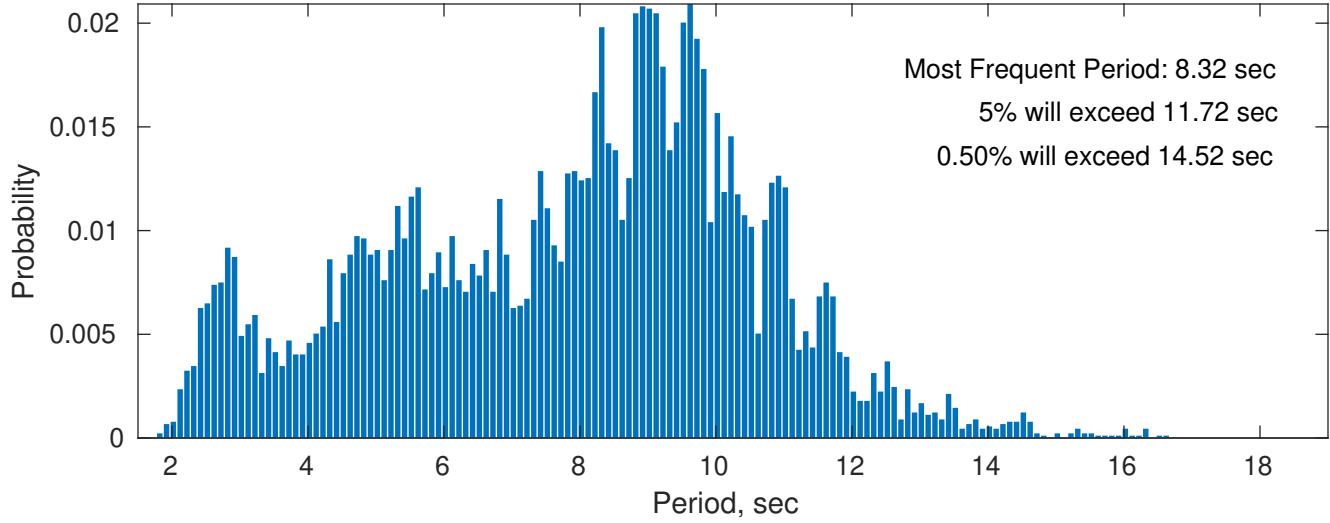
Wind-Sea: 14.12%



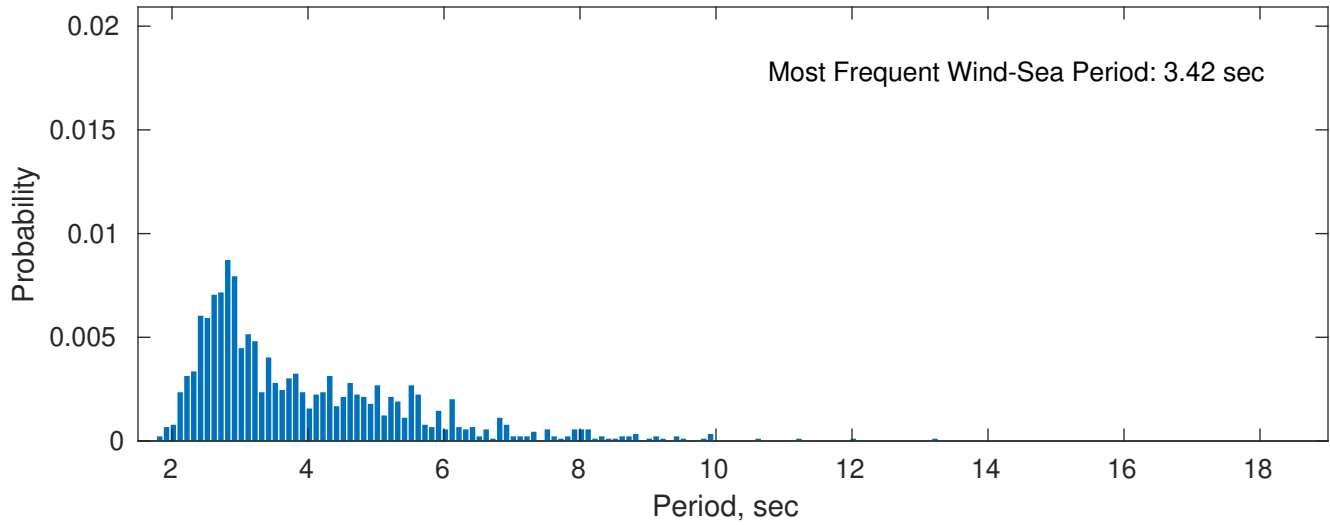
Swell: 85.88%



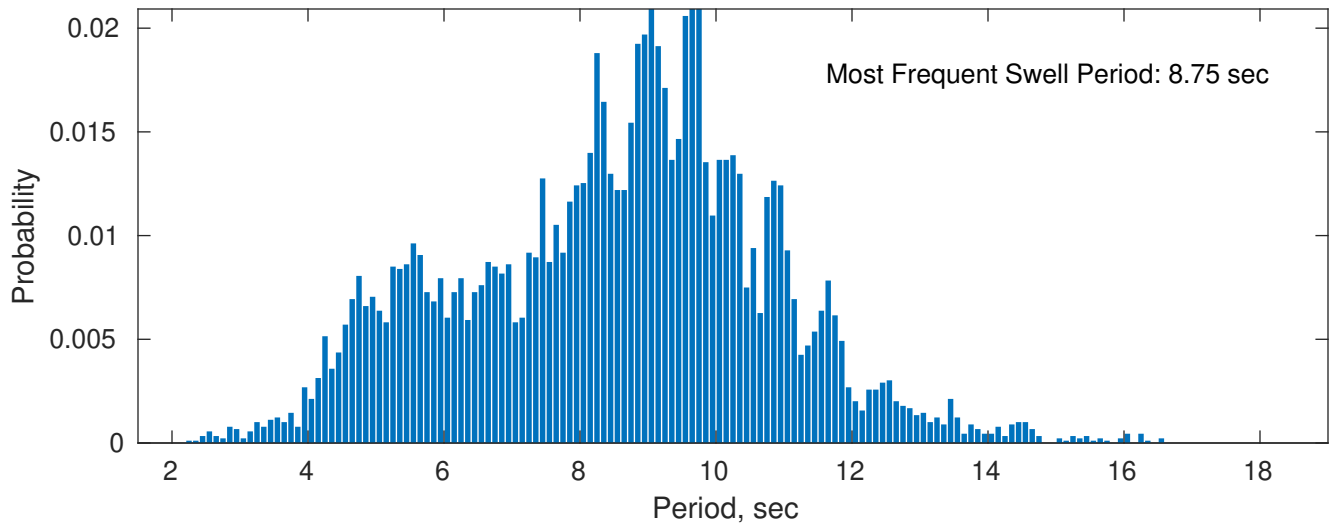
October Peak Wave Period PDF: 1979 - 2015



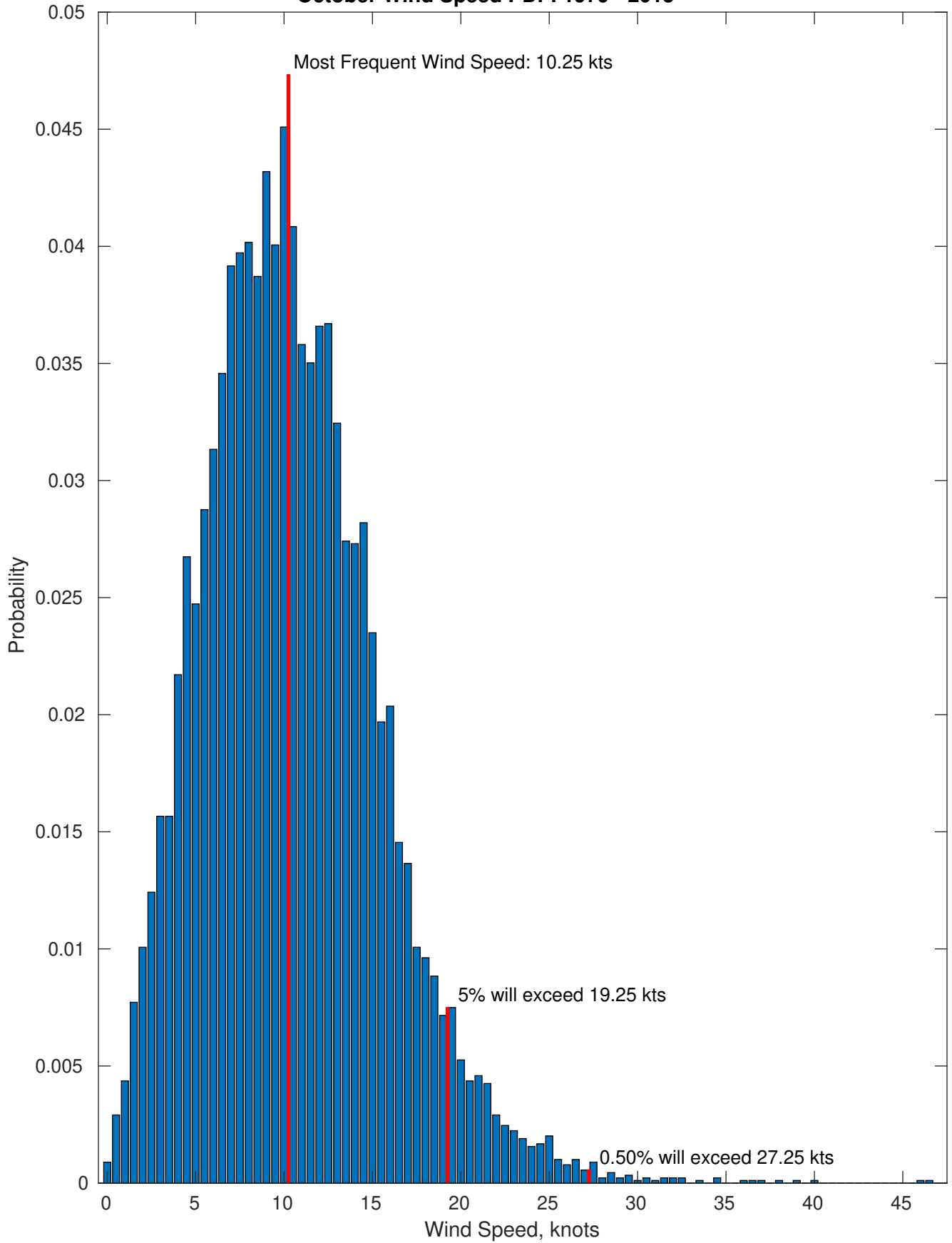
Wind-Sea: 14.12%



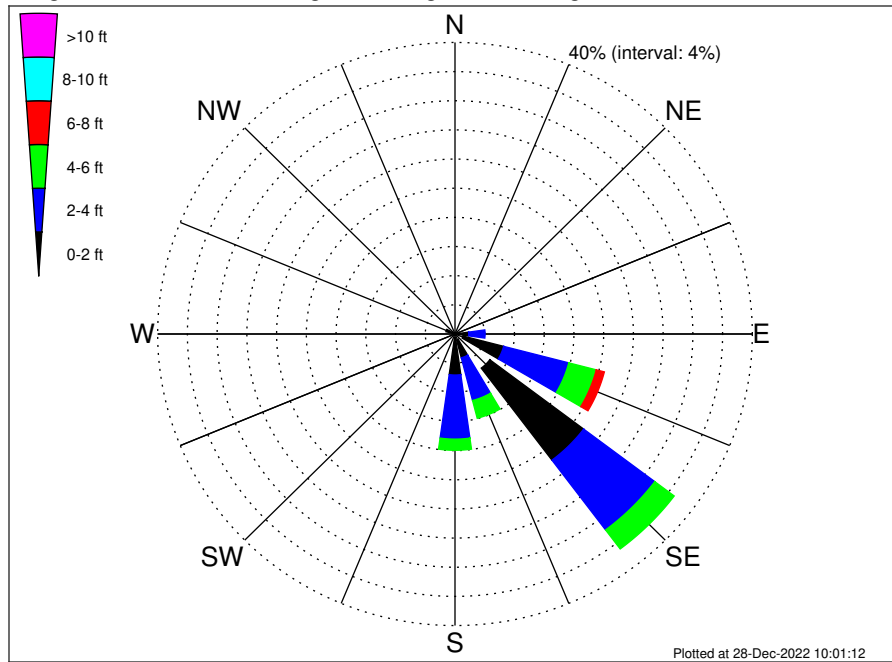
Swell: 85.88%



October Wind Speed PDF: 1979 - 2015



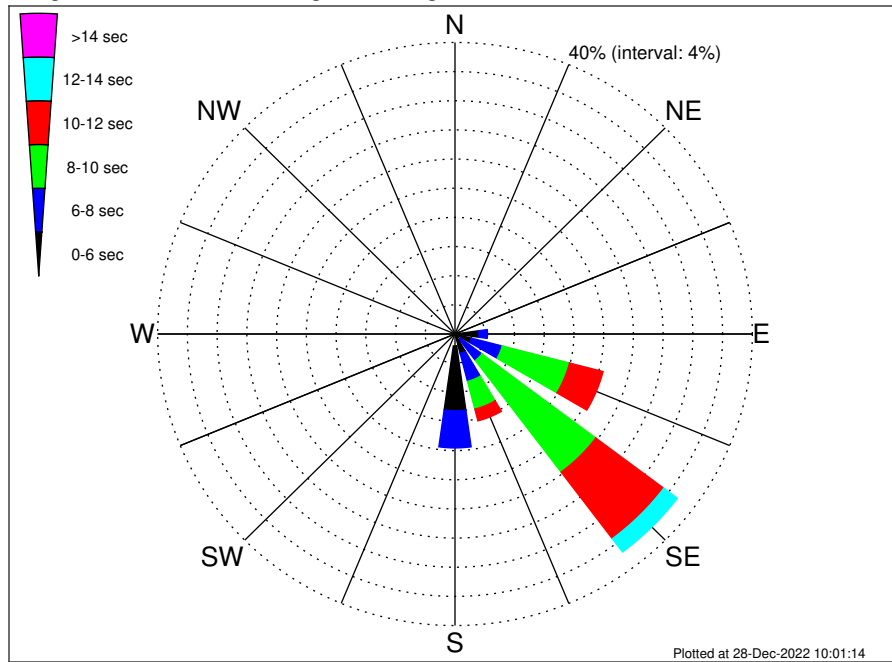
VNE 522 & 544 ECR Long Beach NY Shore Landing Climatological WaveHeight Rose for October: 1979 - 2015



Joint Frequency Distribution Table

	N	NNE	NE	ENE	E	ESE	SE	SSE	S	SSW	SW	WSW	W	WNW	NW	NNW	Total
calm	0.01	0.01	•	0.01	0.37	1.13	5.86	0.84	0.51	0.06	0.03	0.03	0.10	0.13	0.07	0.03	9.21
1 - 2 ft	0.37	0.12	0.01	0.08	1.48	5.63	15.81	2.53	5.11	0.26	0.21	0.37	0.87	1.13	0.57	0.35	34.90
2 - 4 ft	0.09	0.02	•	0.03	2.20	9.05	11.98	6.05	8.79	0.11	0.20	0.29	0.67	0.57	0.17	0.03	40.28
4 - 6 ft	•	•	•	•	0.55	3.83	3.27	2.52	1.53	•	•	0.02	0.03	•	•	•	11.75
6 - 8 ft	•	•	•	•	•	1.12	0.85	0.60	0.13	•	•	•	•	•	•	•	2.71
8 - 10 ft	•	•	•	•	•	0.29	0.36	0.23	0.01	•	•	•	•	•	•	•	0.90
10 - 12 ft	•	•	•	•	•	0.04	0.03	0.09	•	•	•	•	•	•	•	•	0.17
12 - 14 ft	•	•	•	•	•	•	0.01	0.02	•	•	•	•	•	•	•	•	0.03
14 - 16 ft	•	•	•	•	•	•	0.01	0.01	•	•	•	•	•	•	•	•	0.02
16 - 18 ft	•	•	•	•	•	•	•	0.01	•	•	•	•	•	•	•	•	0.01
> 18 ft	•	•	•	•	•	•	0.02	•	•	•	•	•	•	•	•	•	0.02
Total	0.47	0.16	0.01	0.12	4.60	21.09	38.21	12.91	16.10	0.43	0.45	0.72	1.68	1.84	0.81	0.41	100.00

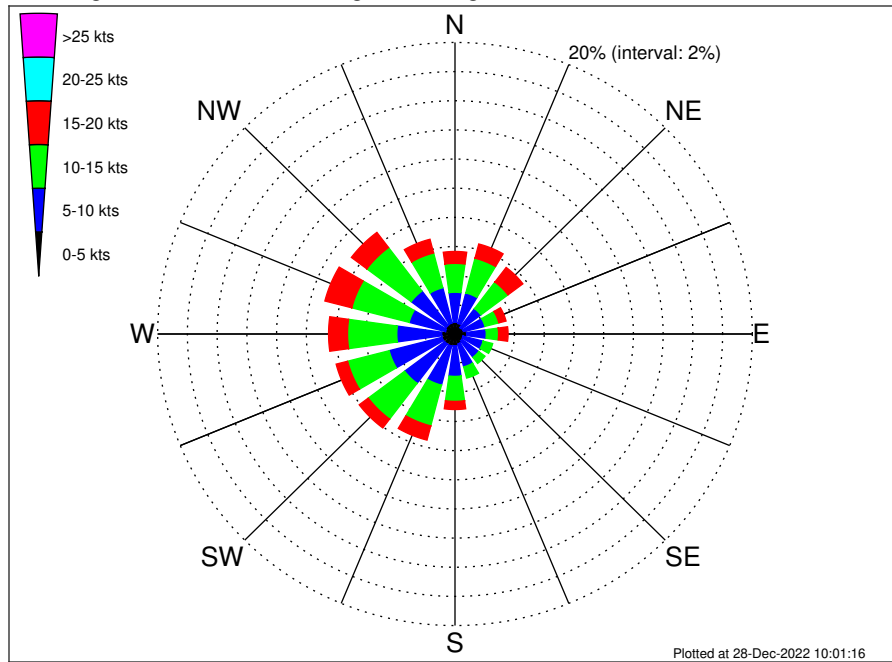
VNE 522 & 544 ECR Long Beach NY Shore Landing Climatological WavePeriod Rose for October: 1979 - 2015



Joint Frequency Distribution Table

	N	NNE	NE	ENE	E	ESE	SE	SSE	S	SSW	SW	WSW	W	WNW	NW	NNW	Total
calm
1 - 2 sec	0.01	.	.	0.01	0.02	.	.	.	0.04
2 - 4 sec	0.47	0.16	0.01	0.09	0.38	0.26	0.36	0.46	1.63	0.25	0.44	0.70	1.64	1.84	0.81	0.41	9.90
4 - 6 sec	.	.	.	0.03	2.84	2.04	0.62	2.28	8.88	0.18	0.01	.	0.01	.	.	.	16.90
6 - 8 sec	1.15	4.27	3.57	3.97	5.10	18.07
8 - 10 sec	0.22	9.34	19.18	3.93	0.41	33.09
10 - 12 sec	4.67	11.45	1.67	0.06	17.84
12 - 14 sec	0.50	2.27	0.51	3.29
14 - 16 sec	0.01	0.64	0.09	0.74
18 - 20 sec	0.13	0.13
22 - 24 sec
Total	0.47	0.16	0.01	0.12	4.60	21.09	38.21	12.91	16.10	0.43	0.45	0.72	1.68	1.84	0.81	0.41	100.00

VNE 522 & 544 ECR Long Beach NY Shore Landing Climatological Wind Rose for October: 1979 - 2015



Joint Frequency Distribution Table

	N	NNE	NE	ENE	E	ESE	SE	SSE	S	SSW	SW	WSW	W	WNW	NW	NNW	Total
calm	0.02	•	0.03	0.03	0.06	•	0.03	0.03	0.03	0.07	0.02	0.01	0.02	•	•	0.01	0.38
0 - 5 kts	0.78	0.75	0.51	0.56	0.73	0.56	0.56	0.67	0.77	0.78	0.84	0.88	0.87	0.66	0.74	0.76	11.44
5 - 10 kts	2.06	2.16	1.63	1.49	1.32	1.40	1.41	1.62	2.10	2.77	3.38	3.68	3.02	2.53	2.95	2.51	36.04
10 - 15 kts	1.98	2.46	2.28	0.96	0.83	0.66	0.53	0.79	1.71	2.89	3.07	2.89	3.31	3.98	3.74	2.46	34.54
15 - 20 kts	0.82	1.01	1.25	0.50	0.64	0.21	0.17	0.36	0.56	1.01	0.76	0.79	1.28	1.87	1.30	0.97	13.49
20 - 25 kts	0.20	0.40	0.44	0.23	0.10	0.11	0.10	0.13	0.19	0.11	0.19	0.22	0.28	0.19	0.11	0.10	3.12
25 - 30 kts	0.04	0.07	0.17	0.13	0.02	0.02	0.01	0.07	•	•	0.01	0.08	0.06	0.06	•	0.01	0.75
30 - 35 kts	•	0.01	0.03	•	0.04	0.01	•	0.01	0.03	•	•	•	•	•	•	•	0.15
35 - 40 kts	0.01	0.01	0.01	•	0.01	0.01	•	•	•	•	•	•	•	•	•	•	0.06
40 - 45 kts	•	•	•	•	•	•	0.01	•	•	•	•	•	•	•	•	•	0.01
45 - 50 kts	•	•	0.01	•	•	•	0.01	•	•	•	•	•	•	•	•	•	0.02
Total	5.92	6.87	6.38	3.92	3.75	2.99	2.83	3.69	5.40	7.63	8.27	8.56	8.84	9.29	8.84	6.83	100.00