

VNE 522 & 544 ECR Long Beach NY Shore Landing - September

Latitude: 40.56 N Longitude: 73.70 W

Weather Days

Wave Height > 4.0 ft Mean: 3.1 days Range: 0.0 - 6.2 days p50:4 days p75:2.5 days p90:1 days

Wave Height > 5.0 ft Mean: 1.4 days Range: 0.0 - 3.1 days p50:2 days p75:0.5 days p90:0.5 days

Wave Height > 6.0 ft Mean: 0.7 days Range: 0.0 - 1.8 days p50:1 days p75:0.5 days p90:0.5 days

Wind Speed > 20.0 knots Mean: 0.4 days Range: 0.0 - 0.8 days p50:0.5 days p75:0.5 days p90:0.5 days

Wind Speed > 25.0 knots Mean: 0.1 days Range: 0.0 - 0.3 days p50:0.5 days p75:0.5 days p90:0.5 days

Wind Speed > 30.0 knots Mean: 0.0 days Range: 0.0 - 0.1 days p50:0.5 days p75:0.5 days p90:0.5 days

Working Window Probability

Wave Height < 4.0 ft 3 days or longer: 71%

5 days or longer: 38%

7 days or longer: 26%

Wave Height < 5.0 ft 3 days or longer: 84%

5 days or longer: 61%

7 days or longer: 55%

Wave Height < 6.0 ft 3 days or longer: 86%

5 days or longer: 66%

7 days or longer: 60%

Waves

Mean Height: 2 - 4 ft

The wave heights will occasionally reach 8 - 10 ft, but rarely higher.

Mean Period: 8 - 10 sec

The wave periods will occasionally reach 14 - 16 sec, but rarely longer.

Principle Direction, from: SE

WindSea/Swell: 7% / 93%

Winds

Mean Speed: 5 - 10 kts

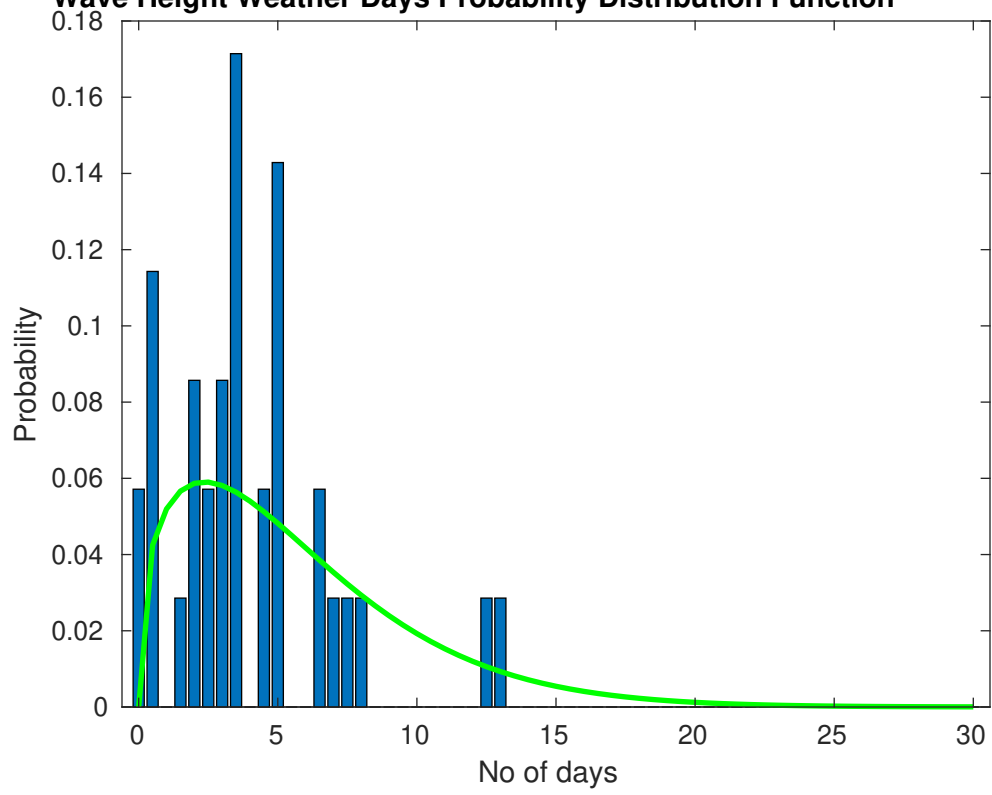
The winds will occasionally reach 20 - 25 kts, but rarely greater.

Principle Direction, from: SSW

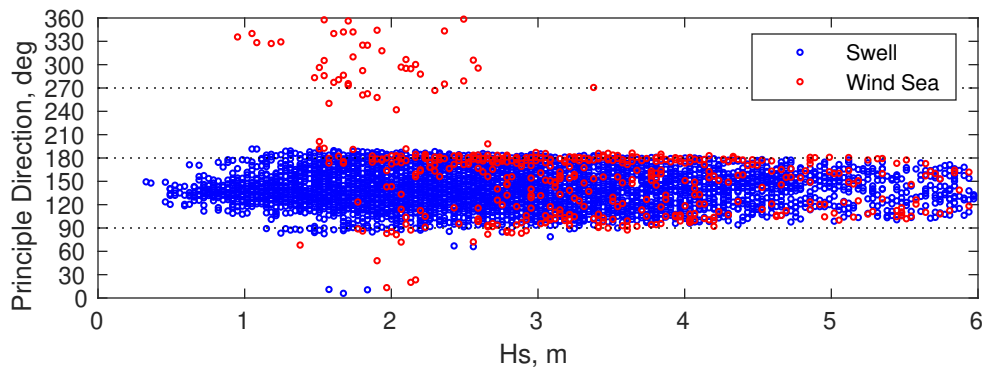
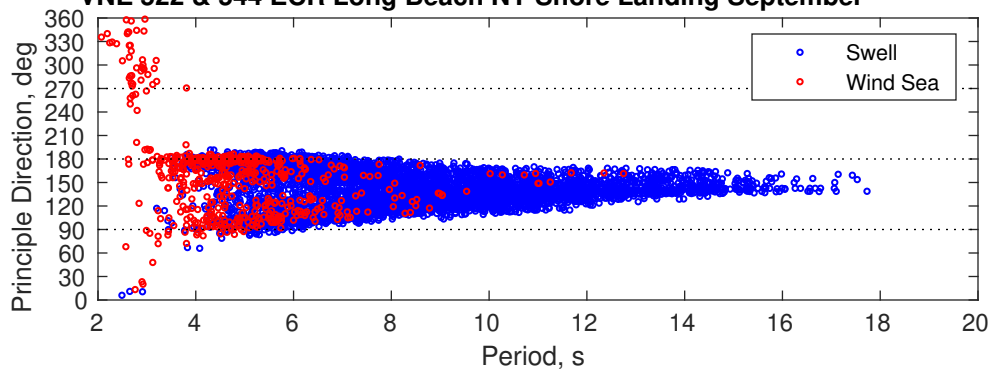
Severe Storms

Severe storms with gale force winds and extreme waves are not expected during this month.

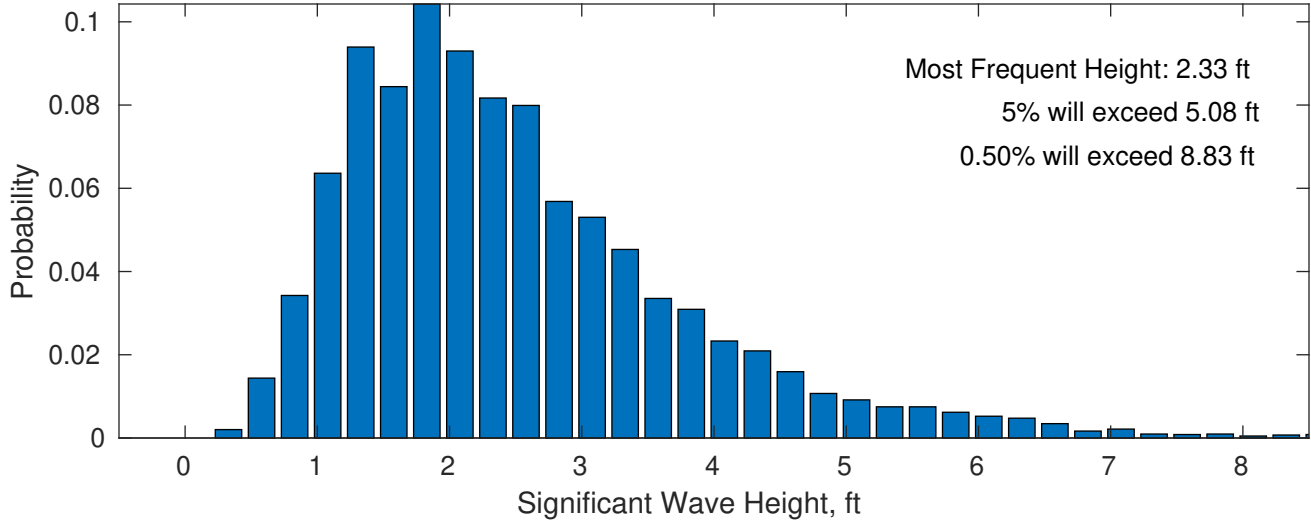
Wave Height Weather Days Probability Distribution Function



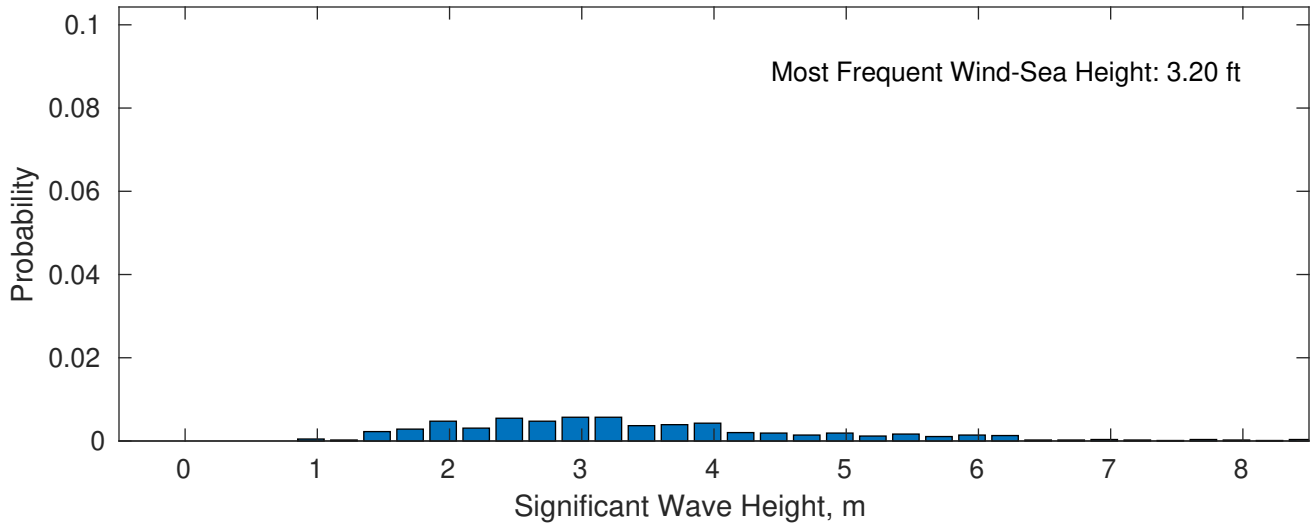
VNE 522 & 544 ECR Long Beach NY Shore Landing September



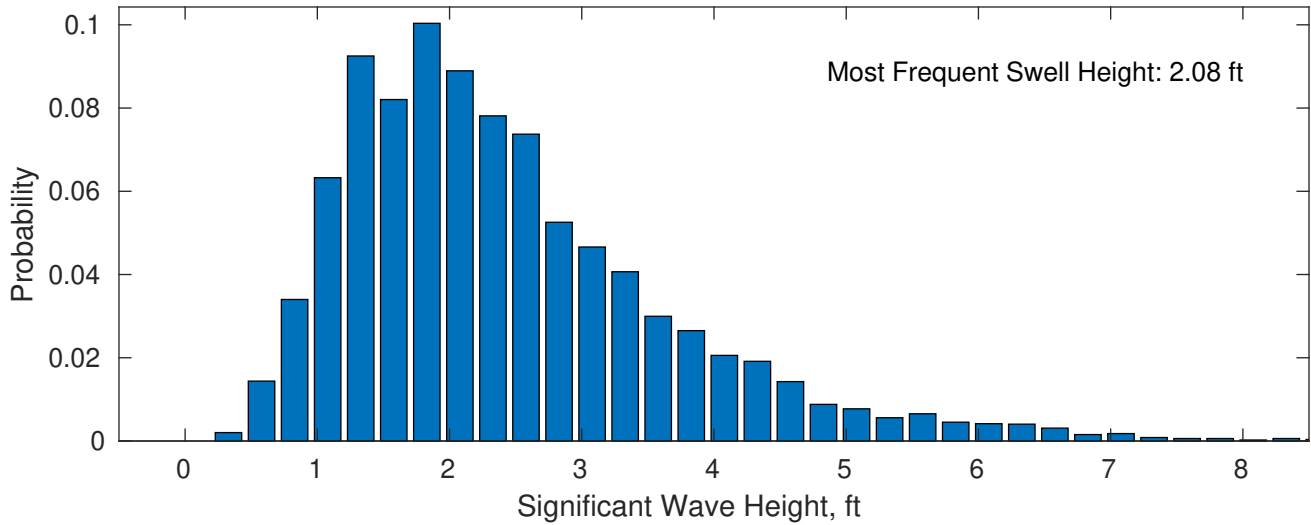
September Wave Height PDF: 1979 - 2015



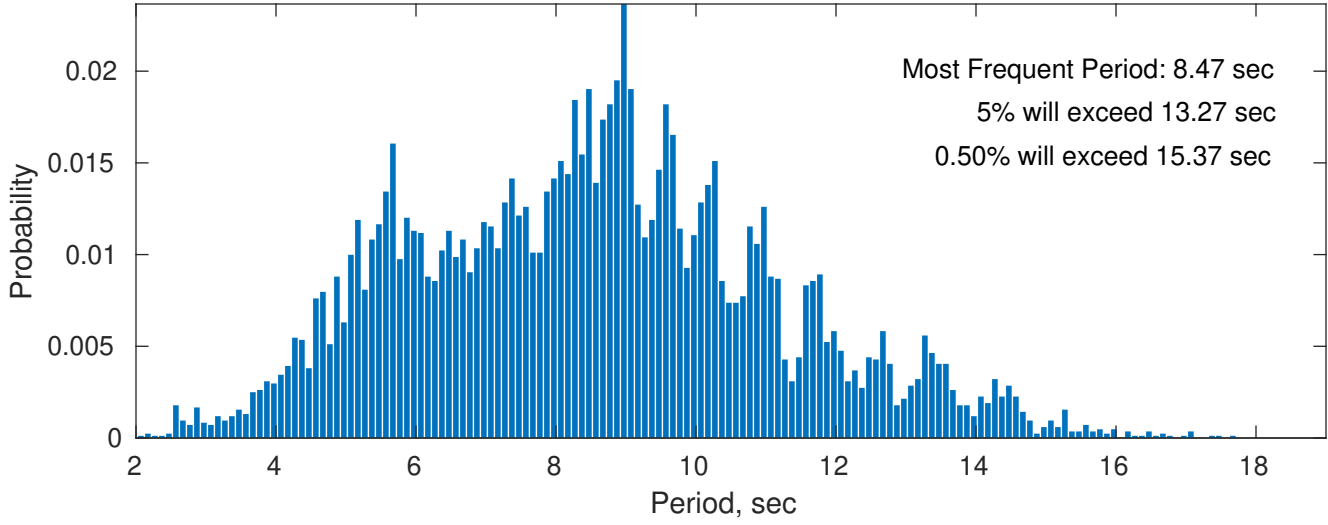
Wind-Sea: 6.59%



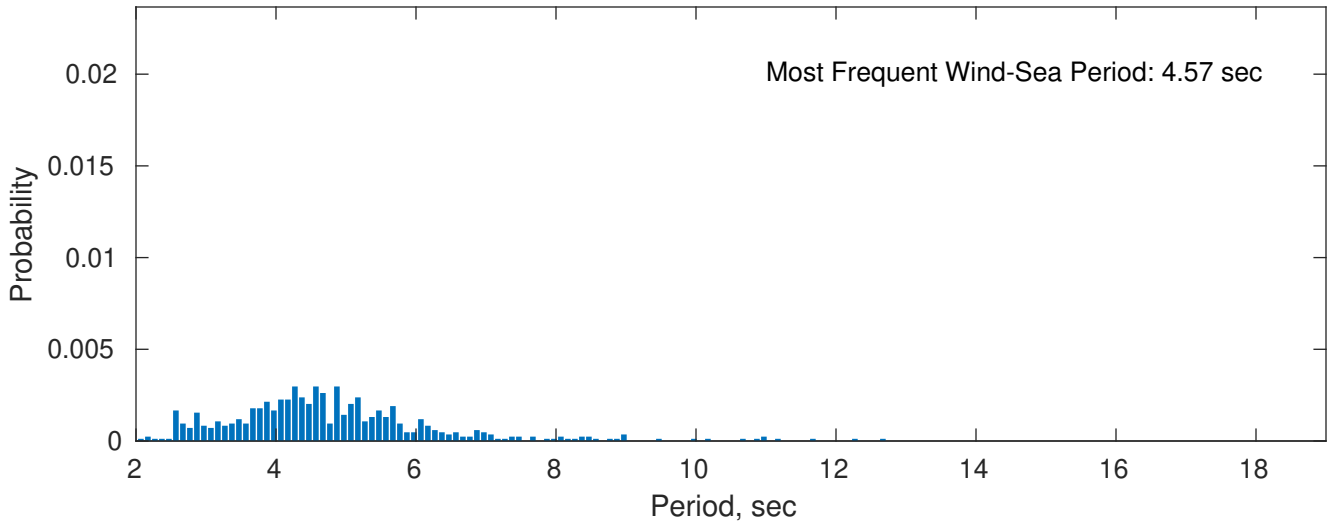
Swell: 93.41%



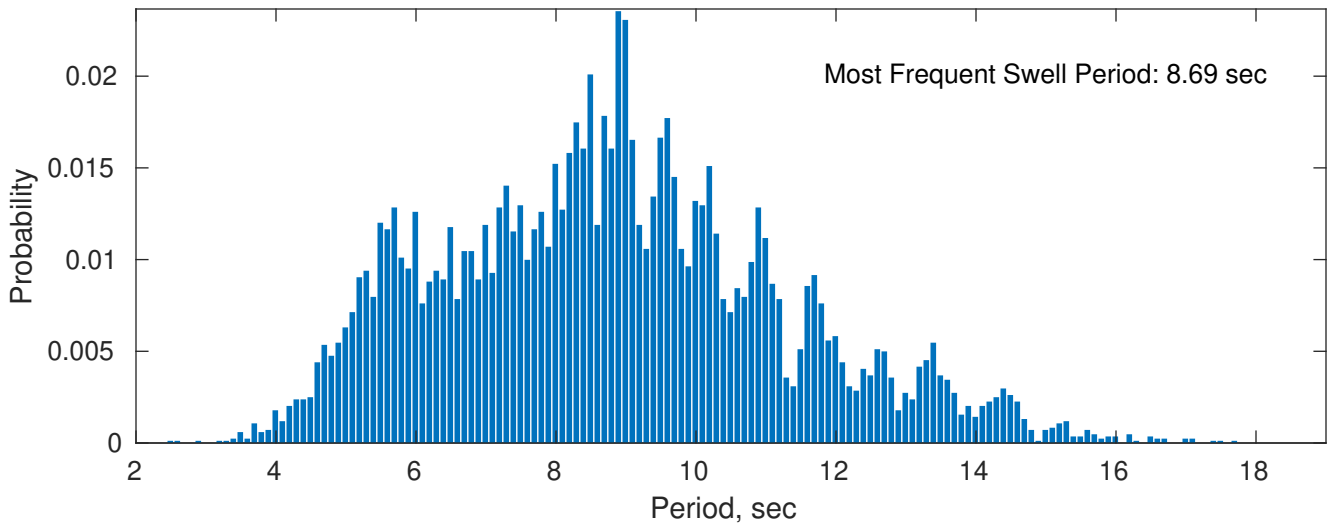
September Peak Wave Period PDF: 1979 - 2015



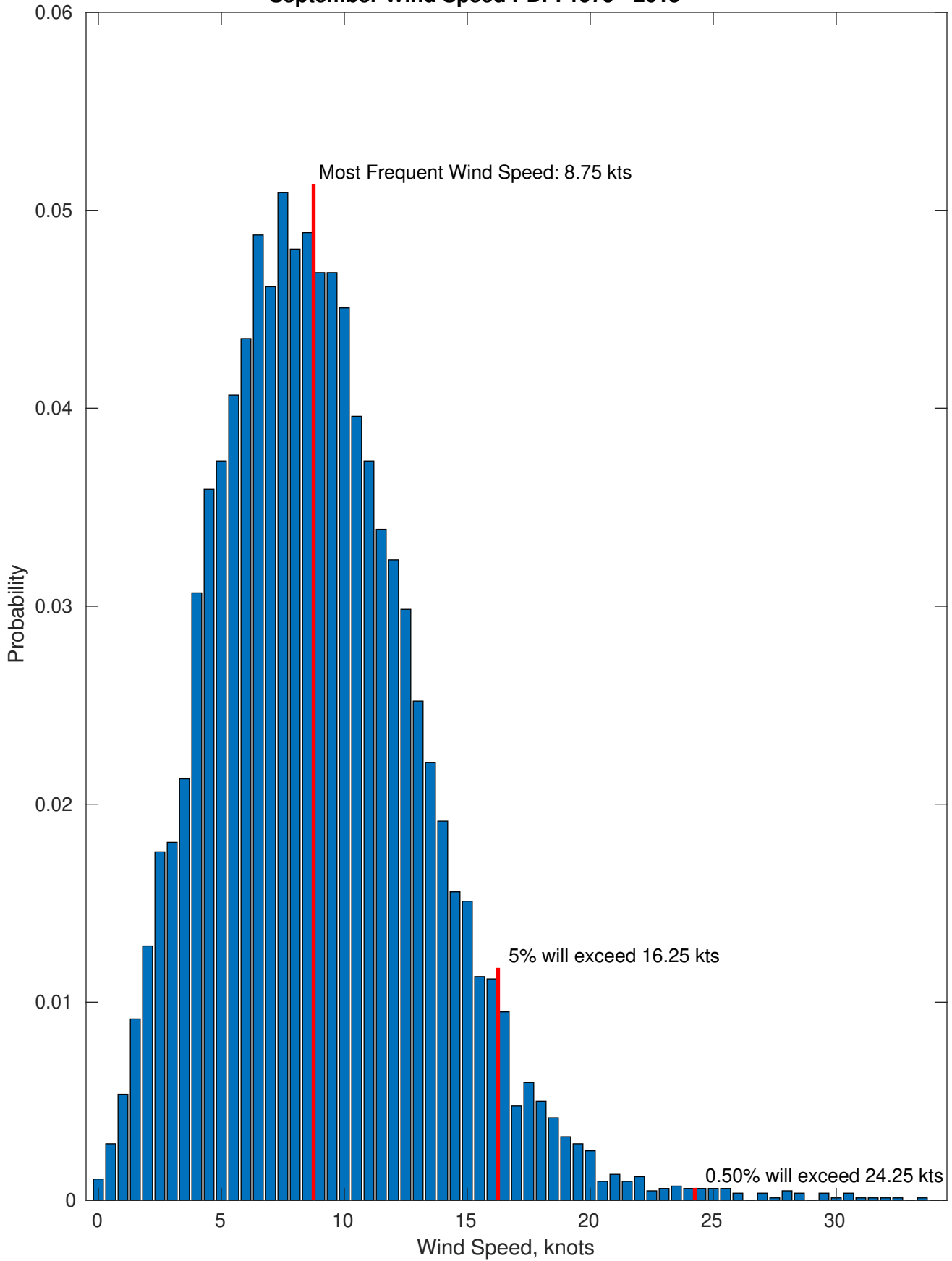
Wind-Sea: 6.59%



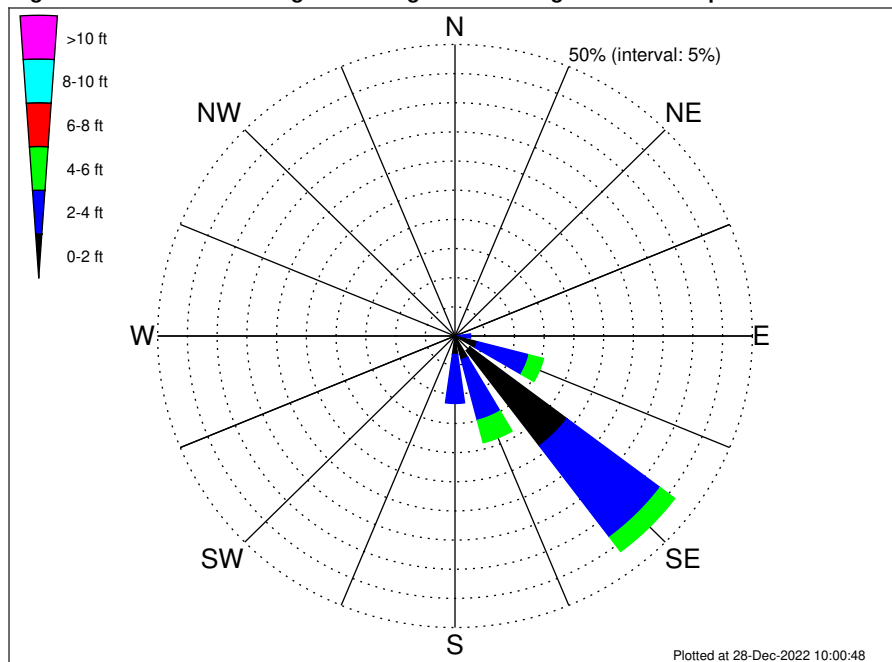
Swell: 93.41%



September Wind Speed PDF: 1979 - 2015



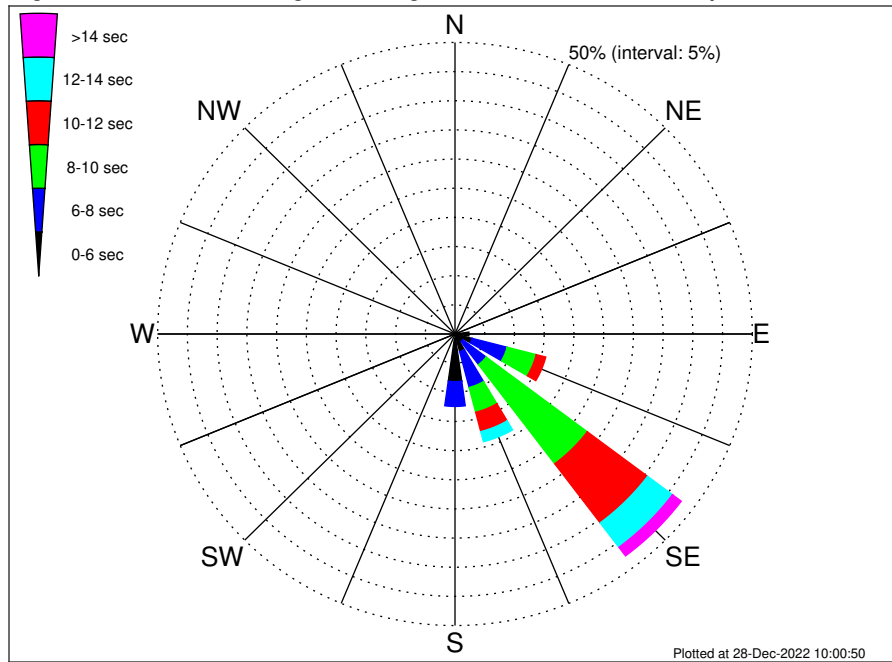
VNE 522 & 544 ECR Long Beach NY Shore Landing Climatological WaveHeight Rose for September: 1979 - 2015



Joint Frequency Distribution Table

	N	NNE	NE	ENE	E	ESE	SE	SSE	S	SSW	SW	WSW	W	WNW	NW	NNW	Total
calm	•	•	•	•	•	0.29	3.12	0.36	0.08	•	•	•	•	•	•	0.01	3.85
1 - 2 ft	0.06	0.01	0.01	0.01	0.51	3.60	20.49	3.84	3.10	0.06	•	0.02	0.07	0.06	0.06	0.10	32.01
2 - 4 ft	0.01	0.02	•	0.05	2.13	8.99	19.60	10.75	8.38	0.02	•	0.01	0.05	0.07	0.02	0.01	50.12
4 - 6 ft	•	•	•	•	0.26	2.51	3.08	3.97	1.18	•	•	•	•	•	•	•	11.00
6 - 8 ft	•	•	•	•	0.01	0.32	1.00	0.73	0.14	•	•	•	•	•	•	•	2.20
8 - 10 ft	•	•	•	•	•	0.07	0.25	0.17	0.02	•	•	•	•	•	•	•	0.51
10 - 12 ft	•	•	•	•	•	0.04	0.12	0.06	0.01	•	•	•	•	•	•	•	0.23
12 - 14 ft	•	•	•	•	•	•	•	0.06	•	•	•	•	•	•	•	•	0.06
14 - 16 ft	•	•	•	•	•	•	•	0.01	•	•	•	•	•	•	•	•	0.01
16 - 18 ft	•	•	•	•	•	•	•	0.01	•	•	•	•	•	•	•	•	0.01
> 18 ft	•	•	•	•	•	•	•	•	•	•	•	•	•	•	•	•	•
Total	0.07	0.04	0.01	0.06	2.91	15.81	47.65	19.95	12.93	0.08	•	0.04	0.12	0.13	0.08	0.12	100.00

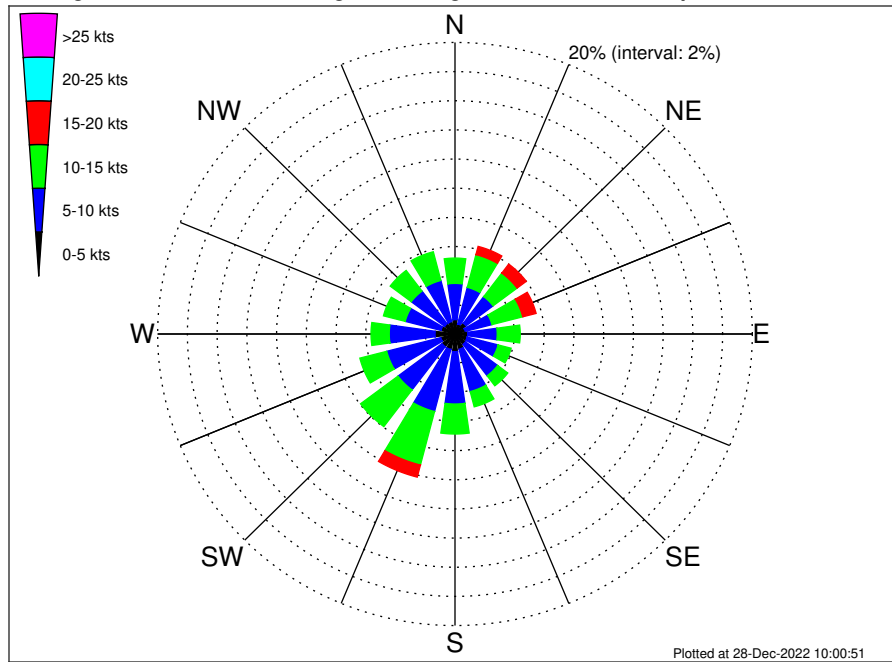
VNE 522 & 544 ECR Long Beach NY Shore Landing Climatological WavePeriod Rose for September: 1979 - 2015



Joint Frequency Distribution Table

	N	NNE	NE	ENE	E	ENE	SE	SSE	S	SSW	SW	WSW	W	WNW	NW	NNW	Total
calm
1 - 2 sec
2 - 4 sec	0.07	0.04	0.01	0.05	0.18	0.19	0.13	0.27	0.77	0.06	.	0.04	0.12	0.13	0.08	0.12	2.26
4 - 6 sec	.	.	.	0.01	2.18	2.77	1.50	2.85	7.40	0.02	16.73
6 - 8 sec	0.56	6.10	4.93	6.34	4.26	22.19
8 - 10 sec	5.05	21.30	4.40	0.48	31.22
10 - 12 sec	1.65	12.70	3.42	0.02	17.80
12 - 14 sec	0.05	5.24	1.80	7.09
14 - 16 sec	1.68	0.78	2.46
18 - 20 sec	0.17	0.08	0.25
22 - 24 sec
Total	0.07	0.04	0.01	0.06	2.91	15.81	47.65	19.95	12.93	0.08	.	0.04	0.12	0.13	0.08	0.12	100.00

VNE 522 & 544 ECR Long Beach NY Shore Landing Climatological Wind Rose for September: 1979 - 2015



Joint Frequency Distribution Table

	N	NNE	NE	ENE	E	ESE	SE	SSE	S	SSW	SW	WSW	W	WNW	NW	NNW	Total
calm	0.02	0.01	0.01	0.05	0.06	0.01	0.02	0.02	0.04	0.04	0.01	0.04	•	0.02	0.02	0.01	0.39
0 - 5 kts	0.96	0.70	0.92	0.67	0.80	0.83	0.87	1.06	1.18	1.06	1.08	0.95	1.34	0.95	0.86	0.87	15.09
5 - 10 kts	2.49	2.59	2.28	1.85	1.99	2.15	2.70	3.00	3.59	4.40	3.71	3.76	3.08	2.49	2.81	2.91	45.79
10 - 15 kts	1.74	2.32	2.02	2.14	1.55	0.90	0.86	1.08	2.06	3.79	3.15	1.87	1.22	1.51	1.77	2.03	30.01
15 - 20 kts	0.39	0.58	0.77	0.93	0.46	0.20	0.17	0.29	0.50	0.86	0.39	0.20	0.33	0.40	0.50	0.32	7.30
20 - 25 kts	0.01	0.10	0.11	0.23	0.11	0.02	0.02	0.05	0.12	0.05	0.01	0.02	0.01	0.06	0.07	•	0.99
25 - 30 kts	•	0.01	0.04	0.05	0.08	0.02	0.02	•	0.06	0.01	0.01	•	•	0.01	•	•	0.32
30 - 35 kts	•	•	•	0.01	0.06	0.01	•	0.01	•	•	•	0.01	•	•	•	•	0.11
35 - 40 kts	•	•	•	•	•	•	•	•	•	•	•	•	•	•	•	•	•
40 - 45 kts	•	•	•	•	•	•	•	•	•	•	•	•	•	•	•	•	•
45 - 50 kts	•	•	•	•	•	•	•	•	•	•	•	•	•	•	•	•	•
Total	5.61	6.31	6.15	5.92	5.10	4.16	4.66	5.51	7.54	10.20	8.37	6.85	5.99	5.45	6.03	6.15	100.00