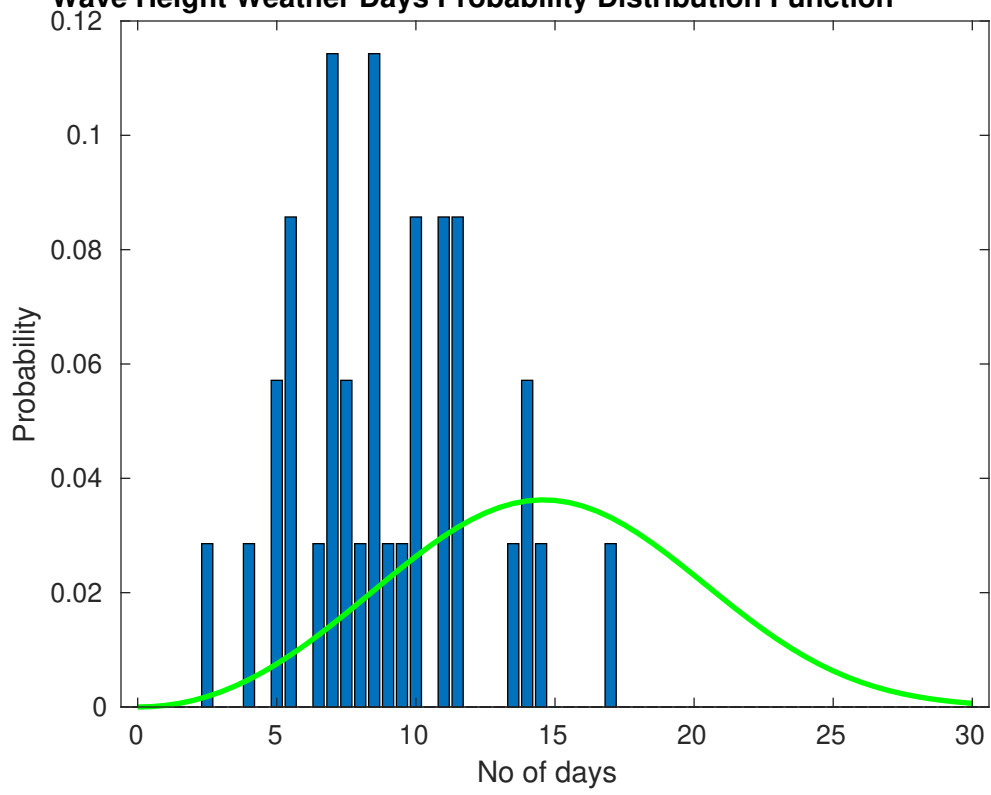
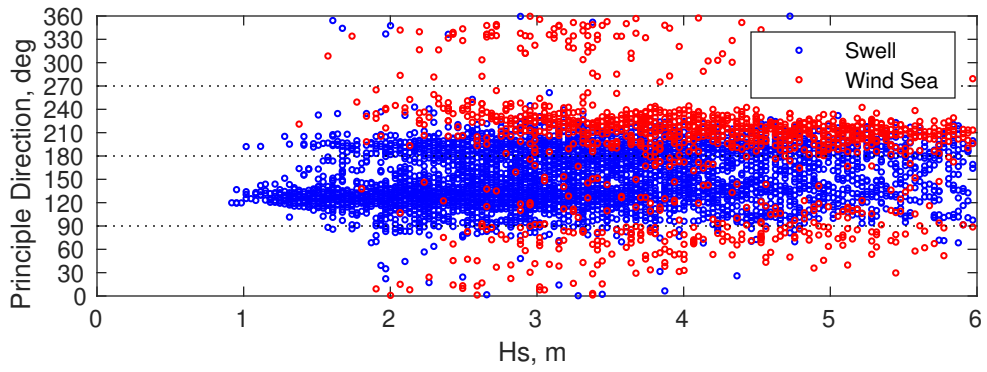
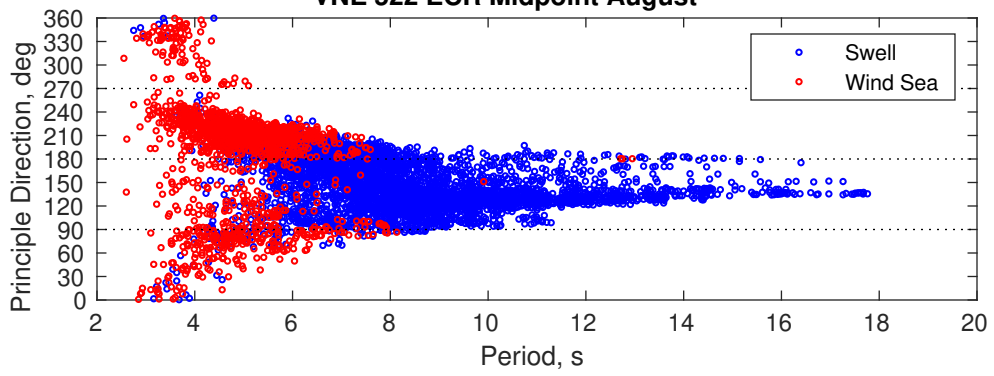


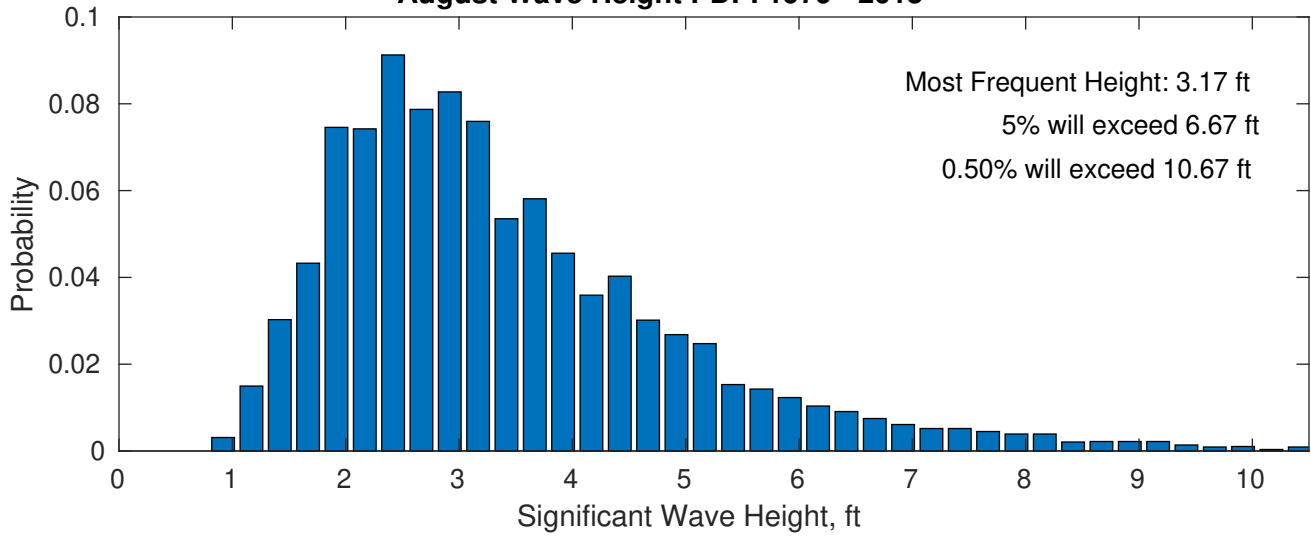
Wave Height Weather Days Probability Distribution Function



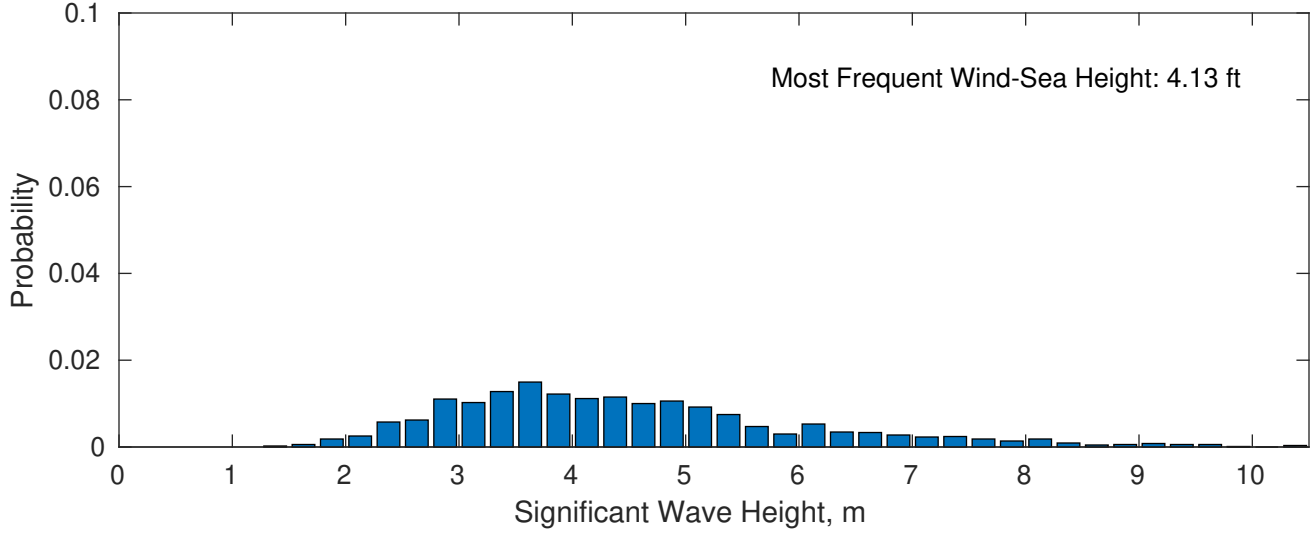
VNE 522 ECR Midpoint August



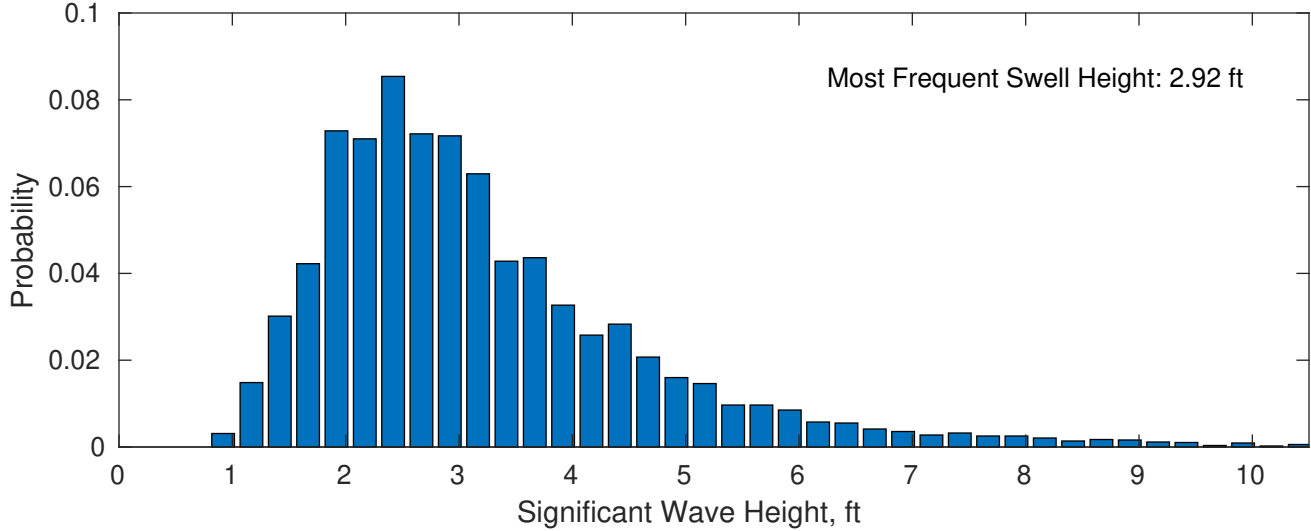
August Wave Height PDF: 1979 - 2015



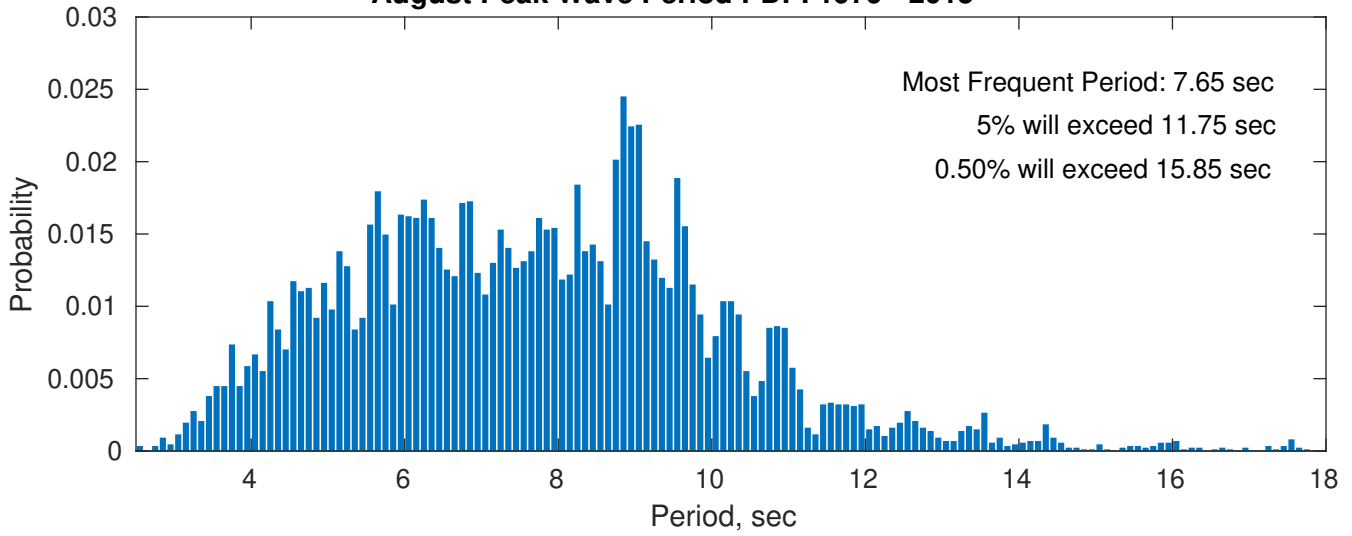
Wind-Sea: 17.58%



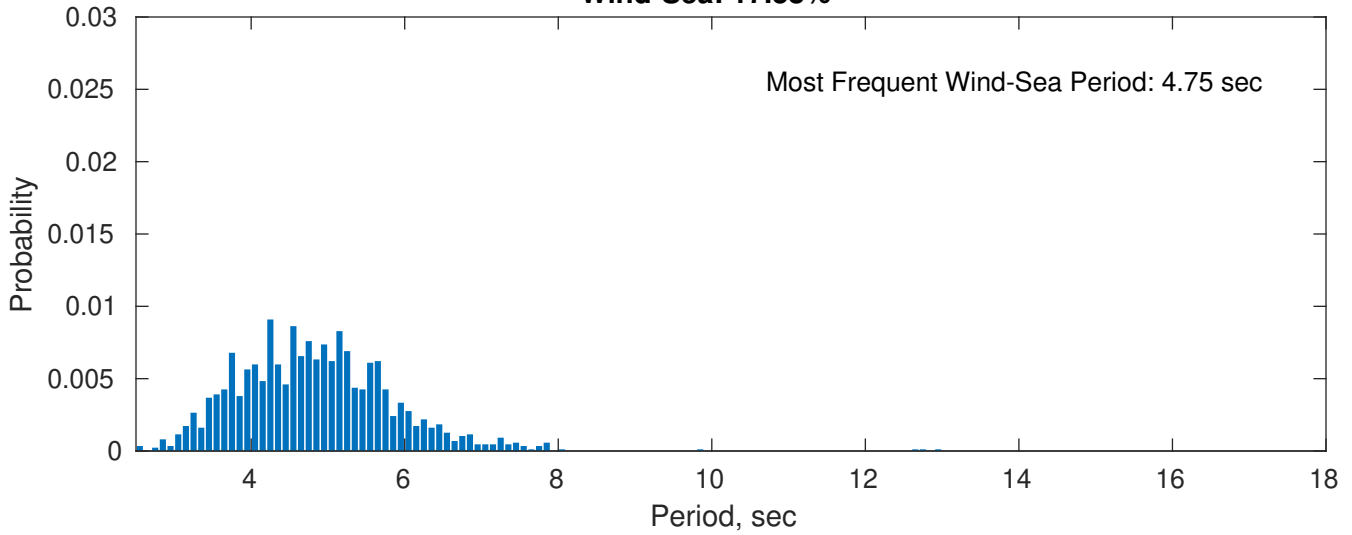
Swell: 82.42%



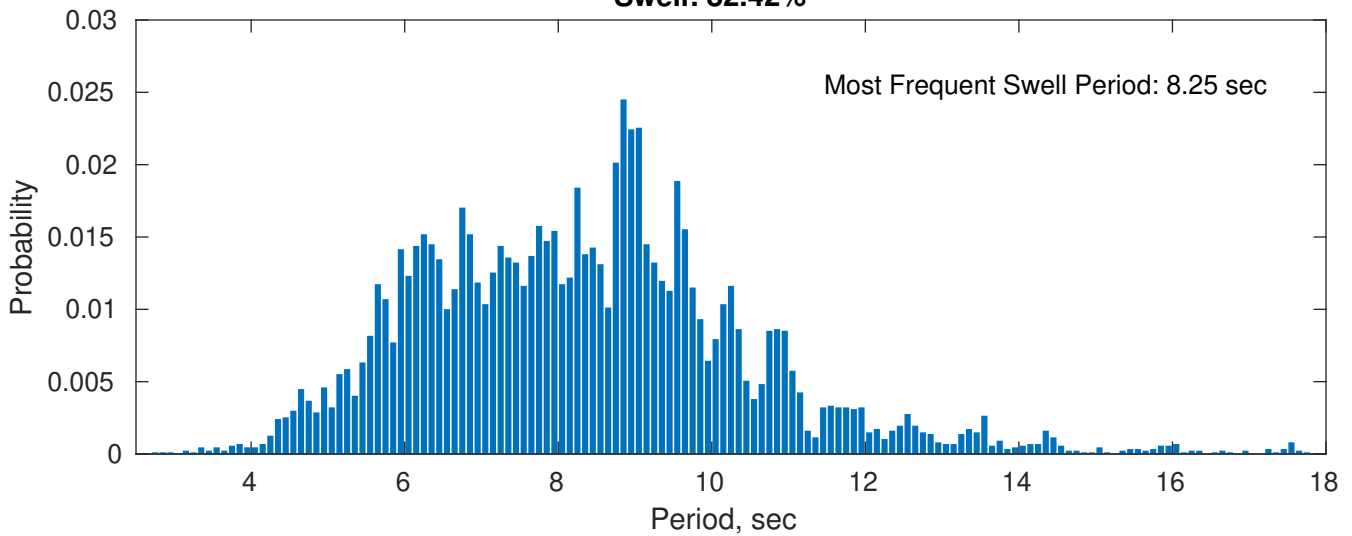
August Peak Wave Period PDF: 1979 - 2015



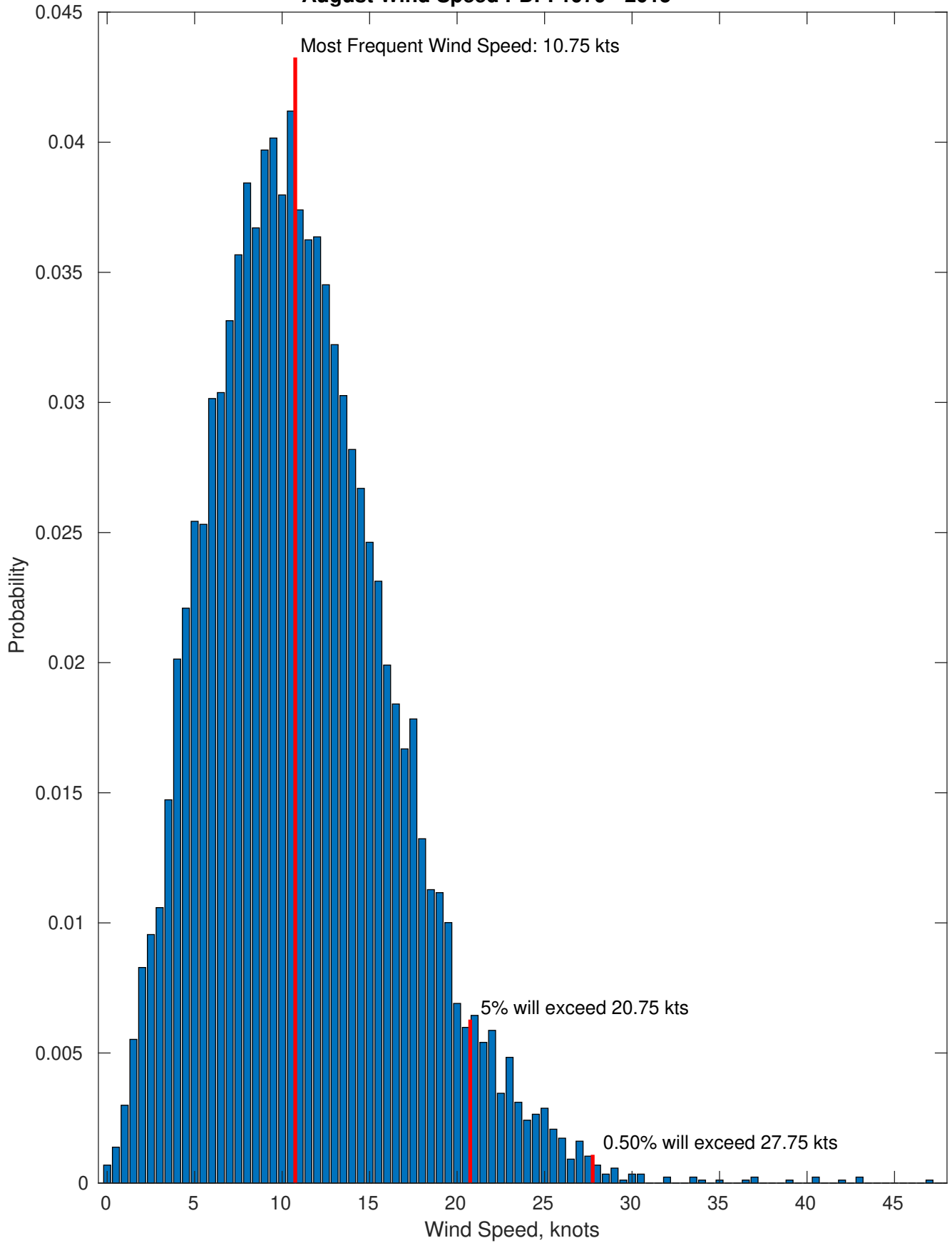
Wind-Sea: 17.58%



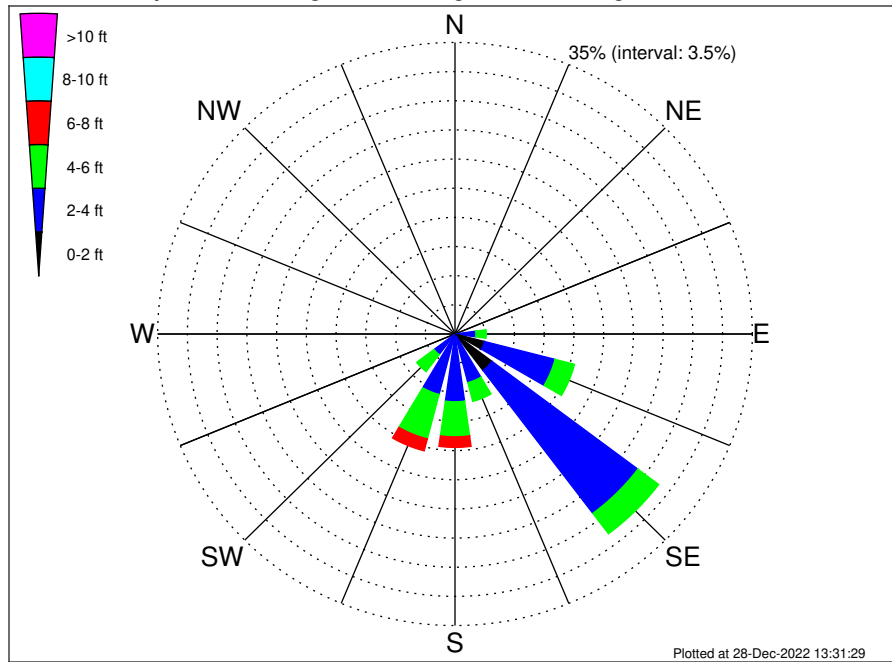
Swell: 82.42%



August Wind Speed PDF: 1979 - 2015



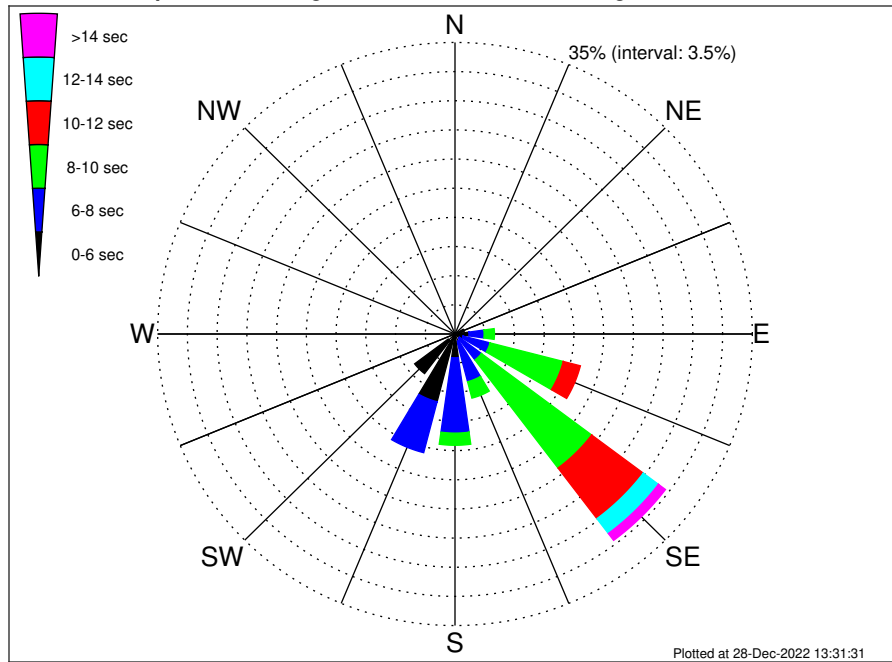
VNE 522 ECR Midpoint Climatological WaveHeight Rose for August: 1979 - 2015



Joint Frequency Distribution Table

	N	NNE	NE	ENE	E	ESE	SE	SSE	S	SSW	SW	WSW	W	WNW	NW	NNW	Total
calm	•	•	•	•	•	0.05	0.01	•	•	•	•	•	•	•	•	•	0.06
1 - 2 ft	0.02	0.01	0.02	0.03	0.23	3.54	5.45	0.35	0.31	0.64	0.10	0.05	0.01	•	0.01	0.03	10.83
2 - 4 ft	0.25	0.22	0.26	0.52	2.23	8.57	21.50	5.67	7.83	6.85	2.99	0.66	0.07	0.09	0.17	0.48	58.37
4 - 6 ft	0.03	0.03	0.15	0.51	1.22	2.37	3.06	2.34	4.21	5.51	2.55	0.14	0.07	0.08	0.02	0.03	22.34
6 - 8 ft	•	0.01	0.03	0.13	0.75	0.61	0.67	0.40	1.27	1.48	0.58	•	•	•	•	•	5.93
8 - 10 ft	•	•	0.01	0.06	0.36	0.20	0.22	0.15	0.41	0.29	0.08	•	•	•	•	•	1.77
10 - 12 ft	•	•	•	•	0.03	•	0.05	0.15	0.18	0.01	•	•	•	•	•	•	0.43
12 - 14 ft	•	•	•	•	•	•	0.05	0.07	0.05	•	•	•	•	•	•	•	0.16
14 - 16 ft	•	•	•	•	•	•	0.02	0.01	0.01	•	•	•	•	•	•	•	0.05
16 - 18 ft	•	•	•	•	•	•	•	•	0.02	•	•	•	•	•	•	•	0.02
> 18 ft	•	•	•	•	•	•	•	•	0.06	•	•	•	•	•	•	•	0.06
Total	0.31	0.28	0.48	1.24	4.82	15.34	31.02	9.14	14.35	14.79	6.31	0.84	0.15	0.17	0.21	0.55	100.00

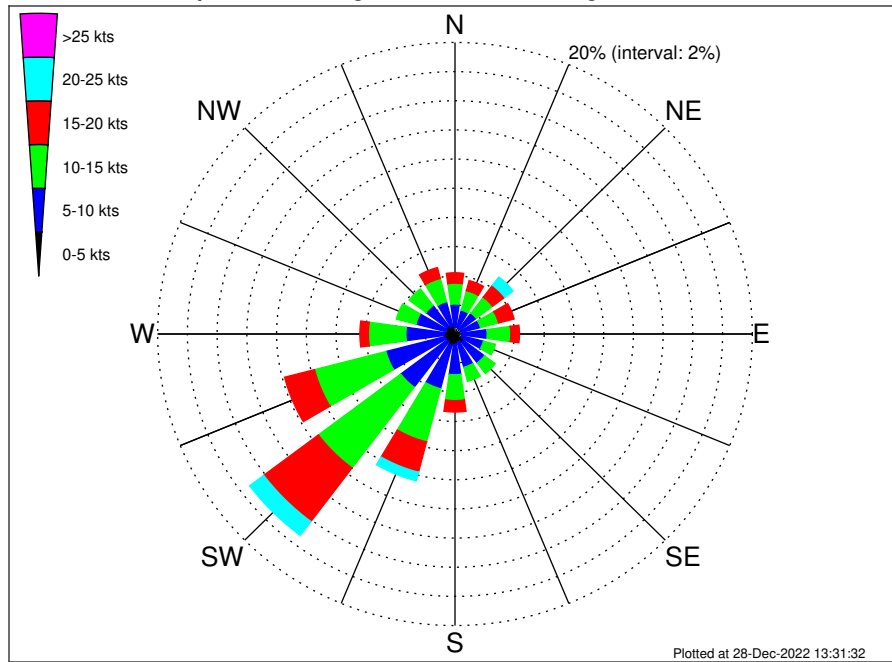
VNE 522 ECR Midpoint Climatological WavePeriod Rose for August: 1979 - 2015



Joint Frequency Distribution Table

	N	NNE	NE	ENE	E	ENE	SE	SSE	S	SSW	SW	WSW	W	WNW	NW	NNW	Total
calm
1 - 2 sec
2 - 4 sec	0.28	0.20	0.18	0.17	0.14	0.09	0.07	0.12	0.07	0.24	1.00	0.49	0.03	0.08	0.18	0.52	3.87
4 - 6 sec	0.03	0.08	0.29	0.94	1.51	0.89	0.60	0.77	2.78	8.16	4.95	0.35	0.12	0.09	0.02	0.03	21.61
6 - 8 sec	.	.	0.01	0.13	1.78	3.28	3.23	5.03	9.04	6.32	0.36	29.18
8 - 10 sec	1.22	8.91	16.25	2.04	1.46	0.06	29.93
10 - 12 sec	0.17	2.08	7.61	0.83	0.52	0.01	11.22
12 - 14 sec	0.09	2.23	0.21	0.35	2.88
14 - 16 sec	0.69	0.09	0.12	0.90
18 - 20 sec	0.35	0.06	0.01	0.41
22 - 24 sec
Total	0.31	0.28	0.48	1.24	4.82	15.34	31.02	9.14	14.35	14.79	6.31	0.84	0.15	0.17	0.21	0.55	100.00

VNE 522 ECR Midpoint Climatological Wind Rose for August: 1979 - 2015



Joint Frequency Distribution Table

	N	NNE	NE	ENE	E	ESE	SE	SSE	S	SSW	SW	WSW	W	WNW	NW	NNW	Total
calm	0.01	0.01	•	0.02	0.02	0.01	0.02	0.01	•	•	0.02	•	0.01	0.03	•	0.02	0.21
0 - 5 kts	0.45	0.47	0.44	0.43	0.47	0.45	0.70	0.56	0.69	0.82	0.66	0.69	0.72	0.60	0.69	0.55	9.39
5 - 10 kts	1.60	1.21	1.36	1.32	1.67	1.52	1.76	1.78	2.11	3.06	3.89	4.11	2.57	2.08	1.76	1.71	33.51
10 - 15 kts	1.43	1.38	1.37	1.25	1.59	0.83	0.90	0.99	1.77	3.76	6.94	4.96	2.52	1.36	1.42	1.65	34.11
15 - 20 kts	0.71	0.71	1.02	1.08	0.59	0.23	0.25	0.28	0.78	2.15	4.60	2.08	0.58	0.30	0.48	0.77	16.63
20 - 25 kts	0.13	0.30	0.70	0.46	0.13	0.03	0.09	0.08	0.15	0.61	1.19	0.37	0.03	0.09	0.15	0.20	4.71
25 - 30 kts	0.01	0.07	0.33	0.20	0.06	0.05	0.06	0.02	0.03	0.03	0.22	0.01	0.01	0.02	0.06	0.01	1.20
30 - 35 kts	0.01	•	0.08	•	•	0.01	•	•	•	•	•	•	0.02	•	•	•	0.13
35 - 40 kts	•	•	0.01	•	•	0.01	0.01	•	•	0.01	•	•	•	0.01	•	•	0.06
40 - 45 kts	•	0.01	0.01	•	•	0.01	0.01	•	•	•	•	0.01	•	•	•	•	0.06
45 - 50 kts	•	•	•	•	•	•	•	•	0.01	•	•	•	•	•	•	•	0.01
Total	4.35	4.17	5.33	4.76	4.52	3.15	3.81	3.73	5.55	10.45	17.51	12.23	6.47	4.50	4.56	4.91	100.00