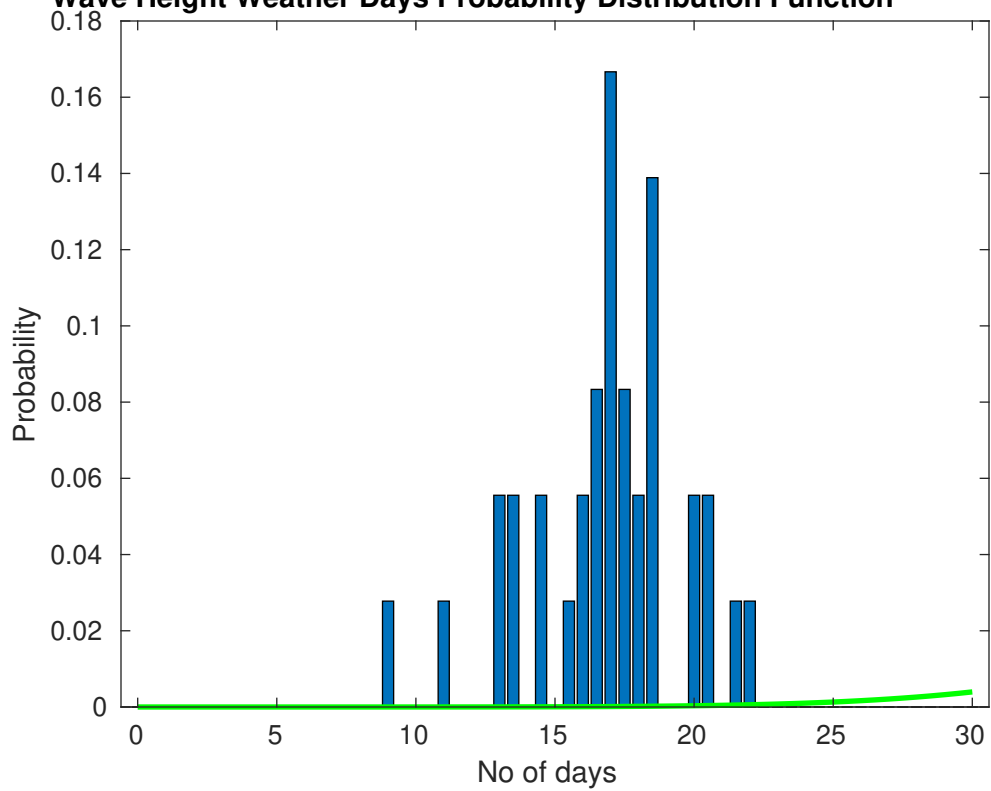
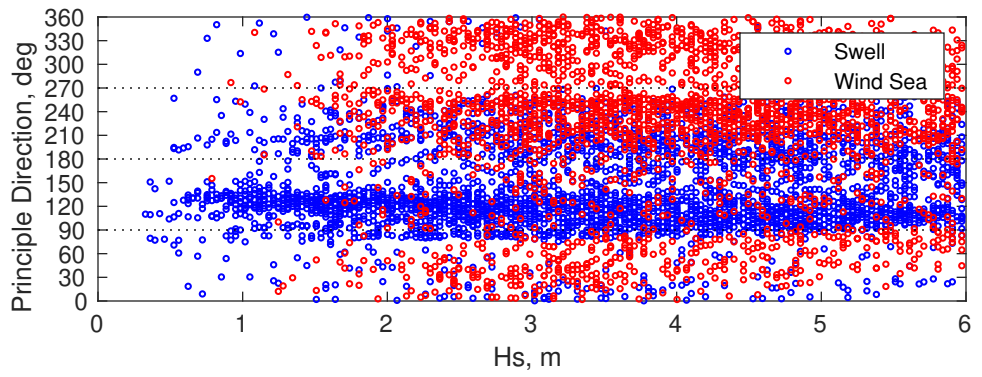
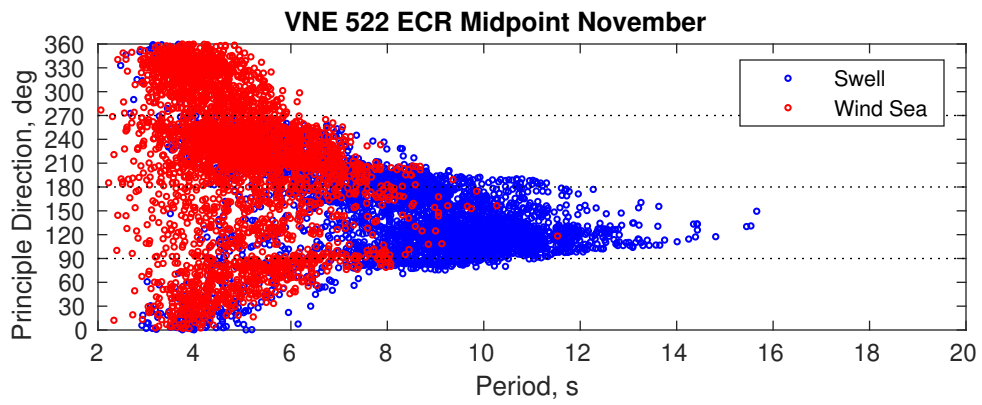


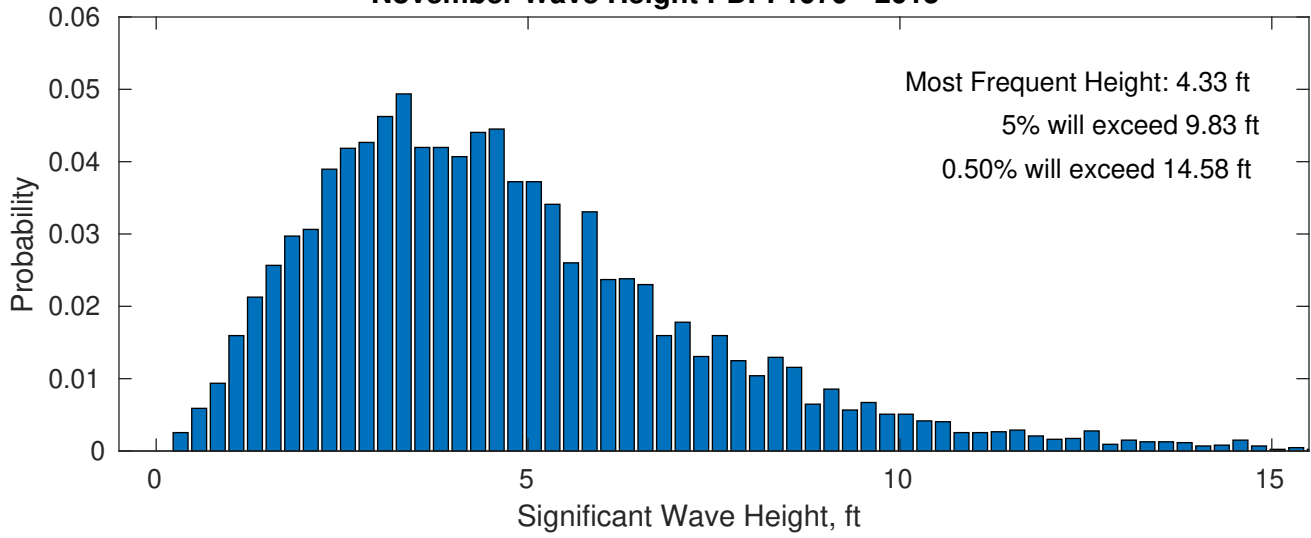


**Wave Height Weather Days Probability Distribution Function**

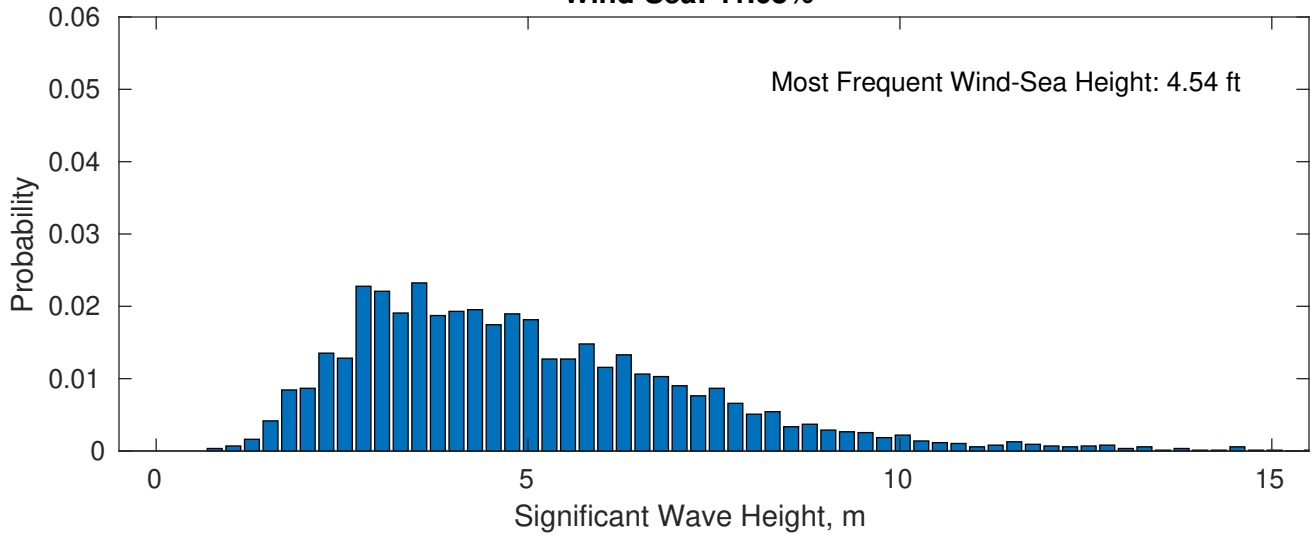




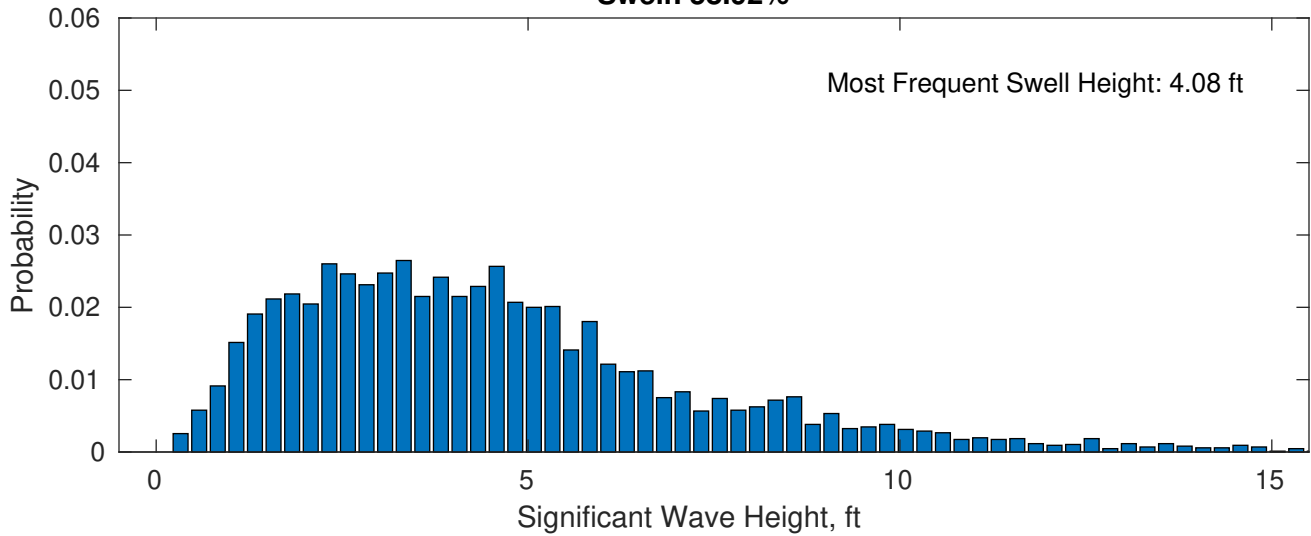
**November Wave Height PDF: 1979 - 2015**



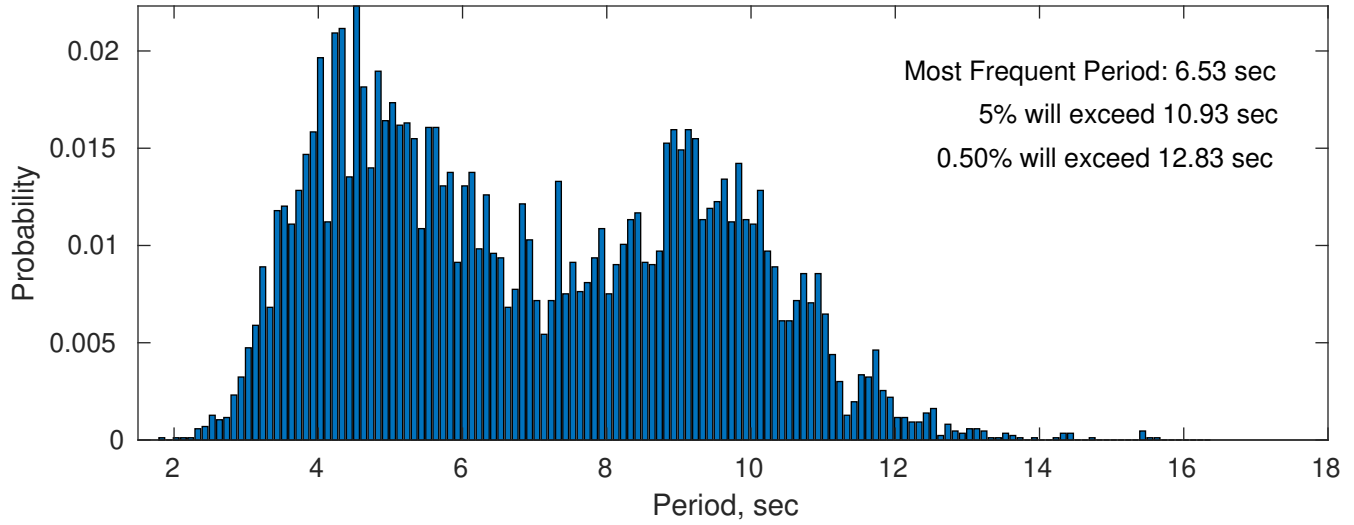
**Wind-Sea: 41.08%**



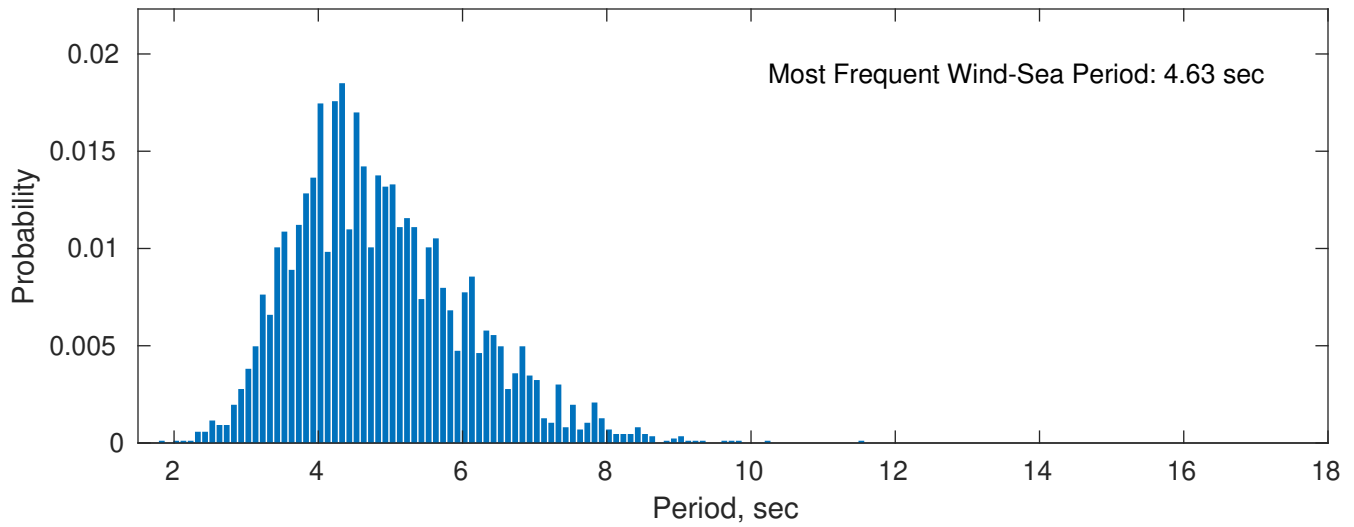
**Swell: 58.92%**



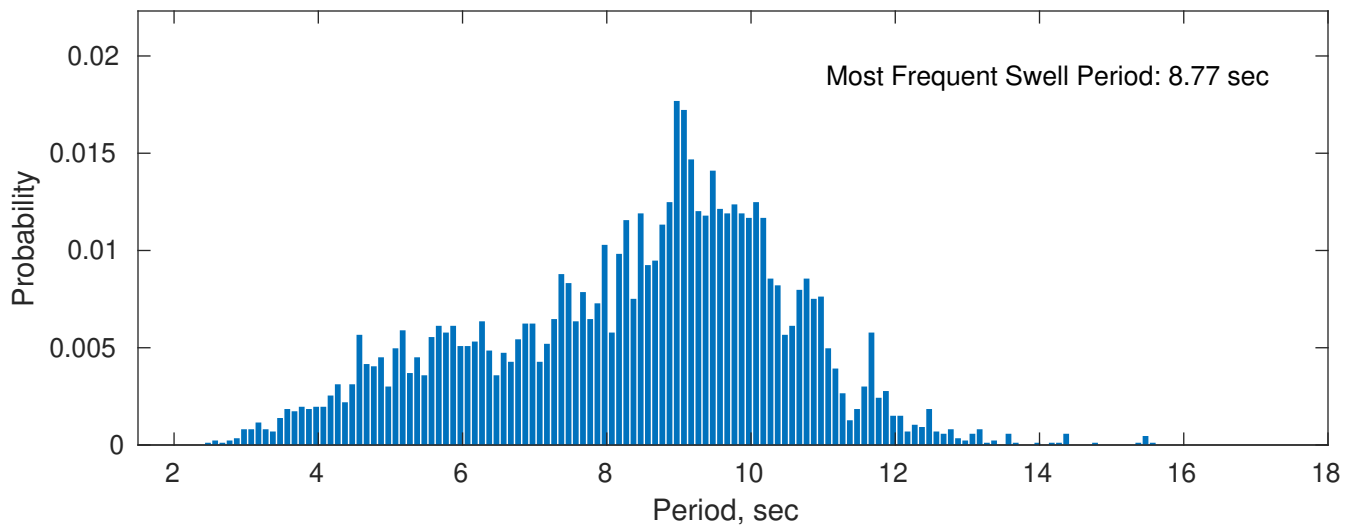
**November Peak Wave Period PDF: 1979 - 2015**



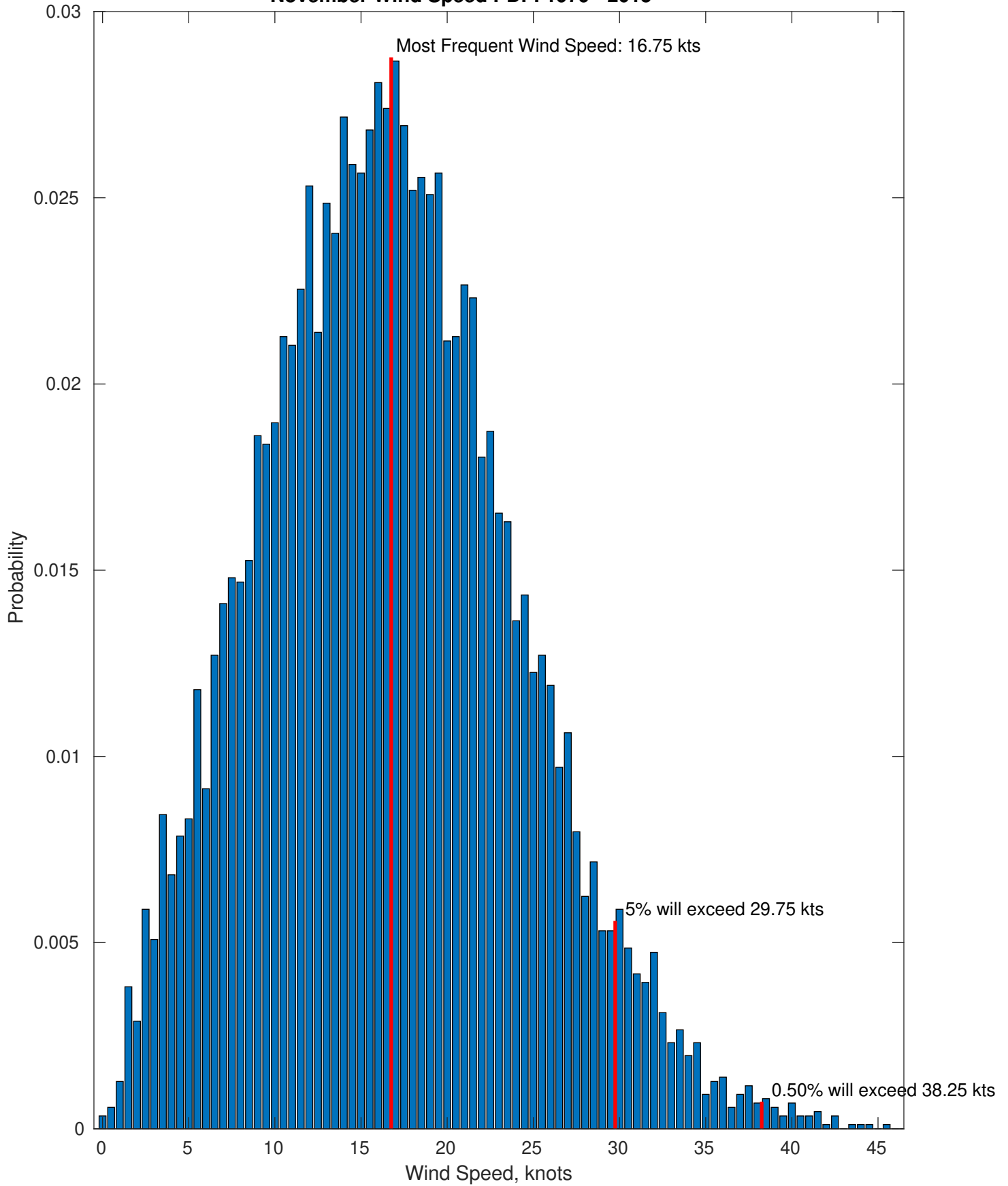
**Wind-Sea: 41.08%**



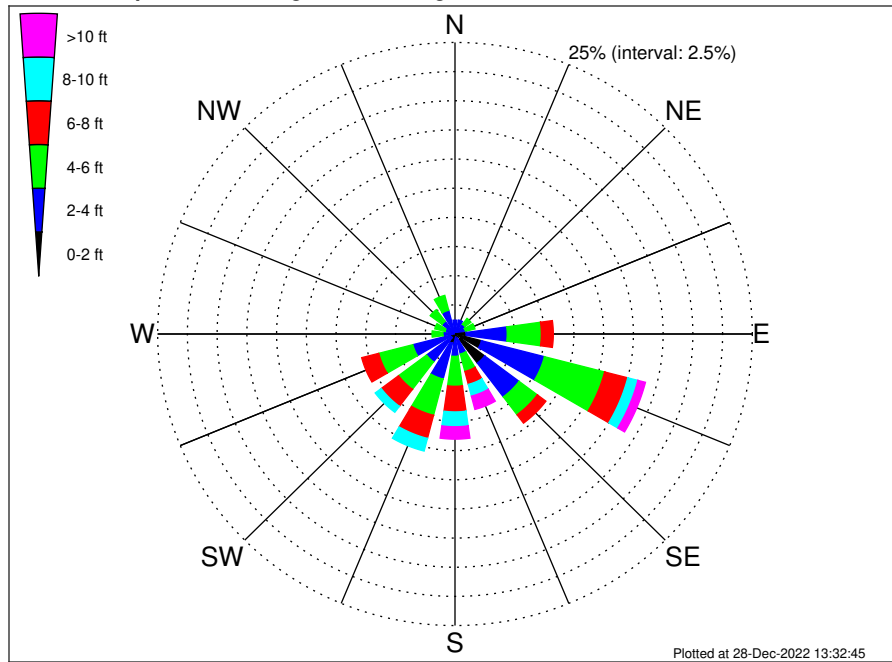
**Swell: 58.92%**



### November Wind Speed PDF: 1979 - 2015



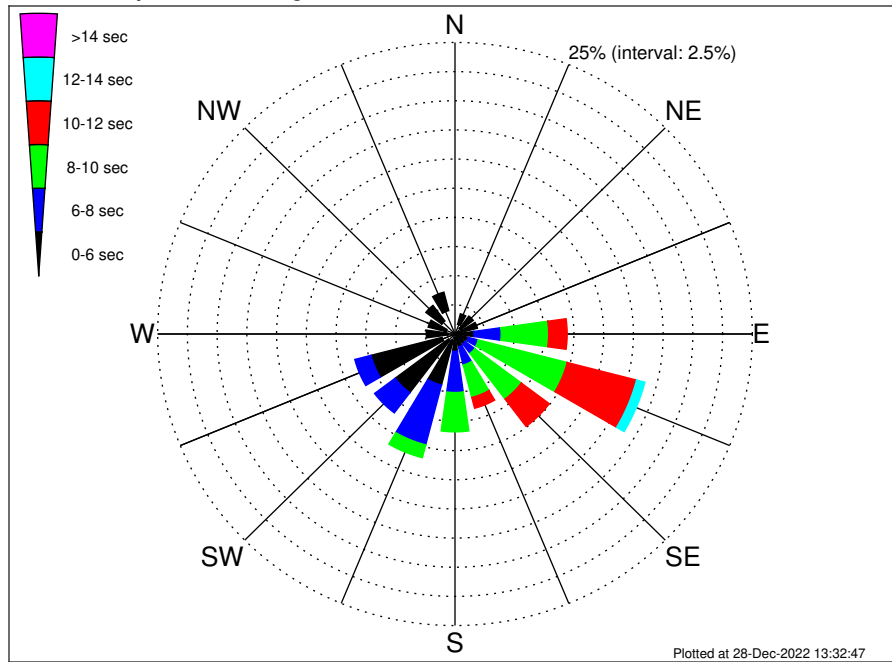
VNE 522 ECR Midpoint Climatological WaveHeight Rose for November: 1979 - 2015



Joint Frequency Distribution Table

	N	NNE	NE	ENE	E	ESE	SE	SSE	S	SSW	SW	WSW	W	WNW	NW	NNW	Total
calm	0.02	0.02	0.01	0.10	0.08	0.32	0.59	0.08	•	0.16	0.01	0.05	0.01	0.01	0.01	0.01	1.50
1 - 2 ft	0.10	0.15	0.16	0.12	0.86	1.98	2.53	0.31	0.28	0.65	0.37	0.37	0.20	0.07	0.10	0.16	8.40
2 - 4 ft	1.06	1.06	0.87	0.69	3.46	5.47	3.63	1.38	1.64	3.18	2.61	3.25	0.81	0.79	1.25	1.93	33.08
4 - 6 ft	0.37	0.47	0.64	0.82	2.87	5.23	1.92	1.55	2.57	3.21	2.95	2.96	0.91	0.89	1.25	1.32	29.92
6 - 8 ft	0.08	0.07	0.35	0.57	1.01	2.01	0.90	1.14	2.20	2.05	1.83	1.48	0.51	0.53	0.38	0.28	15.38
8 - 10 ft	•	0.01	0.03	0.18	0.60	0.88	0.49	1.04	1.27	1.12	0.64	0.47	0.05	0.07	0.08	0.01	6.95
10 - 12 ft	0.01	0.01	0.02	0.06	0.43	0.23	0.18	0.53	0.71	0.31	0.07	0.12	0.03	•	•	•	2.72
12 - 14 ft	•	•	•	•	0.08	0.21	0.08	0.36	0.28	0.20	0.03	0.01	•	•	•	•	1.25
14 - 16 ft	•	•	•	•	0.06	0.13	0.03	0.17	0.05	0.08	0.01	•	•	•	•	•	0.53
16 - 18 ft	•	•	•	•	0.01	0.08	0.02	0.07	0.01	•	•	•	•	•	•	•	0.20
> 18 ft	•	•	•	•	•	0.01	•	0.05	0.02	•	•	•	•	•	•	•	0.08
Total	1.65	1.80	2.08	2.54	9.45	16.54	10.38	6.68	9.02	10.96	8.52	8.71	2.52	2.36	3.08	3.71	100.00

VNE 522 ECR Midpoint Climatological WavePeriod Rose for November: 1979 - 2015

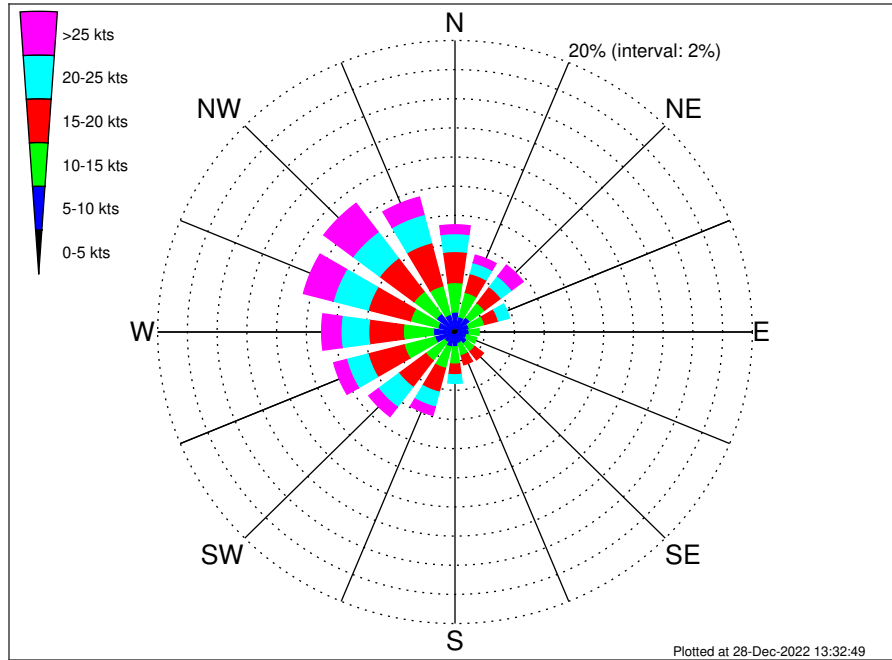


Joint Frequency Distribution Table

	N	NNE	NE	ENE	E	ESE	SE	SSE	S	SSW	SW	WSW	W	WNW	NW	NNW	Total
calm	•	•	•	•	•	•	•	•	•	•	•	•	•	•	•	•	•
1 - 2 sec	•	•	•	•	•	•	•	0.01	•	•	•	•	•	•	•	•	0.01
2 - 4 sec	1.16	0.86	0.60	0.27	0.16	0.18	0.20	0.27	0.31	0.58	0.69	1.12	0.60	0.77	1.40	2.07	11.24
4 - 6 sec	0.49	0.94	1.33	1.69	1.43	0.97	0.87	0.86	1.18	3.94	5.61	6.17	1.82	1.56	1.68	1.64	32.16
6 - 8 sec	0.01	0.01	0.15	0.45	2.29	0.87	1.02	1.61	3.53	5.29	2.17	1.41	0.10	0.02	•	•	18.94
8 - 10 sec	•	•	•	0.14	3.99	7.72	4.90	2.88	3.38	1.14	0.05	•	•	•	•	•	24.20
10 - 12 sec	•	•	•	•	1.56	6.02	2.95	0.96	0.61	•	•	•	•	•	•	•	12.10
12 - 14 sec	•	•	•	•	0.01	0.73	0.34	0.09	0.01	•	•	•	•	•	•	•	1.18
14 - 16 sec	•	•	•	•	•	0.05	0.12	0.01	•	•	•	•	•	•	•	•	0.17
18 - 20 sec	•	•	•	•	•	•	•	•	•	•	•	•	•	•	•	•	•
22 - 24 sec	•	•	•	•	•	•	•	•	•	•	•	•	•	•	•	•	•
Total	1.65	1.80	2.08	2.54	9.45	16.54	10.38	6.68	9.02	10.96	8.52	8.71	2.52	2.36	3.08	3.71	100.00



VNE 522 ECR Midpoint Climatological Wind Rose for November: 1979 - 2015



Joint Frequency Distribution Table

	N	NNE	NE	ENE	E	ESE	SE	SSE	S	SSW	SW	WSW	W	WNW	NW	NNW	Total
calm	•	0.02	•	•	0.02	•	0.01	•	0.02	0.01	•	•	•	•	•	•	0.09
0 - 5 kts	0.32	0.25	0.36	0.27	0.20	0.21	0.18	0.18	0.18	0.27	0.25	0.29	0.32	0.30	0.35	0.27	4.21
5 - 10 kts	1.05	0.81	0.89	0.72	0.74	0.60	0.79	0.62	0.81	0.79	0.62	1.11	1.13	0.90	1.21	0.98	13.78
10 - 15 kts	2.02	1.72	1.24	1.08	0.67	0.69	0.69	0.87	1.19	1.51	1.57	2.14	2.02	1.90	1.91	2.02	23.25
15 - 20 kts	2.13	1.33	1.39	0.96	0.50	0.45	0.72	0.65	0.73	1.69	2.28	2.51	2.32	2.94	2.88	3.05	26.51
20 - 25 kts	1.23	0.77	0.91	0.77	0.37	0.23	0.43	0.37	0.59	1.05	1.72	1.49	1.87	2.43	2.25	2.00	18.50
25 - 30 kts	0.40	0.23	0.44	0.22	0.13	0.17	0.30	0.27	0.27	0.42	0.67	0.71	0.90	1.20	1.58	1.02	8.92
30 - 35 kts	0.10	0.17	0.38	0.20	0.07	0.09	0.06	0.13	0.14	0.14	0.13	0.14	0.28	0.61	0.77	0.18	3.60
35 - 40 kts	0.07	0.09	0.10	0.06	0.01	0.01	0.01	0.05	0.02	0.02	•	0.05	0.06	0.21	0.07	0.03	0.87
40 - 45 kts	0.02	0.03	0.02	•	0.01	•	•	0.02	•	0.01	0.01	•	0.06	0.05	0.02	•	0.27
45 - 50 kts	•	•	0.01	•	•	•	•	•	•	•	•	•	•	•	•	•	0.01
Total	7.35	5.45	5.75	4.27	2.72	2.46	3.19	3.16	3.95	5.91	7.26	8.43	8.97	10.53	11.05	9.56	100.00