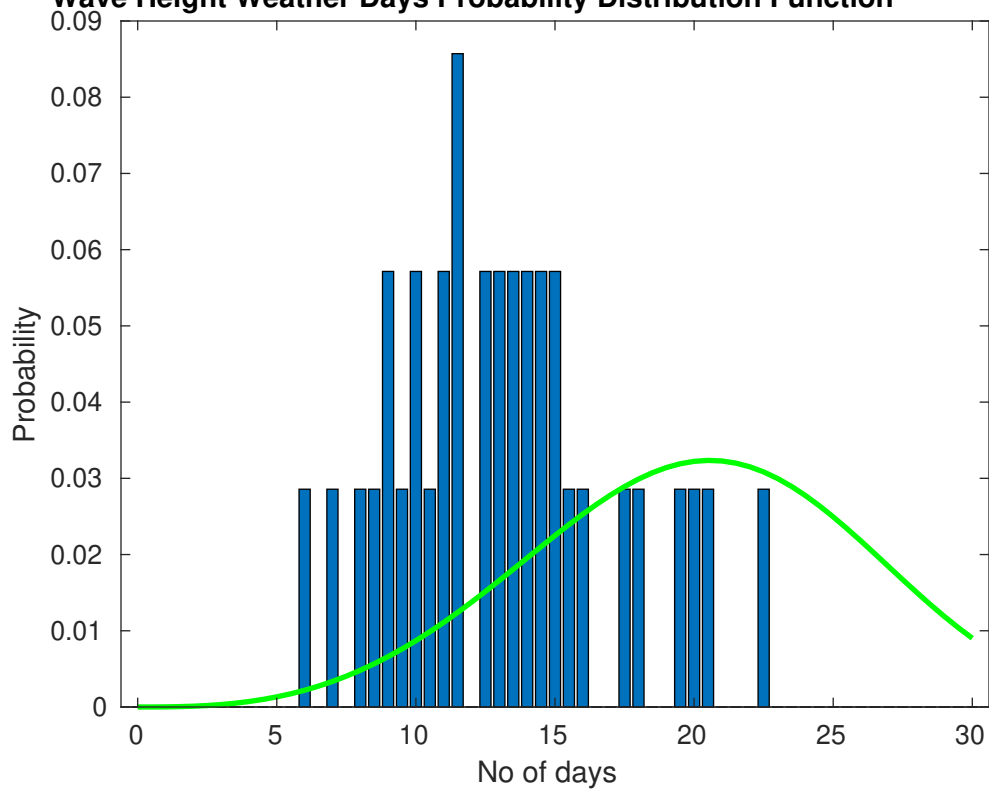
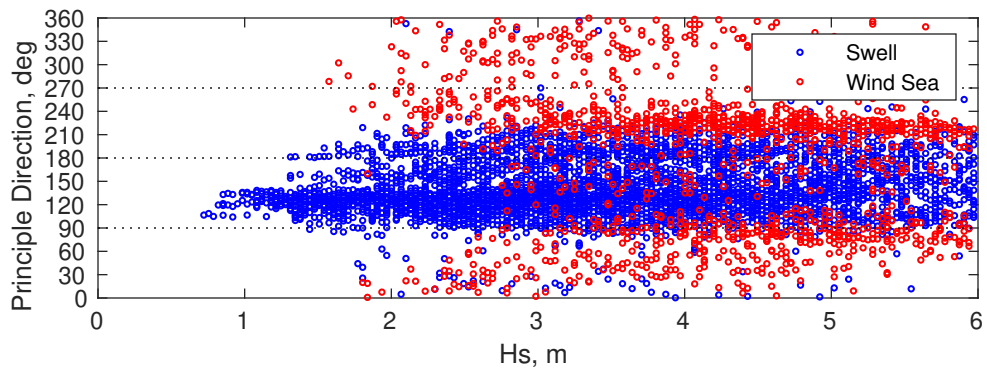
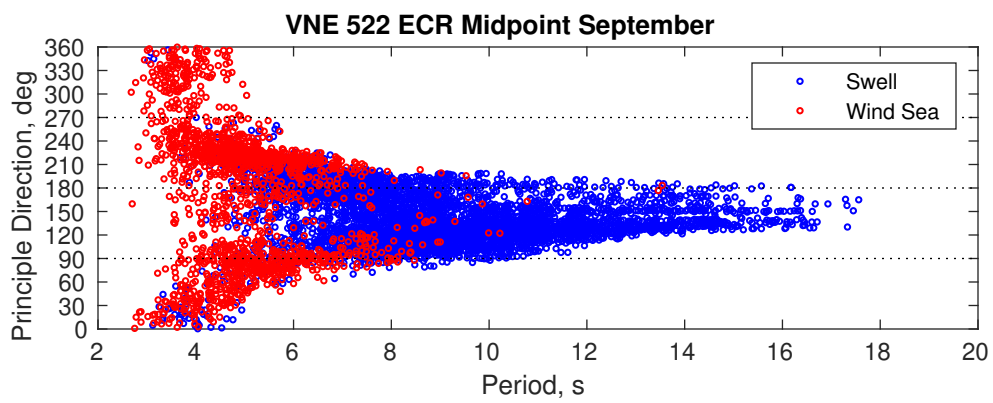
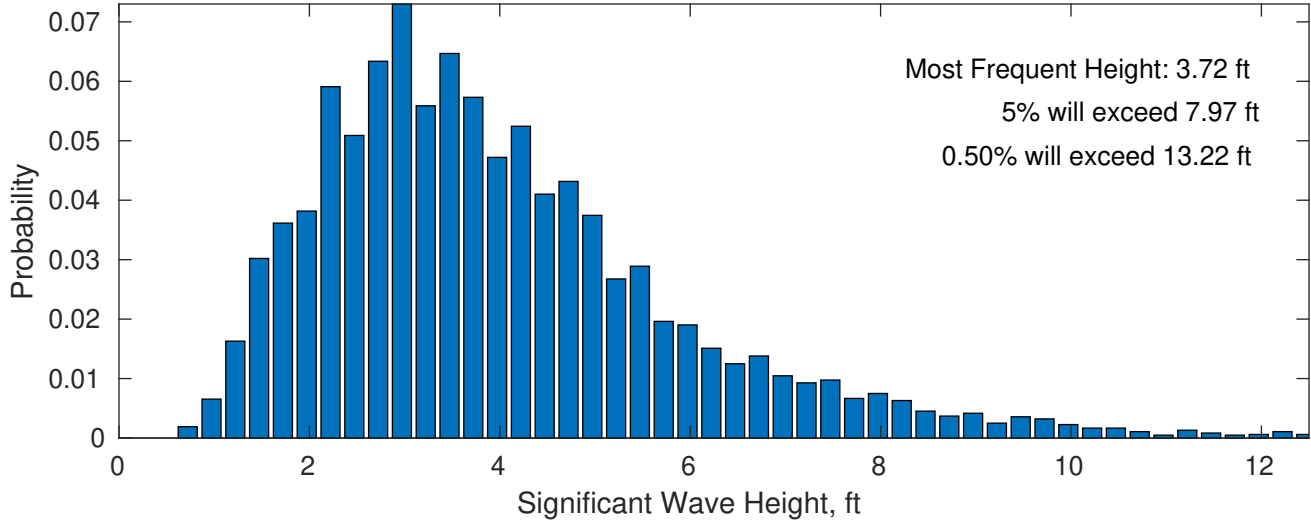


Wave Height Weather Days Probability Distribution Function

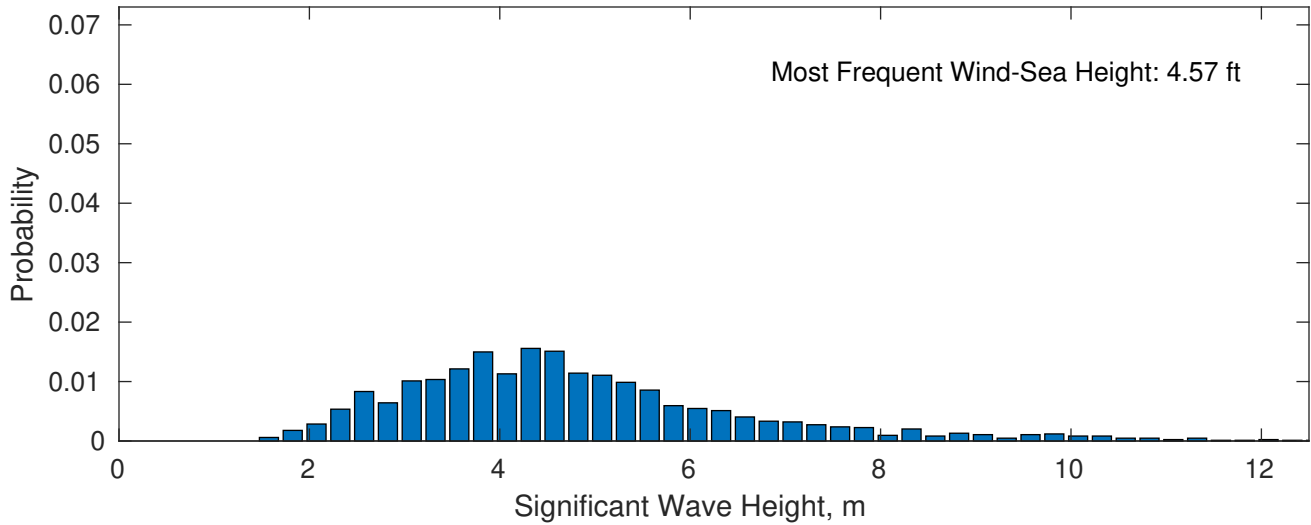




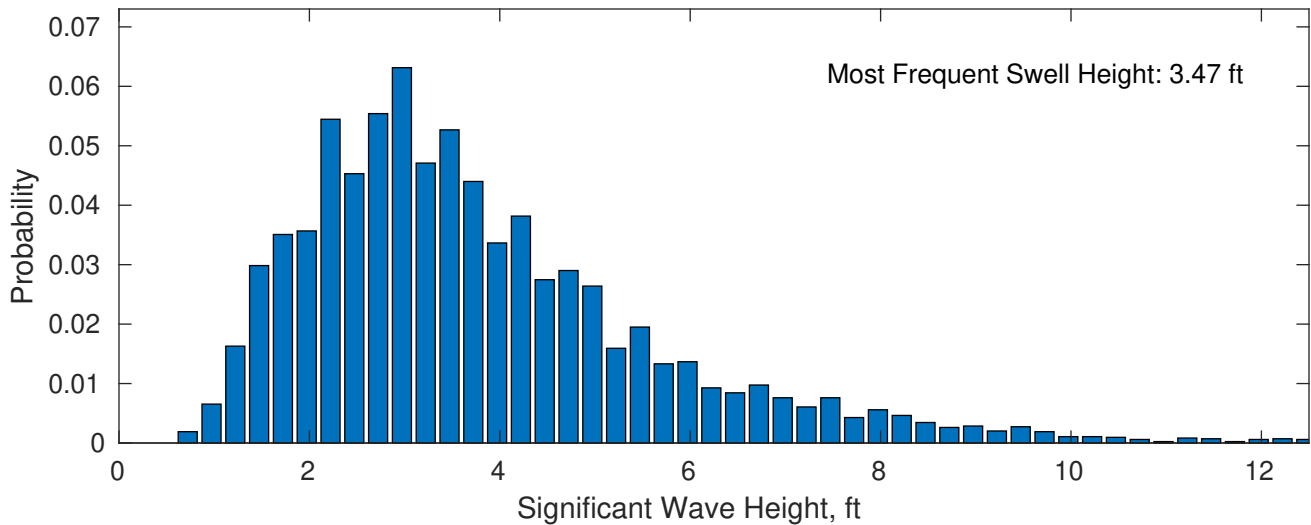
September Wave Height PDF: 1979 - 2015



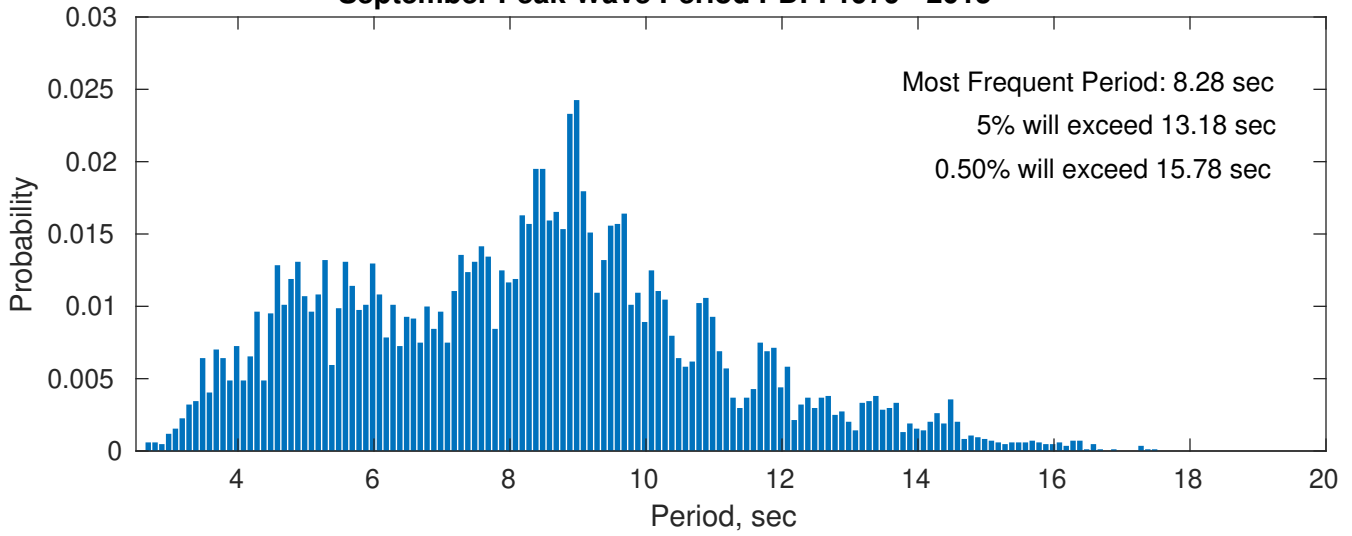
Wind-Sea: 20.51%



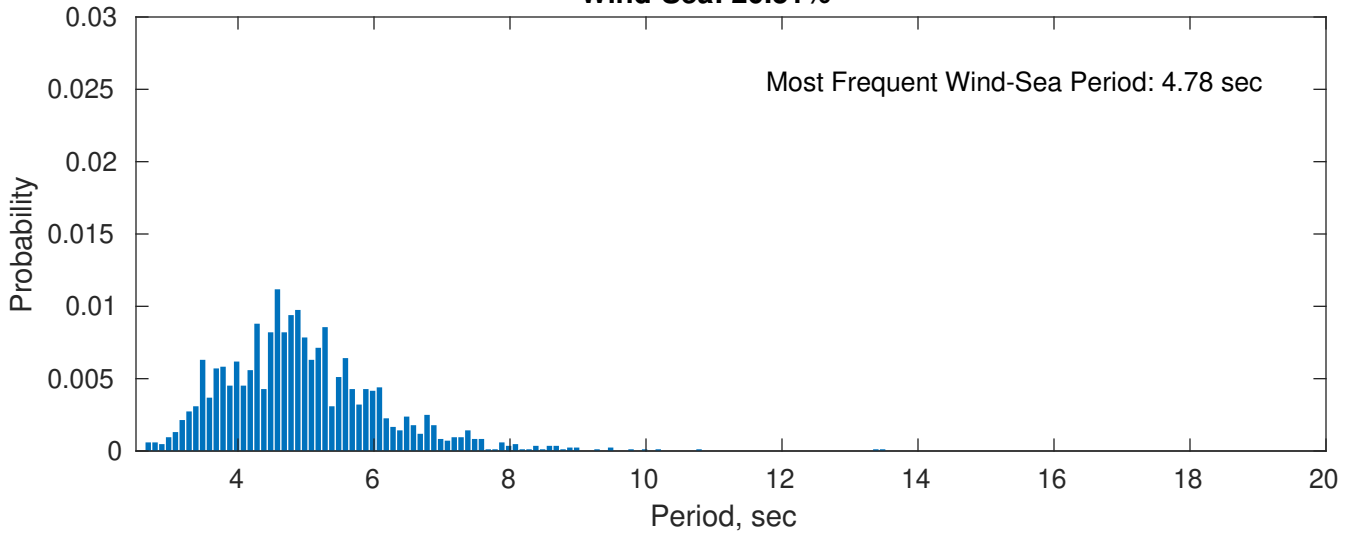
Swell: 79.49%



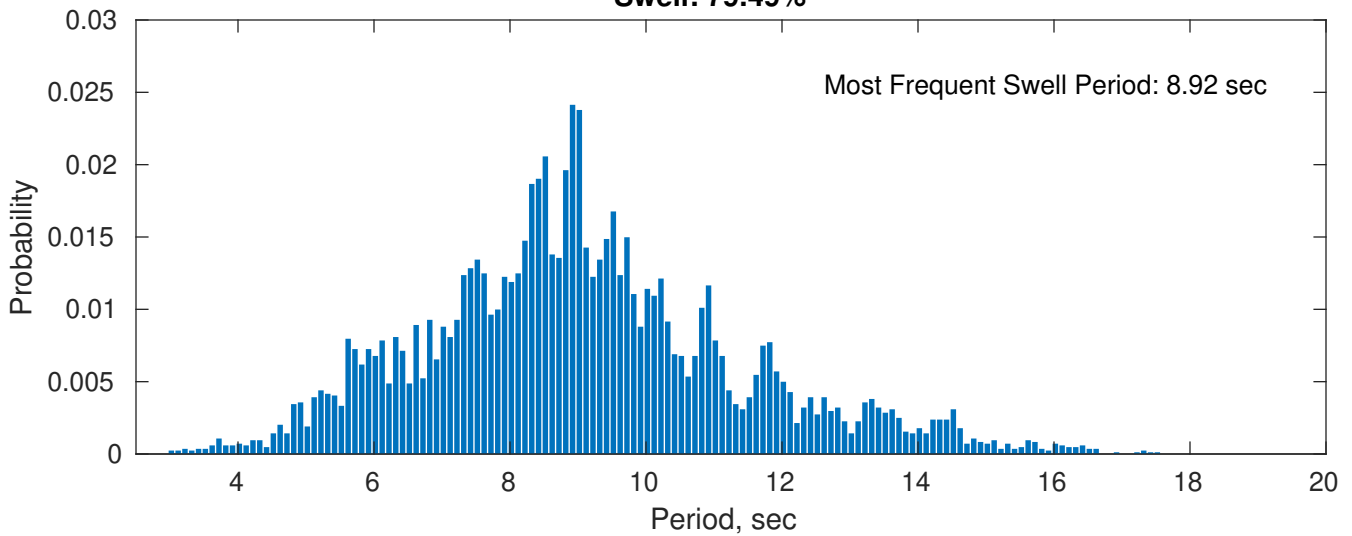
September Peak Wave Period PDF: 1979 - 2015



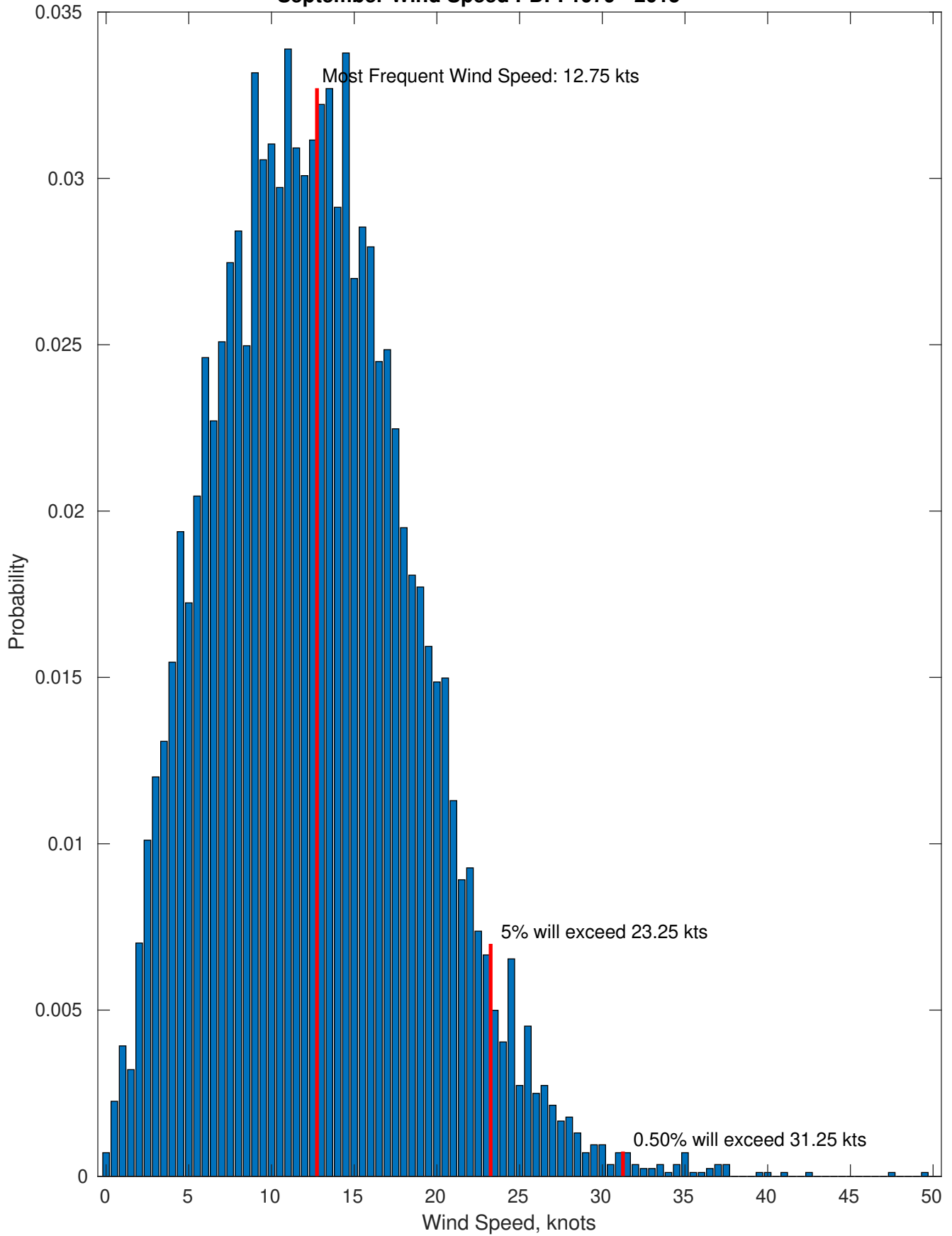
Wind-Sea: 20.51%



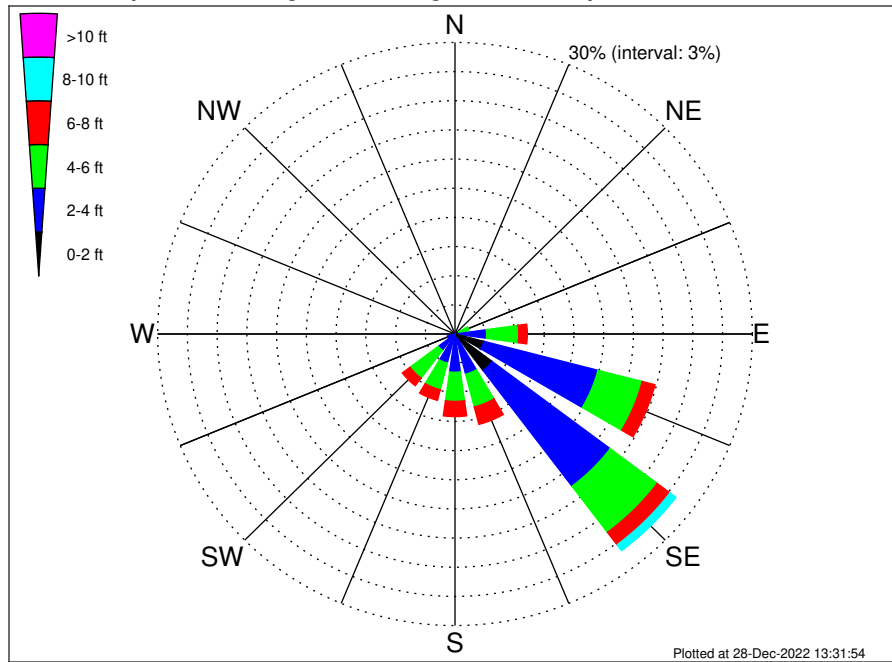
Swell: 79.49%



September Wind Speed PDF: 1979 - 2015



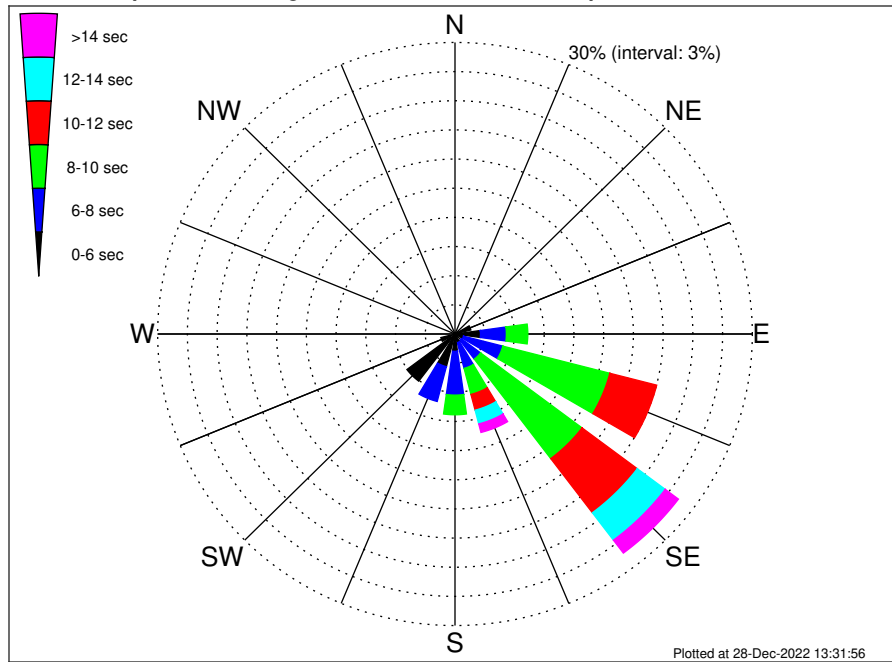
VNE 522 ECR Midpoint Climatological WaveHeight Rose for September: 1979 - 2015



Joint Frequency Distribution Table

	N	NNE	NE	ENE	E	ESE	SE	SSE	S	SSW	SW	WSW	W	WNW	NW	NNW	Total
calm	•	•	•	•	•	0.14	0.10	•	•	•	•	•	•	•	•	•	0.24
1 - 2 ft	0.02	0.04	0.04	0.01	0.31	2.87	4.60	0.45	0.27	0.17	0.02	0.02	0.02	0.02	•	•	8.87
2 - 4 ft	0.27	0.62	0.56	0.40	2.88	11.89	14.91	3.82	3.66	2.93	2.09	0.78	0.25	0.26	0.40	0.51	46.24
4 - 6 ft	0.17	0.23	0.43	1.05	3.25	4.61	5.95	3.48	3.00	2.83	3.57	0.63	0.13	0.05	0.11	0.19	29.66
6 - 8 ft	0.01	•	0.01	0.24	0.87	1.33	1.61	1.85	1.57	1.13	0.98	0.04	0.02	0.01	0.02	0.05	9.74
8 - 10 ft	•	•	0.01	0.10	0.33	0.52	0.76	0.55	0.65	0.48	0.10	•	•	•	•	•	3.50
10 - 12 ft	•	•	•	0.01	0.12	0.20	0.12	0.17	0.23	0.10	•	•	•	•	•	•	0.94
12 - 14 ft	•	•	•	•	0.02	0.05	0.13	0.12	0.12	0.01	•	•	•	•	•	•	0.45
14 - 16 ft	•	•	•	•	0.01	•	0.06	•	0.11	0.02	•	•	•	•	•	•	0.20
16 - 18 ft	•	•	•	•	•	•	•	•	0.07	0.01	•	•	•	•	•	•	0.08
> 18 ft	•	•	•	•	•	•	•	0.02	0.06	•	•	•	•	•	•	•	0.08
Total	0.48	0.88	1.05	1.81	7.79	21.62	28.23	10.46	9.74	7.67	6.75	1.47	0.43	0.34	0.54	0.75	100.00

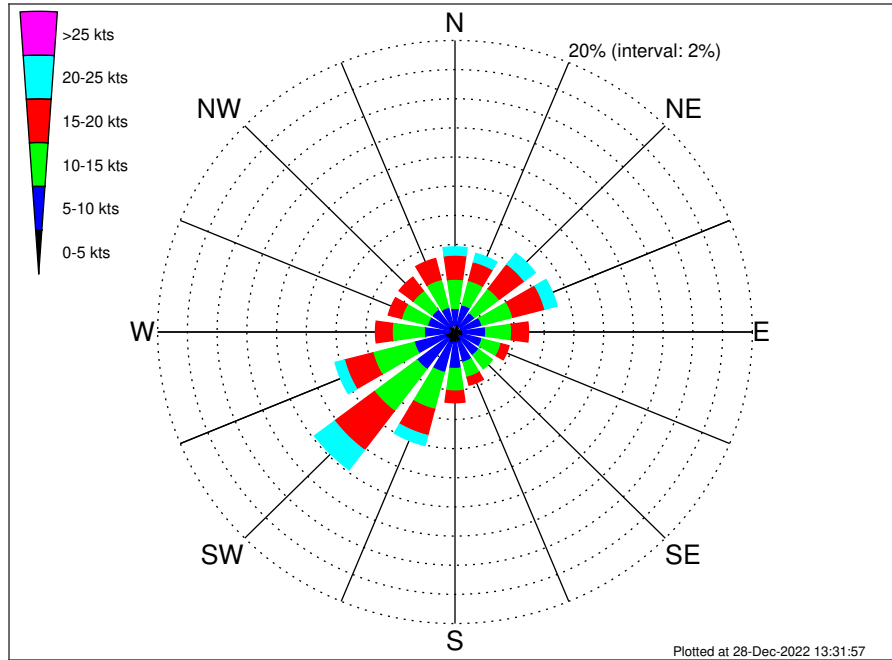
VNE 522 ECR Midpoint Climatological WavePeriod Rose for September: 1979 - 2015



Joint Frequency Distribution Table

	N	NNE	NE	E	ESE	SE	SSE	S	SSW	SW	WSW	W	WNW	NW	NNW	Total	
calm	
1 - 2 sec	
2 - 4 sec	0.30	0.56	0.33	0.14	0.07	0.06	0.06	0.06	0.10	0.20	0.50	0.52	0.24	0.25	0.43	0.52	4.34
4 - 6 sec	0.18	0.32	0.71	1.51	2.50	0.83	0.75	0.86	1.69	3.27	5.58	0.95	0.19	0.10	0.11	0.23	19.76
6 - 8 sec	.	.	.	0.15	2.62	4.09	2.43	2.73	4.51	3.70	0.68	20.90
8 - 10 sec	2.16	11.15	12.82	2.77	2.02	0.49	31.41
10 - 12 sec	0.44	4.89	6.98	1.68	0.73	0.01	14.72
12 - 14 sec	0.59	3.53	1.46	0.45	6.04
14 - 16 sec	1.44	0.73	0.23	2.39
18 - 20 sec	0.23	0.18	0.02	0.43
22 - 24 sec
Total	0.48	0.88	1.05	1.81	7.79	21.62	28.23	10.46	9.74	7.67	6.75	1.47	0.43	0.34	0.54	0.75	100.00

VNE 522 ECR Midpoint Climatological Wind Rose for September: 1979 - 2015



Joint Frequency Distribution Table

	N	NNE	NE	ENE	E	ESE	SE	SSE	S	SSW	SW	WSW	W	WNW	NW	NNW	Total
calm	0.01	0.04	0.01	0.02	0.01	0.04	•	0.02	0.04	•	•	0.05	0.02	0.02	0.01	•	0.30
0 - 5 kts	0.43	0.54	0.44	0.43	0.51	0.55	0.42	0.65	0.68	0.78	0.61	0.62	0.45	0.34	0.51	0.46	8.42
5 - 10 kts	1.19	1.36	1.19	1.41	1.55	1.30	1.57	1.46	1.80	2.08	2.58	2.16	1.59	1.55	1.40	1.28	25.47
10 - 15 kts	2.00	1.72	2.08	2.15	1.75	1.33	1.17	1.07	1.55	2.62	3.60	2.88	2.16	1.81	1.61	1.97	31.46
15 - 20 kts	1.65	1.32	2.10	2.22	1.13	0.55	0.44	0.56	0.80	1.85	3.35	1.97	1.12	0.92	1.18	1.49	22.65
20 - 25 kts	0.56	0.59	0.94	0.86	0.43	0.14	0.11	0.23	0.33	0.71	1.69	0.65	0.36	0.32	0.50	0.48	8.89
25 - 30 kts	0.07	0.19	0.19	0.27	0.23	0.06	0.01	0.05	0.13	0.10	0.24	0.05	0.11	0.08	0.15	0.18	2.10
30 - 35 kts	0.01	0.01	0.07	0.02	0.07	0.05	0.01	0.01	0.02	0.06	0.01	0.02	•	0.02	0.04	•	0.44
35 - 40 kts	0.01	0.01	0.06	•	0.01	•	•	0.02	0.02	•	0.01	0.01	•	0.02	0.01	•	0.20
40 - 45 kts	0.01	•	•	•	•	•	•	•	•	0.01	•	0.01	•	•	•	•	0.04
45 - 50 kts	•	•	•	•	•	•	0.01	•	•	0.01	•	•	•	•	•	•	0.02
Total	5.95	5.78	7.09	7.40	5.68	4.01	3.73	4.08	5.36	8.23	12.09	8.43	5.81	5.09	5.41	5.86	100.00