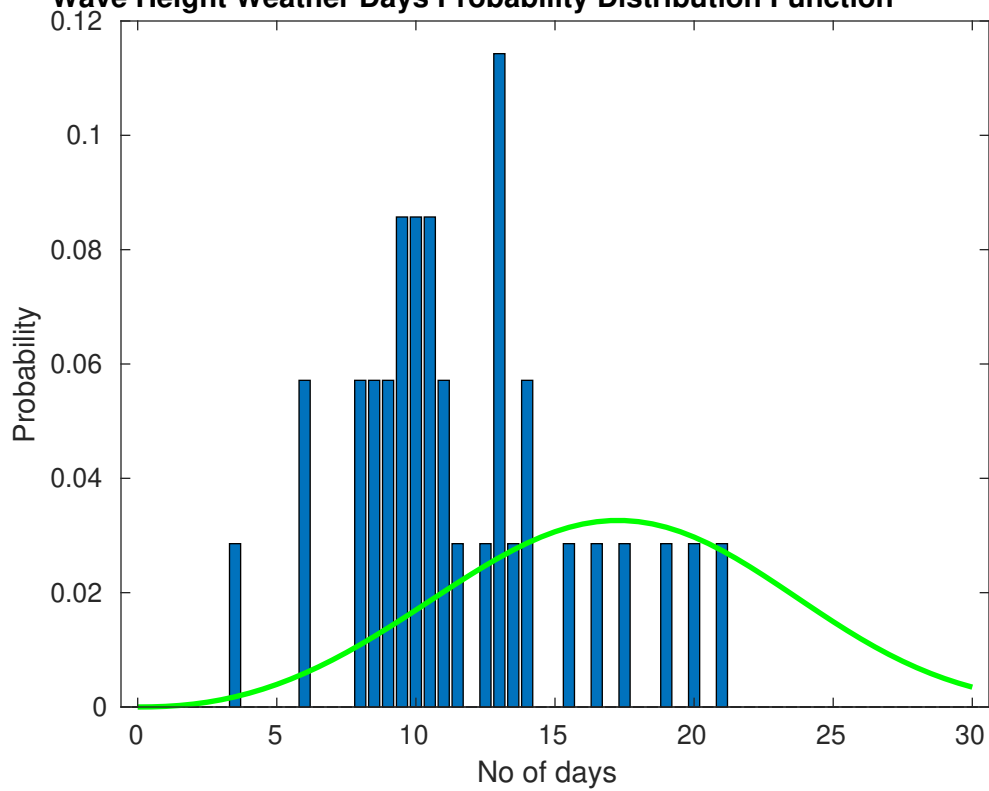
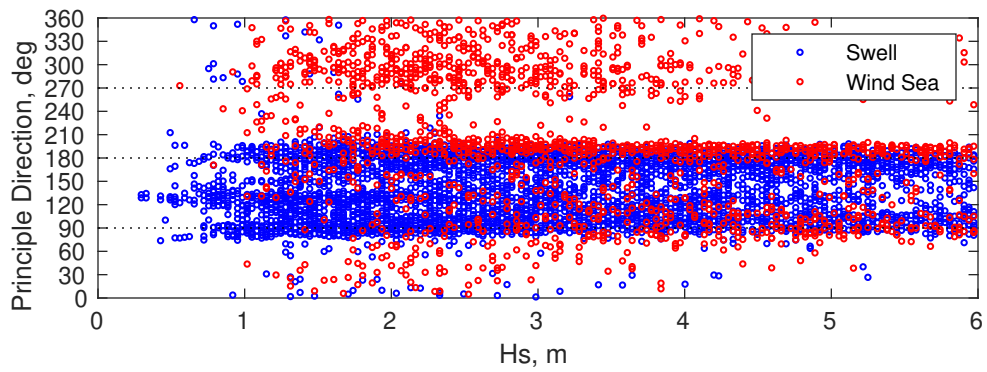
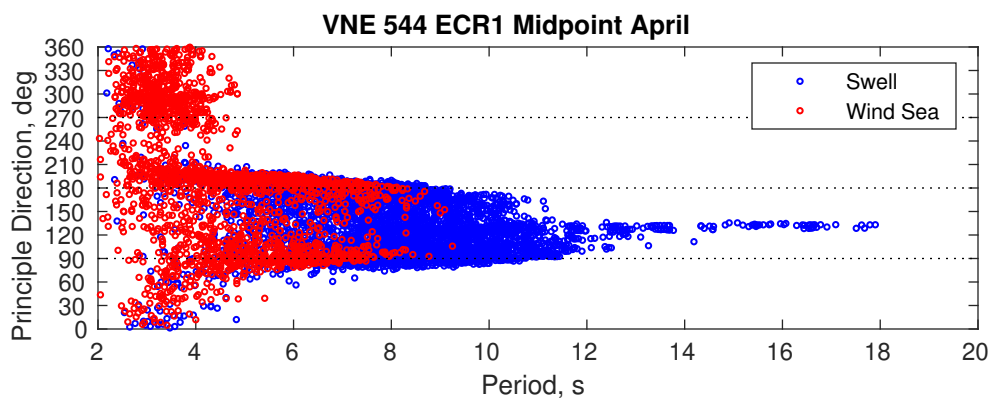
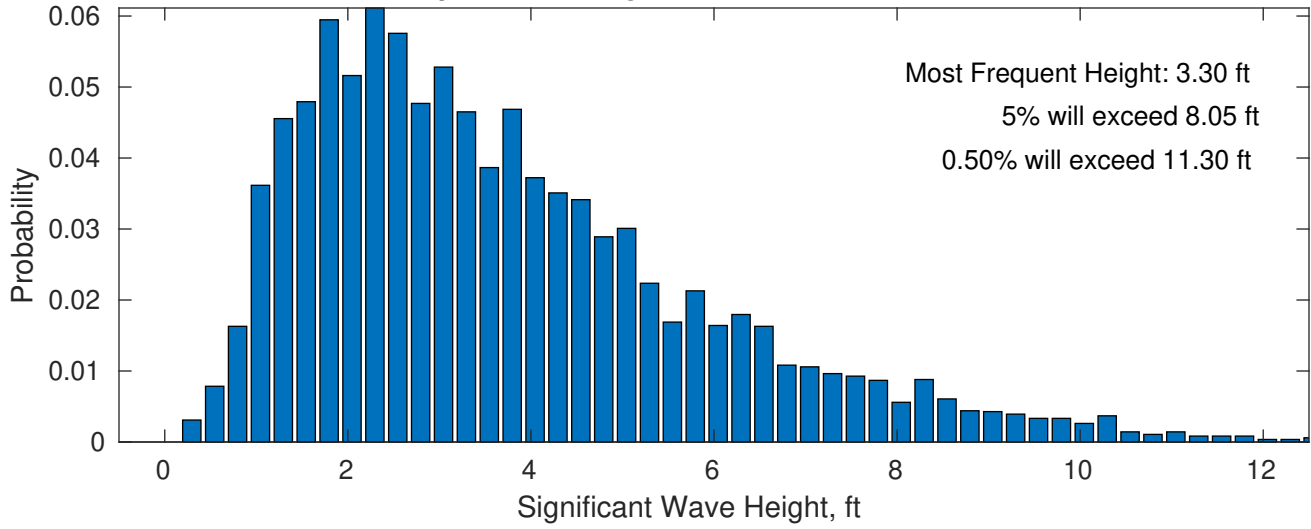


Wave Height Weather Days Probability Distribution Function

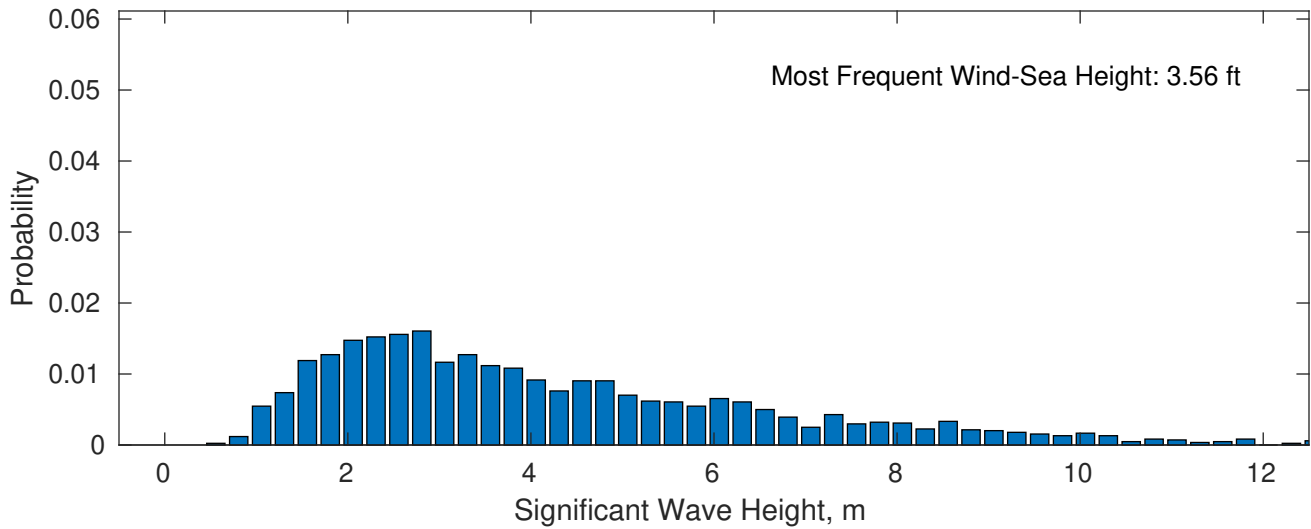




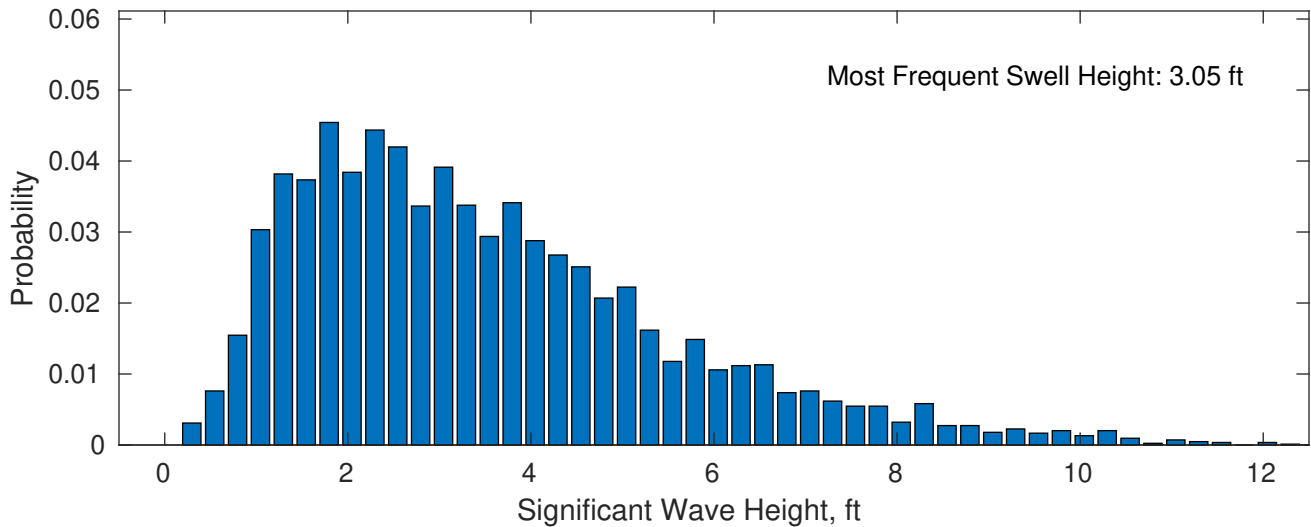
April Wave Height PDF: 1979 - 2015



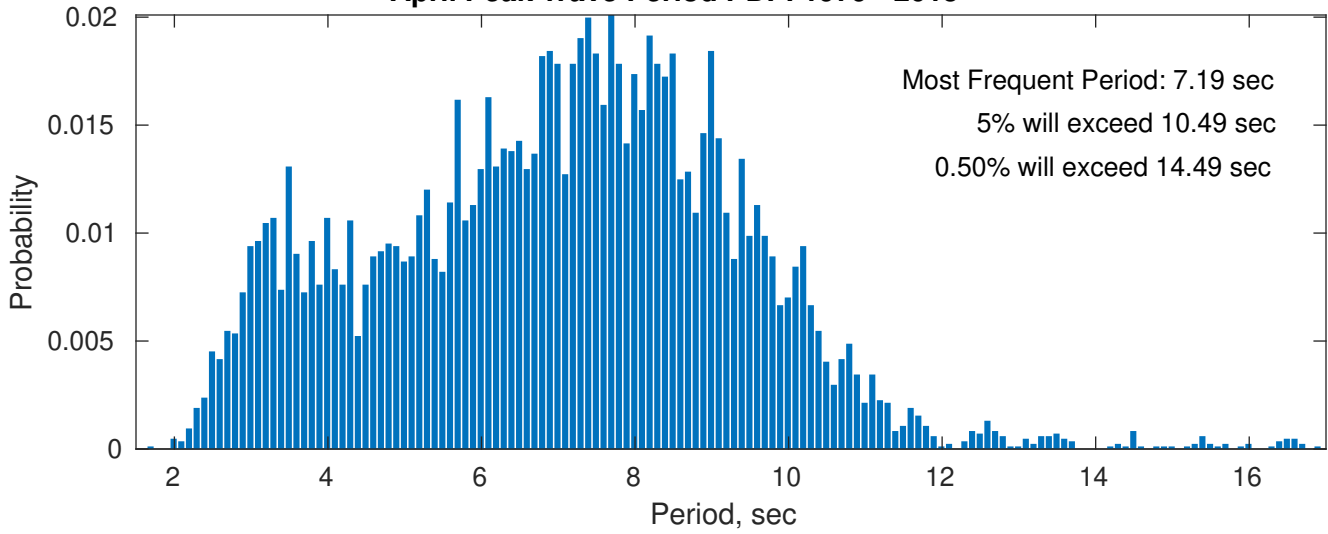
Wind-Sea: 26.67%



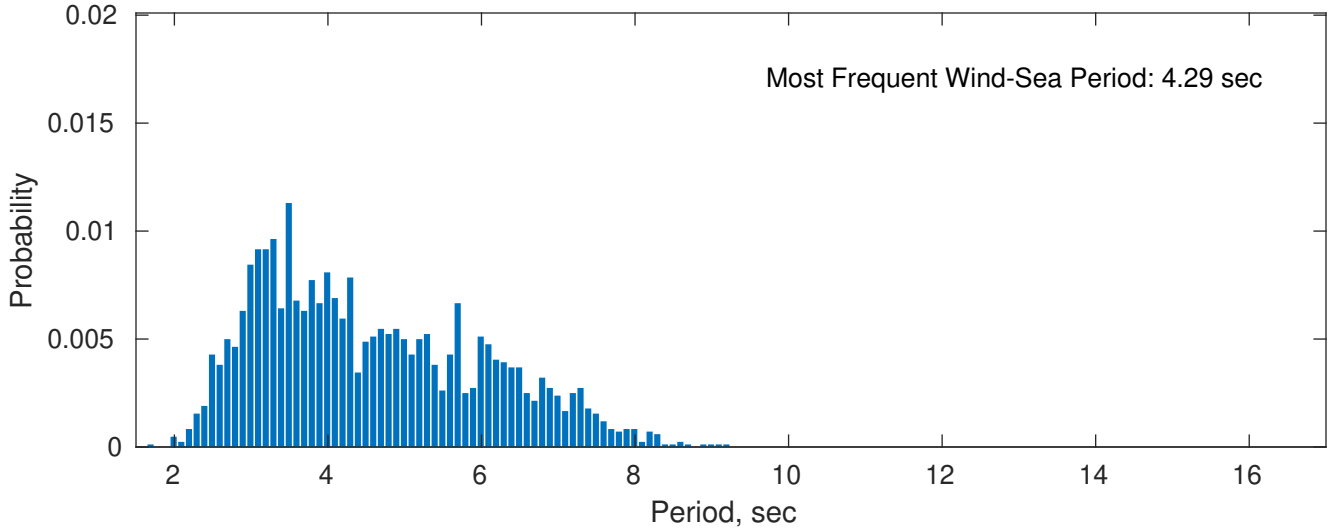
Swell: 73.33%



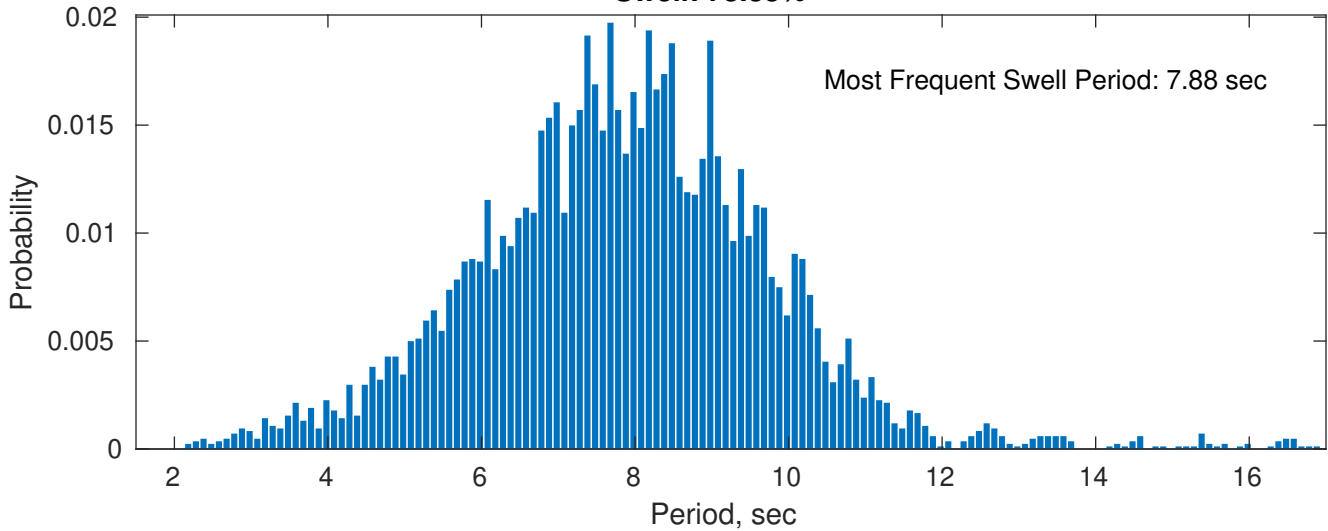
April Peak Wave Period PDF: 1979 - 2015



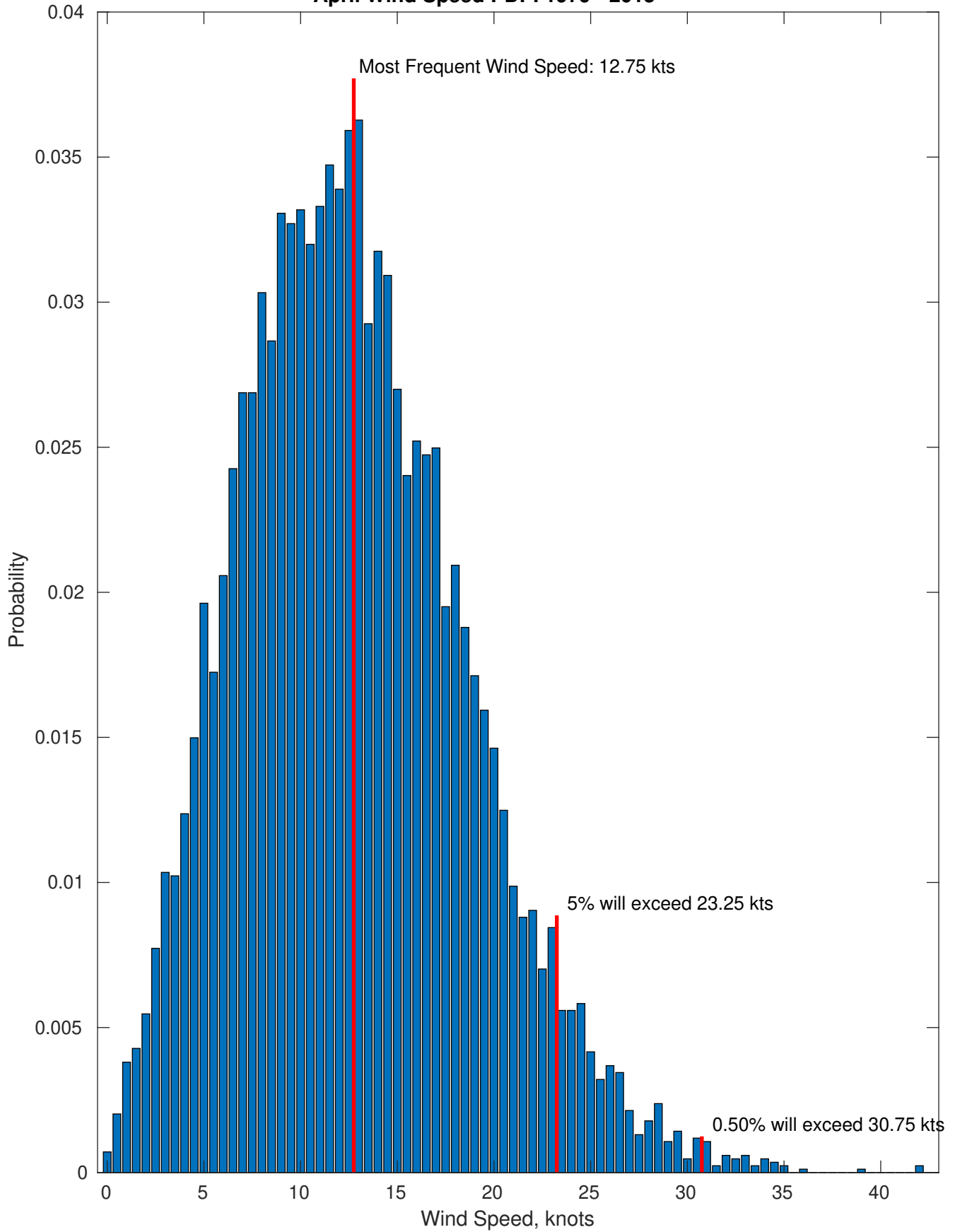
Wind-Sea: 26.67%



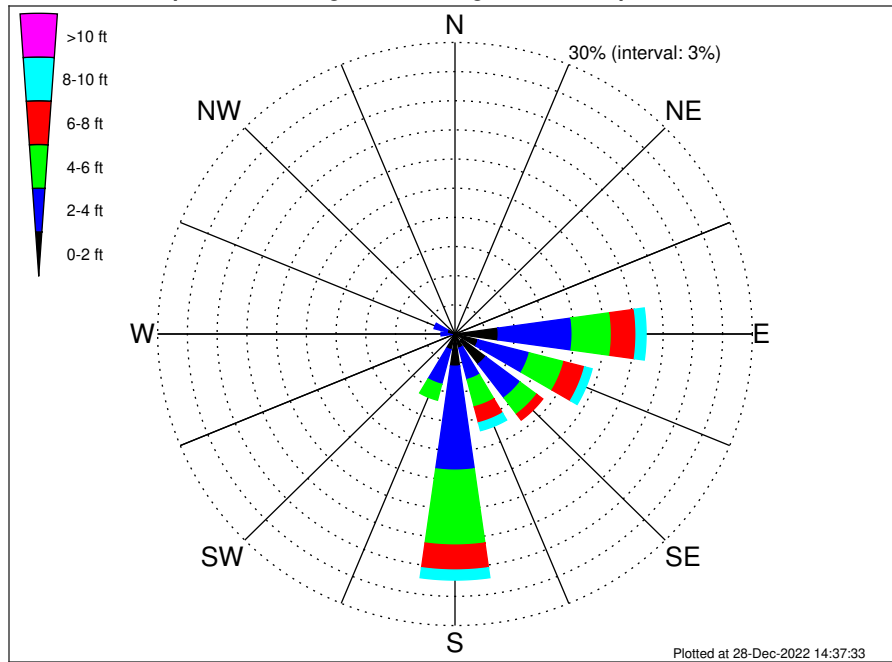
Swell: 73.33%



April Wind Speed PDF: 1979 - 2015



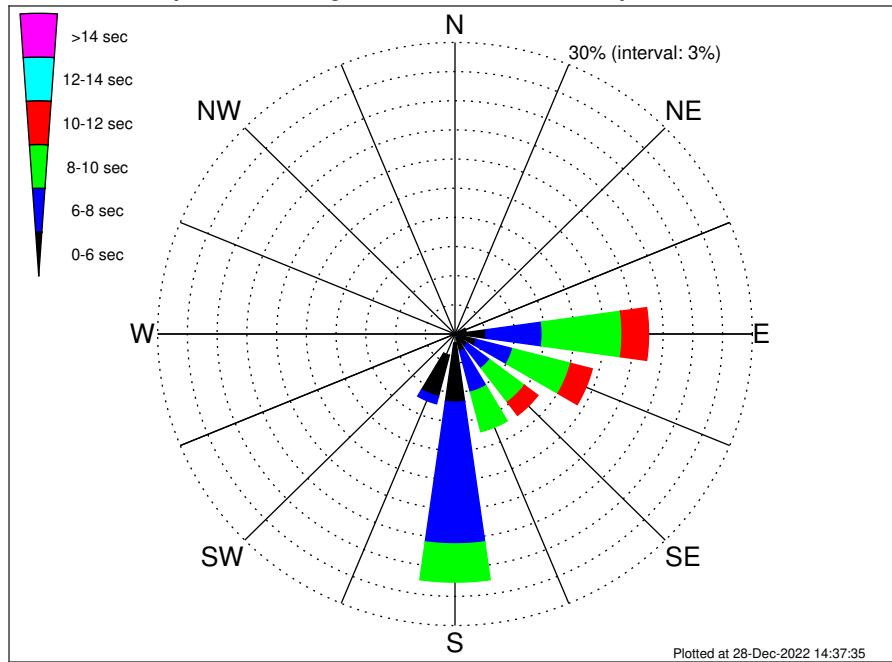
VNE 544 ECR1 Midpoint Climatological WaveHeight Rose for April: 1979 - 2015



Joint Frequency Distribution Table

	N	NNE	NE	ENE	E	ESE	SE	SSE	S	SSW	SW	WSW	W	WNW	NW	NNW	Total
calm	0.05	•	•	0.07	0.48	0.30	0.88	0.12	0.24	0.12	•	0.02	0.02	0.07	•	•	2.37
1 - 2 ft	0.21	0.19	0.12	0.23	3.89	2.12	3.00	1.38	3.08	1.55	0.26	0.15	0.30	0.76	0.34	0.26	17.84
2 - 4 ft	0.39	0.23	0.32	0.59	7.46	5.34	4.34	3.34	10.69	3.69	0.19	0.20	1.09	1.36	0.75	0.62	40.60
4 - 6 ft	0.06	0.05	0.06	0.36	3.96	3.60	2.11	2.90	7.71	1.69	0.01	0.06	0.19	0.23	0.05	0.12	23.14
6 - 8 ft	•	0.01	0.01	0.08	2.49	2.15	0.77	1.70	2.57	0.37	•	0.01	0.01	0.04	0.05	•	10.26
8 - 10 ft	•	•	0.01	0.02	1.01	0.78	0.46	0.83	1.03	0.01	•	•	•	•	•	•	4.17
10 - 12 ft	•	•	•	0.02	0.25	0.20	0.13	0.44	0.27	•	•	•	•	•	•	•	1.32
12 - 14 ft	•	•	•	•	•	0.01	0.06	0.13	0.04	•	•	•	•	•	•	•	0.24
14 - 16 ft	•	•	•	•	•	•	0.01	0.04	•	•	•	•	•	•	•	•	0.05
16 - 18 ft	•	•	•	•	•	•	•	•	•	•	•	•	•	•	•	•	•
> 18 ft	•	•	•	•	•	•	•	•	•	•	•	•	•	•	•	•	•
Total	0.71	0.48	0.52	1.38	19.53	14.51	11.76	10.88	25.63	7.42	0.46	0.45	1.62	2.45	1.19	1.00	100.00

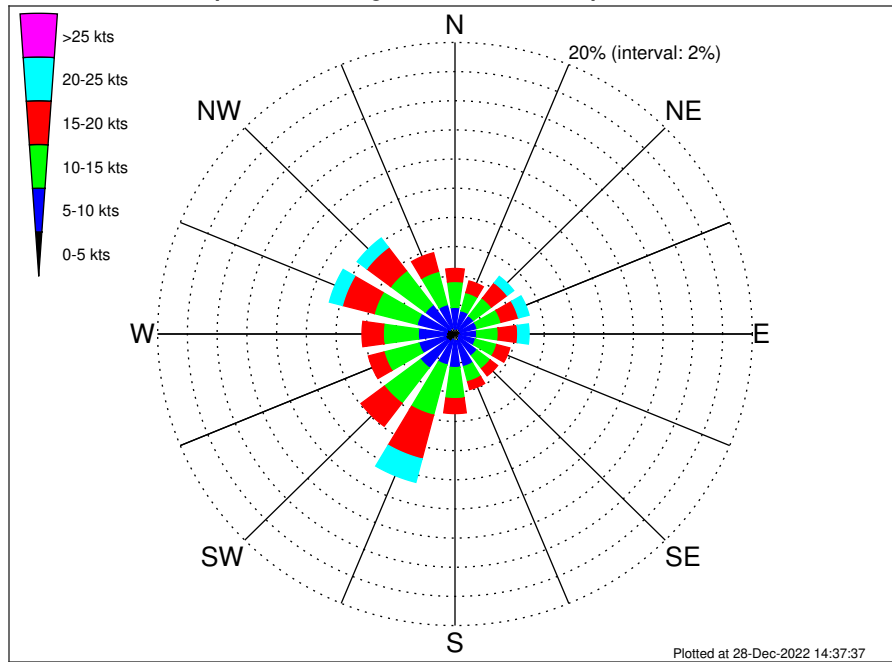
VNE 544 ECR1 Midpoint Climatological WavePeriod Rose for April: 1979 - 2015



Joint Frequency Distribution Table

	N	NNE	NE	E	ESE	SE	SSE	S	SSW	SW	WSW	W	WNW	NW	NNW	Total	
calm	•	•	•	•	•	•	•	•	•	•	•	•	•	•	•	•	
1 - 2 sec	•	•	•	•	•	•	•	0.01	•	•	•	•	•	•	•	0.01	
2 - 4 sec	0.68	0.42	0.37	0.39	0.43	0.25	0.48	0.40	0.90	2.26	0.42	0.34	1.37	2.18	1.11	0.93	12.92
4 - 6 sec	0.04	0.06	0.14	0.76	2.68	1.96	1.09	1.43	6.10	4.39	0.05	0.11	0.25	0.27	0.08	0.07	19.48
6 - 8 sec	•	•	0.01	0.17	5.70	3.81	2.82	4.34	14.58	0.77	•	•	•	•	•	•	32.20
8 - 10 sec	•	•	•	0.06	8.05	6.03	4.39	4.21	3.94	•	•	•	•	•	•	•	26.68
10 - 12 sec	•	•	•	•	2.68	2.26	1.70	0.50	0.10	•	•	•	•	•	•	•	7.23
12 - 14 sec	•	•	•	•	•	0.19	0.68	•	•	•	•	•	•	•	•	•	0.87
14 - 16 sec	•	•	•	•	•	0.01	0.33	•	•	•	•	•	•	•	•	•	0.34
18 - 20 sec	•	•	•	•	•	•	0.27	•	•	•	•	•	•	•	•	•	0.27
22 - 24 sec	•	•	•	•	•	•	•	•	•	•	•	•	•	•	•	•	•
Total	0.71	0.48	0.52	1.38	19.53	14.51	11.76	10.88	25.63	7.42	0.46	0.45	1.62	2.45	1.19	1.00	100.00

VNE 544 ECR1 Midpoint Climatological Wind Rose for April: 1979 - 2015



Joint Frequency Distribution Table

	N	NNE	NE	ENE	E	ESE	SE	SSE	S	SSW	SW	WSW	W	WNW	NW	NNW	Total
calm	0.02	0.04	0.01	0.04	•	0.01	0.02	0.01	0.01	•	•	•	0.02	0.01	0.01	0.06	0.27
0 - 5 kts	0.31	0.38	0.38	0.32	0.40	0.29	0.33	0.49	0.46	0.39	0.59	0.65	0.56	0.54	0.42	0.40	6.92
5 - 10 kts	1.50	1.24	1.17	1.18	1.06	1.13	1.49	1.81	1.83	1.80	2.31	1.86	1.89	2.09	2.07	1.62	26.02
10 - 15 kts	1.77	1.28	1.51	1.67	1.45	1.47	1.12	1.07	2.13	3.57	3.04	2.43	2.35	2.97	2.93	2.35	33.12
15 - 20 kts	0.89	0.82	1.33	1.21	1.31	0.90	0.63	0.56	1.02	3.10	1.97	1.08	1.43	2.21	2.02	1.32	21.82
20 - 25 kts	0.33	0.26	0.55	0.74	0.76	0.30	0.18	0.31	0.50	1.65	0.43	0.20	0.40	0.90	0.80	0.42	8.73
25 - 30 kts	0.08	0.10	0.25	0.29	0.23	0.18	0.14	0.11	0.14	0.36	0.02	•	0.07	0.21	0.11	0.18	2.46
30 - 35 kts	0.04	0.05	0.01	0.05	0.05	0.07	0.07	•	0.01	0.07	•	•	0.02	•	0.11	0.02	0.57
35 - 40 kts	0.02	•	•	•	0.01	•	•	0.01	•	•	•	•	•	•	•	•	0.05
40 - 45 kts	0.02	•	•	•	•	•	•	•	•	•	•	•	•	•	•	•	0.02
45 - 50 kts	•	•	•	•	•	•	•	•	•	•	•	•	•	•	•	•	•
Total	5.00	4.16	5.21	5.48	5.27	4.35	3.98	4.36	6.11	10.94	8.37	6.22	6.76	8.94	8.46	6.37	100.00