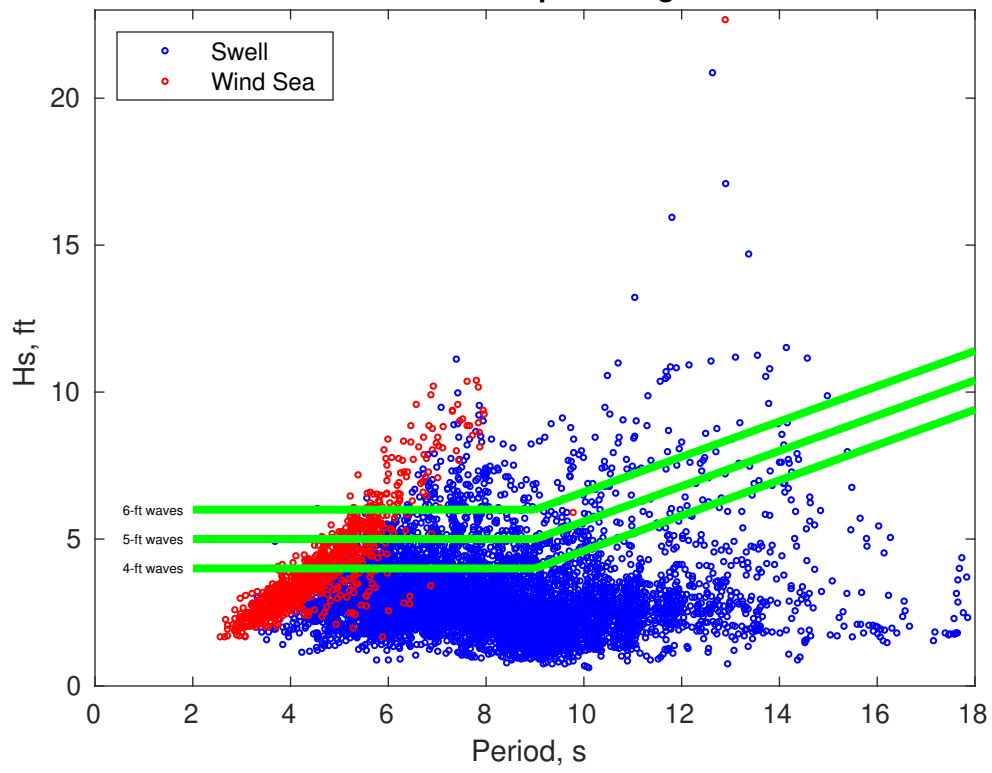
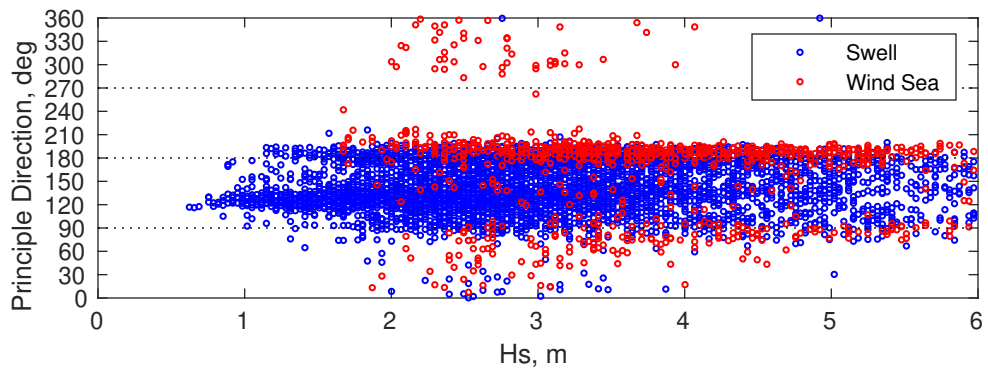
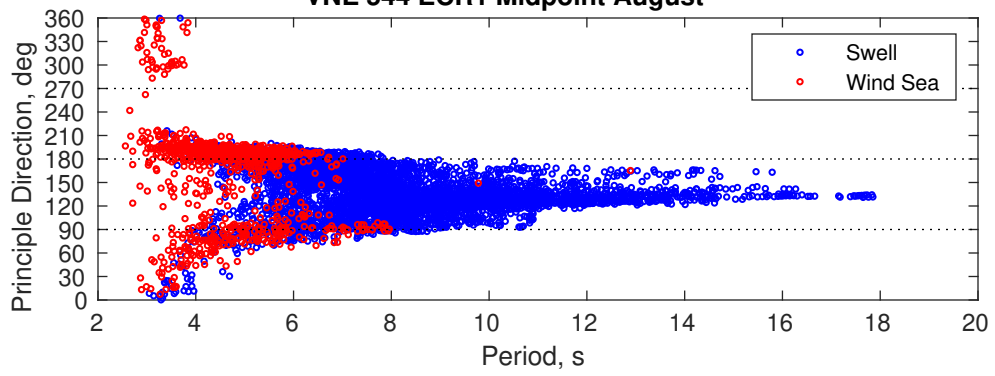


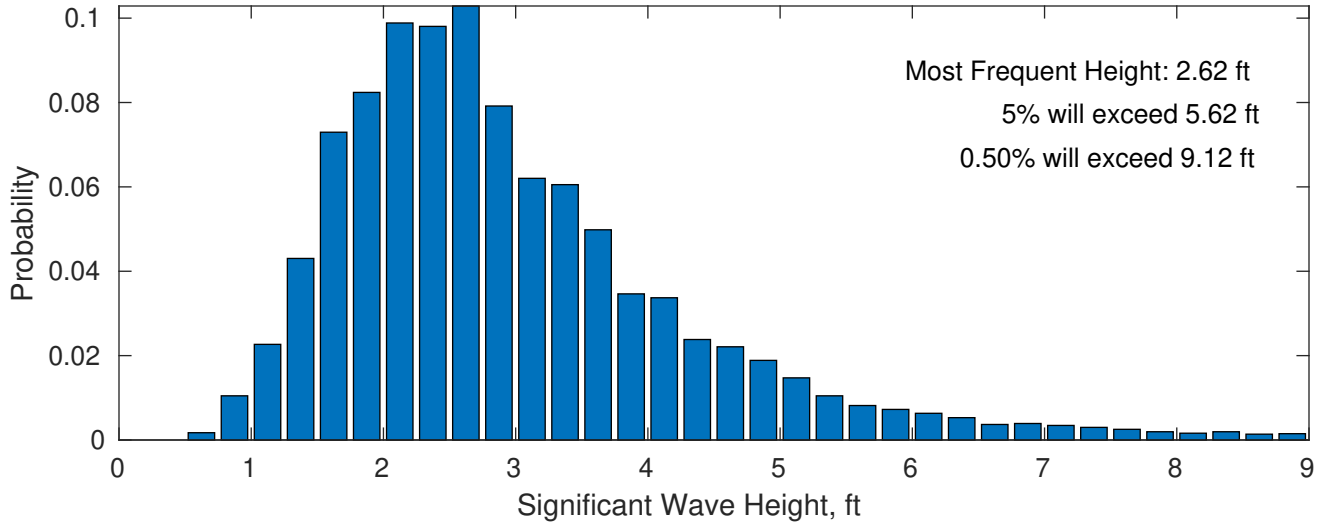
VNE 544 ECR1 Midpoint August



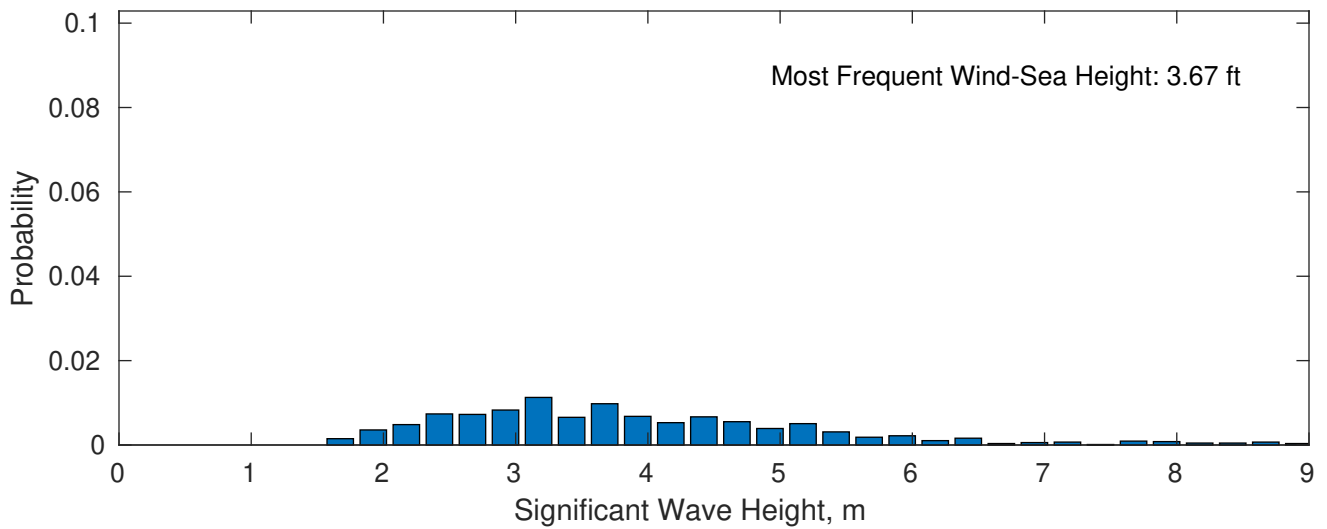
VNE 544 ECR1 Midpoint August



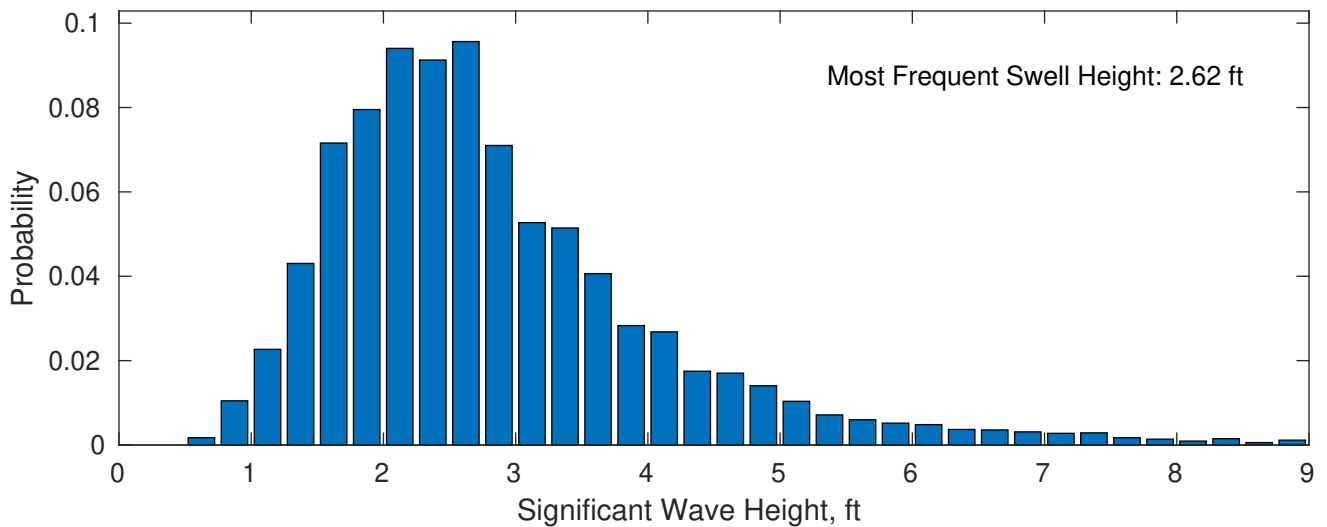
August Wave Height PDF: 1979 - 2015



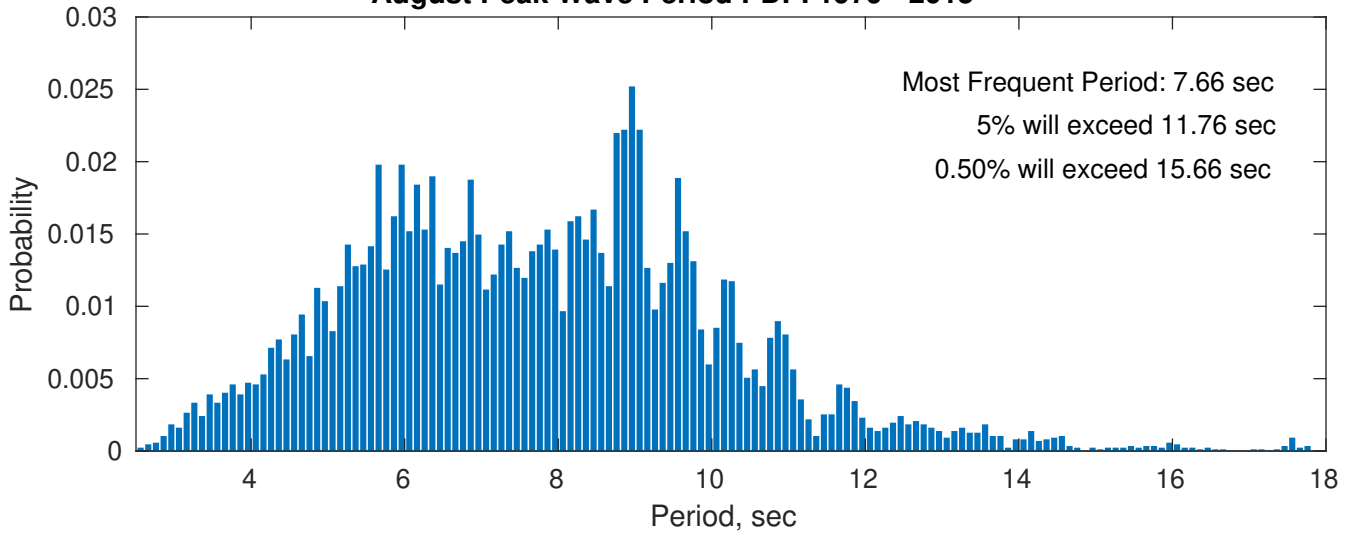
Wind-Sea: 11.02%



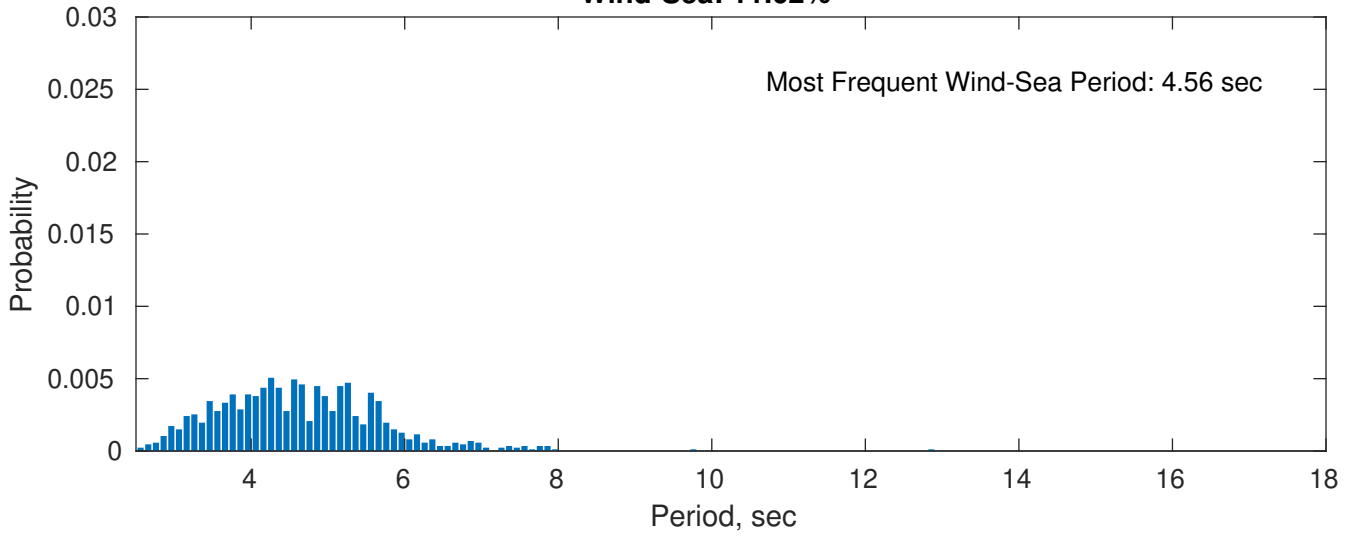
Swell: 88.98%



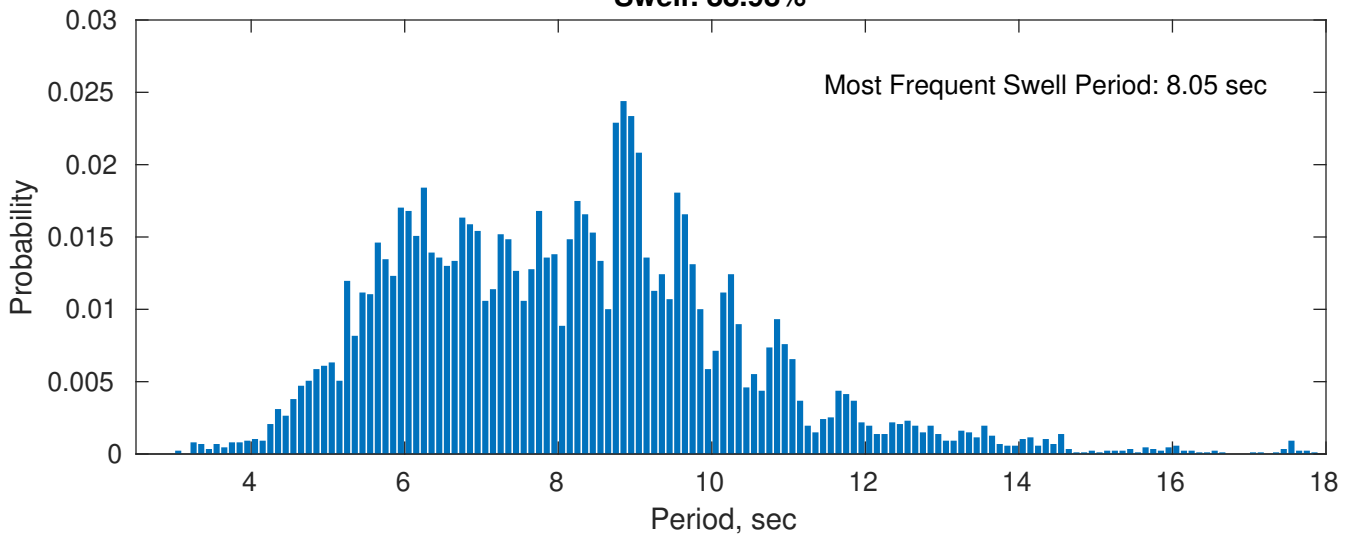
August Peak Wave Period PDF: 1979 - 2015



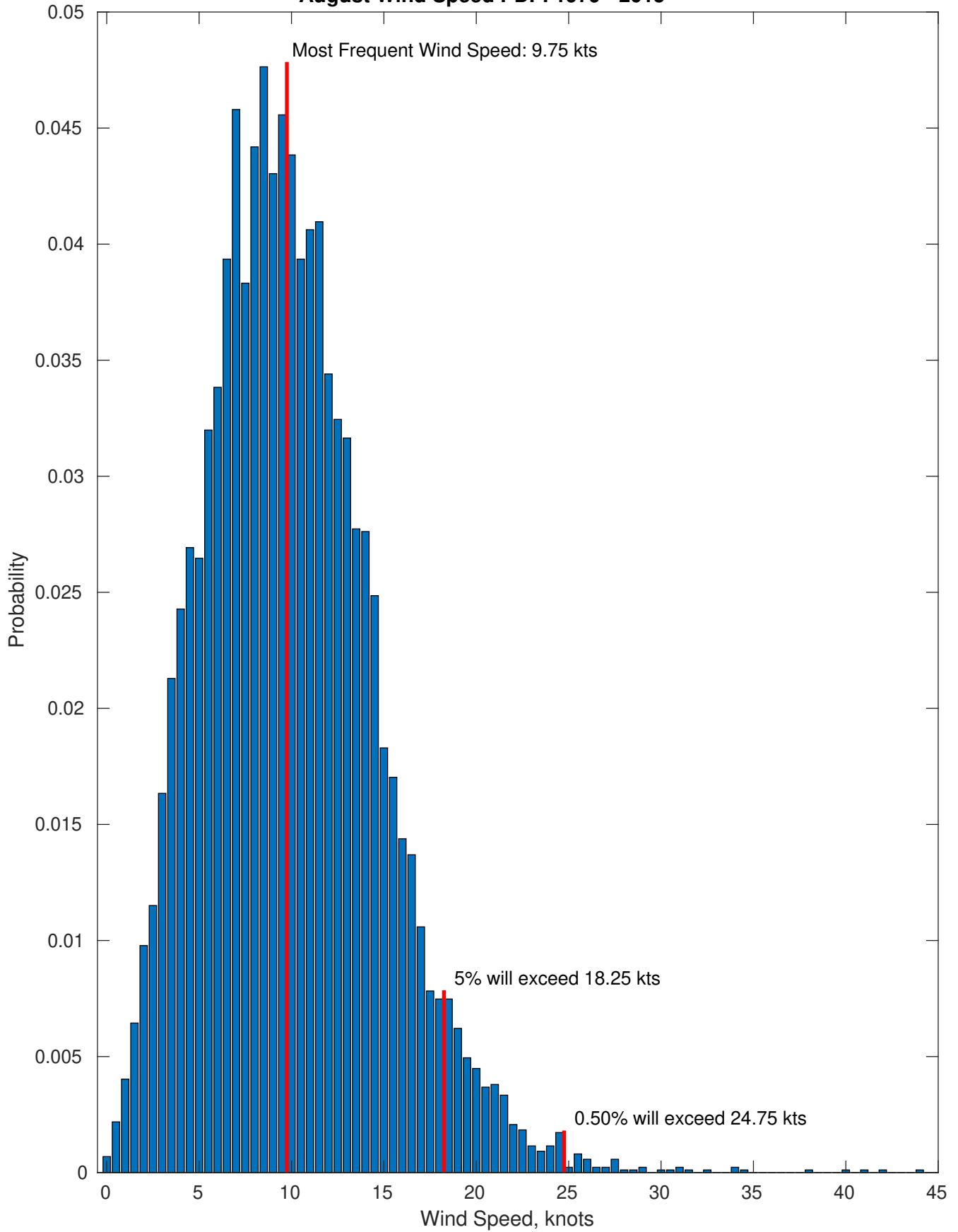
Wind-Sea: 11.02%



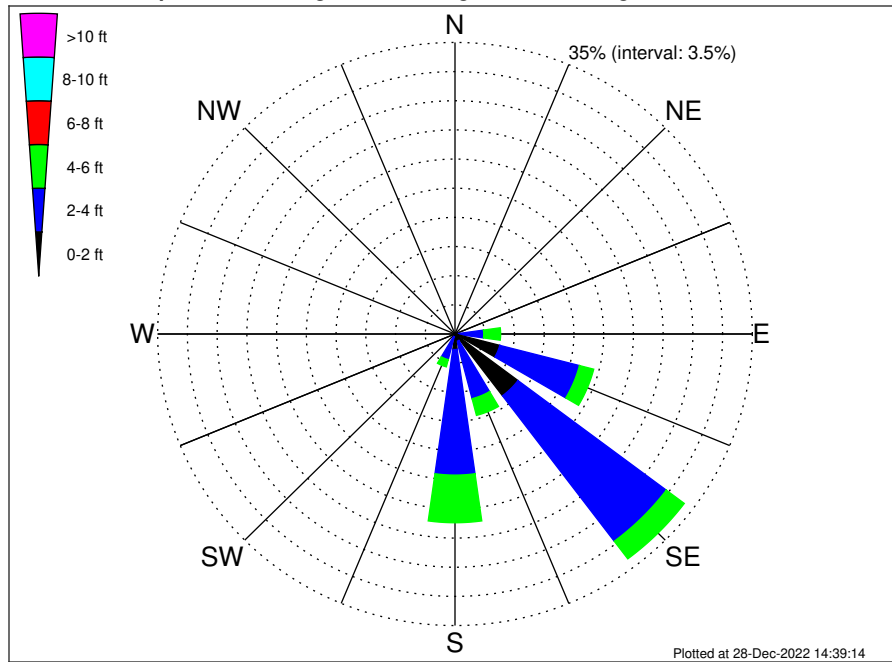
Swell: 88.98%



August Wind Speed PDF: 1979 - 2015



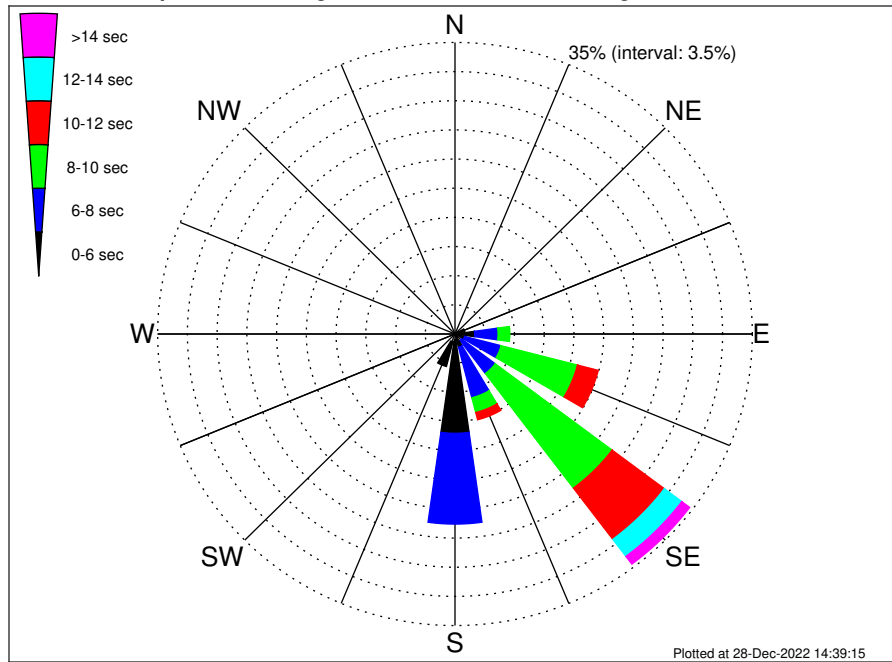
VNE 544 ECR1 Midpoint Climatological WaveHeight Rose for August: 1979 - 2015



Joint Frequency Distribution Table

	N	NNE	NE	ENE	E	ESE	SE	SSE	S	SSW	SW	WSW	W	WNW	NW	NNW	Total
calm	•	•	•	•	•	0.33	0.24	0.01	0.03	•	•	•	•	•	•	•	0.62
1 - 2 ft	•	0.02	0.02	0.09	0.43	5.11	9.04	0.89	1.83	0.33	0.02	0.01	•	•	•	•	17.80
2 - 4 ft	0.23	0.24	0.25	0.75	2.96	9.69	21.86	7.12	15.07	2.84	0.05	•	0.01	0.18	0.15	0.10	61.52
4 - 6 ft	0.01	0.02	0.03	0.36	1.99	1.74	2.65	2.07	5.72	0.90	•	•	•	•	•	0.01	15.50
6 - 8 ft	•	•	0.01	0.10	0.79	0.66	0.58	0.61	0.56	0.01	•	•	•	•	•	•	3.33
8 - 10 ft	•	•	•	0.05	0.40	0.05	0.10	0.25	0.06	•	•	•	•	•	•	•	0.91
10 - 12 ft	•	•	•	•	0.05	•	0.12	0.08	0.01	•	•	•	•	•	•	•	0.25
12 - 14 ft	•	•	•	•	•	•	•	0.01	•	•	•	•	•	•	•	•	0.01
14 - 16 ft	•	•	•	•	•	•	•	0.02	•	•	•	•	•	•	•	•	0.02
16 - 18 ft	•	•	•	•	•	•	•	0.01	•	•	•	•	•	•	•	•	0.01
> 18 ft	•	•	•	•	•	•	•	0.02	•	•	•	•	•	•	•	•	0.02
Total	0.24	0.29	0.32	1.35	6.62	17.57	34.59	11.10	23.29	4.09	0.07	0.01	0.01	0.18	0.15	0.12	100.00

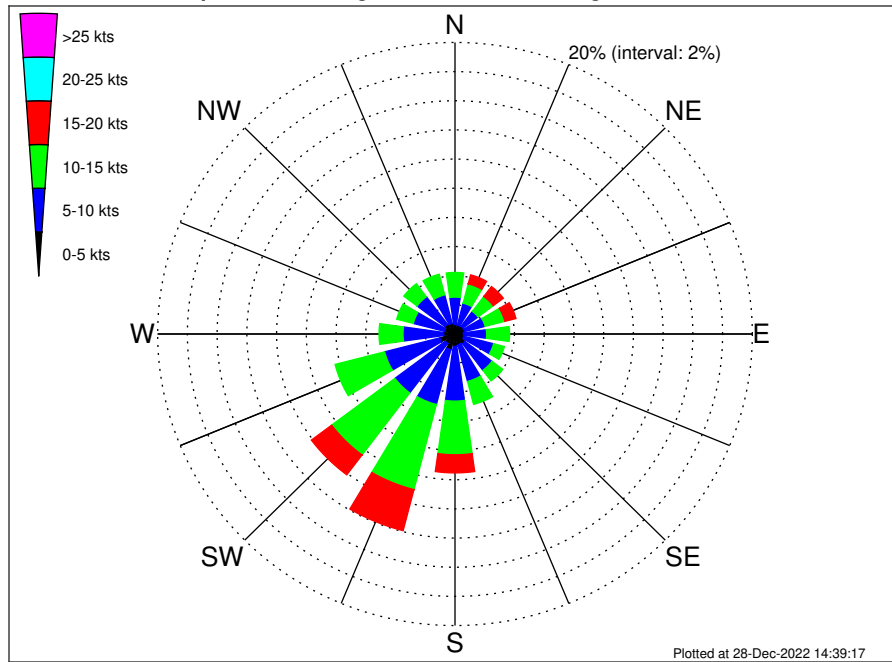
VNE 544 ECR1 Midpoint Climatological WavePeriod Rose for August: 1979 - 2015



Joint Frequency Distribution Table

	N	NNE	NE	E	ESE	SE	SSE	S	SSW	SW	WSW	W	WNW	NW	NNW	Total	
calm	
1 - 2 sec	
2 - 4 sec	0.24	0.28	0.25	0.24	0.14	0.05	0.12	0.06	0.66	0.98	0.07	0.01	0.01	0.18	0.15	0.12	3.54
4 - 6 sec	.	0.01	0.07	0.94	2.19	1.13	0.84	1.59	11.27	3.05	21.08
6 - 8 sec	.	.	.	0.16	2.75	4.43	4.98	6.26	10.90	0.06	29.54
8 - 10 sec	1.38	9.29	17.23	1.83	0.41	30.14
10 - 12 sec	0.16	2.53	7.70	0.90	0.06	11.35
12 - 14 sec	0.14	2.57	0.30	3.00
14 - 16 sec	0.01	0.75	0.17	0.93
18 - 20 sec	0.41	0.41
22 - 24 sec
Total	0.24	0.29	0.32	1.35	6.62	17.57	34.59	11.10	23.29	4.09	0.07	0.01	0.01	0.18	0.15	0.12	100.00

VNE 544 ECR1 Midpoint Climatological Wind Rose for August: 1979 - 2015



Joint Frequency Distribution Table

	N	NNE	NE	ENE	E	ESE	SE	SSE	S	SSW	SW	WSW	W	WNW	NW	NNW	Total
calm	0.02	•	0.01	0.03	0.01	0.02	0.01	0.02	•	0.01	0.02	0.03	•	0.03	0.01	0.03	0.29
0 - 5 kts	0.63	0.63	0.66	0.63	0.56	0.59	0.83	0.74	0.85	1.10	0.79	1.01	0.77	0.70	0.83	0.72	12.06
5 - 10 kts	1.88	1.55	1.28	1.43	1.55	2.07	2.28	2.60	3.75	3.88	4.25	3.84	2.73	2.16	2.36	2.01	39.62
10 - 15 kts	1.69	1.37	1.28	1.37	1.54	0.75	0.91	1.62	3.68	6.03	5.33	3.44	1.61	1.15	1.12	1.46	34.35
15 - 20 kts	0.47	0.63	0.85	0.77	0.37	0.06	0.21	0.22	1.24	2.91	1.70	0.41	0.08	0.12	0.32	0.43	10.79
20 - 25 kts	0.09	0.33	0.46	0.40	0.09	•	0.07	0.10	0.10	0.39	0.14	0.01	0.02	0.05	0.09	0.06	2.42
25 - 30 kts	0.02	0.03	0.07	0.12	•	0.02	0.02	•	0.01	•	•	0.01	•	•	•	•	0.31
30 - 35 kts	•	0.01	0.03	•	•	0.01	0.01	•	•	•	•	•	•	0.01	0.01	0.01	0.10
35 - 40 kts	•	•	•	•	•	0.01	•	•	•	•	•	•	•	•	•	•	0.01
40 - 45 kts	•	0.01	•	•	•	•	•	0.01	•	0.01	•	0.01	•	•	•	•	0.05
45 - 50 kts	•	•	•	•	•	•	•	•	•	•	•	•	•	•	•	•	•
Total	4.81	4.58	4.64	4.75	4.13	3.53	4.34	5.32	9.64	14.34	12.23	8.78	5.21	4.22	4.74	4.73	100.00