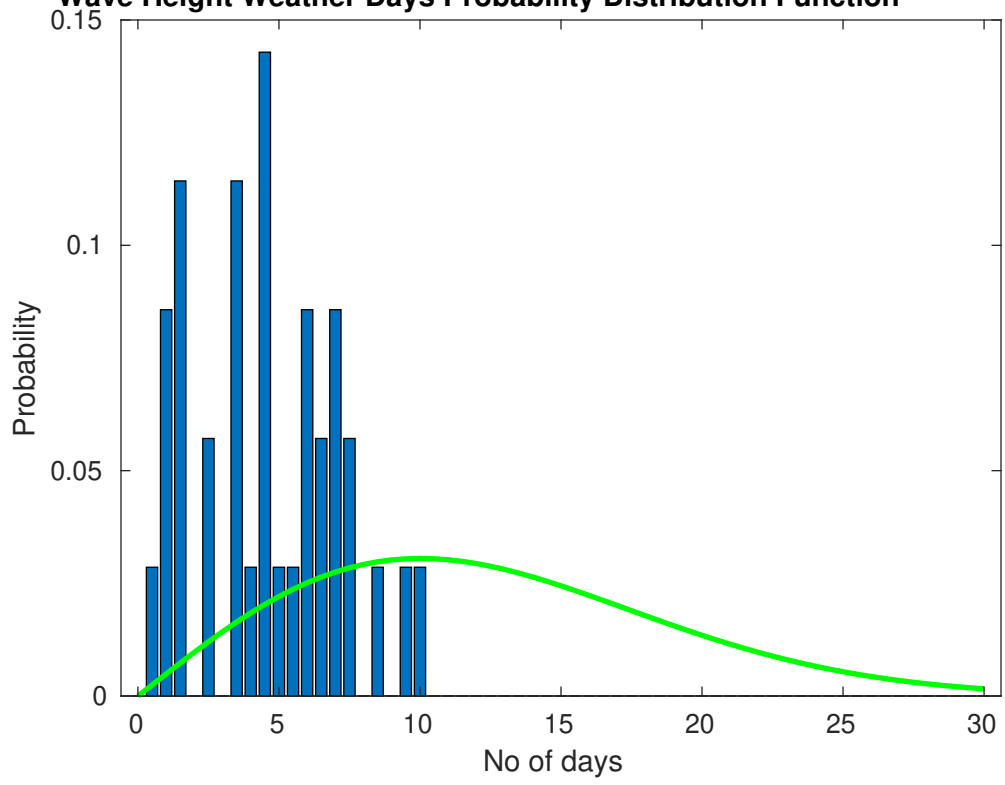
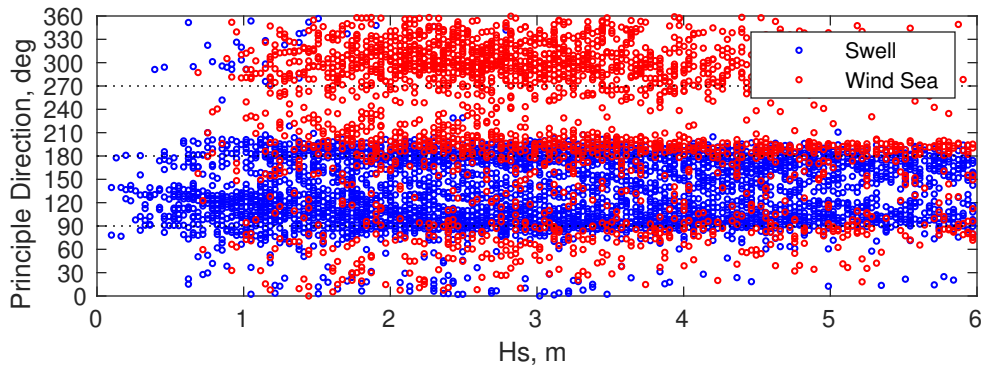
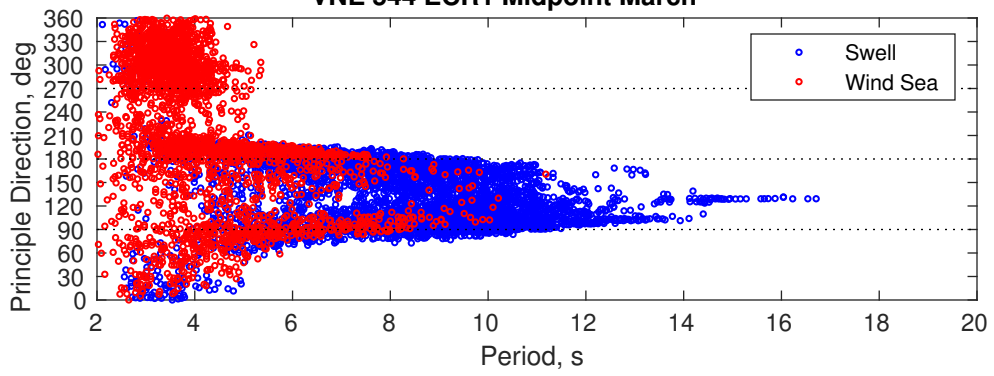


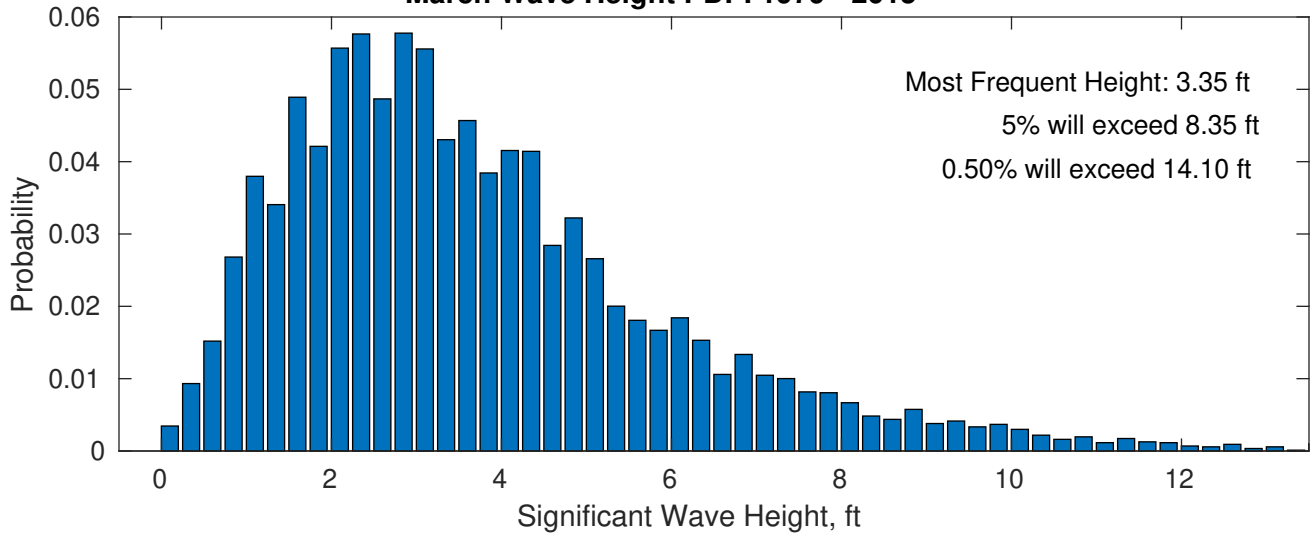
Wave Height Weather Days Probability Distribution Function



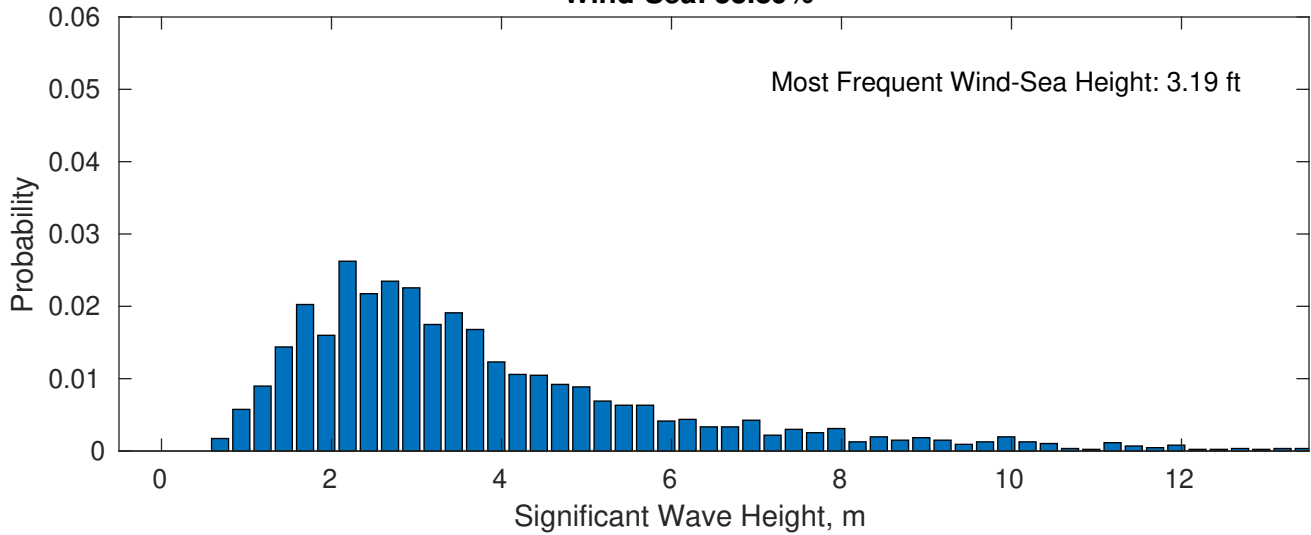
VNE 544 ECR1 Midpoint March



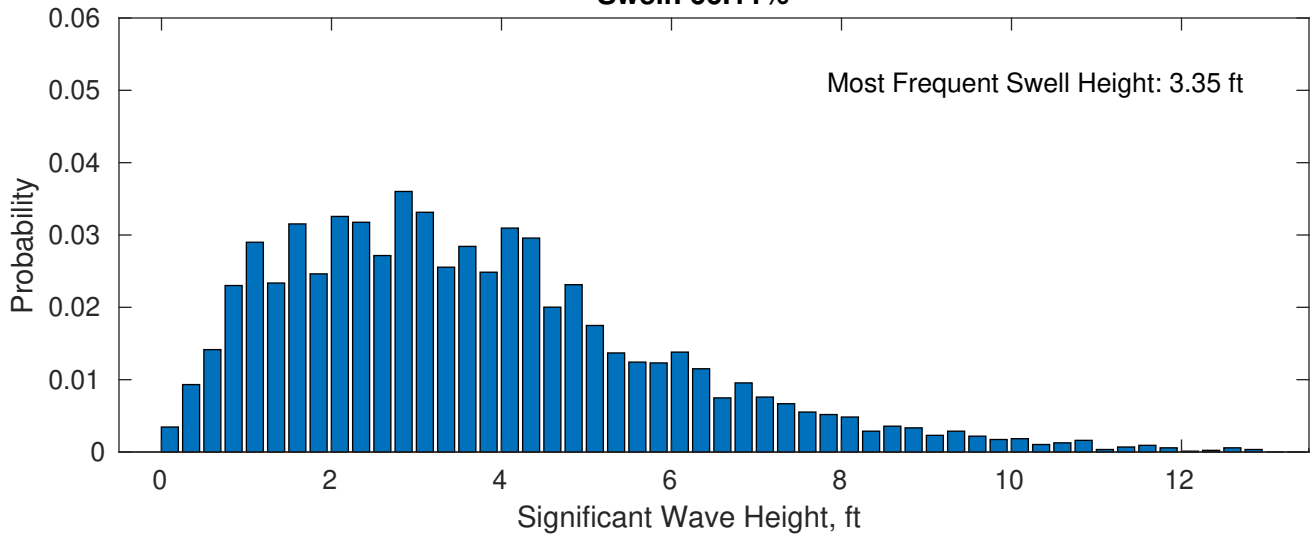
March Wave Height PDF: 1979 - 2015



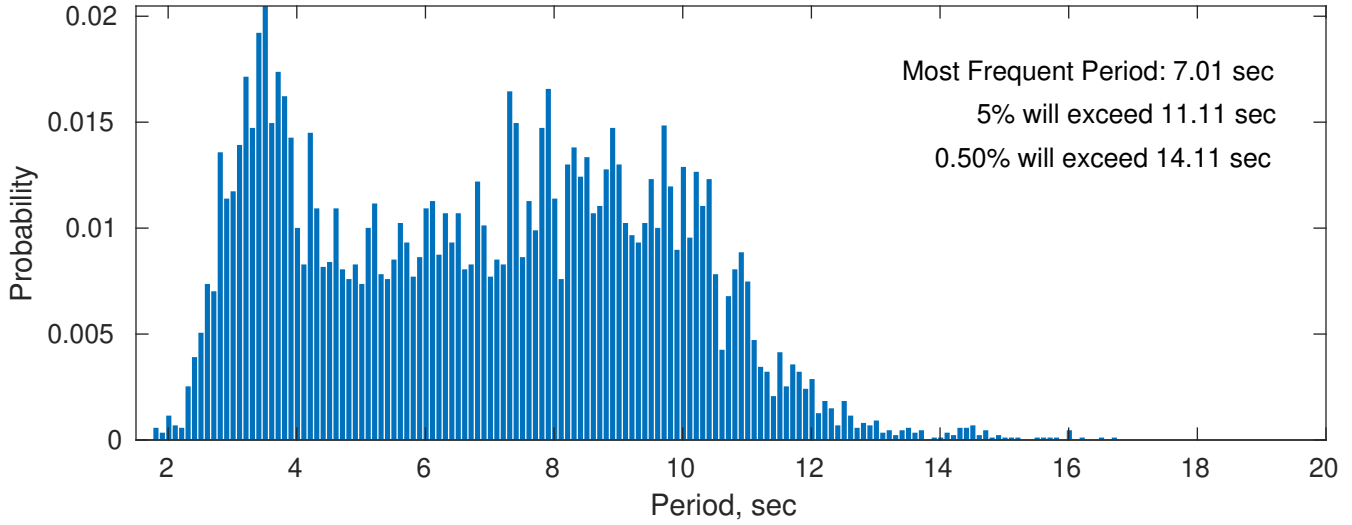
Wind-Sea: 33.89%



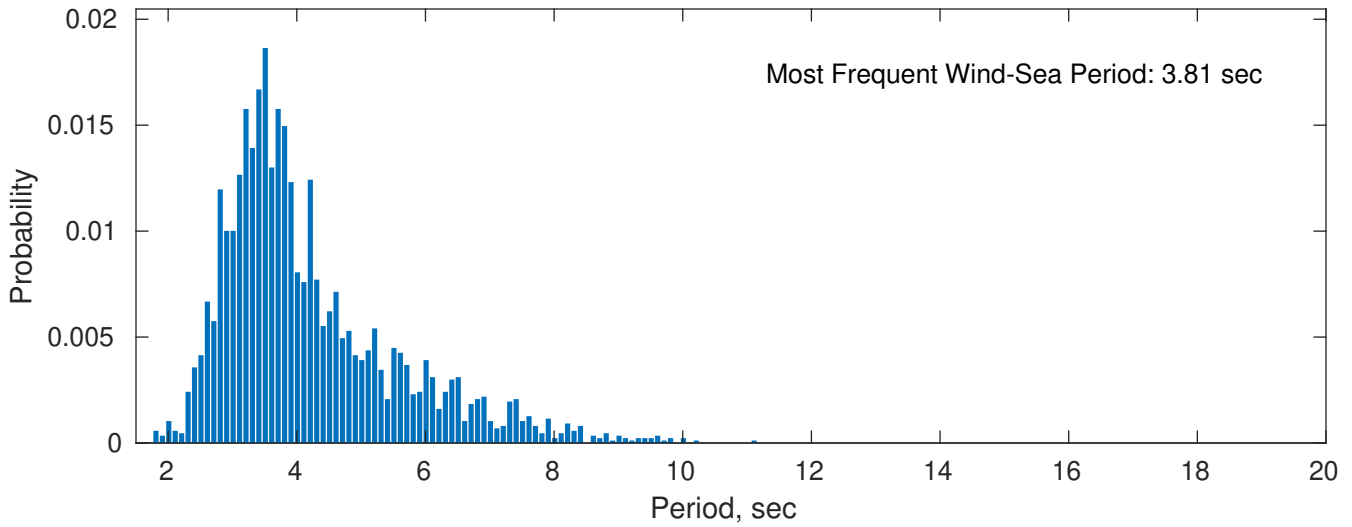
Swell: 66.11%



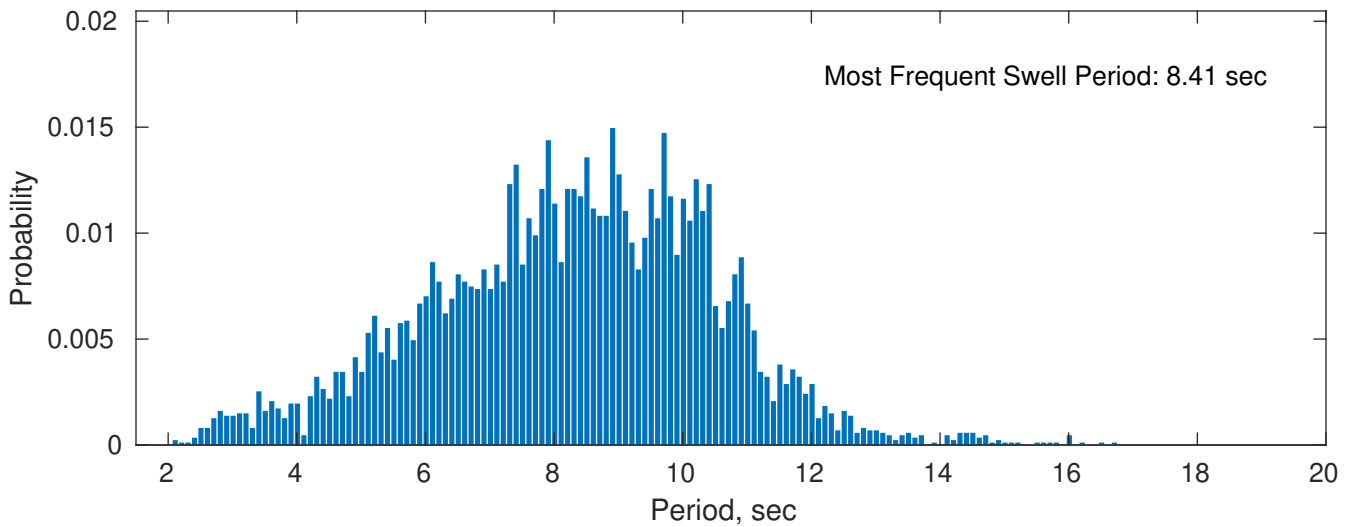
March Peak Wave Period PDF: 1979 - 2015



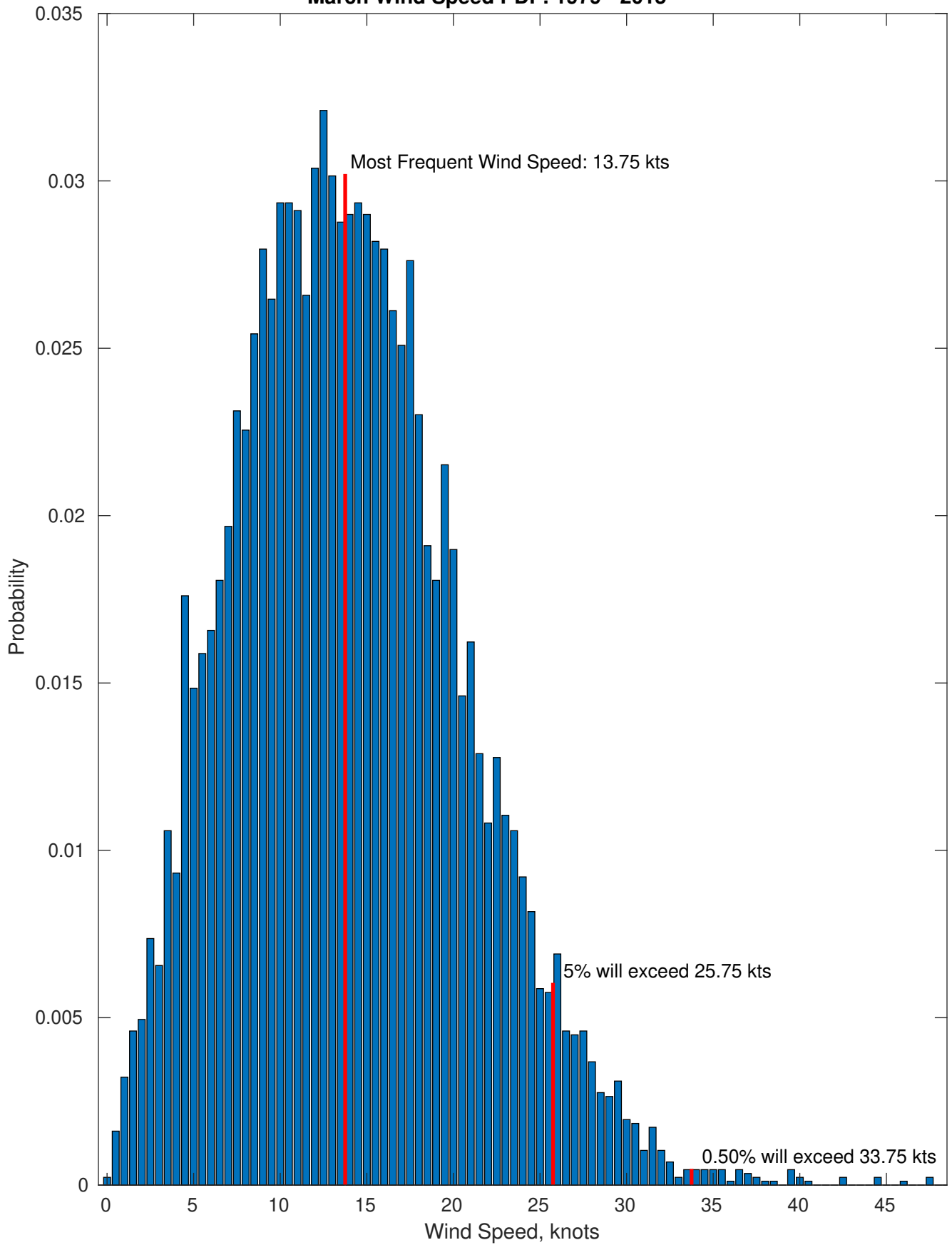
Wind-Sea: 33.89%



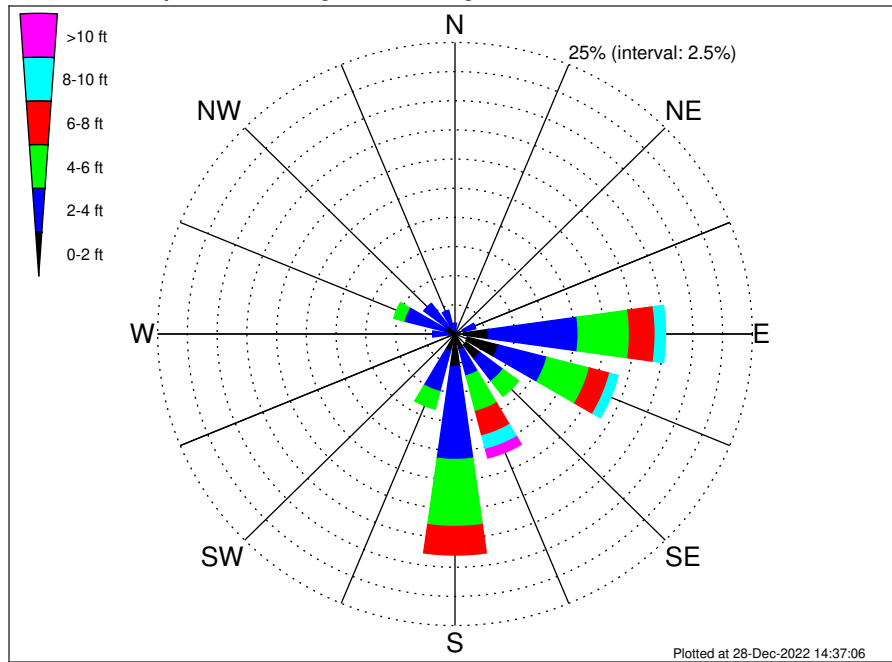
Swell: 66.11%



March Wind Speed PDF: 1979 - 2015



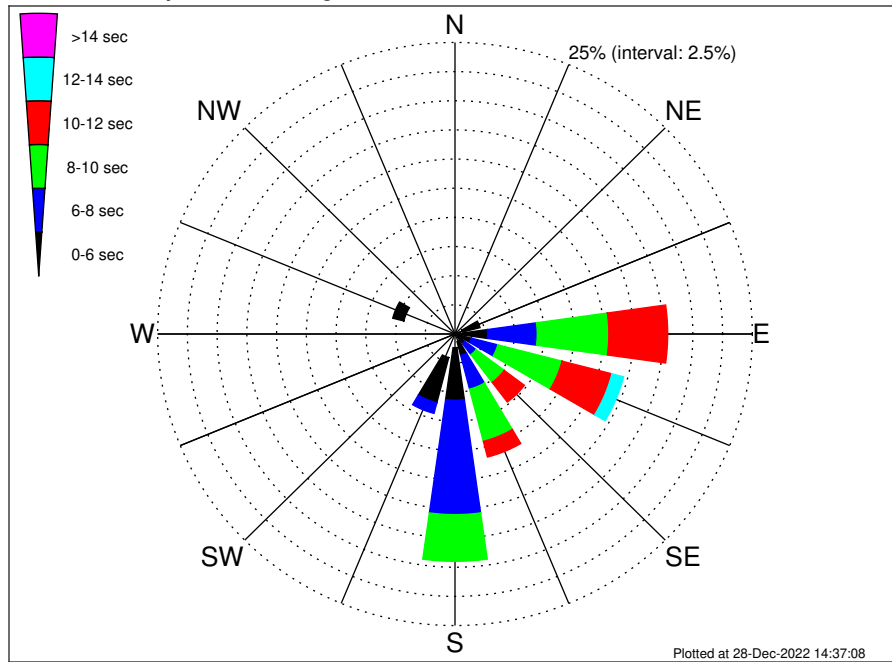
VNE 544 ECR1 Midpoint Climatological WaveHeight Rose for March: 1979 - 2015



Joint Frequency Distribution Table

	N	NNE	NE	ENE	E	ESE	SE	SSE	S	SSW	SW	WSW	W	WNW	NW	NNW	Total
calm	0.02	0.06	0.05	0.16	0.72	1.07	1.16	0.18	0.44	0.18	•	0.03	0.01	0.13	0.05	0.02	4.29
1 - 2 ft	0.23	0.31	0.18	0.58	2.09	2.69	1.46	1.21	2.37	1.36	0.41	0.15	0.51	0.84	0.78	0.51	15.68
2 - 4 ft	0.68	0.41	0.45	1.07	7.54	4.22	2.43	2.31	7.95	3.56	0.38	0.49	1.37	3.48	2.46	1.58	40.38
4 - 6 ft	0.05	0.14	0.18	0.58	4.32	3.69	1.63	3.15	5.74	1.57	0.07	0.13	0.59	0.87	0.38	0.38	23.46
6 - 8 ft	•	0.02	0.01	0.18	2.16	1.76	0.55	2.16	2.45	0.36	•	0.02	0.07	0.07	•	0.01	9.84
8 - 10 ft	•	•	•	0.02	0.86	0.74	0.30	1.20	0.61	0.01	•	•	•	0.02	0.01	•	3.77
10 - 12 ft	•	•	•	•	0.41	0.21	0.22	0.49	0.22	•	•	•	•	•	•	•	1.55
12 - 14 ft	•	•	•	•	0.08	0.14	0.09	0.16	0.02	•	•	•	•	•	•	•	0.49
14 - 16 ft	•	•	•	•	0.05	0.07	0.09	0.08	•	•	•	•	•	•	•	•	0.29
16 - 18 ft	•	•	•	•	0.02	0.06	0.08	0.03	•	•	•	•	•	•	•	•	0.20
> 18 ft	•	•	•	•	•	0.03	•	•	•	•	•	•	•	•	•	•	0.03
Total	0.98	0.94	0.87	2.59	18.26	14.68	8.02	10.99	19.80	7.03	0.86	0.83	2.54	5.41	3.68	2.50	100.00

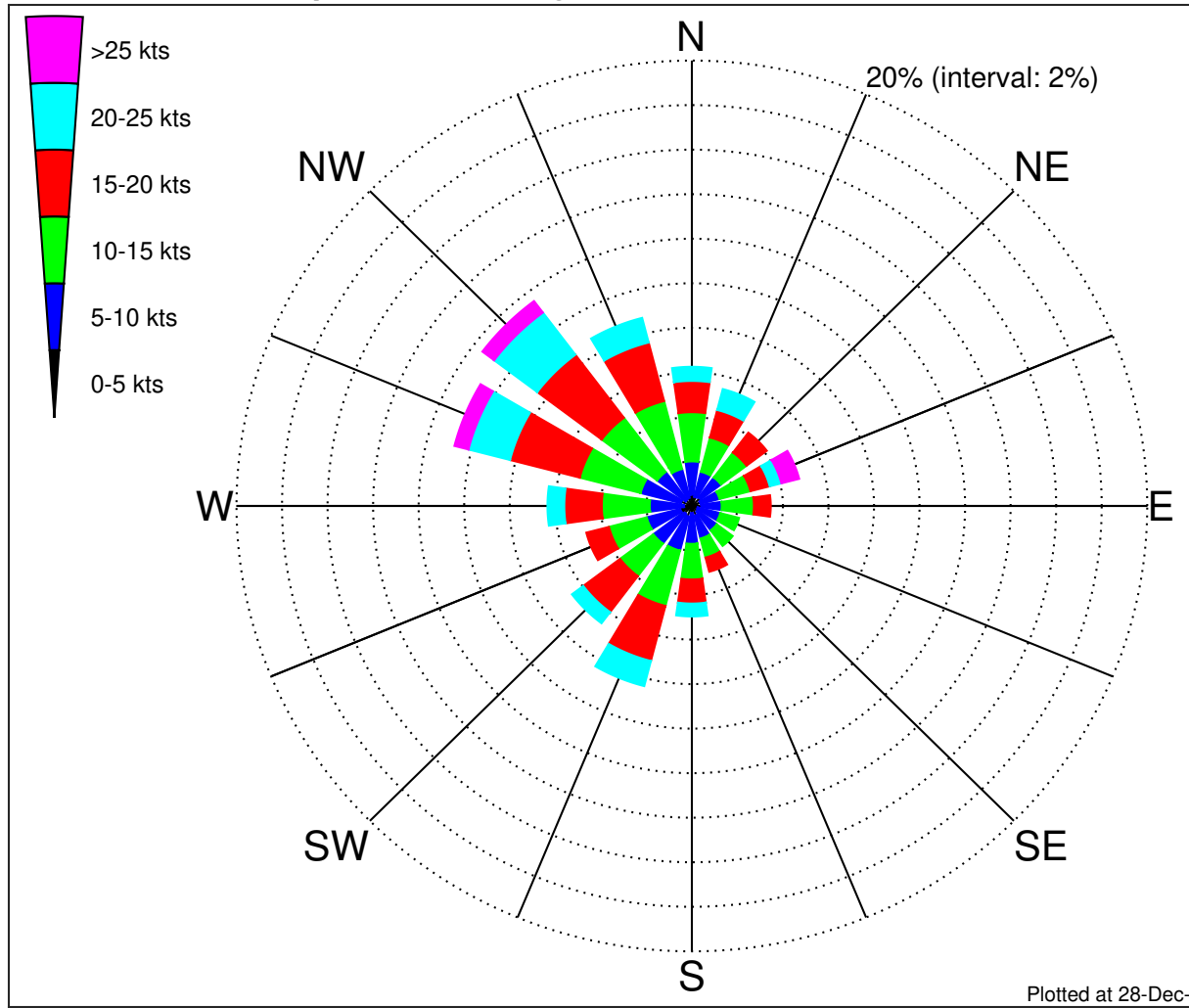
VNE 544 ECR1 Midpoint Climatological WavePeriod Rose for March: 1979 - 2015



Joint Frequency Distribution Table

	N	NNE	NE	ENE	E	ESE	SE	SSE	S	SSW	SW	WSW	W	WNW	NW	NNW	Total
calm	•	•	•	•	•	•	•	•	•	•	•	•	•	•	•	•	•
1 - 2 sec	•	•	•	0.02	•	0.01	•	0.02	0.01	0.01	•	0.01	•	•	•	•	0.09
2 - 4 sec	0.92	0.74	0.59	0.64	0.45	0.32	0.31	0.63	1.16	2.07	0.76	0.59	1.93	4.44	3.42	2.23	21.21
4 - 6 sec	0.06	0.21	0.29	1.51	2.29	1.09	0.74	1.24	4.51	4.00	0.10	0.23	0.61	0.97	0.26	0.26	18.38
6 - 8 sec	•	•	•	0.30	4.18	2.29	1.17	2.98	9.80	0.94	•	•	•	•	•	•	21.67
8 - 10 sec	•	•	•	0.12	6.02	5.58	2.97	4.63	4.00	•	•	•	•	•	•	•	23.31
10 - 12 sec	•	•	•	•	4.95	4.34	2.12	1.39	0.31	•	•	•	•	•	•	•	13.11
12 - 14 sec	•	•	•	•	0.38	1.01	0.23	0.09	•	•	•	•	•	•	•	•	1.71
14 - 16 sec	•	•	•	•	•	0.03	0.40	•	•	•	•	•	•	•	•	•	0.44
18 - 20 sec	•	•	•	•	•	•	0.08	•	•	•	•	•	•	•	•	•	0.08
22 - 24 sec	•	•	•	•	•	•	•	•	•	•	•	•	•	•	•	•	•
Total	0.98	0.94	0.87	2.59	18.26	14.68	8.02	10.99	19.80	7.03	0.86	0.83	2.54	5.41	3.68	2.50	100.00

VNE 544 ECR1 Midpoint Climatological Wind Rose for March: 1979 - 2015



Joint-Frequency Distribution Table

	N	NNE	NE	ENE	E	ESE	SE	SSE	S	SSW	SW	WSW	W	WNW	NW
calm	•	0.02	•	0.01	0.01	0.03	•	0.02	0.01	0.02	0.01	0.01	•	0.01	0.01
0 - 5 kts	0.51	0.40	0.48	0.38	0.40	0.23	0.32	0.43	0.31	0.47	0.43	0.52	0.35	0.48	0.33
5 - 10 kts	1.50	1.16	1.12	0.86	0.90	1.02	1.05	1.06	1.38	1.58	1.68	1.52	1.51	1.83	1.57
10 - 15 kts	2.21	1.59	1.40	1.40	1.42	0.85	0.87	0.89	1.60	2.57	1.83	1.71	2.11	2.76	3.05
15 - 20 kts	1.40	1.28	1.12	0.87	0.74	0.30	0.45	0.66	1.08	2.55	2.03	1.02	1.65	3.16	3.54