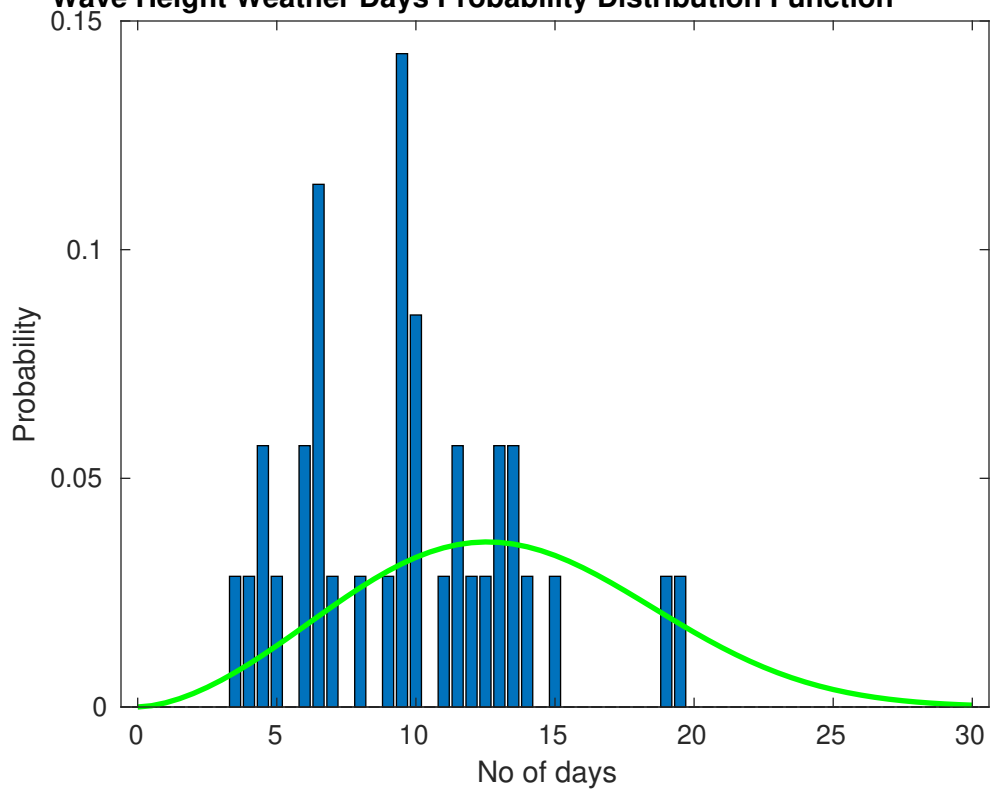
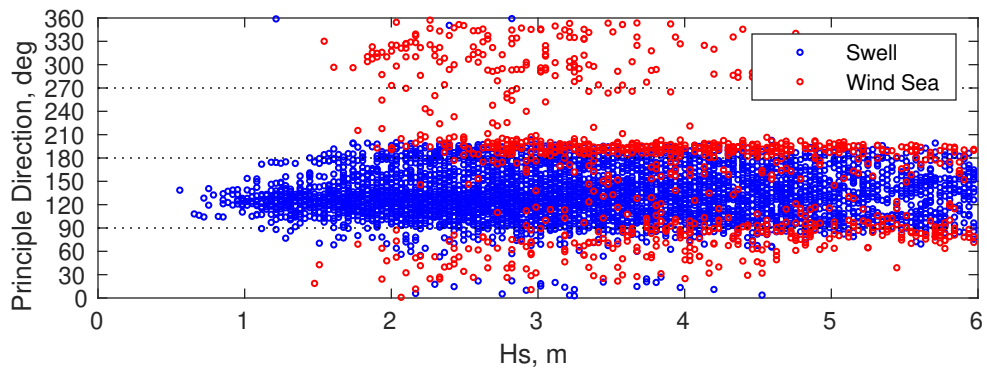
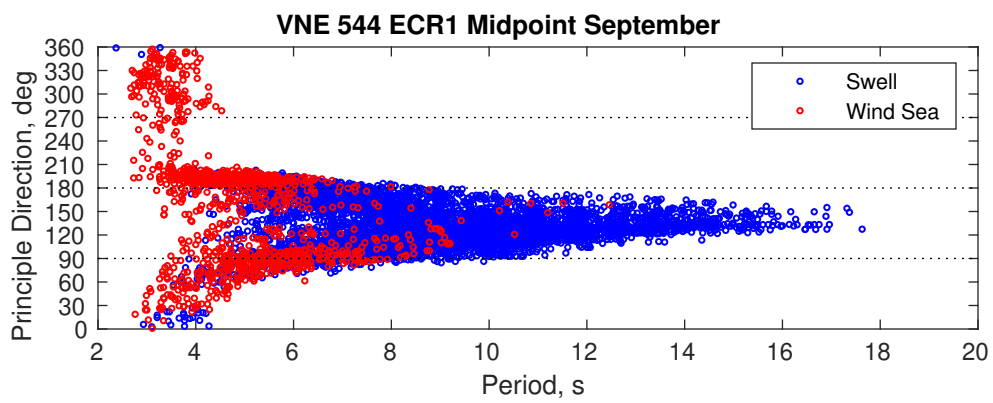
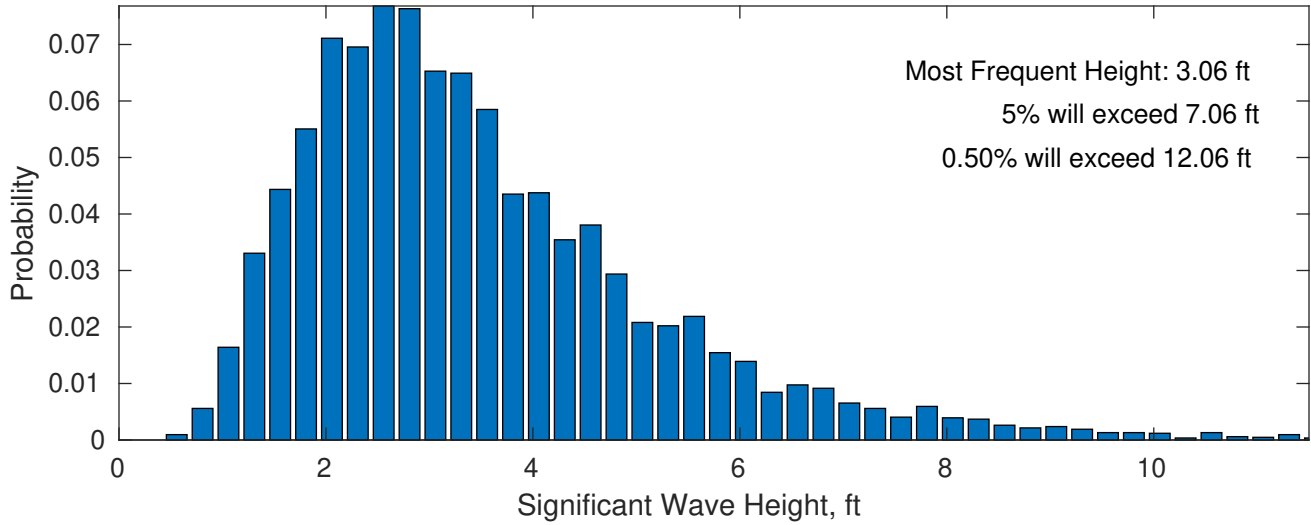


Wave Height Weather Days Probability Distribution Function

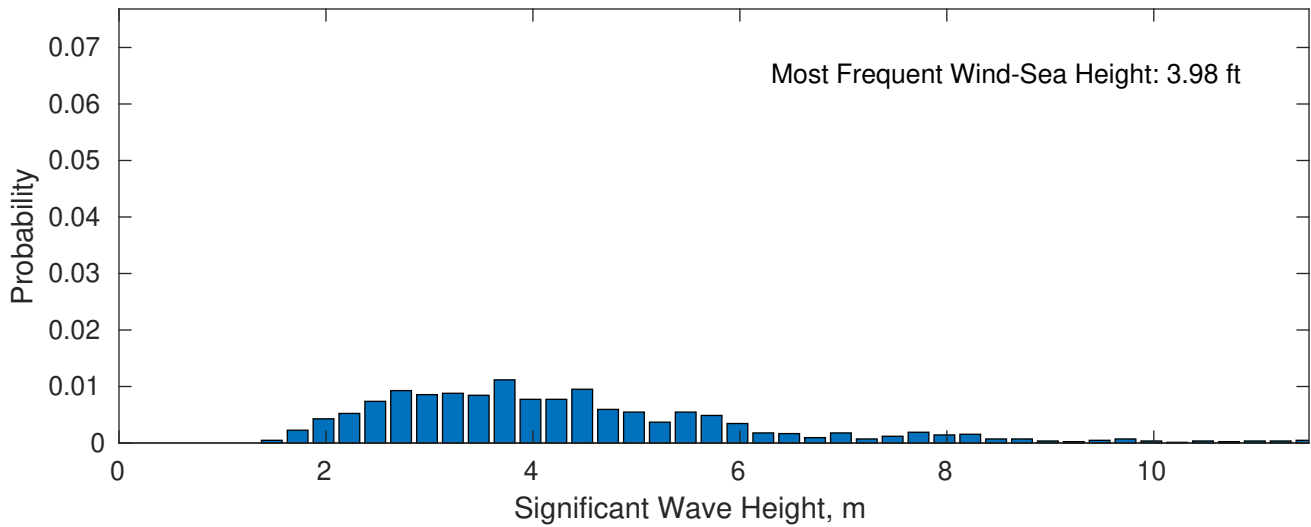




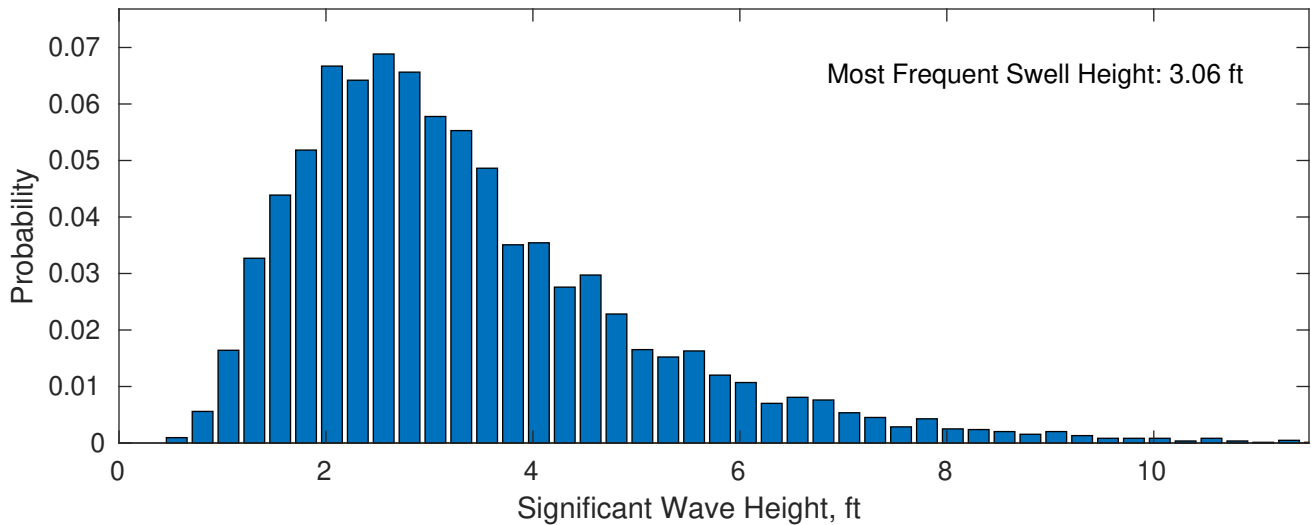
September Wave Height PDF: 1979 - 2015



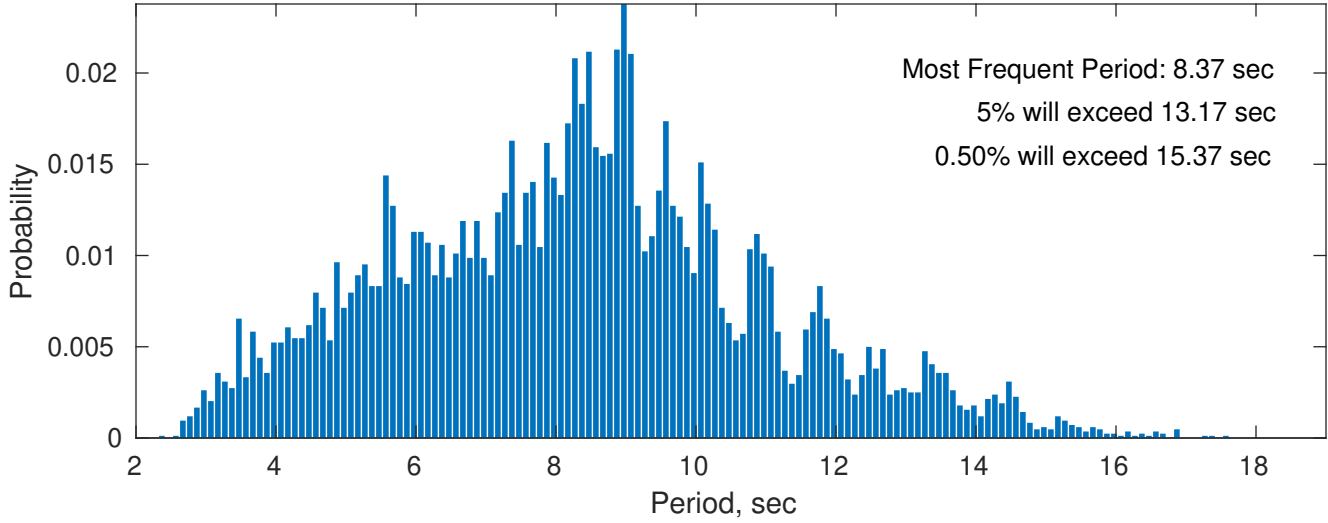
Wind-Sea: 14.19%



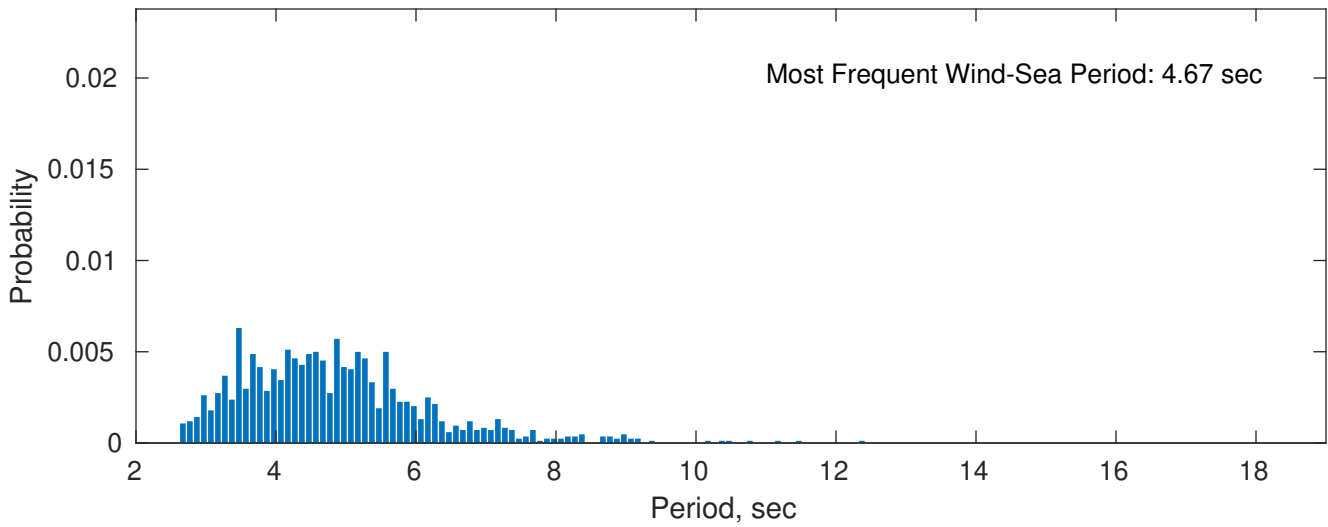
Swell: 85.81%



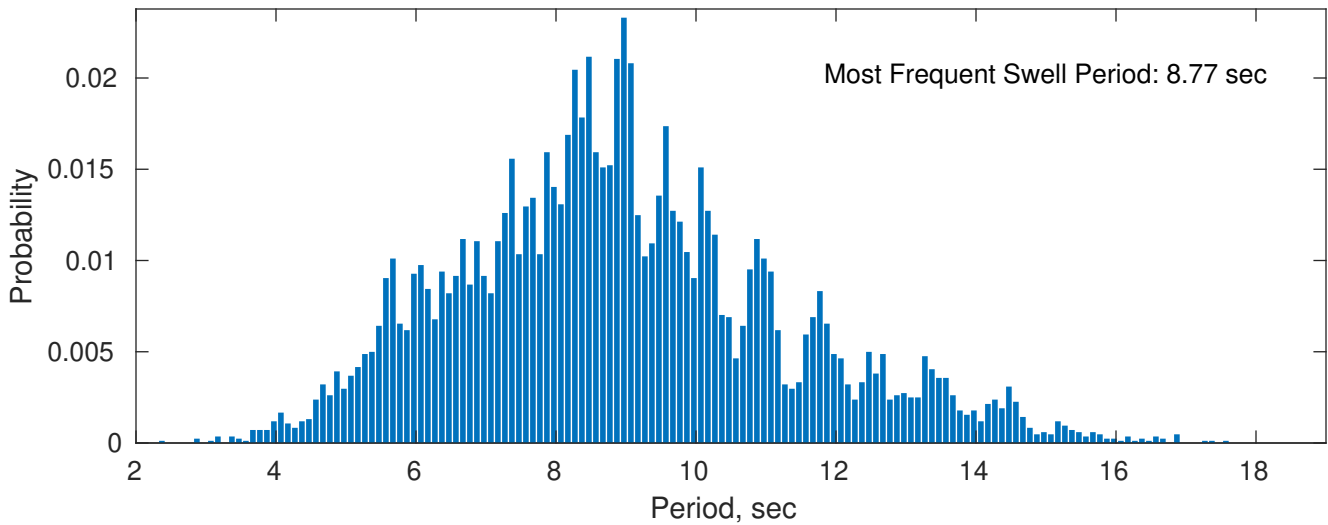
September Peak Wave Period PDF: 1979 - 2015



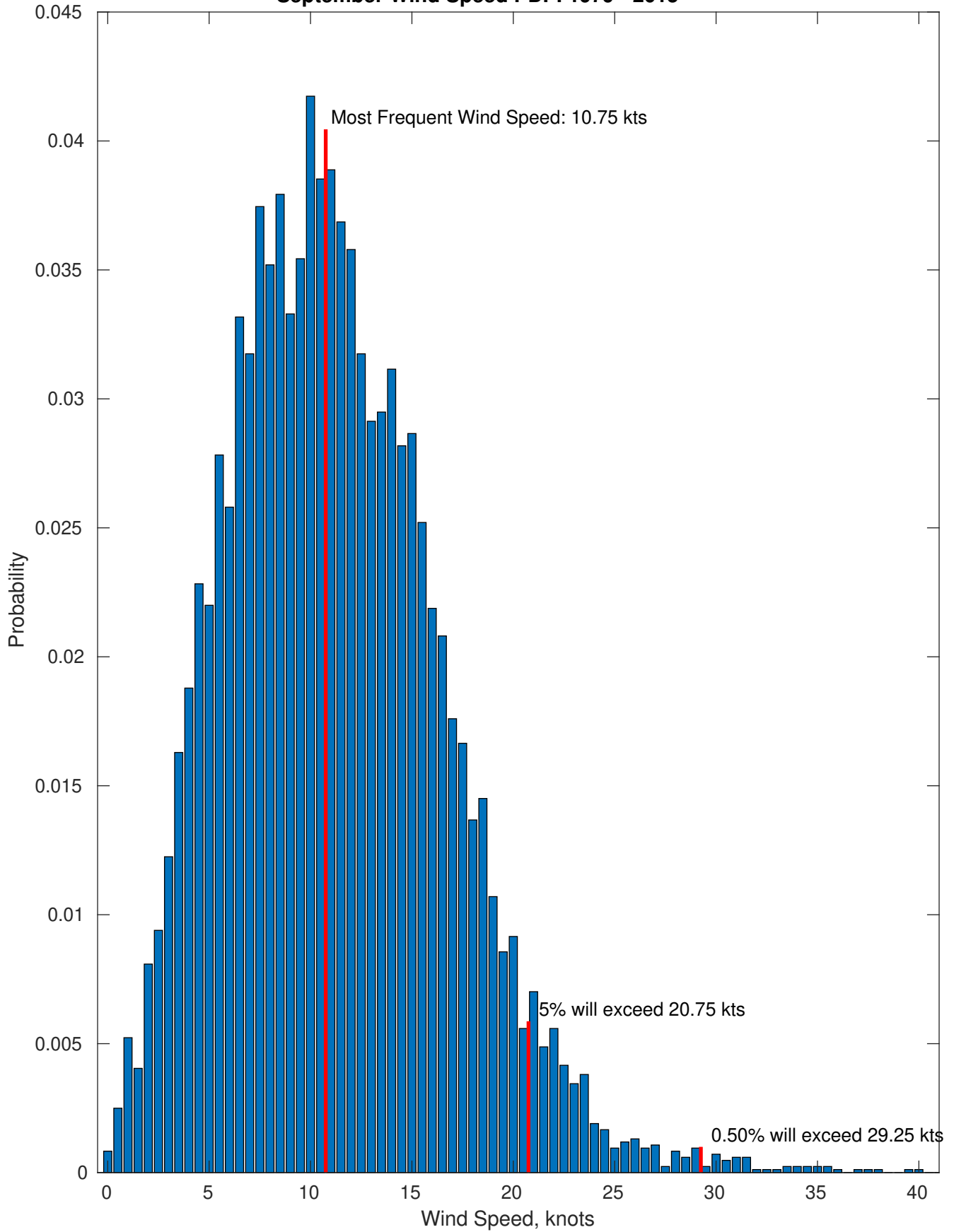
Wind-Sea: 14.19%



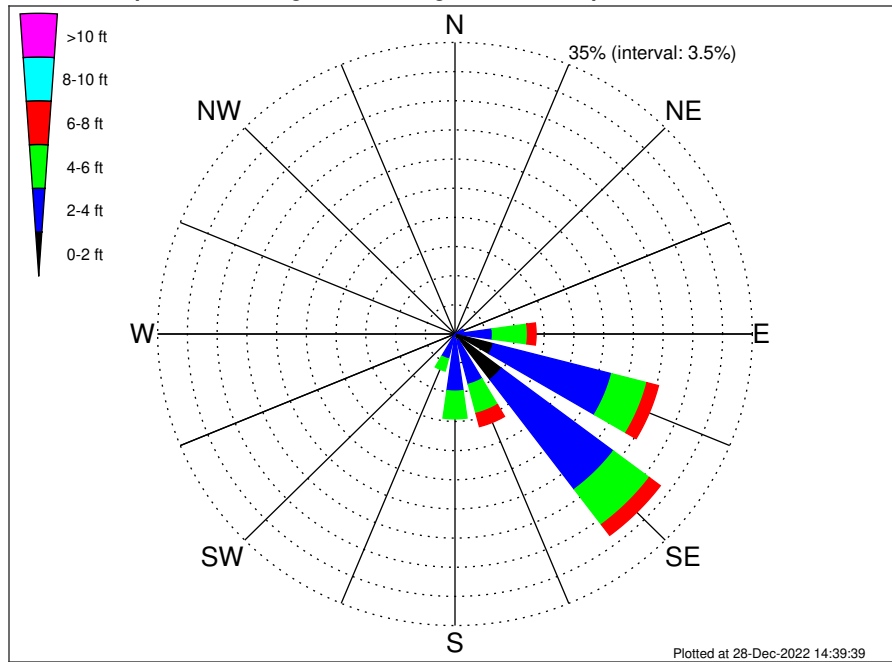
Swell: 85.81%



September Wind Speed PDF: 1979 - 2015



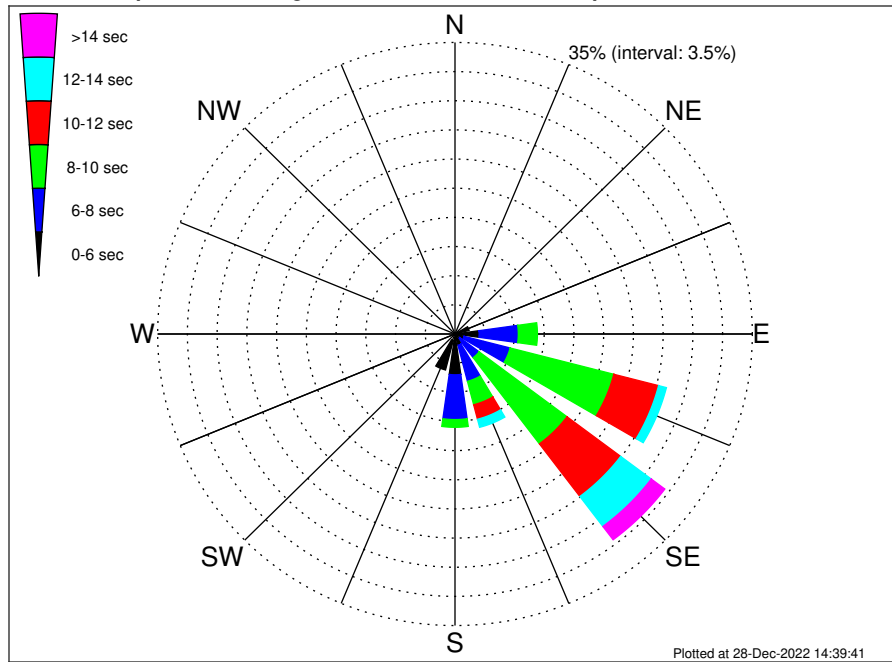
VNE 544 ECR1 Midpoint Climatological WaveHeight Rose for September: 1979 - 2015



Joint Frequency Distribution Table

	N	NNE	NE	ENE	E	ESE	SE	SSE	S	SSW	SW	WSW	W	WNW	NW	NNW	Total
calm	•	•	•	•	•	0.20	0.29	•	•	•	•	•	•	•	•	•	0.49
1 - 2 ft	0.01	0.02	0.02	0.13	0.30	4.46	6.56	0.86	0.61	0.13	0.02	0.01	•	0.04	0.11	0.01	13.29
2 - 4 ft	0.24	0.36	0.38	0.94	4.11	14.39	16.50	5.39	6.25	2.95	0.07	0.08	0.20	0.40	0.34	0.44	53.06
4 - 6 ft	0.02	0.05	0.15	0.71	4.13	4.29	5.29	3.60	3.33	1.51	0.01	•	0.01	0.11	0.04	0.05	23.31
6 - 8 ft	•	•	•	0.10	1.01	1.40	1.62	1.64	0.86	0.07	•	•	•	•	•	•	6.69
8 - 10 ft	•	•	•	0.01	0.44	0.61	0.46	0.36	0.17	•	•	•	•	•	•	•	2.05
10 - 12 ft	•	•	•	•	0.13	0.21	0.07	0.06	0.08	•	•	•	•	•	•	•	0.56
12 - 14 ft	•	•	•	•	0.04	0.19	0.06	0.06	0.02	•	•	•	•	•	•	•	0.37
14 - 16 ft	•	•	•	•	•	0.02	0.06	0.04	•	•	•	•	•	•	•	•	0.12
16 - 18 ft	•	•	•	•	•	•	0.01	0.02	•	•	•	•	•	•	•	•	0.04
> 18 ft	•	•	•	•	•	•	•	0.04	•	•	•	•	•	•	•	•	0.04
Total	0.27	0.43	0.56	1.89	10.15	25.78	30.93	12.06	11.32	4.66	0.11	0.10	0.21	0.55	0.49	0.50	100.00

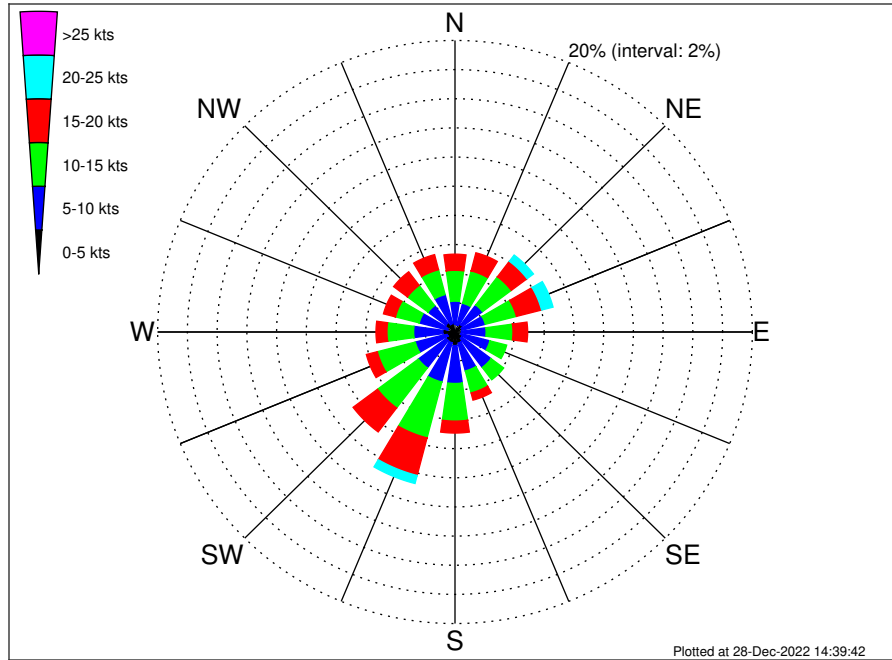
VNE 544 ECR1 Midpoint Climatological WavePeriod Rose for September: 1979 - 2015



Joint Frequency Distribution Table

	N	NNE	NE	ENE	E	ESE	SE	SSE	S	SSW	SW	WSW	W	WNW	NW	NNW	Total
calm	•	•	•	•	•	•	•	•	•	•	•	•	•	•	•	•	•
1 - 2 sec	•	•	•	•	•	•	•	•	•	•	•	•	•	•	•	•	•
2 - 4 sec	0.25	0.32	0.33	0.21	0.08	0.06	0.06	0.06	0.42	0.81	0.10	0.10	0.20	0.44	0.46	0.46	4.36
4 - 6 sec	0.02	0.11	0.23	1.50	2.76	1.05	0.64	1.33	4.48	3.65	0.01	•	0.01	0.11	0.02	0.04	15.96
6 - 8 sec	•	•	•	0.18	4.61	5.60	2.85	4.47	5.37	0.20	•	•	•	•	•	•	23.29
8 - 10 sec	•	•	•	•	2.25	12.60	12.96	2.91	0.93	•	•	•	•	•	•	•	31.65
10 - 12 sec	•	•	•	•	0.45	5.45	7.91	1.80	0.10	•	•	•	•	•	•	•	15.70
12 - 14 sec	•	•	•	•	•	0.95	4.51	1.00	0.02	•	•	•	•	•	•	•	6.48
14 - 16 sec	•	•	•	•	•	0.07	1.82	0.43	•	•	•	•	•	•	•	•	2.32
18 - 20 sec	•	•	•	•	•	•	0.18	0.06	•	•	•	•	•	•	•	•	0.24
22 - 24 sec	•	•	•	•	•	•	•	•	•	•	•	•	•	•	•	•	•
Total	0.27	0.43	0.56	1.89	10.15	25.78	30.93	12.06	11.32	4.66	0.11	0.10	0.21	0.55	0.49	0.50	100.00

VNE 544 ECR1 Midpoint Climatological Wind Rose for September: 1979 - 2015



Joint Frequency Distribution Table

	N	NNE	NE	ENE	E	ESE	SE	SSE	S	SSW	SW	WSW	W	WNW	NW	NNW	Total
calm	0.04	0.01	0.01	0.04	•	0.01	•	0.05	0.01	0.01	•	0.02	0.05	0.05	0.02	0.01	0.33
0 - 5 kts	0.49	0.49	0.62	0.46	0.44	0.40	0.56	0.74	0.92	0.75	0.74	0.52	0.77	0.46	0.75	0.58	9.69
5 - 10 kts	1.59	1.53	1.69	1.61	1.65	2.01	2.49	1.97	2.60	2.78	2.35	2.21	1.96	1.97	1.50	2.06	31.99
10 - 15 kts	2.12	2.29	2.43	2.16	1.81	1.17	1.06	1.56	2.58	3.96	3.44	2.64	1.80	1.65	1.74	1.76	34.15
15 - 20 kts	1.11	1.28	1.33	1.75	0.99	0.49	0.26	0.51	0.82	2.66	2.06	0.76	0.74	0.83	1.17	1.07	17.82
20 - 25 kts	0.21	0.40	0.54	0.80	0.25	0.04	0.10	0.21	0.30	0.57	0.25	0.11	0.14	0.24	0.26	0.31	4.72
25 - 30 kts	0.01	0.11	0.07	0.24	0.06	0.06	0.01	0.04	0.07	0.04	0.02	0.02	0.01	0.02	0.05	•	0.83
30 - 35 kts	•	0.02	0.04	0.04	0.08	0.04	0.02	0.01	0.04	0.02	0.01	•	•	0.02	•	•	0.34
35 - 40 kts	•	0.01	•	0.01	0.06	•	•	0.01	•	•	•	0.01	•	•	•	•	0.11
40 - 45 kts	•	•	•	•	•	•	0.01	•	•	•	•	•	•	•	•	•	0.01
45 - 50 kts	•	•	•	•	•	•	•	•	•	•	•	•	•	•	•	•	•
Total	5.56	6.16	6.72	7.10	5.34	4.21	4.51	5.10	7.34	10.80	8.87	6.30	5.47	5.26	5.48	5.79	100.00