

## VNE 544 ECR2 Asbury Park NJ Shore Landing - August

Latitude: 40.23 N Longitude: 73.97 W

### Weather Days

Wave Height > 4.0 ft Mean: 1.6 days Range: 0.0 - 3.5 days p50:2 days p75:1 days p90:0.5 days

Wave Height > 5.0 ft Mean: 0.7 days Range: 0.0 - 2.1 days p50:0.5 days p75:0.5 days p90:0.5 days

Wave Height > 6.0 ft Mean: 0.3 days Range: 0.0 - 1.1 days p50:0.5 days p75:0.5 days p90:0.5 days

Wind Speed > 20.0 knots Mean: 0.1 days Range: 0.0 - 0.2 days p50:0.5 days p75:0.5 days p90:0.5 days

Wind Speed > 25.0 knots Mean: 0.0 days Range: 0.0 - 0.1 days p50:0.5 days p75:0.5 days p90:0.5 days

Wind Speed > 30.0 knots Mean: 0.0 days Range: 0.0 - 0.0 days p50:0.5 days p75:0.5 days p90:0.5 days

### Working Window Probability

Wave Height < 4.0 ft 3 days or longer: 84%

5 days or longer: 65%

7 days or longer: 56%

Wave Height < 5.0 ft 3 days or longer: 94%

5 days or longer: 85%

7 days or longer: 79%

Wave Height < 6.0 ft 3 days or longer: 94%

5 days or longer: 88%

7 days or longer: 88%

### Waves

Mean Height: 1 - 2 ft

The wave heights will occasionally reach 6 - 8 ft, but rarely higher.

Mean Period: 6 - 8 sec

The wave periods will occasionally reach 14 - 16 sec, but rarely longer.

Principle Direction, from: ESE

WindSea/Swell: 3% / 97%

### Winds

Mean Speed: 5 - 10 kts

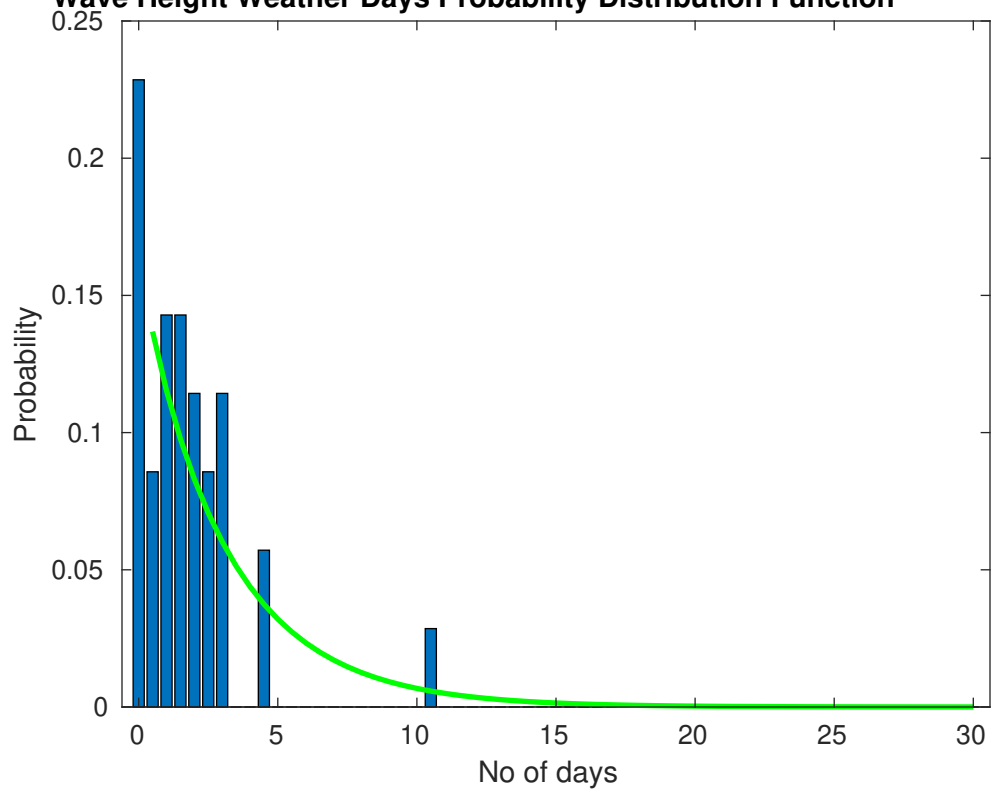
The winds will occasionally reach 15 - 20 kts, but rarely greater.

Principle Direction, from: SSW

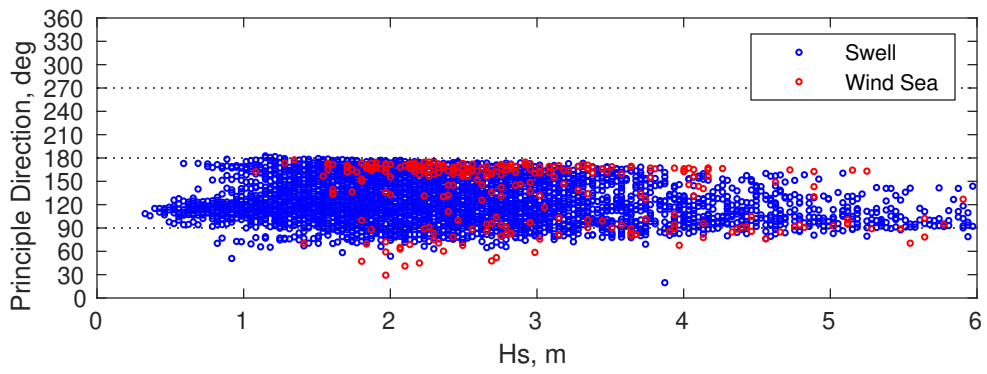
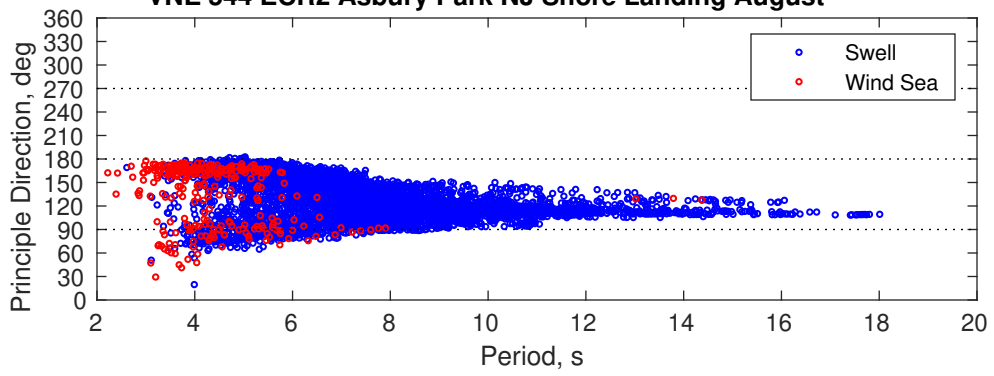
### Severe Storms

Severe storms with gale force winds and extreme waves are not expected during this month.

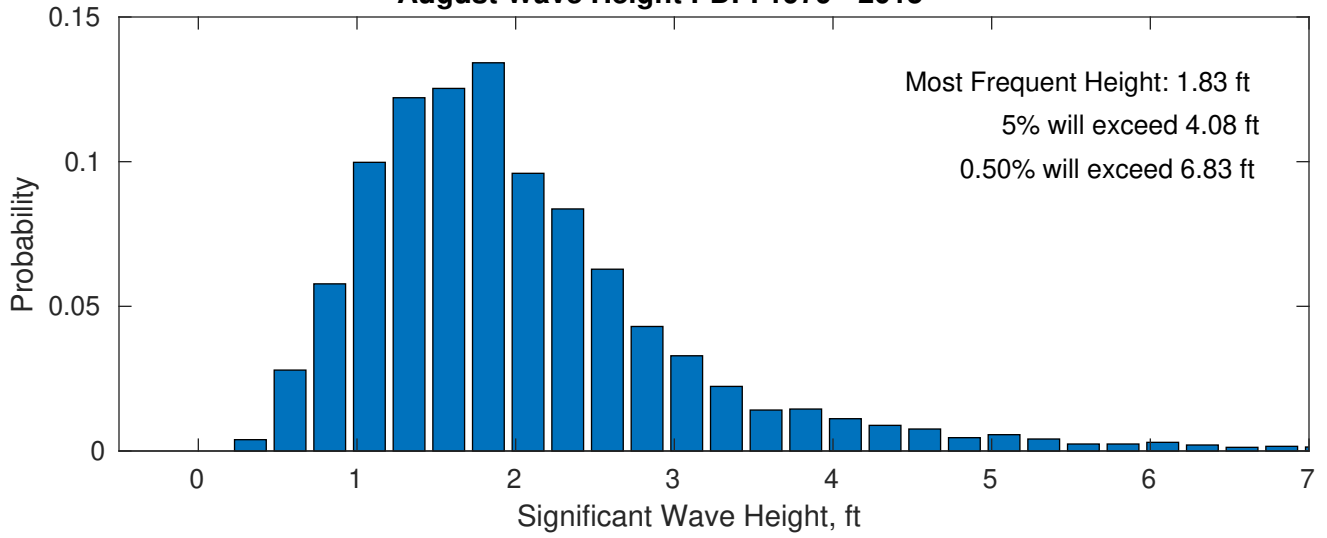
**Wave Height Weather Days Probability Distribution Function**



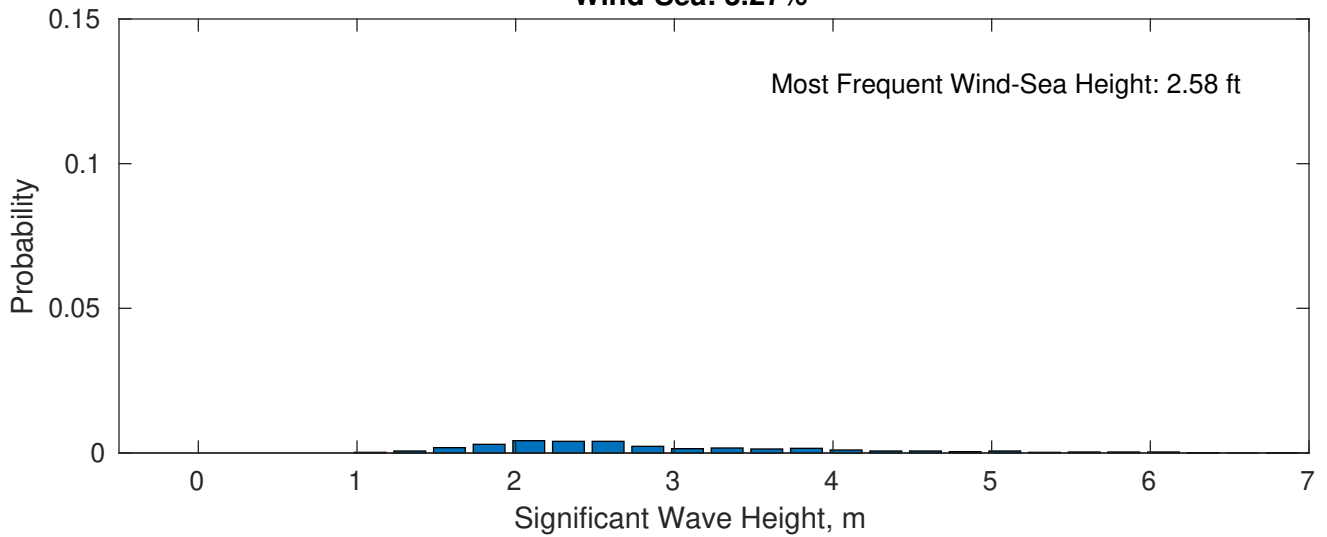
VNE 544 ECR2 Asbury Park NJ Shore Landing August



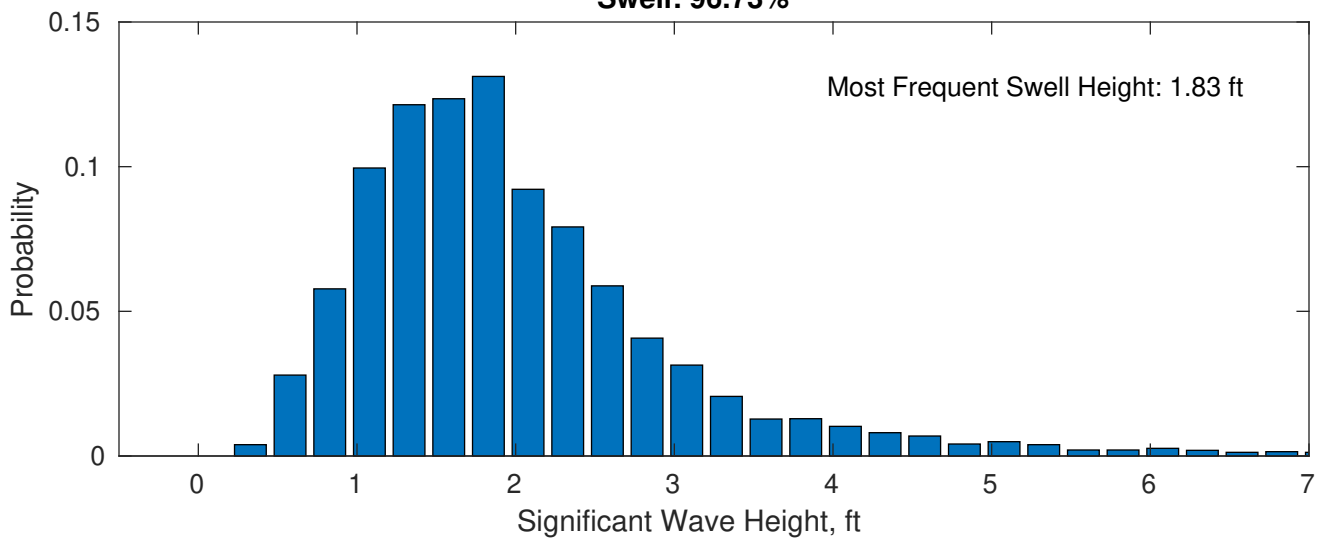
**August Wave Height PDF: 1979 - 2015**



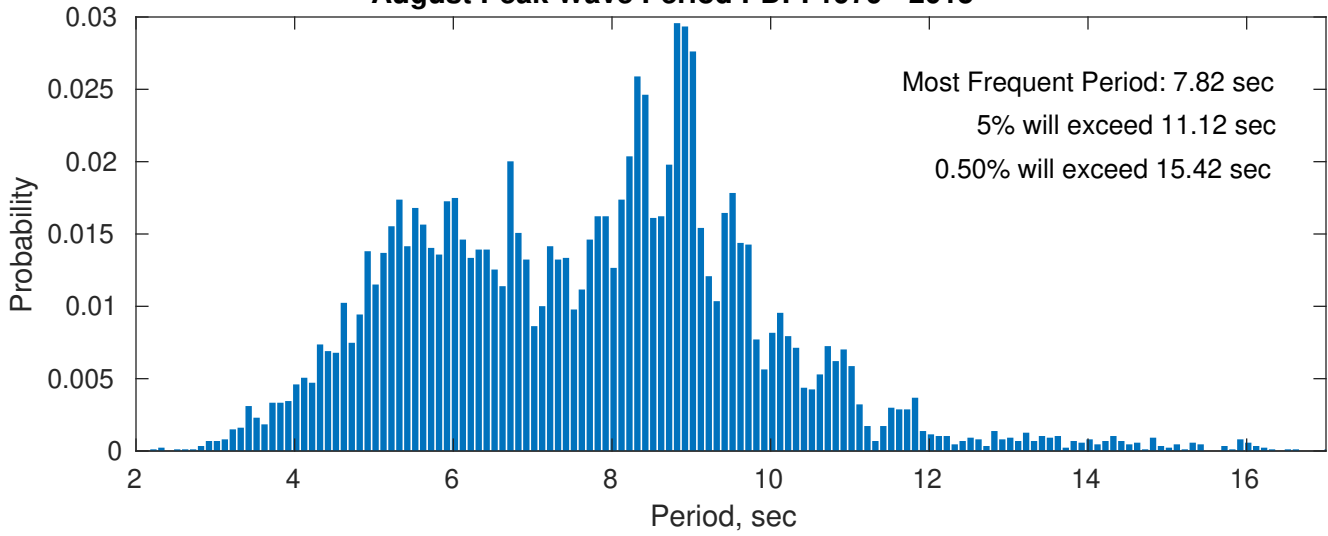
**Wind-Sea: 3.27%**



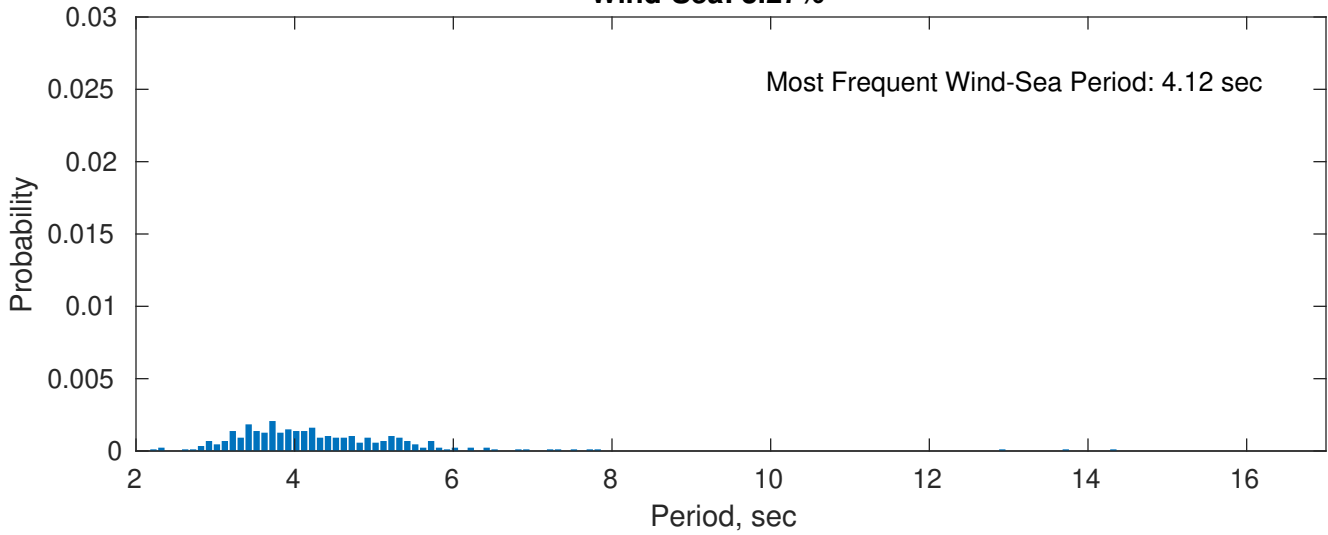
**Swell: 96.73%**



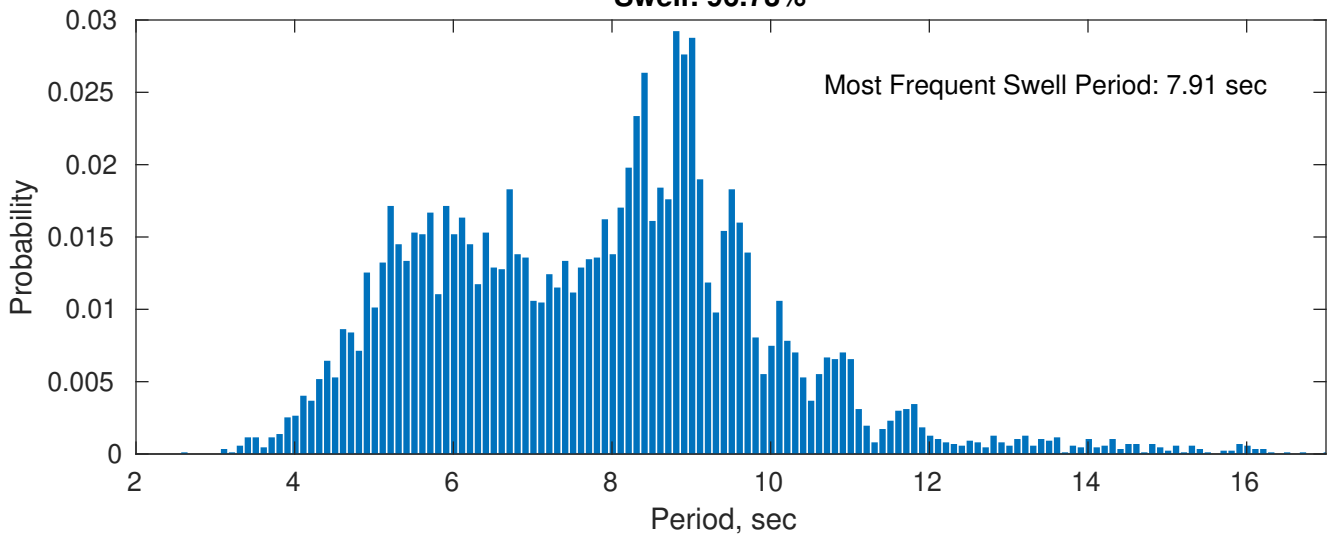
**August Peak Wave Period PDF: 1979 - 2015**



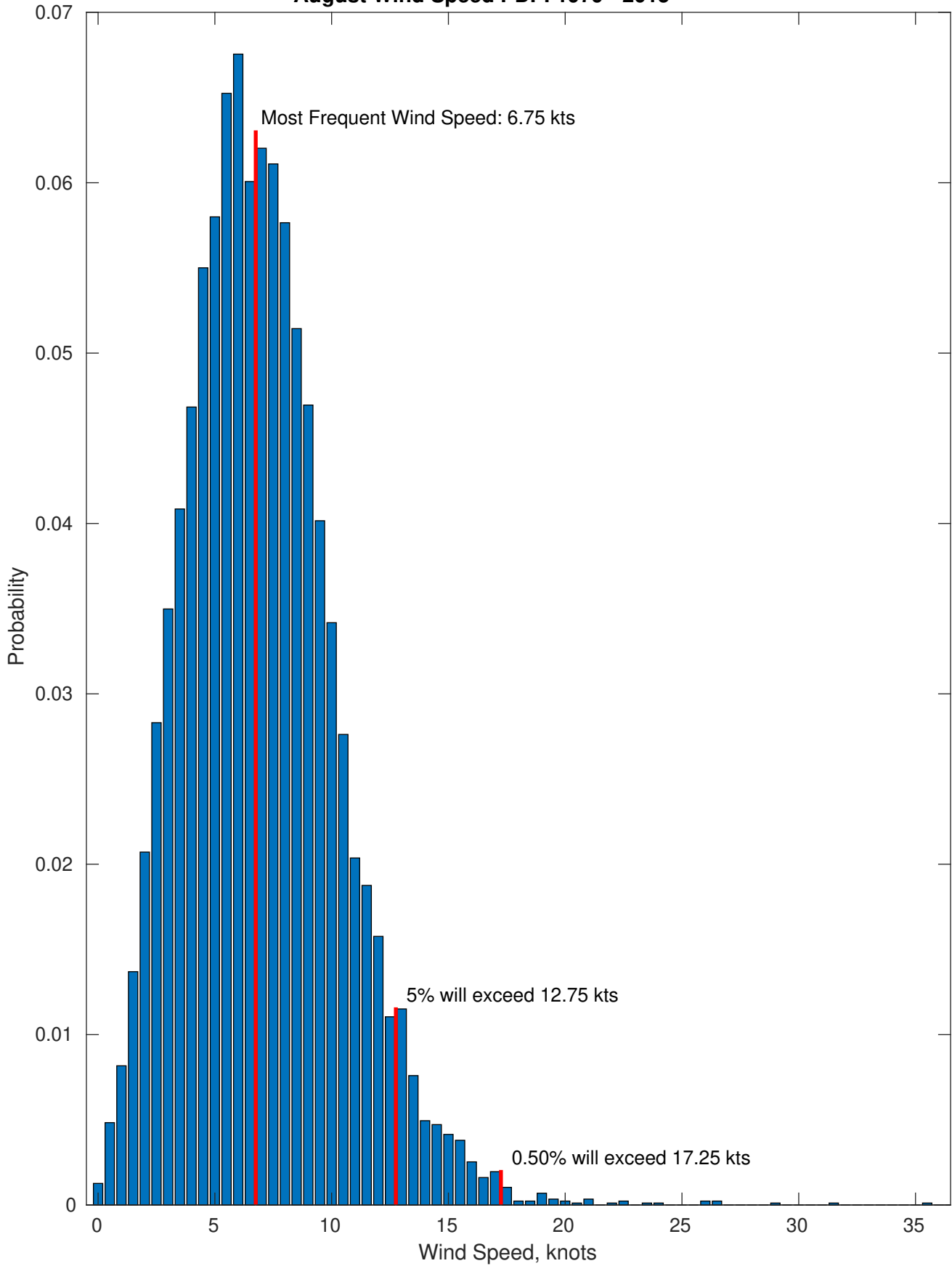
**Wind-Sea: 3.27%**



**Swell: 96.73%**



### August Wind Speed PDF: 1979 - 2015

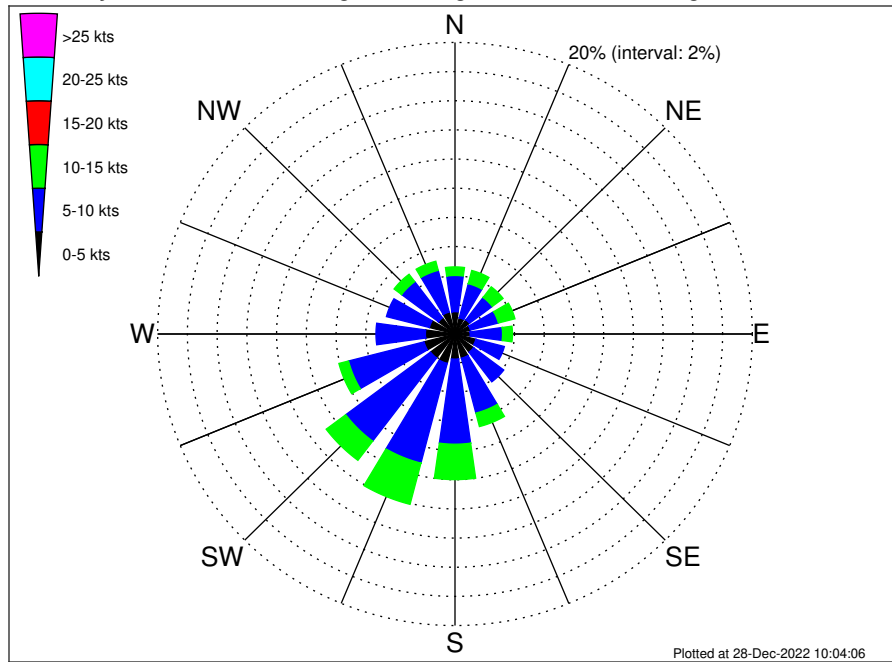








VNE 544 ECR2 Asbury Park NJ Shore Landing Climatological Wind Rose for August: 1979 - 2015



Joint Frequency Distribution Table

	N	NNE	NE	ENE	E	ESE	SE	SSE	S	SSW	SW	WSW	W	WNW	NW	NNW	Total
calm	0.07	0.03	0.07	0.03	•	0.01	0.06	0.01	0.03	0.06	0.03	0.06	0.05	0.02	0.02	0.05	0.61
0 - 5 kts	1.46	1.12	1.15	1.04	1.02	1.44	1.51	1.70	1.69	2.03	2.03	2.09	1.94	1.76	1.37	1.51	24.86
5 - 10 kts	2.49	2.42	1.92	1.94	2.17	1.98	2.54	3.89	5.83	7.07	7.15	5.25	3.33	2.98	3.11	2.96	57.02
10 - 15 kts	0.59	0.93	0.91	1.15	0.67	0.40	0.33	0.96	2.43	2.92	1.65	0.67	0.40	0.37	0.63	0.64	15.65
15 - 20 kts	0.07	0.20	0.28	0.30	0.08	•	0.08	0.09	0.21	0.18	0.06	0.03	•	0.02	0.03	0.02	1.66
20 - 25 kts	0.01	0.01	0.02	0.02	0.01	•	0.02	•	0.01	0.01	•	•	•	•	•	•	0.13
25 - 30 kts	•	0.02	•	•	•	0.01	•	•	•	•	•	0.01	•	•	•	0.01	0.06
30 - 35 kts	•	•	•	•	•	•	•	•	•	•	•	•	0.01	•	•	•	0.01
35 - 40 kts	•	•	•	•	0.01	•	•	•	•	•	•	•	•	•	•	•	0.01
40 - 45 kts	•	•	•	•	•	•	•	•	•	•	•	•	•	•	•	•	•
45 - 50 kts	•	•	•	•	•	•	•	•	•	•	•	•	•	•	•	•	•
Total	4.68	4.73	4.35	4.49	3.97	3.84	4.55	6.65	10.21	12.27	10.91	8.11	5.73	5.16	5.17	5.19	100.00