

VNE 544 ECR2 Asbury Park NJ Shore Landing - March

Latitude: 40.23 N Longitude: 73.97 W

Weather Days

- Wave Height > 4.0 ft Mean: 4.7 days Range: 2.2 - 7.2 days p50:5 days p75:3 days p90:2 days
- Wave Height > 5.0 ft Mean: 2.6 days Range: 0.6 - 4.6 days p50:3 days p75:1.5 days p90:0.5 days
- Wave Height > 6.0 ft Mean: 1.5 days Range: 0.2 - 2.8 days p50:1.5 days p75:0.5 days p90:0.5 days

- Wind Speed > 20.0 knots Mean: 1.1 days Range: 0.4 - 1.8 days p50:1.5 days p75:1 days p90:0.5 days
- Wind Speed > 25.0 knots Mean: 0.2 days Range: 0.0 - 0.5 days p50:0.5 days p75:0.5 days p90:0.5 days
- Wind Speed > 30.0 knots Mean: 0.1 days Range: 0.0 - 0.2 days p50:0.5 days p75:0.5 days p90:0.5 days

Working Window Probability

Wave Height < 4.0 ft	3 days or longer: 68%
	5 days or longer: 35%
	7 days or longer: 19%
Wave Height < 5.0 ft	3 days or longer: 74%
	5 days or longer: 52%
	7 days or longer: 36%
Wave Height < 6.0 ft	3 days or longer: 74%
	5 days or longer: 59%
	7 days or longer: 43%

Waves

- Mean Height: 2 - 4 ft
- The wave heights will occasionally reach 8 - 10 ft, but rarely higher.
- Mean Period: 6 - 8 sec
- The wave periods will occasionally reach 12 - 14 sec, but rarely longer.
- Principle Direction, from: E
- WindSea/Swell: 16% / 84%

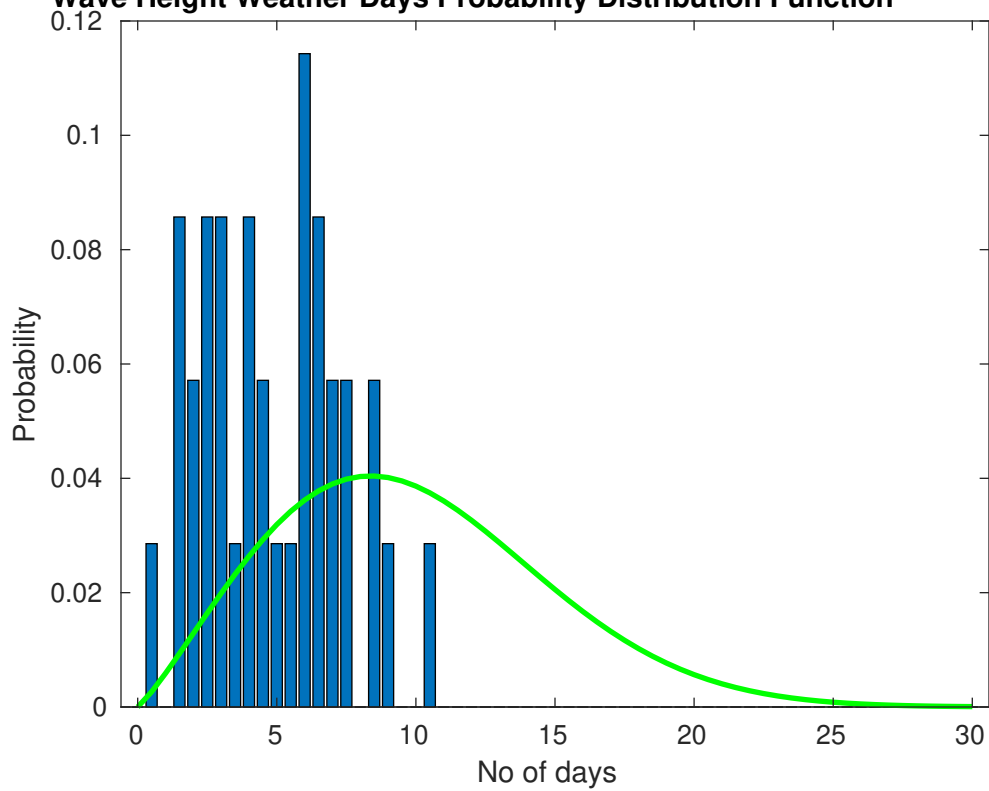
Winds

- Mean Speed: 10 - 15 kts
- The winds will occasionally reach 20 - 25 kts, but rarely greater.
- Principle Direction, from: NW

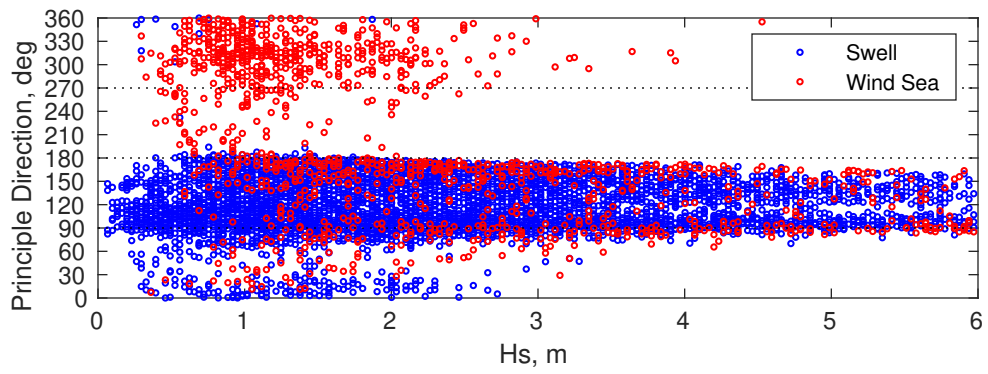
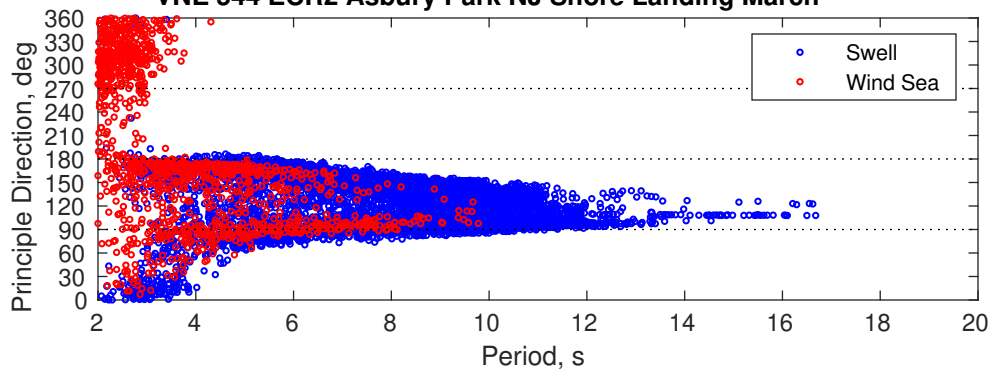
Severe Storms

Severe storms with gale force winds and extreme waves are not expected during this month.

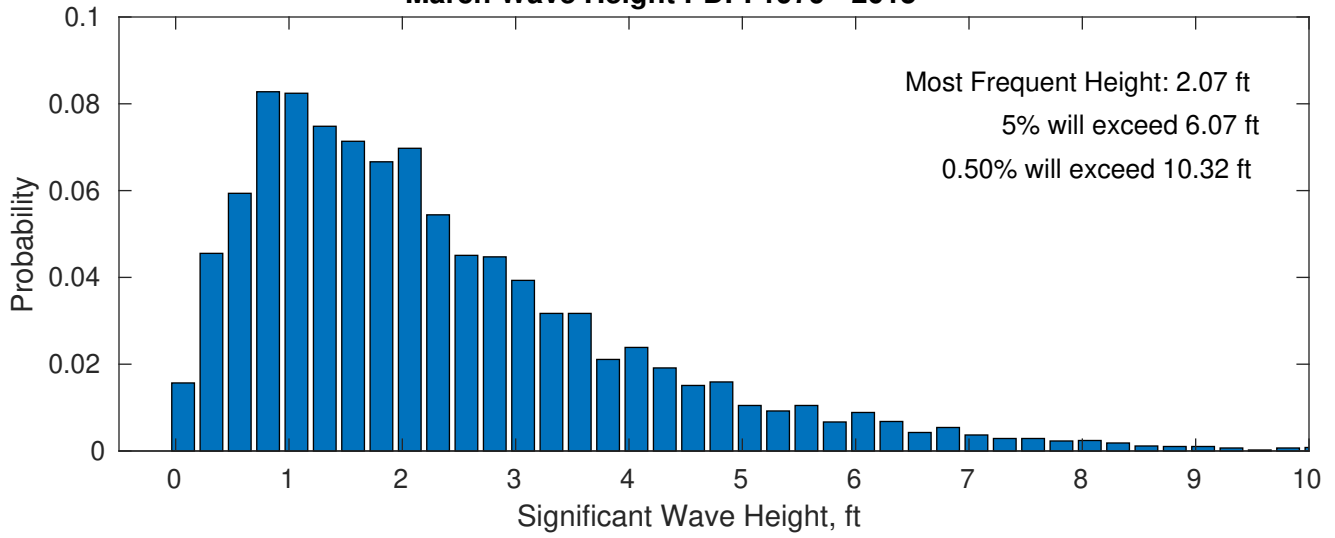
Wave Height Weather Days Probability Distribution Function



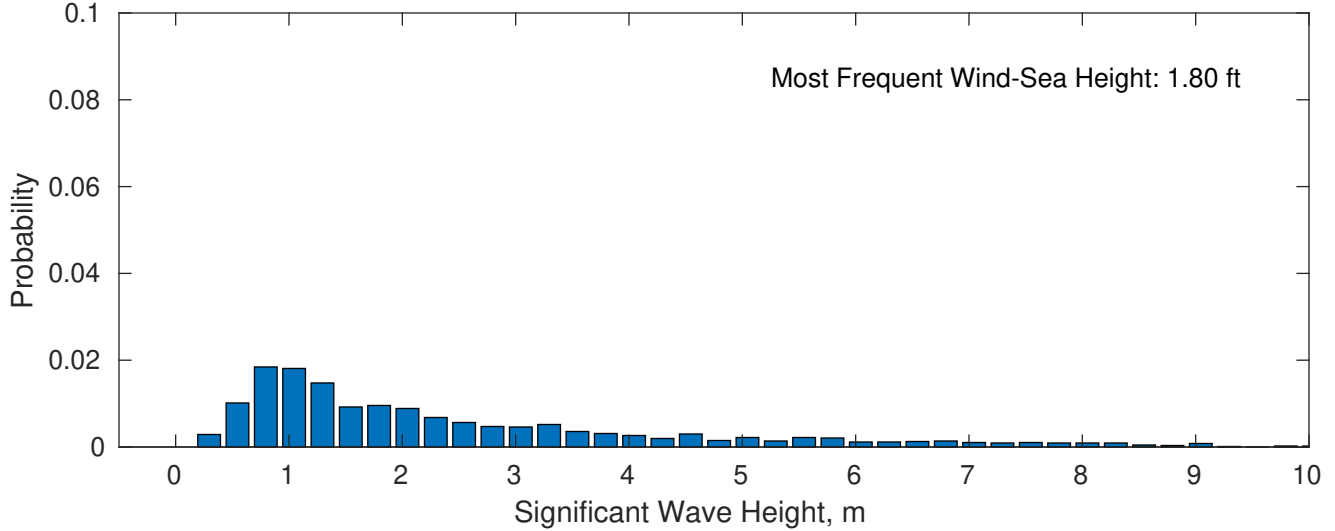
VNE 544 ECR2 Asbury Park NJ Shore Landing March



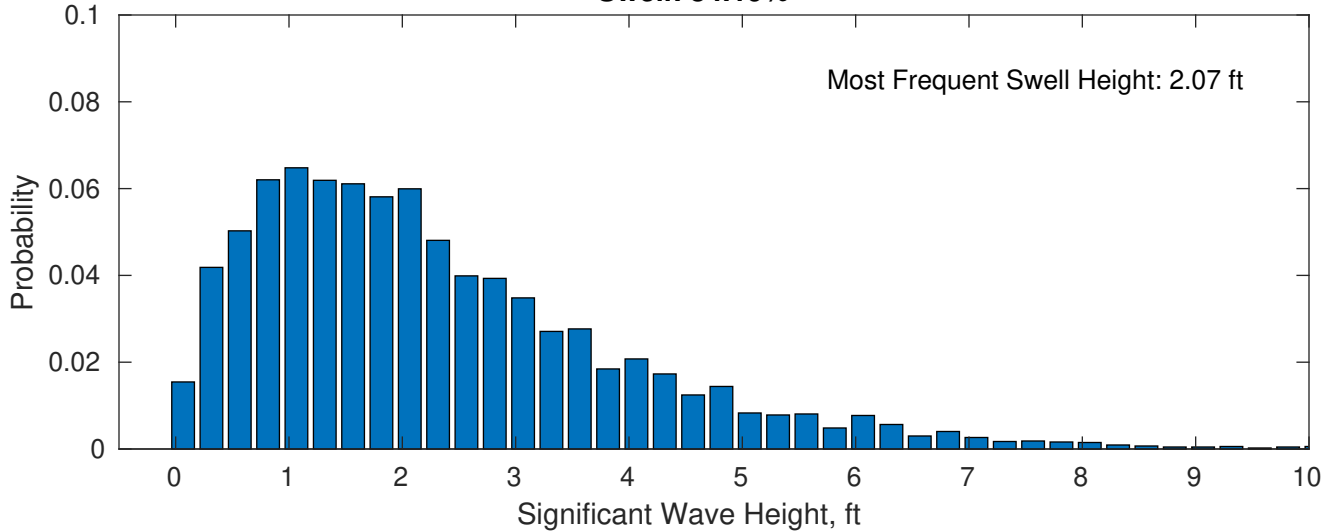
March Wave Height PDF: 1979 - 2015



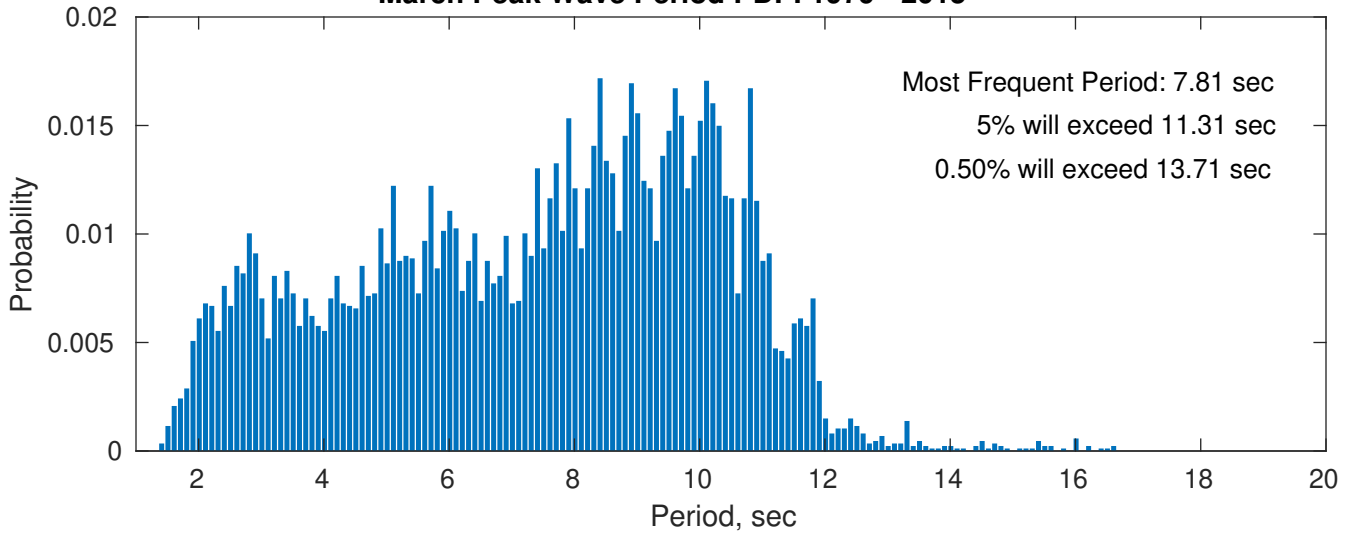
Wind-Sea: 15.81%



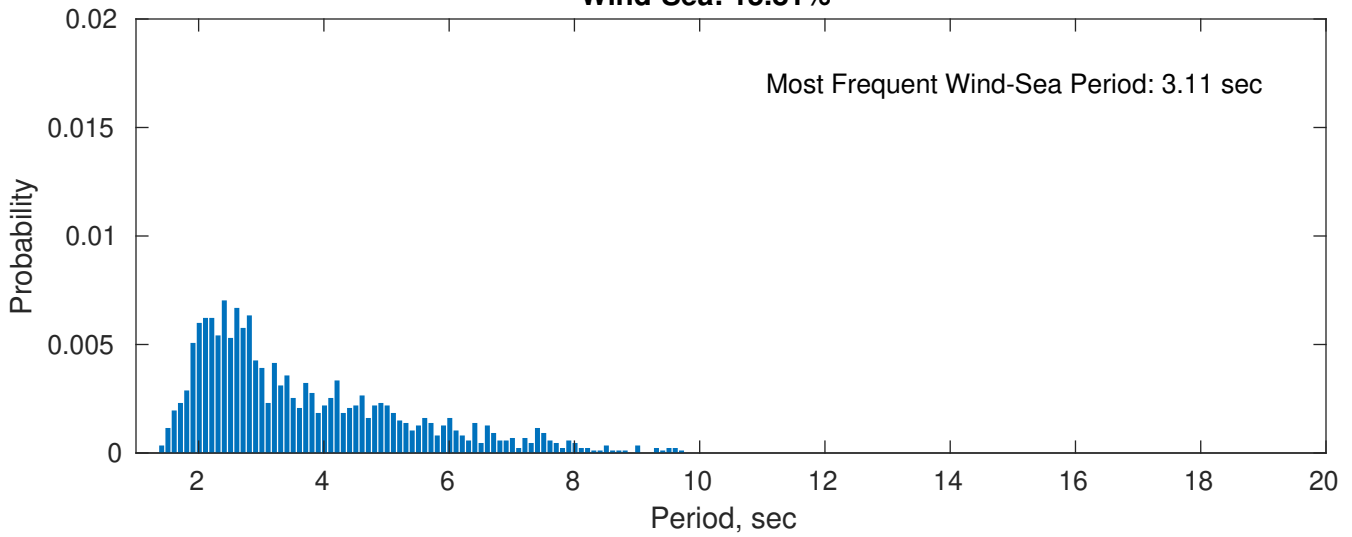
Swell: 84.19%



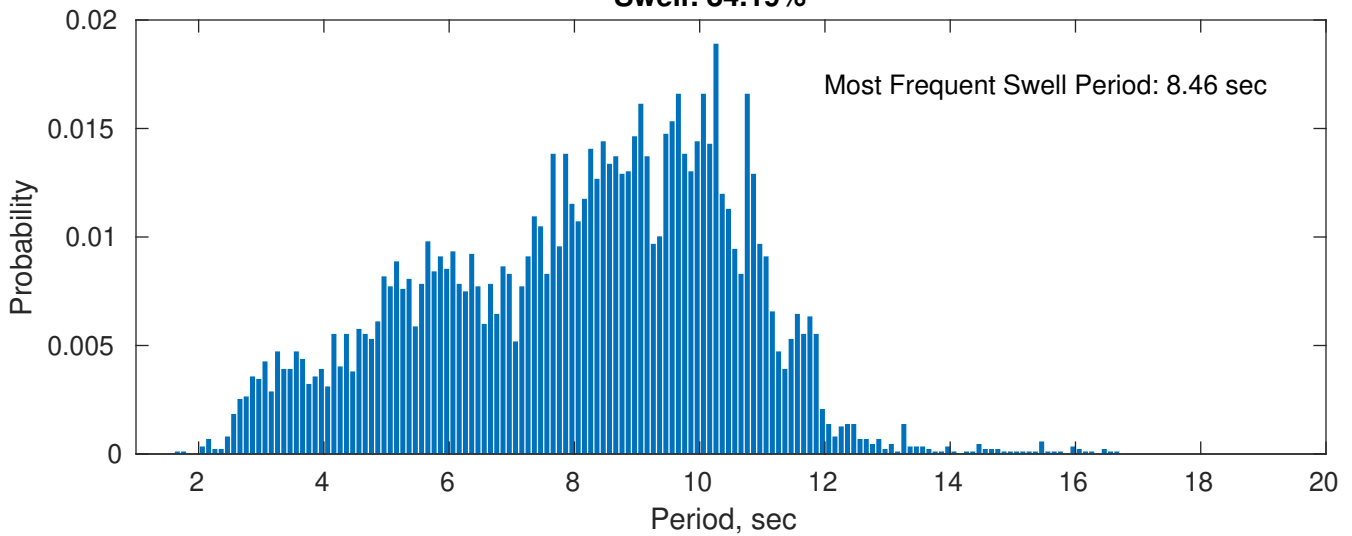
March Peak Wave Period PDF: 1979 - 2015



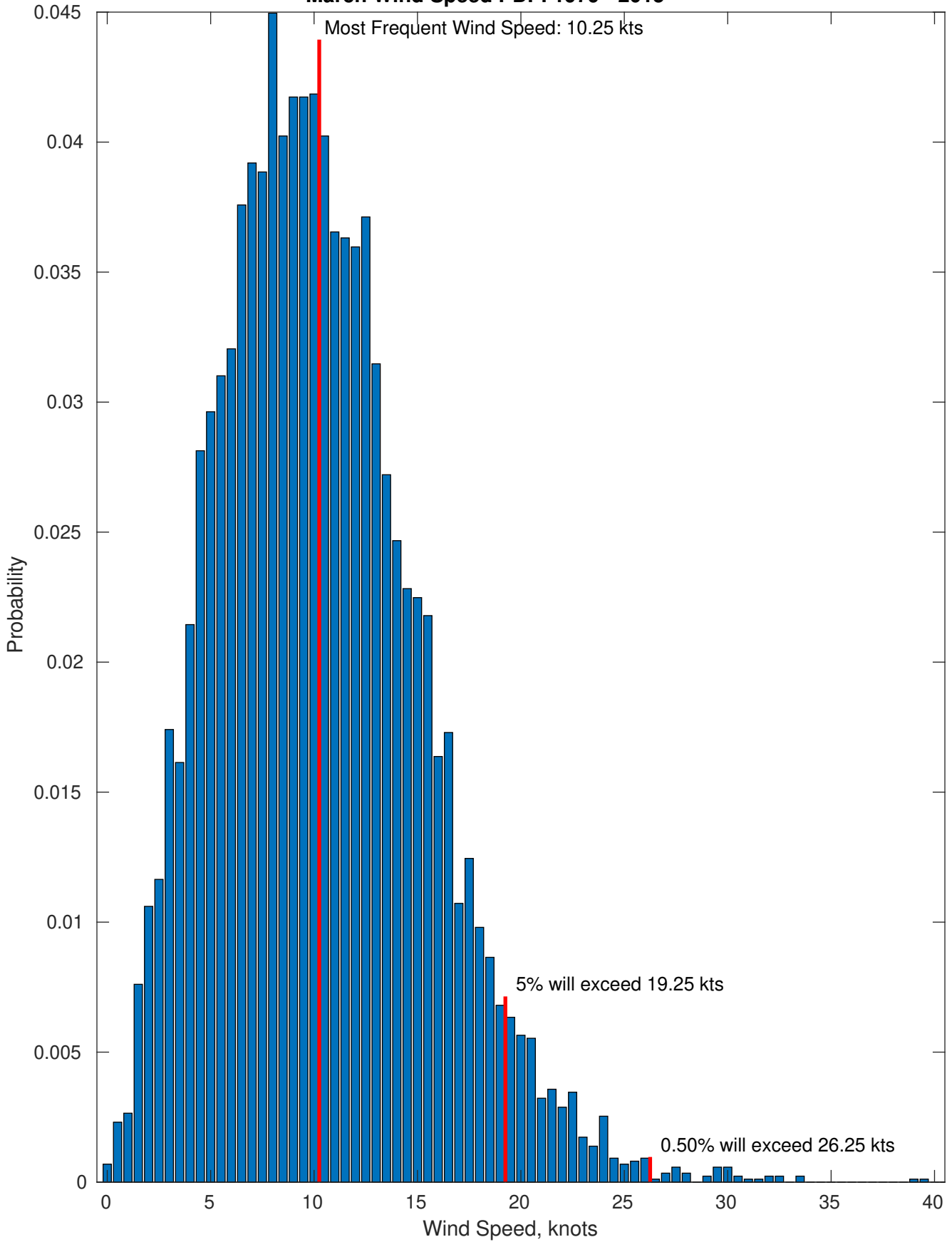
Wind-Sea: 15.81%



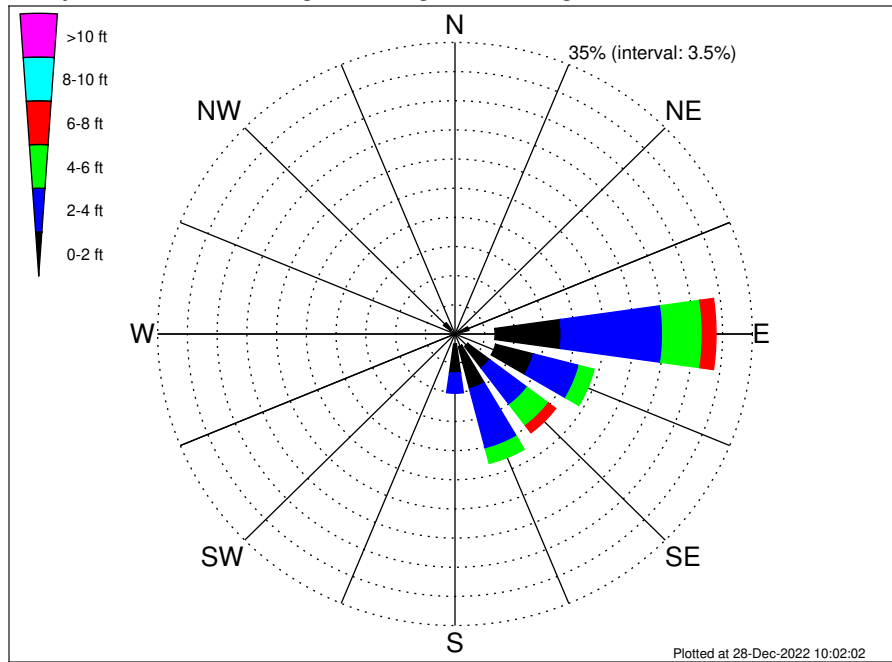
Swell: 84.19%



March Wind Speed PDF: 1979 - 2015



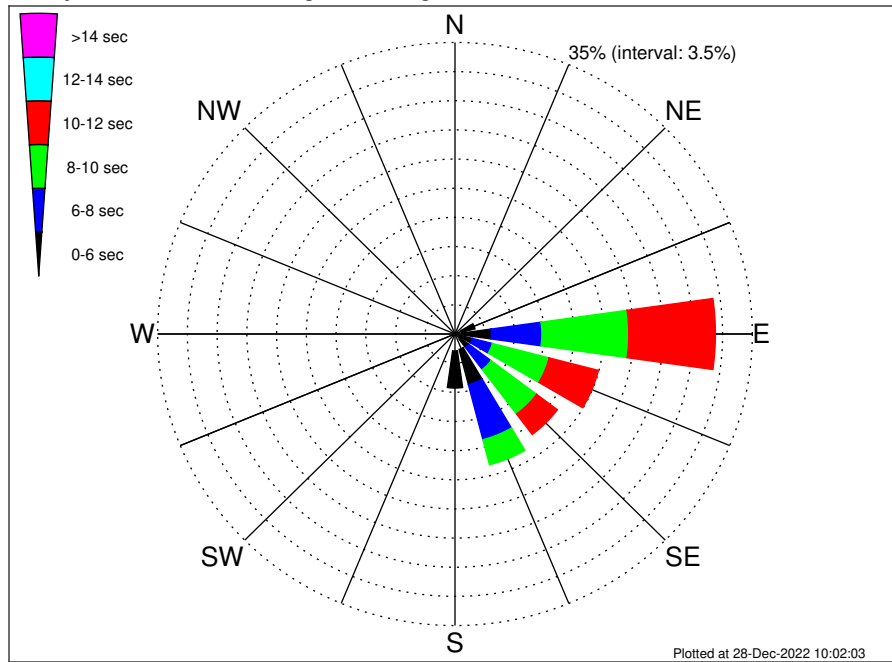
VNE 544 ECR2 Asbury Park NJ Shore Landing Climatological WaveHeight Rose for March: 1979 - 2015



Joint Frequency Distribution Table

	N	NNE	NE	ENE	E	ESE	SE	SSE	S	SSW	SW	WSW	W	WNW	NW	NNW	Total
calm	0.66	0.28	0.21	0.52	4.72	4.93	1.87	1.56	1.20	0.17	0.10	0.09	0.20	0.43	0.66	0.51	18.09
1 - 2 ft	0.66	0.67	0.24	1.19	7.78	4.61	3.25	5.25	3.49	0.07	0.06	0.14	0.31	0.60	1.05	0.48	29.85
2 - 4 ft	0.17	0.24	0.17	0.85	11.96	5.56	5.52	7.45	2.42	•	0.01	0.03	0.14	0.16	0.27	0.13	35.08
4 - 6 ft	0.01	•	•	0.09	4.66	1.81	3.12	1.80	0.08	•	•	•	•	•	•	•	11.57
6 - 8 ft	•	•	•	•	1.61	0.84	1.08	0.22	•	•	•	•	•	•	•	•	3.76
8 - 10 ft	•	•	•	•	0.40	0.29	0.29	0.01	•	•	•	•	•	•	•	•	0.99
10 - 12 ft	•	•	•	•	0.13	0.17	0.13	•	•	•	•	•	•	•	•	•	0.43
12 - 14 ft	•	•	•	•	0.07	0.09	0.05	•	•	•	•	•	•	•	•	•	0.21
14 - 16 ft	•	•	•	•	0.02	•	•	•	•	•	•	•	•	•	•	•	0.02
16 - 18 ft	•	•	•	•	•	•	•	•	•	•	•	•	•	•	•	•	•
> 18 ft	•	•	•	•	•	•	•	•	•	•	•	•	•	•	•	•	•
Total	1.50	1.19	0.62	2.65	31.35	18.31	15.31	16.28	7.19	0.24	0.17	0.27	0.65	1.19	1.97	1.12	100.00

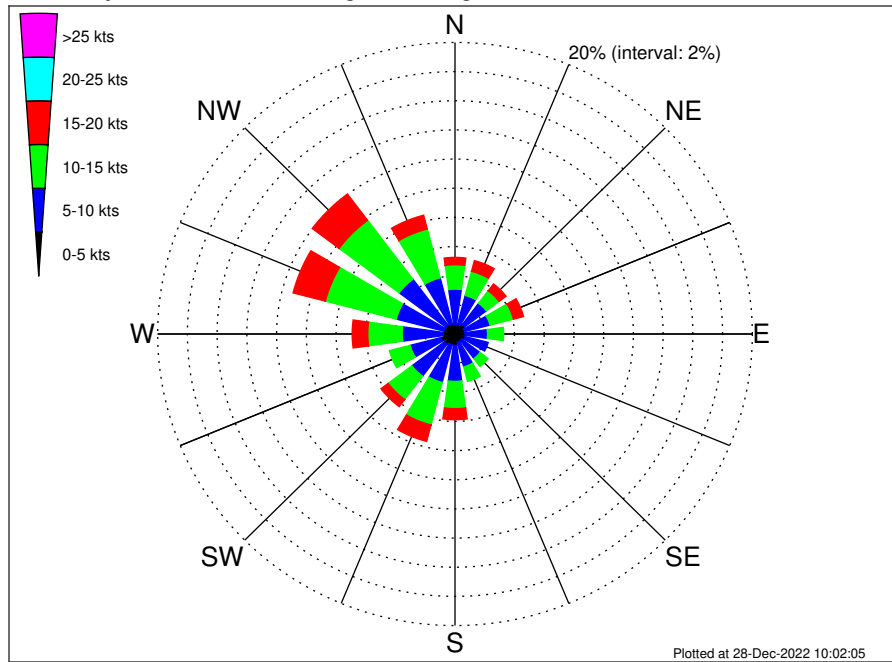
VNE 544 ECR2 Asbury Park NJ Shore Landing Climatological WavePeriod Rose for March: 1979 - 2015



Joint Frequency Distribution Table

	N	NNE	NE	ENE	E	ESE	SE	SSE	S	SSW	SW	WSW	W	WNW	NW	NNW	Total
calm	•	•	•	•	•	•	•	•	•	•	•	•	•	•	•	•	•
1 - 2 sec	0.03	0.01	•	0.01	0.01	0.02	0.03	0.07	0.02	0.09	0.06	0.08	0.16	0.22	0.39	0.13	1.35
2 - 4 sec	1.45	1.15	0.54	0.78	0.83	0.47	0.73	1.83	2.02	0.15	0.12	0.18	0.48	0.97	1.58	0.99	14.28
4 - 6 sec	0.01	0.02	0.08	1.64	3.44	1.63	1.26	4.37	4.45	•	•	•	•	•	•	•	16.89
6 - 8 sec	•	•	•	0.20	5.95	2.42	3.31	6.82	0.70	•	•	•	•	•	•	•	19.40
8 - 10 sec	•	•	•	0.02	10.23	6.91	6.71	3.11	•	•	•	•	•	•	•	•	26.98
10 - 12 sec	•	•	•	•	10.20	5.99	3.07	0.07	•	•	•	•	•	•	•	•	19.33
12 - 14 sec	•	•	•	•	0.67	0.46	0.17	•	•	•	•	•	•	•	•	•	1.30
14 - 16 sec	•	•	•	•	0.02	0.28	0.03	•	•	•	•	•	•	•	•	•	0.33
18 - 20 sec	•	•	•	•	•	0.13	•	•	•	•	•	•	•	•	•	•	0.13
22 - 24 sec	•	•	•	•	•	•	•	•	•	•	•	•	•	•	•	•	•
Total	1.50	1.19	0.62	2.65	31.35	18.31	15.31	16.28	7.19	0.24	0.17	0.27	0.65	1.19	1.97	1.12	100.00

VNE 544 ECR2 Asbury Park NJ Shore Landing Climatological Wind Rose for March: 1979 - 2015



Joint Frequency Distribution Table

	N	NNE	NE	ENE	E	ESE	SE	SSE	S	SSW	SW	WSW	W	WNW	NW	NNW	Total
calm	0.01	0.01	0.01	0.05	•	0.02	•	0.01	0.05	•	0.03	0.01	0.01	0.02	0.02	0.03	0.30
0 - 5 kts	0.62	0.67	0.80	0.62	0.68	0.69	0.59	0.60	0.75	0.76	0.84	0.98	0.77	0.76	0.75	0.68	11.56
5 - 10 kts	2.44	2.05	1.83	1.76	1.51	1.59	1.52	1.72	2.46	2.67	2.76	2.12	2.77	3.30	3.93	3.26	37.70
10 - 15 kts	1.67	1.71	1.07	1.63	1.08	0.48	0.68	1.03	1.87	3.01	1.99	1.44	2.32	4.92	5.06	3.46	33.42
15 - 20 kts	0.51	0.76	0.59	0.70	0.47	0.23	0.23	0.29	0.76	1.16	0.61	0.42	1.05	2.25	2.26	0.98	13.27
20 - 25 kts	0.16	0.28	0.23	0.35	0.13	0.10	0.10	0.10	0.22	0.18	0.07	0.03	0.32	0.35	0.30	0.16	3.09
25 - 30 kts	•	•	0.02	0.13	0.06	•	0.03	0.02	0.01	0.05	0.01	0.01	0.05	0.02	0.05	•	0.46
30 - 35 kts	•	0.01	•	0.08	0.06	•	•	•	•	•	•	•	•	•	0.01	0.01	0.17
35 - 40 kts	•	•	•	0.02	•	•	•	•	•	•	•	•	•	•	•	•	0.02
40 - 45 kts	•	•	•	•	•	•	•	•	•	•	•	•	•	•	•	•	•
45 - 50 kts	•	•	•	•	•	•	•	•	•	•	•	•	•	•	•	•	•
Total	5.42	5.49	4.55	5.34	3.99	3.12	3.16	3.77	6.11	7.84	6.32	5.01	7.29	11.62	12.38	8.59	100.00