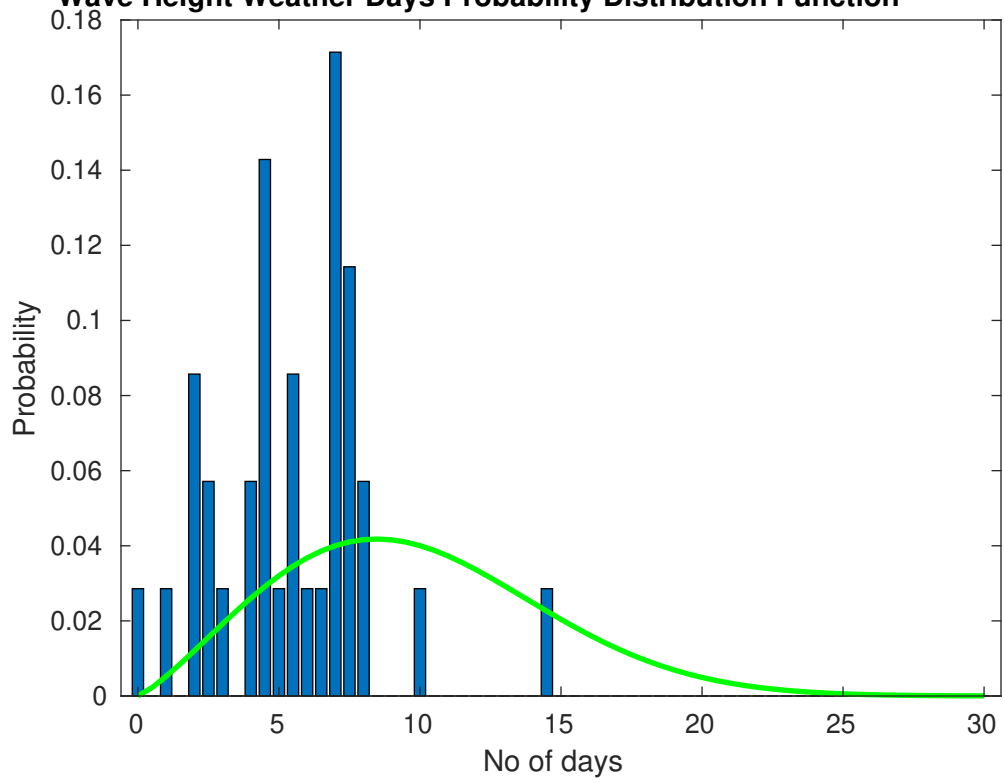
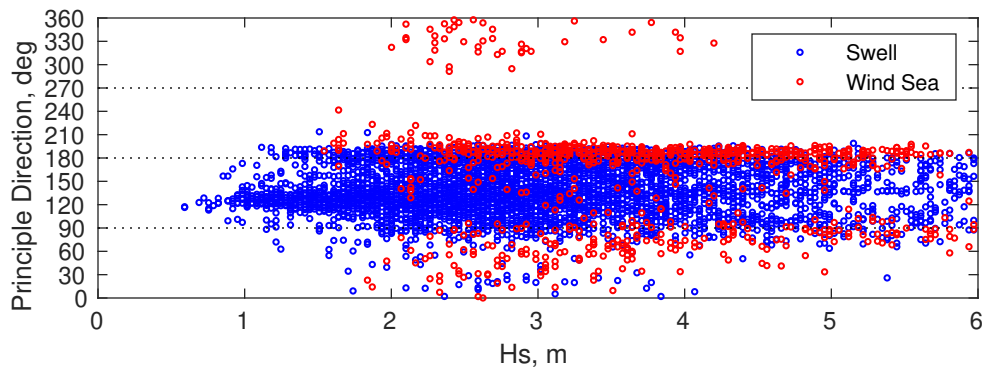
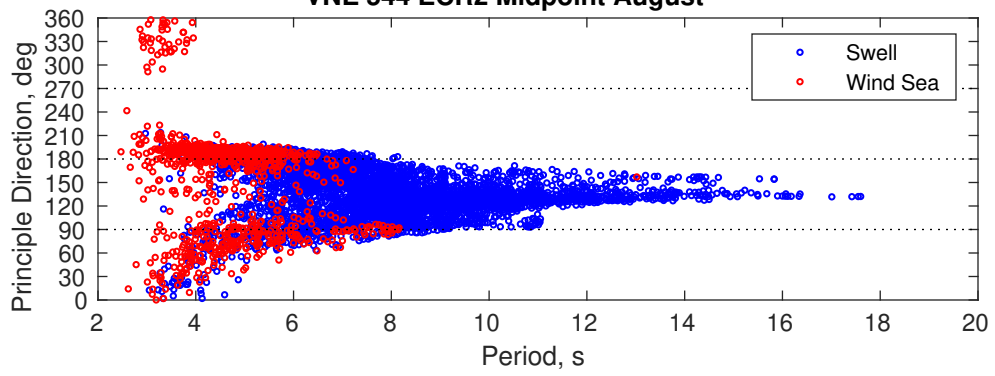


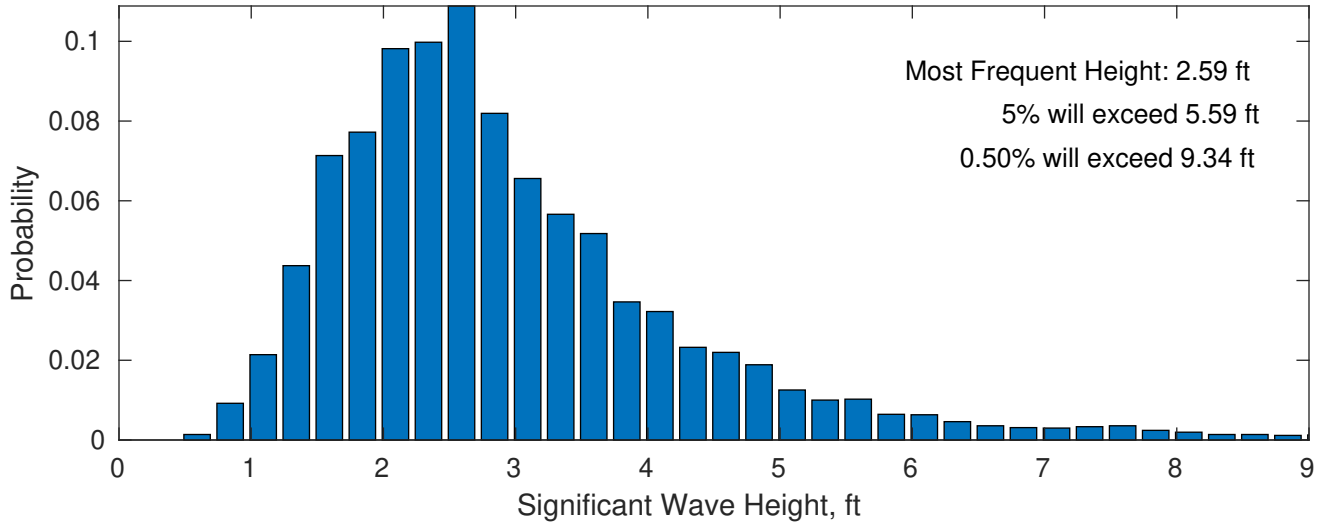
Wave Height Weather Days Probability Distribution Function



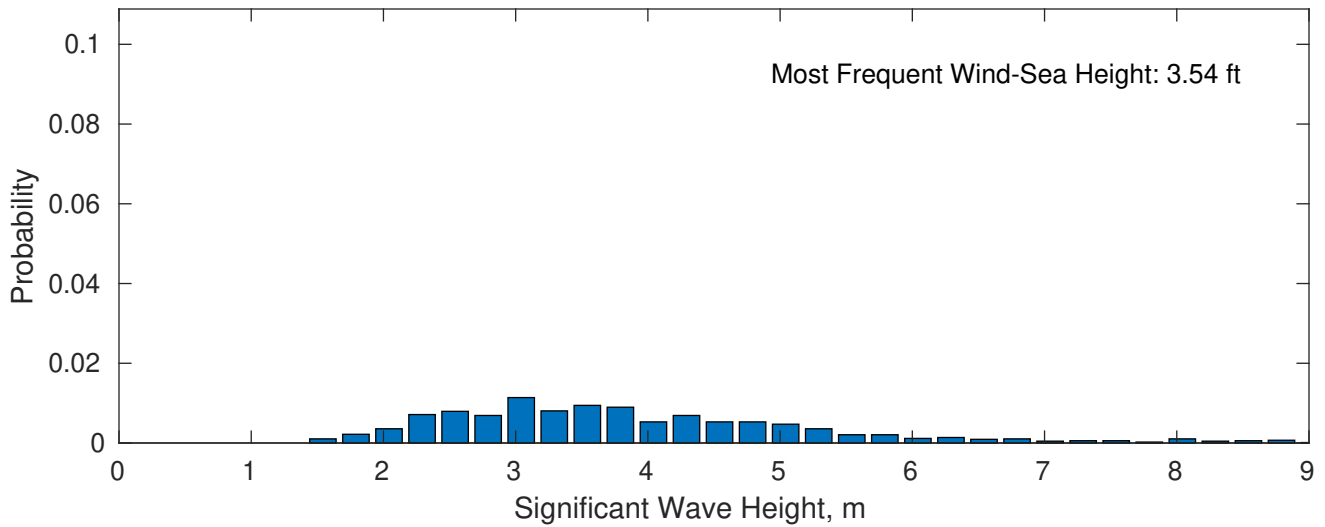
VNE 544 ECR2 Midpoint August



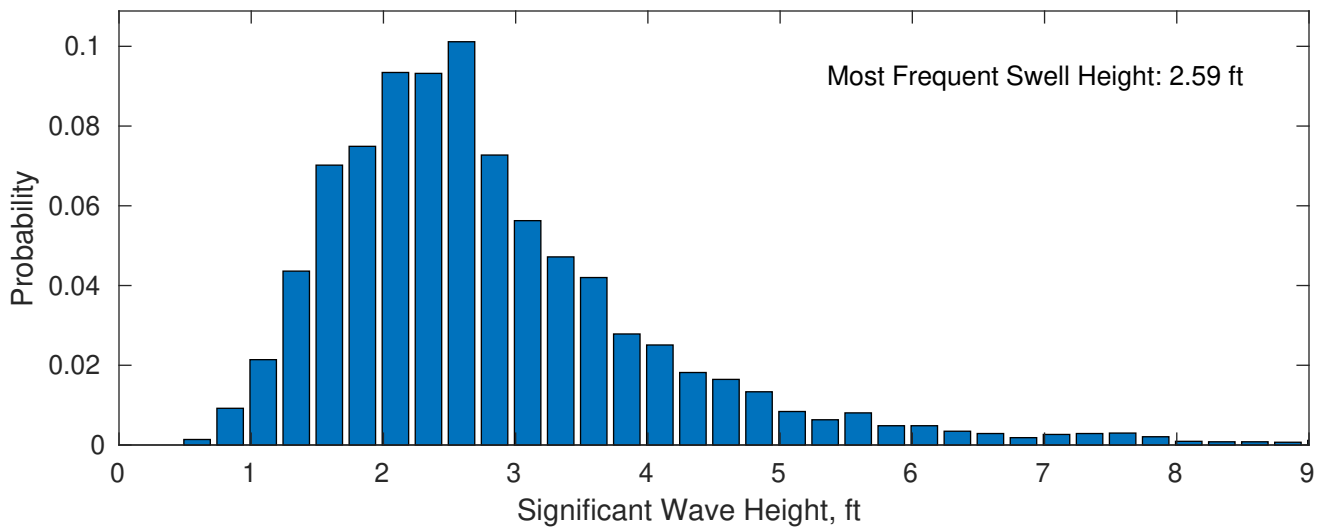
August Wave Height PDF: 1979 - 2015



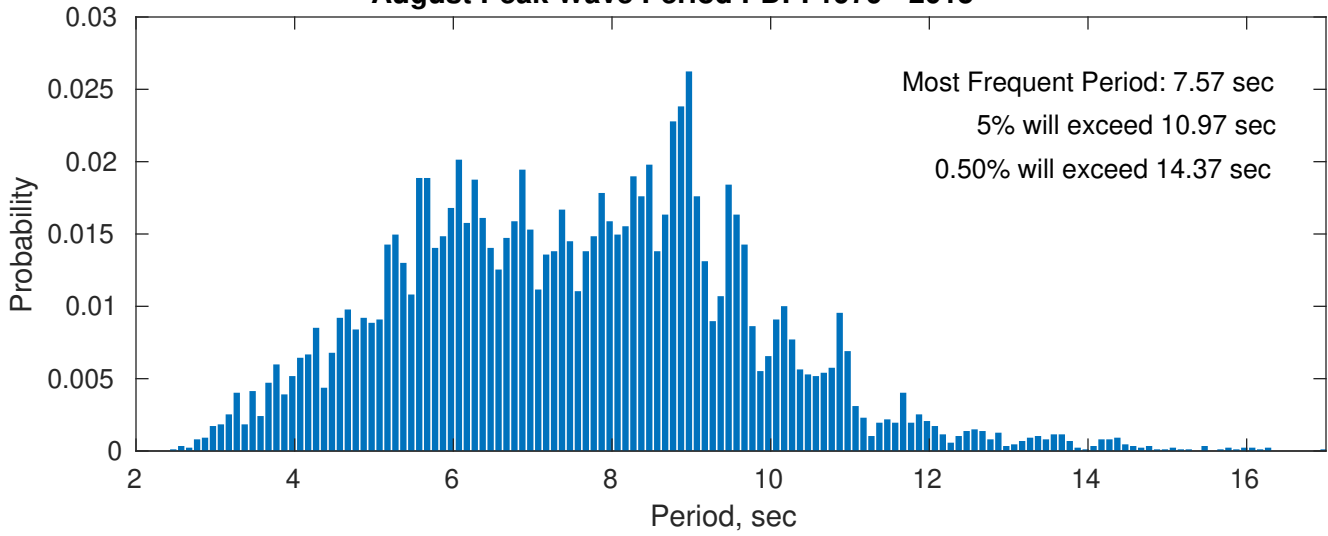
Wind-Sea: 11.37%



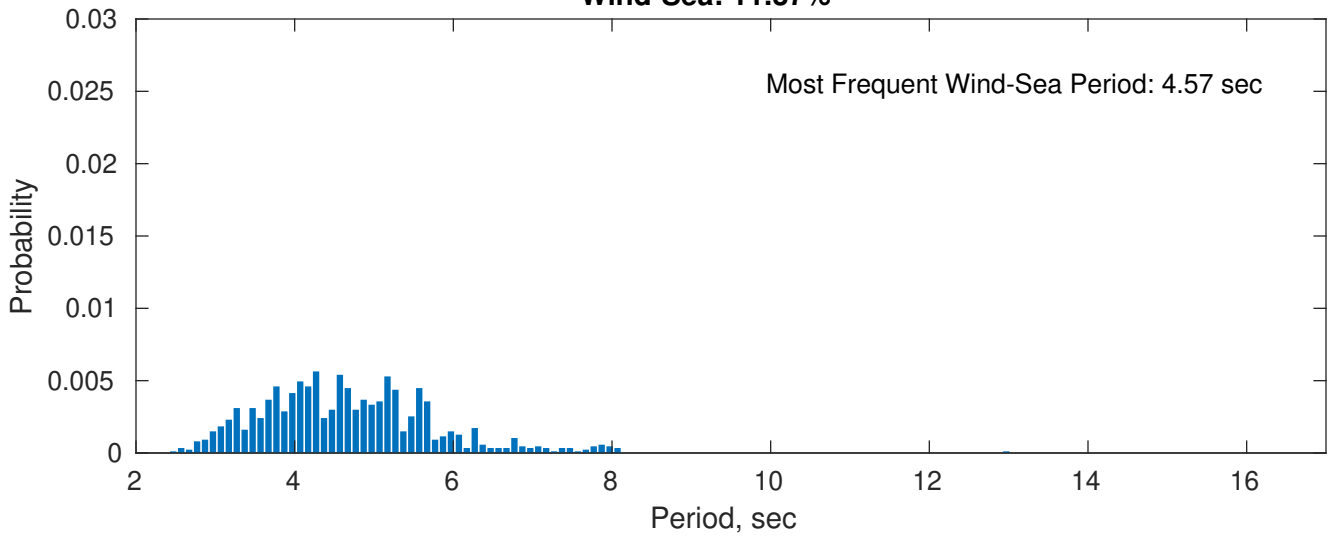
Swell: 88.63%



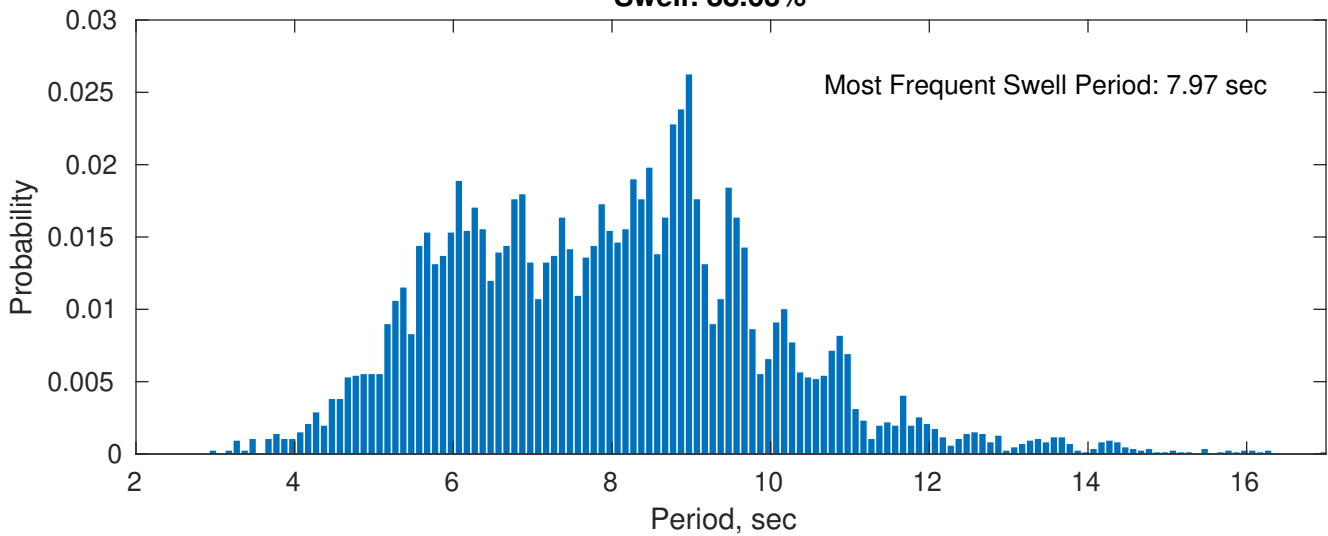
August Peak Wave Period PDF: 1979 - 2015



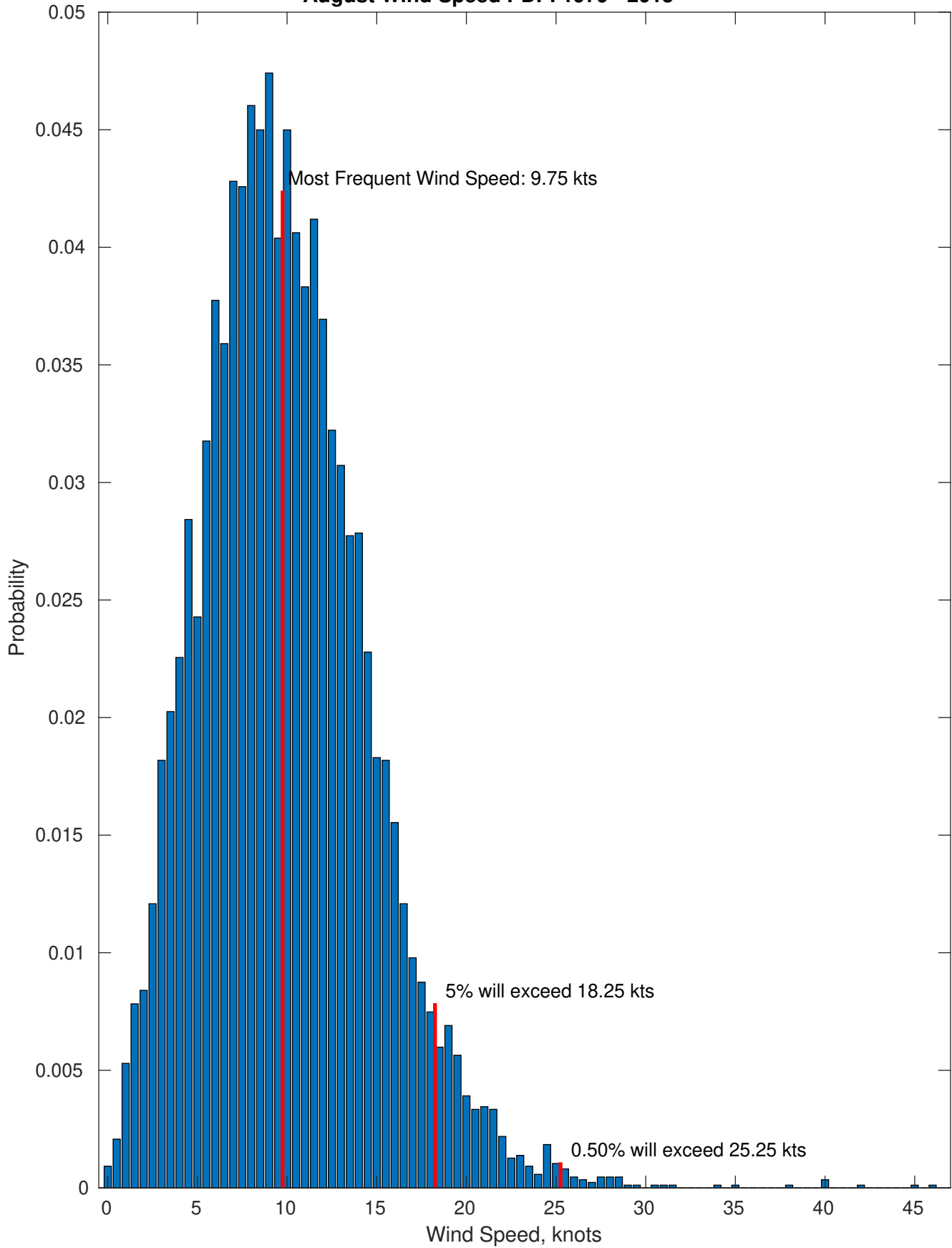
Wind-Sea: 11.37%



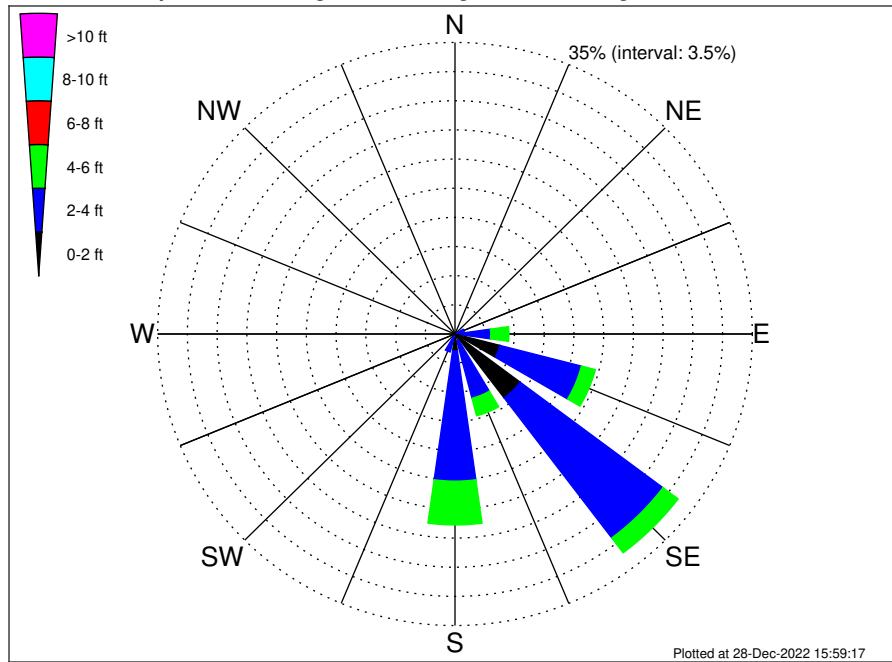
Swell: 88.63%



August Wind Speed PDF: 1979 - 2015



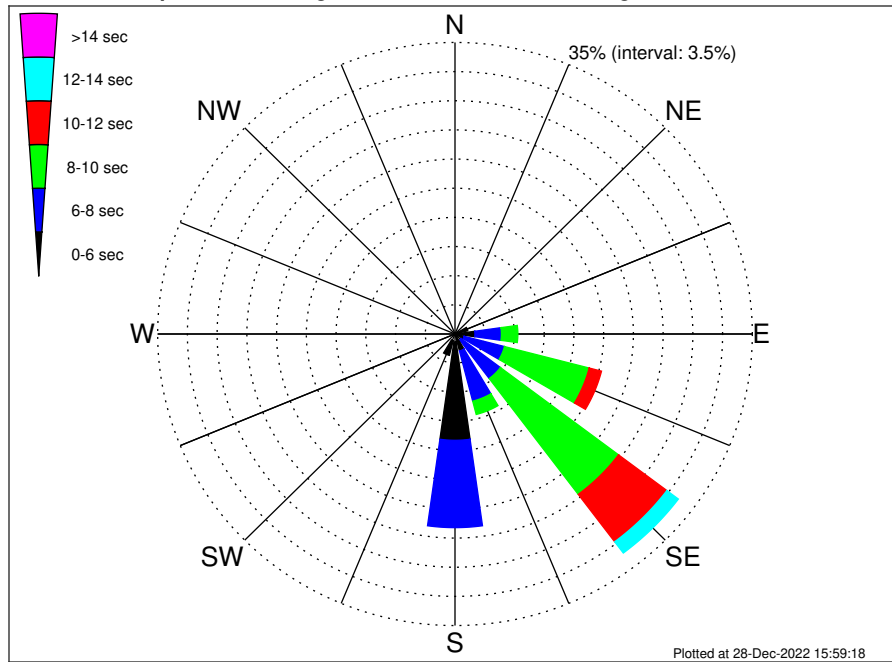
VNE 544 ECR2 Midpoint Climatological WaveHeight Rose for August: 1979 - 2015



Joint Frequency Distribution Table

	N	NNE	NE	ENE	E	ESE	SE	SSE	S	SSW	SW	WSW	W	WNW	NW	NNW	Total
calm	•	•	•	•	0.03	0.31	0.17	0.03	0.01	•	•	•	•	•	•	•	0.56
1 - 2 ft	0.01	0.02	0.06	0.12	0.35	5.17	9.44	0.83	2.01	0.30	0.01	0.01	•	•	•	•	18.32
2 - 4 ft	0.20	0.41	0.47	1.00	3.83	9.90	21.05	7.10	15.64	1.93	0.01	•	•	0.03	0.14	0.20	61.91
4 - 6 ft	0.01	0.02	0.09	0.58	2.14	1.69	2.23	2.17	5.26	0.43	•	•	•	•	•	0.01	14.64
6 - 8 ft	0.01	•	0.02	0.21	0.83	0.61	0.36	0.63	0.49	•	•	•	•	•	•	•	3.16
8 - 10 ft	•	•	•	0.06	0.41	0.14	0.18	0.30	0.05	•	•	•	•	•	•	•	1.14
10 - 12 ft	•	•	•	0.01	0.09	•	0.05	0.03	•	•	•	•	•	•	•	•	0.18
12 - 14 ft	•	•	•	•	•	•	•	0.02	•	•	•	•	•	•	•	•	0.02
14 - 16 ft	•	•	•	•	•	•	•	0.02	•	•	•	•	•	•	•	•	0.02
16 - 18 ft	•	•	•	•	•	•	•	•	•	•	•	•	•	•	•	•	•
> 18 ft	•	•	•	•	•	•	•	0.03	•	•	•	•	•	•	•	•	0.03
Total	0.23	0.46	0.64	1.97	7.69	17.81	33.48	11.19	23.46	2.66	0.02	0.01	•	0.03	0.14	0.21	100.00

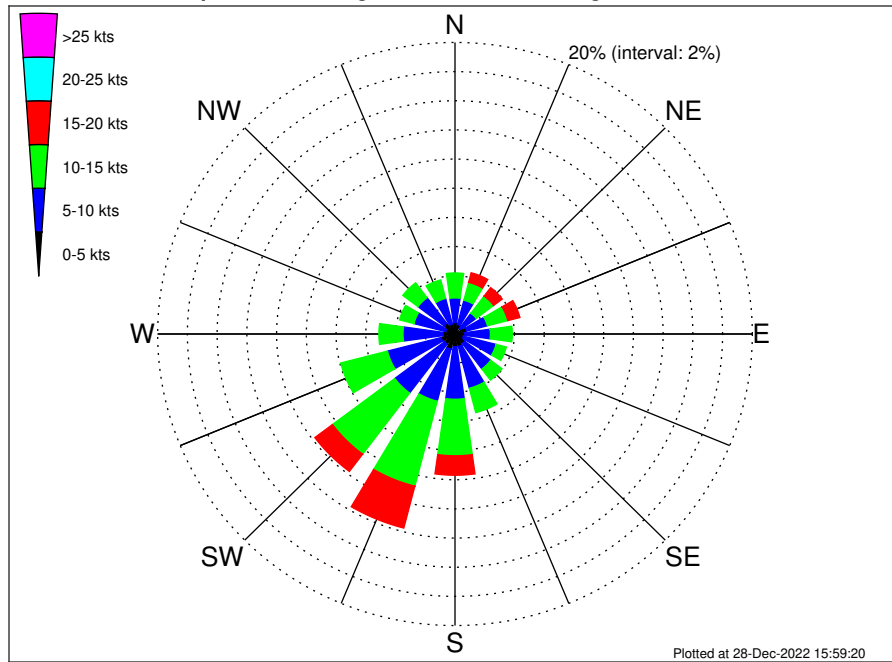
VNE 544 ECR2 Midpoint Climatological WavePeriod Rose for August: 1979 - 2015



Joint Frequency Distribution Table

	N	NNE	NE	ENE	E	ENE	SE	SSE	S	SSW	SW	WSW	W	WNW	NW	NNW	Total
calm	•	•	•	•	•	•	•	•	•	•	•	•	•	•	•	•	•
1 - 2 sec	•	•	•	•	•	•	•	•	•	•	•	•	•	•	•	•	•
2 - 4 sec	0.20	0.36	0.36	0.28	0.14	0.03	0.13	0.10	0.96	0.82	0.02	0.01	•	0.03	0.14	0.21	3.77
4 - 6 sec	0.03	0.10	0.29	1.28	2.21	1.08	0.78	1.99	11.81	1.83	•	•	•	•	•	•	21.40
6 - 8 sec	•	•	•	0.41	3.12	4.90	5.79	6.24	10.48	0.01	•	•	•	•	•	•	30.96
8 - 10 sec	•	•	•	•	1.93	10.30	17.41	1.65	0.21	•	•	•	•	•	•	•	31.50
10 - 12 sec	•	•	•	•	0.29	1.50	7.12	0.74	0.01	•	•	•	•	•	•	•	9.65
12 - 14 sec	•	•	•	•	•	•	1.69	0.28	•	•	•	•	•	•	•	•	1.97
14 - 16 sec	•	•	•	•	•	•	0.39	0.20	•	•	•	•	•	•	•	•	0.59
18 - 20 sec	•	•	•	•	•	•	0.16	•	•	•	•	•	•	•	•	•	0.16
22 - 24 sec	•	•	•	•	•	•	•	•	•	•	•	•	•	•	•	•	•
Total	0.23	0.46	0.64	1.97	7.69	17.81	33.48	11.19	23.46	2.66	0.02	0.01	•	0.03	0.14	0.21	100.00

VNE 544 ECR2 Midpoint Climatological Wind Rose for August: 1979 - 2015



Joint Frequency Distribution Table

	N	NNE	NE	ENE	E	ESE	SE	SSE	S	SSW	SW	WSW	W	WNW	NW	NNW	Total
calm	0.06	0.02	0.01	0.01	0.01	0.02	0.01	0.02	0.03	•	•	0.01	0.02	0.01	0.01	0.03	0.30
0 - 5 kts	0.72	0.66	0.48	0.78	0.66	0.56	0.81	0.86	0.84	1.08	0.87	0.96	0.78	0.64	0.91	0.68	12.30
5 - 10 kts	1.69	1.71	1.29	1.46	1.71	2.27	2.19	2.96	3.60	3.68	4.20	3.73	2.69	2.20	2.20	1.81	39.39
10 - 15 kts	1.71	1.27	1.47	1.42	1.47	0.71	0.96	1.73	3.88	6.02	5.25	3.25	1.62	1.00	1.28	1.31	34.34
15 - 20 kts	0.44	0.68	0.72	0.84	0.43	0.16	0.18	0.23	1.33	2.97	1.48	0.37	0.07	0.13	0.38	0.45	10.86
20 - 25 kts	0.07	0.29	0.45	0.44	0.07	•	0.05	0.09	0.17	0.33	0.10	0.02	0.01	0.01	0.06	0.06	2.22
25 - 30 kts	0.03	0.06	0.13	0.10	0.01	0.01	0.06	•	•	0.01	•	0.01	•	0.02	•	•	0.45
30 - 35 kts	•	0.01	0.01	0.01	•	•	0.01	•	•	•	•	•	•	•	•	•	0.05
35 - 40 kts	•	0.01	•	•	•	0.01	•	•	•	•	•	•	•	•	•	•	0.02
40 - 45 kts	•	•	•	•	•	0.01	•	•	0.01	•	0.01	•	•	•	•	0.01	0.05
45 - 50 kts	•	0.01	•	•	•	•	•	•	•	•	•	•	0.01	•	•	•	0.02
Total	4.73	4.72	4.57	5.06	4.36	3.76	4.26	5.89	9.87	14.10	11.92	8.34	5.21	4.02	4.83	4.35	100.00