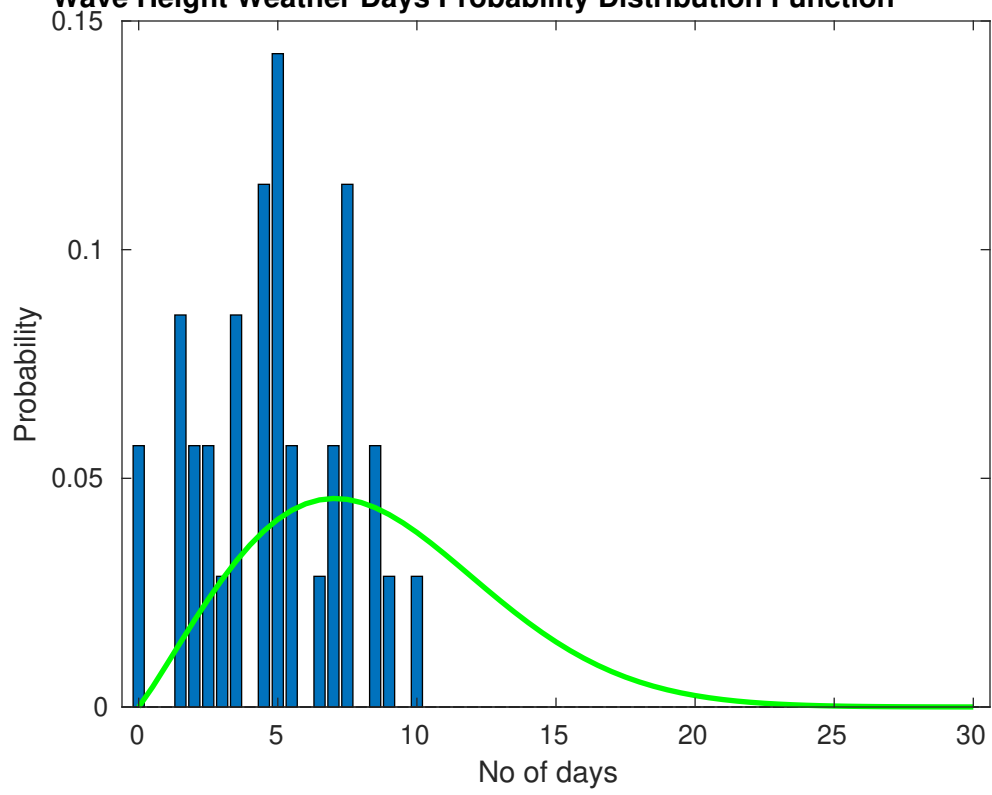
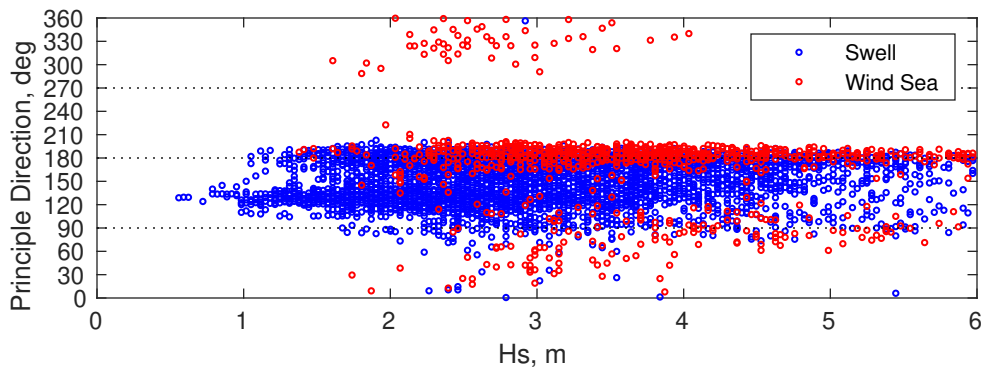
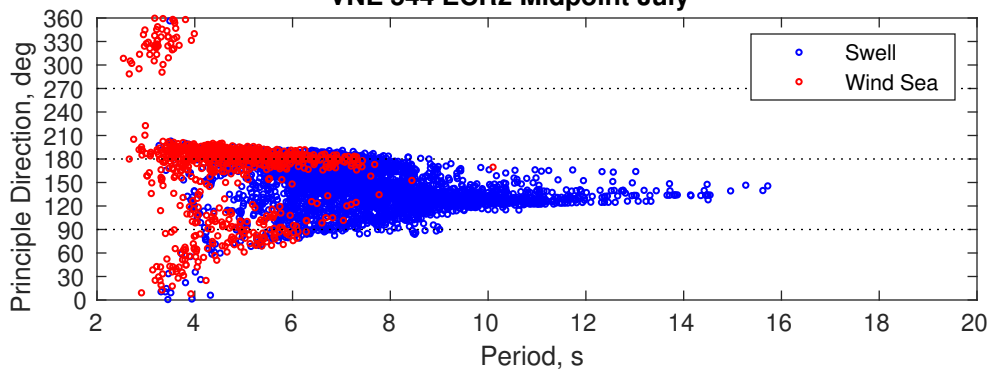


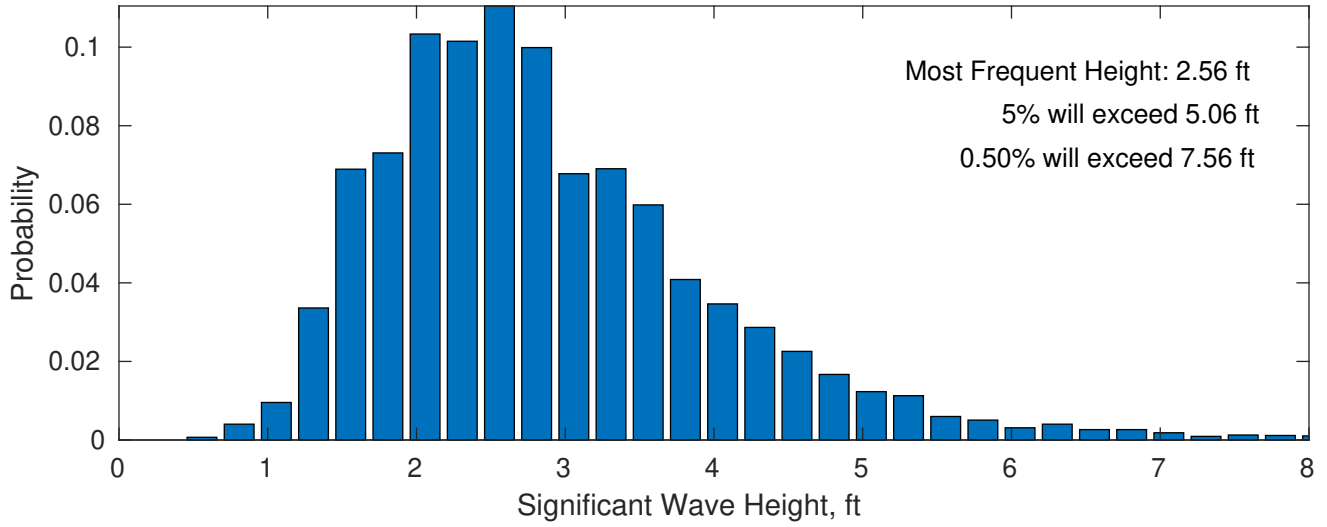
Wave Height Weather Days Probability Distribution Function



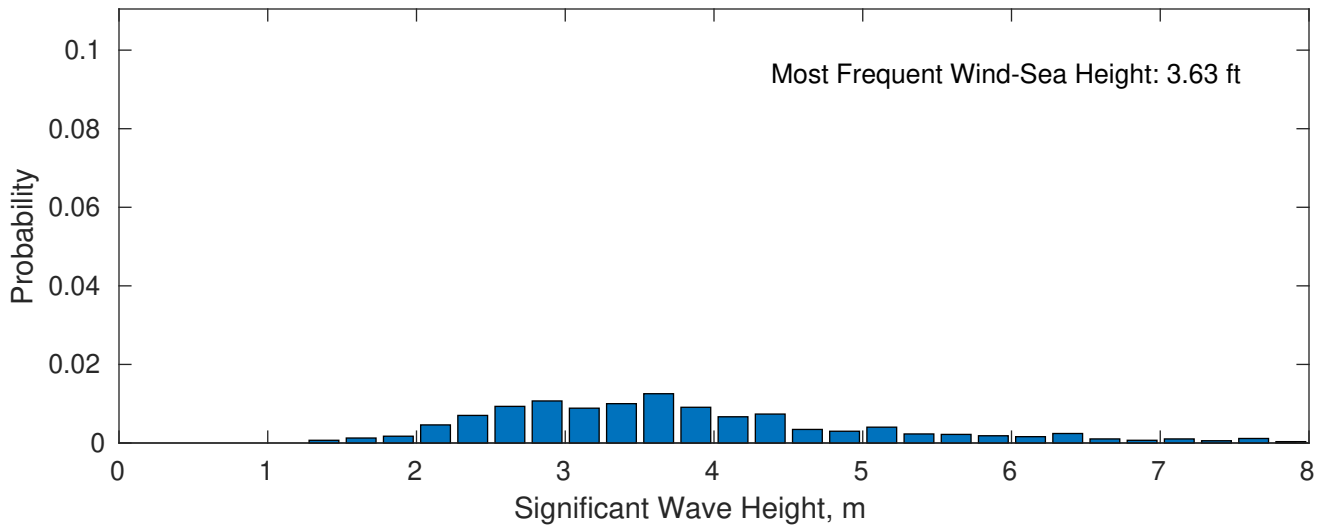
VNE 544 ECR2 Midpoint July



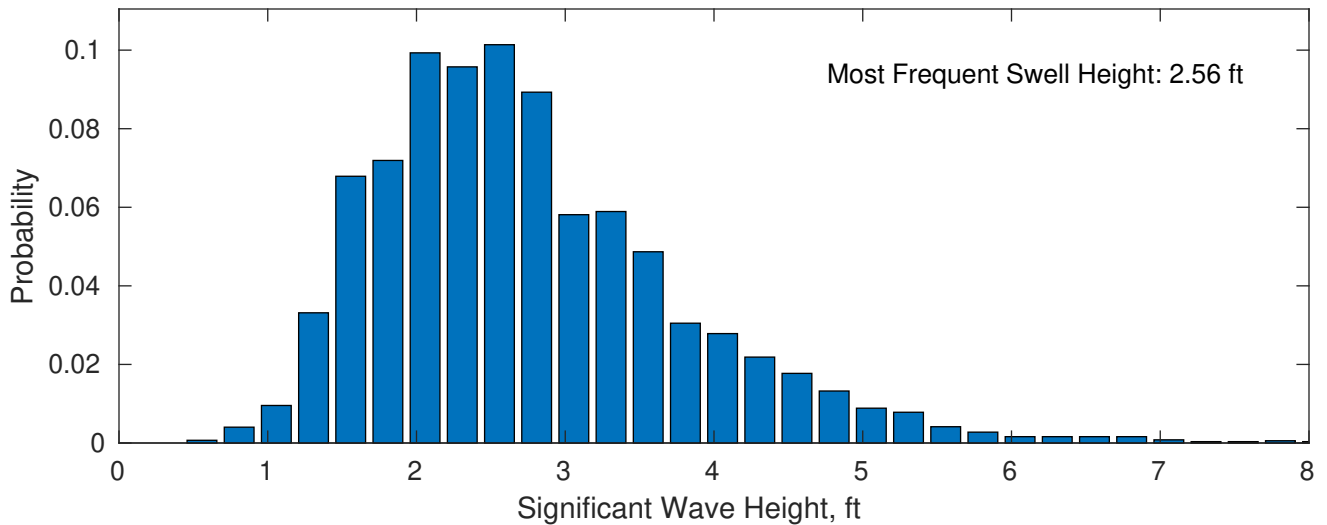
July Wave Height PDF: 1979 - 2015



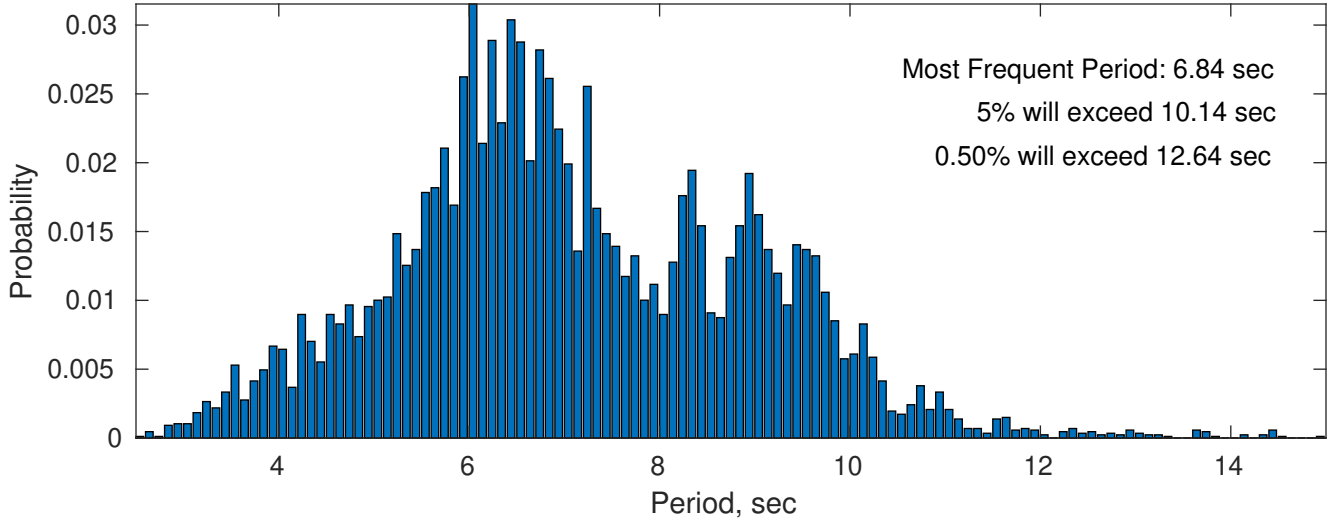
Wind-Sea: 11.71%



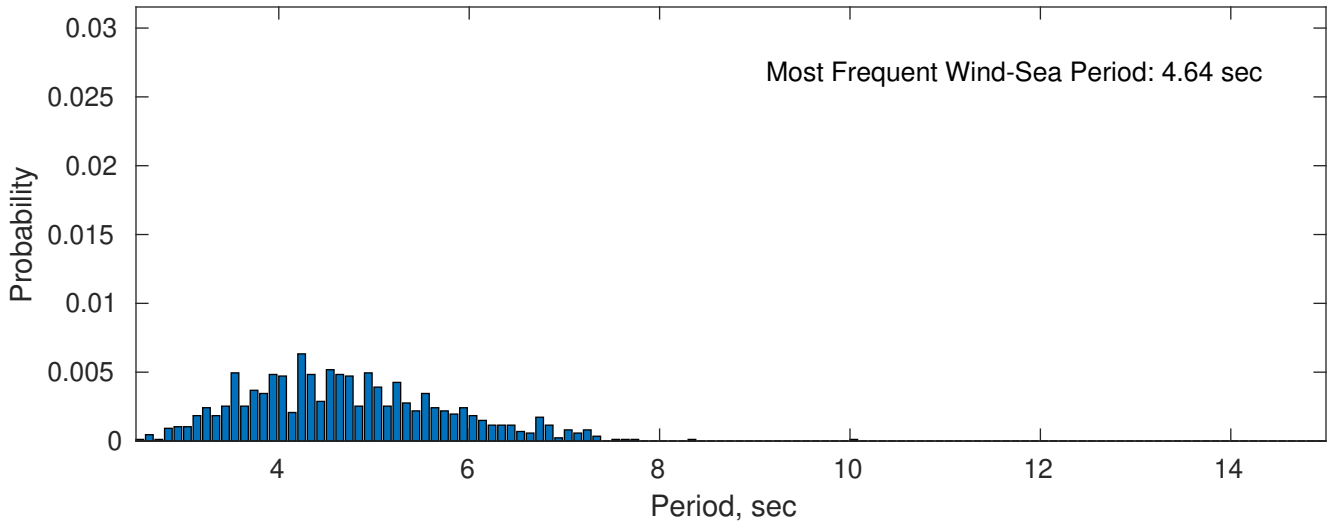
Swell: 88.29%



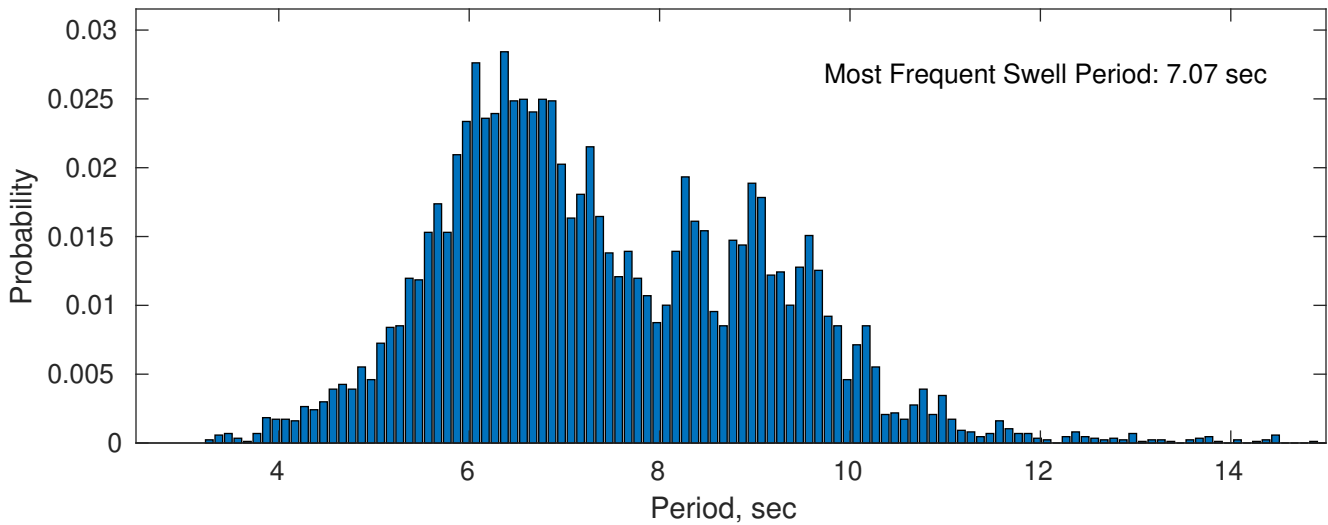
July Peak Wave Period PDF: 1979 - 2015



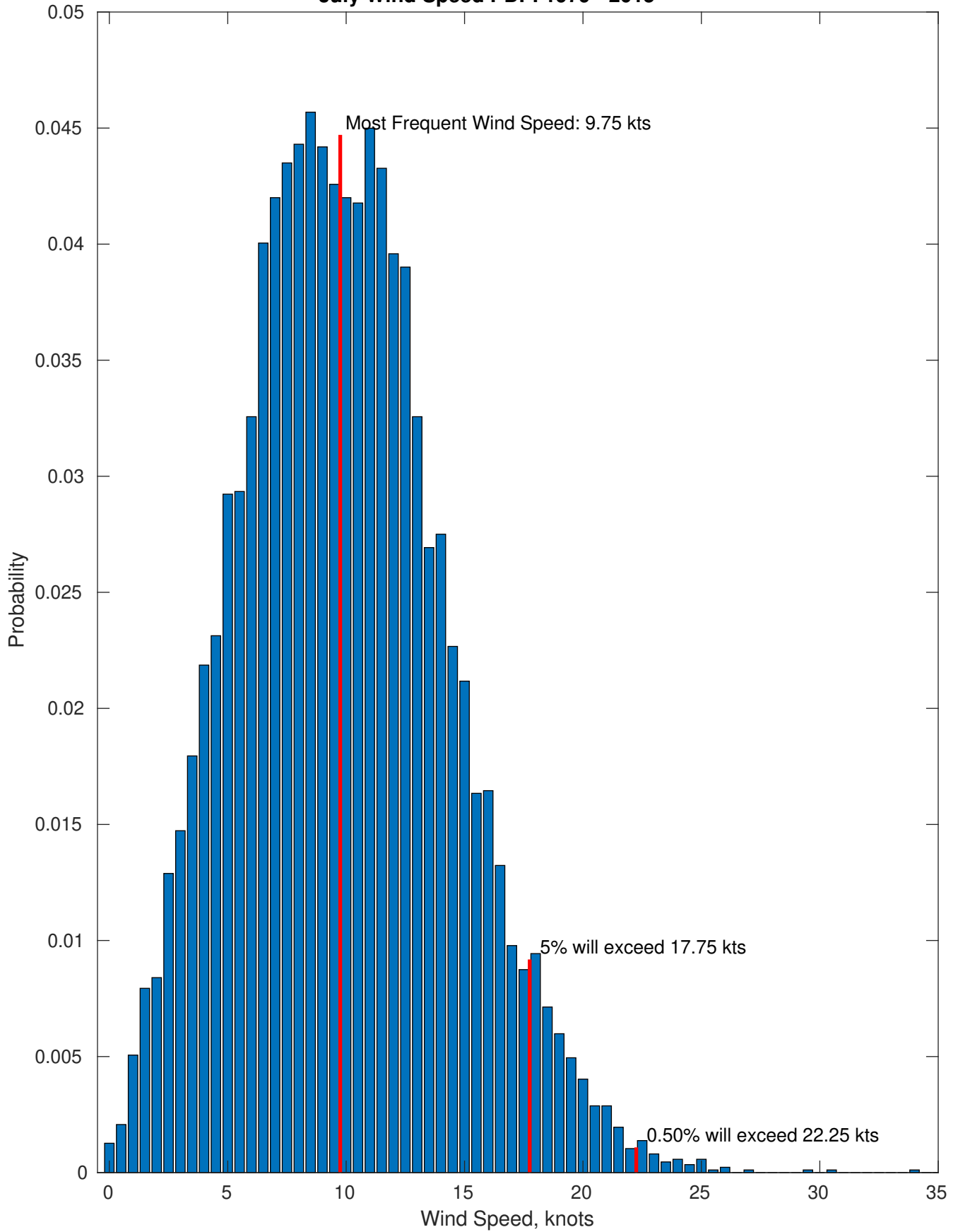
Wind-Sea: 11.71%



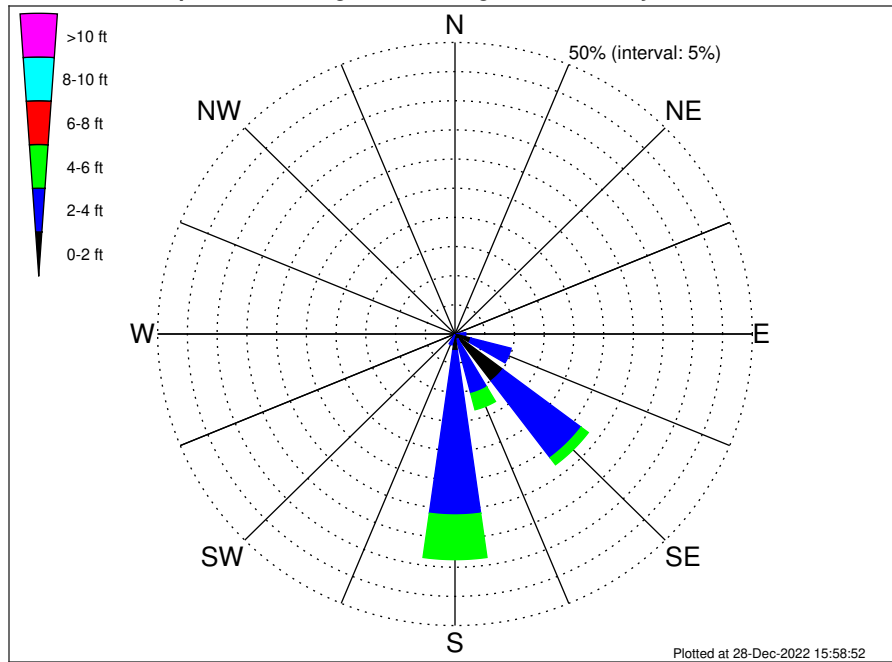
Swell: 88.29%



July Wind Speed PDF: 1979 - 2015



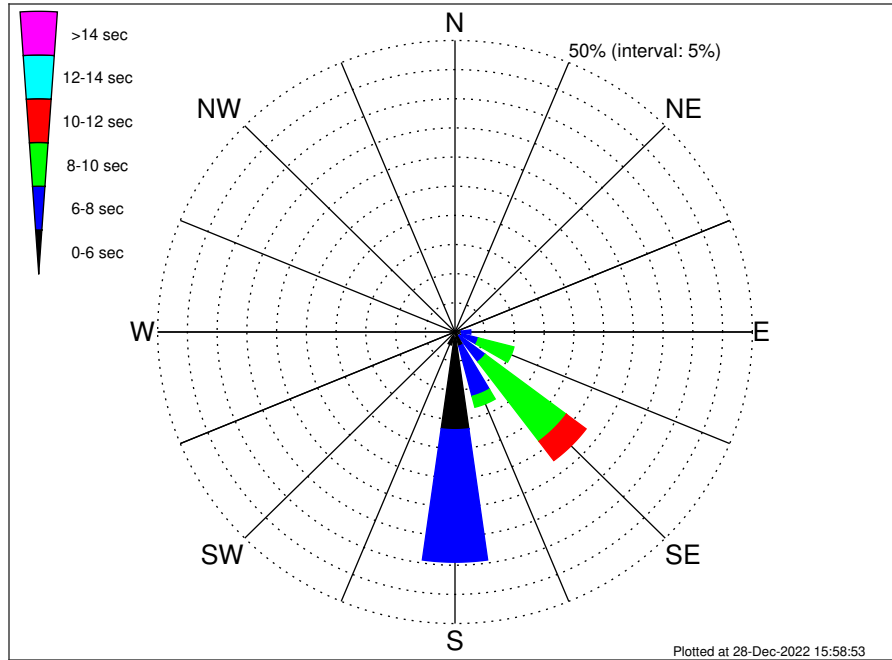
VNE 544 ECR2 Midpoint Climatological WaveHeight Rose for July: 1979 - 2015



Joint Frequency Distribution Table

	N	NNE	NE	ENE	E	ESE	SE	SSE	S	SSW	SW	WSW	W	WNW	NW	NNW	Total
calm	•	•	•	•	•	0.05	0.25	•	•	•	•	•	•	•	•	•	0.30
1 - 2 ft	0.01	0.01	•	•	0.10	2.72	9.82	1.01	2.87	0.22	0.01	•	•	0.03	0.01	•	16.81
2 - 4 ft	0.16	0.15	0.26	0.44	1.73	7.00	16.50	9.54	28.17	1.73	•	•	•	0.02	0.20	0.22	66.11
4 - 6 ft	0.01	•	•	0.24	0.96	1.01	1.51	2.88	7.66	0.35	•	•	•	•	•	0.01	14.63
6 - 8 ft	•	•	•	0.03	0.13	0.14	0.13	0.25	1.14	0.03	•	•	•	•	•	•	1.85
8 - 10 ft	•	•	•	•	0.01	0.02	0.05	0.01	0.16	•	•	•	•	•	•	•	0.25
10 - 12 ft	•	•	•	•	•	•	•	0.02	•	•	•	•	•	•	•	•	0.02
12 - 14 ft	•	•	•	•	•	•	•	•	•	•	•	•	•	•	•	•	•
14 - 16 ft	•	•	•	•	•	•	•	0.01	•	•	•	•	•	•	•	•	0.01
16 - 18 ft	•	•	•	•	•	•	•	•	0.01	•	•	•	•	•	•	•	0.01
> 18 ft	•	•	•	•	•	•	•	•	•	•	•	•	•	•	•	•	•
Total	0.18	0.16	0.26	0.71	2.92	10.93	28.25	13.73	40.01	2.32	0.01	•	•	0.06	0.21	0.23	100.00

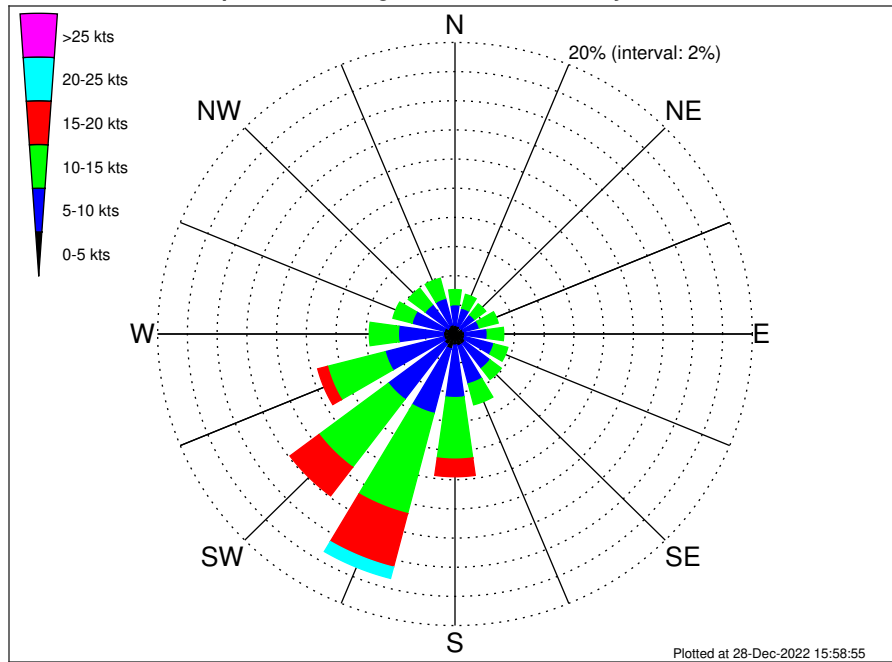
VNE 544 ECR2 Midpoint Climatological WavePeriod Rose for July: 1979 - 2015



Joint Frequency Distribution Table

	N	NNE	NE	ENE	E	ENE	SE	SSE	S	SSW	SW	WSW	W	WNW	NW	NNW	Total
calm	•	•	•	•	•	•	•	•	•	•	•	•	•	•	•	•	•
1 - 2 sec	•	•	•	•	•	•	•	•	•	•	•	•	•	•	•	•	•
2 - 4 sec	0.17	0.14	0.20	0.12	0.06	0.14	0.13	0.28	1.02	0.85	0.01	•	•	0.06	0.21	0.23	3.60
4 - 6 sec	0.01	0.02	0.07	0.59	1.02	1.12	0.81	2.23	15.73	1.45	•	•	•	•	•	•	23.05
6 - 8 sec	•	•	•	0.01	1.59	2.82	5.47	8.88	22.73	0.02	•	•	•	•	•	•	41.52
8 - 10 sec	•	•	•	•	0.25	6.17	17.07	1.94	0.52	•	•	•	•	•	•	•	25.95
10 - 12 sec	•	•	•	•	•	0.69	4.14	0.30	0.01	•	•	•	•	•	•	•	5.14
12 - 14 sec	•	•	•	•	•	•	0.51	0.07	•	•	•	•	•	•	•	•	0.58
14 - 16 sec	•	•	•	•	•	•	0.14	0.02	•	•	•	•	•	•	•	•	0.16
18 - 20 sec	•	•	•	•	•	•	•	•	•	•	•	•	•	•	•	•	•
22 - 24 sec	•	•	•	•	•	•	•	•	•	•	•	•	•	•	•	•	•
Total	0.18	0.16	0.26	0.71	2.92	10.93	28.25	13.73	40.01	2.32	0.01	•	•	0.06	0.21	0.23	100.00

VNE 544 ECR2 Midpoint Climatological Wind Rose for July: 1979 - 2015



Joint Frequency Distribution Table

	N	NNE	NE	ENE	E	ESE	SE	SSE	S	SSW	SW	WSW	W	WNW	NW	NNW	Total
calm	•	0.03	0.03	0.02	0.01	0.01	0.07	0.02	0.01	0.05	0.01	0.01	•	0.02	•	0.02	0.33
0 - 5 kts	0.61	0.55	0.48	0.55	0.64	0.67	0.76	0.82	0.76	1.00	0.87	0.76	0.78	0.72	0.58	0.63	11.20
5 - 10 kts	1.40	1.24	1.14	1.12	1.52	2.03	2.13	2.69	3.59	4.58	4.73	4.09	3.03	2.24	1.94	1.88	39.34
10 - 15 kts	1.04	0.98	0.93	1.31	1.10	0.97	0.94	1.48	4.22	7.10	5.83	4.00	1.96	1.32	1.42	1.42	36.03
15 - 20 kts	0.33	0.26	0.37	0.40	0.26	0.15	0.06	0.21	1.21	3.80	2.45	0.68	0.18	0.25	0.37	0.33	11.32
20 - 25 kts	0.07	0.02	0.06	0.07	0.05	0.05	•	0.03	0.12	0.79	0.21	0.03	0.01	0.01	0.07	0.05	1.63
25 - 30 kts	•	0.02	0.01	0.01	•	•	0.01	•	0.01	0.03	•	0.01	•	•	•	•	0.12
30 - 35 kts	0.01	•	•	•	•	•	0.01	•	•	•	•	•	•	•	•	•	0.02
35 - 40 kts	•	•	•	•	•	•	•	•	•	•	•	•	•	•	•	•	•
40 - 45 kts	•	•	•	•	•	•	•	•	•	•	•	•	•	•	•	•	•
45 - 50 kts	•	•	•	•	•	•	•	•	•	•	•	•	•	•	•	•	•
Total	3.46	3.12	3.03	3.49	3.59	3.87	3.98	5.26	9.92	17.35	14.11	9.59	5.96	4.58	4.37	4.33	100.00