

VNE 544 ECR2 Midpoint - March

Latitude: 40.24 N Longitude: 73.53 W

Weather Days

Wave Height > 4.0 ft Mean: 11.4 days Range: 8.3 - 14.4 days p50:12.5 days p75:10.5 days p90:8.5 days

Wave Height > 5.0 ft Mean: 7.2 days Range: 4.3 - 10.2 days p50:8 days p75:5 days p90:4 days

Wave Height > 6.0 ft Mean: 4.7 days Range: 2.1 - 7.4 days p50:5 days p75:3 days p90:1.5 days

Wind Speed > 20.0 knots Mean: 5.4 days Range: 3.4 - 7.4 days p50:5.5 days p75:4 days p90:3.5 days

Wind Speed > 25.0 knots Mean: 1.7 days Range: 0.6 - 2.8 days p50:2 days p75:1 days p90:0.5 days

Wind Speed > 30.0 knots Mean: 0.4 days Range: 0.0 - 0.8 days p50:0.5 days p75:0.5 days p90:0.5 days

Working Window Probability

Wave Height < 4.0 ft 3 days or longer: 44%
 5 days or longer: 8%
 7 days or longer: 3%

Wave Height < 5.0 ft 3 days or longer: 59%
 5 days or longer: 21%
 7 days or longer: 10%

Wave Height < 6.0 ft 3 days or longer: 68%
 5 days or longer: 32%
 7 days or longer: 19%

Waves

Mean Height: 2 - 4 ft

The wave heights will occasionally reach 10 - 12 ft, but rarely higher.

Mean Period: 6 - 8 sec

The wave periods will occasionally reach 12 - 14 sec, but rarely longer.

Principle Direction, from: E

WindSea/Swell: 33% / 67%

Winds

Mean Speed: 10 - 15 kts

The winds will occasionally reach 30 - 35 kts, but rarely greater.

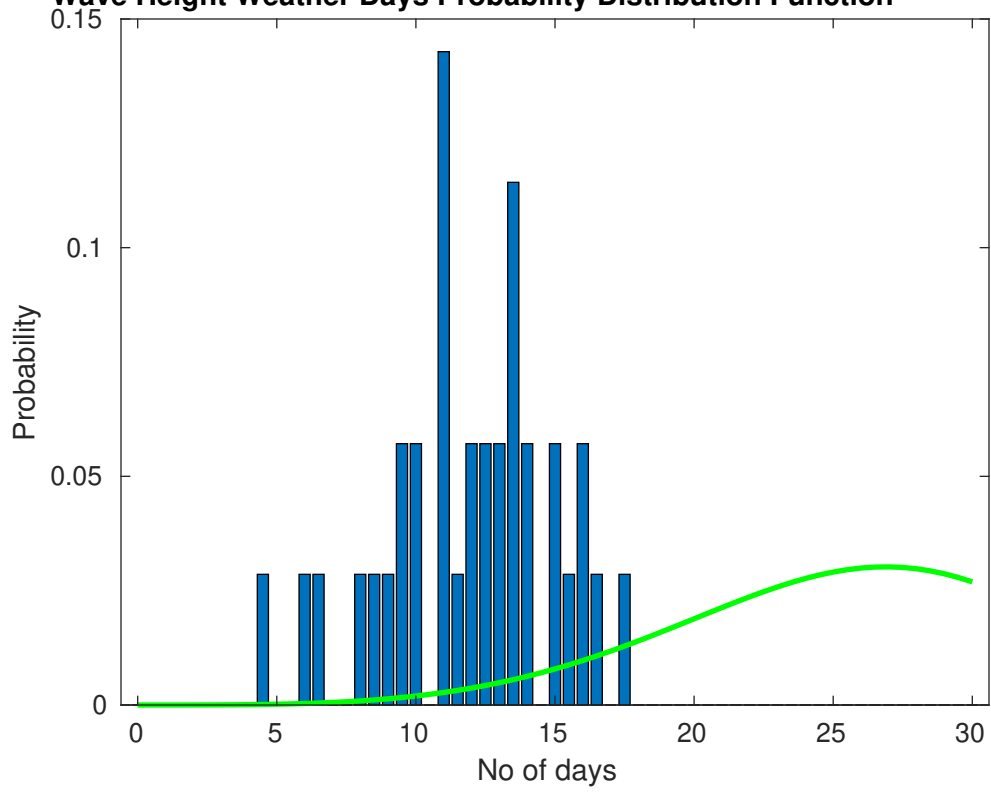
Principle Direction, from: NW

Severe Storms

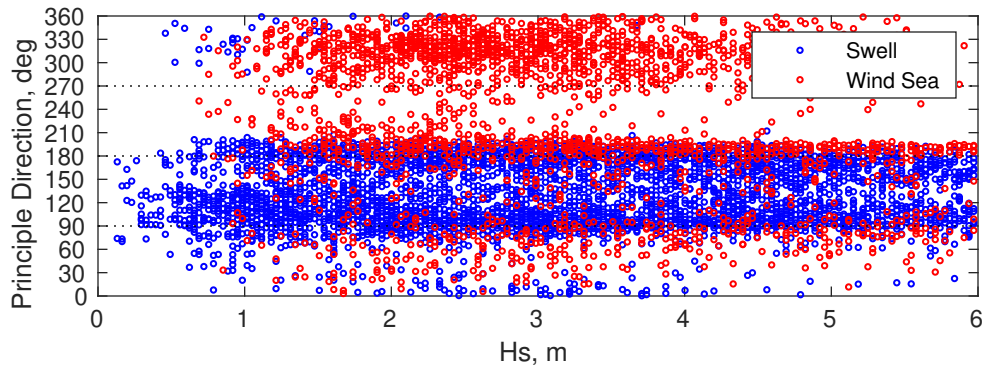
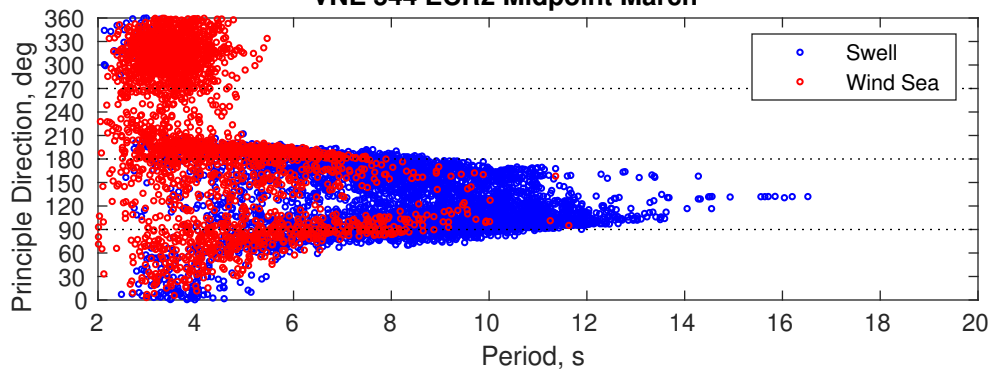
There is a 17 % chance of a storm occurring in the month with winds peaking above 34 kts.

There is a 34 % chance of a storm occurring in the month with waves peaking at 4m (13 ft) or greater.

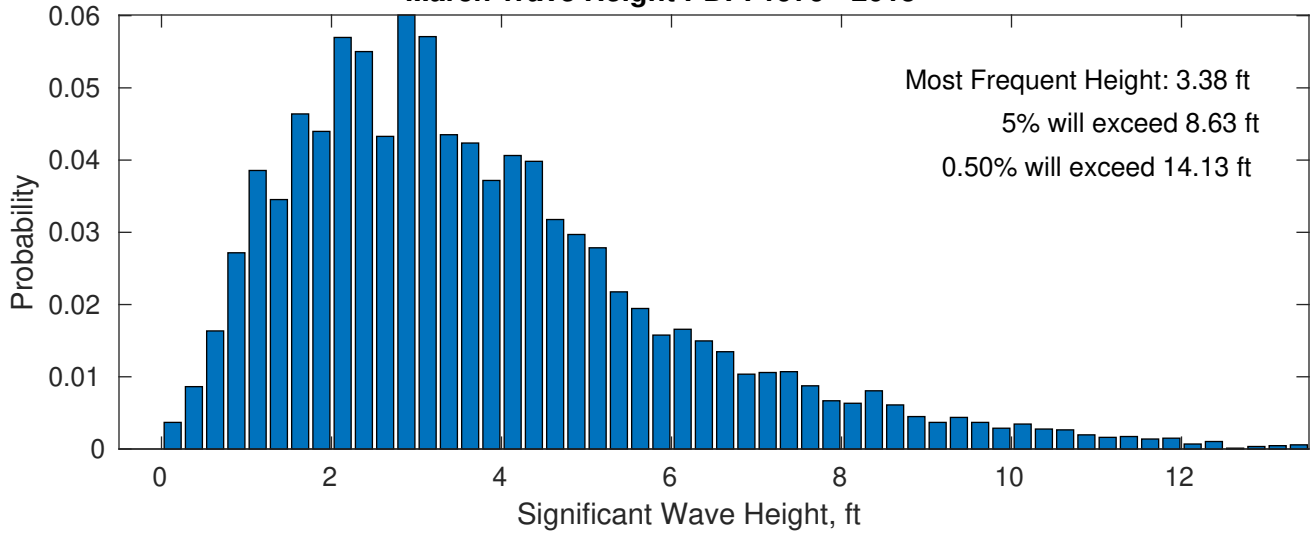
Wave Height Weather Days Probability Distribution Function



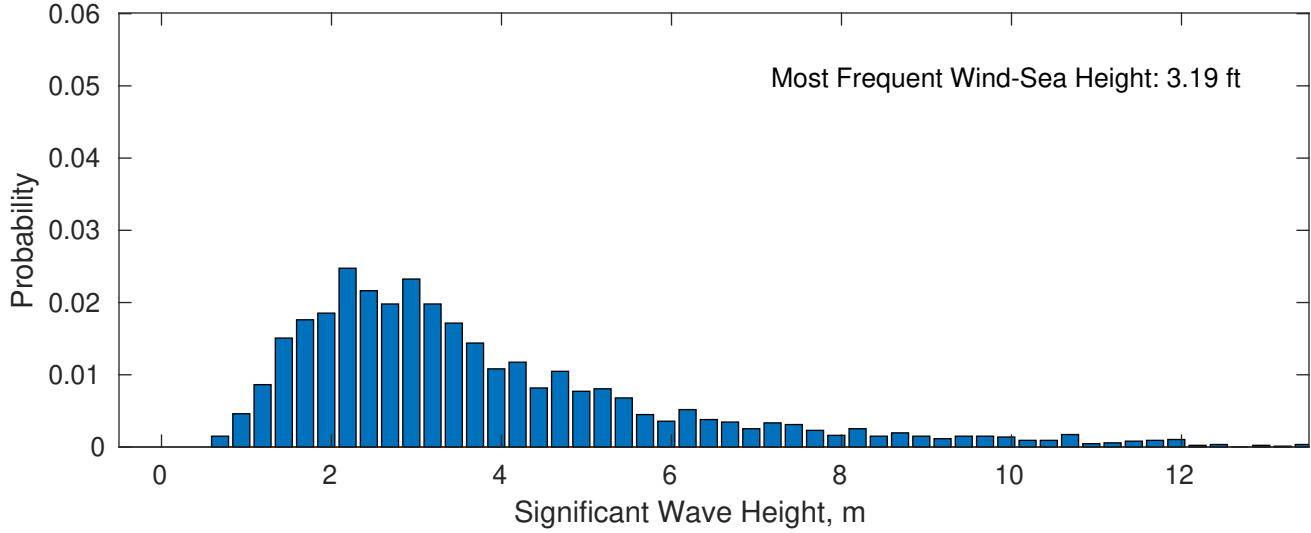
VNE 544 ECR2 Midpoint March



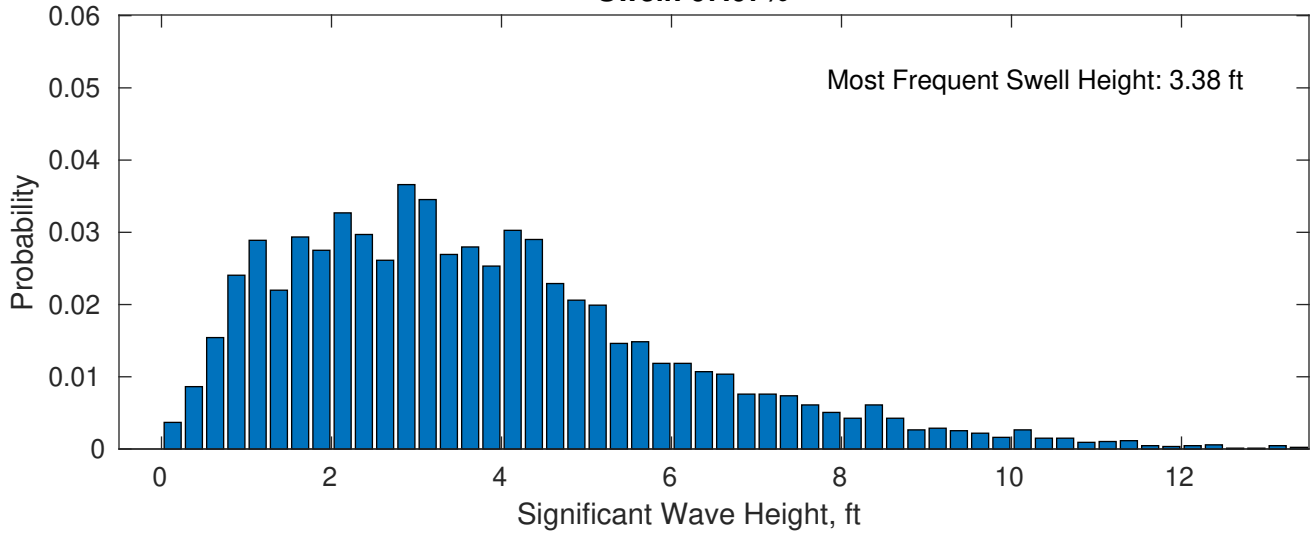
March Wave Height PDF: 1979 - 2015



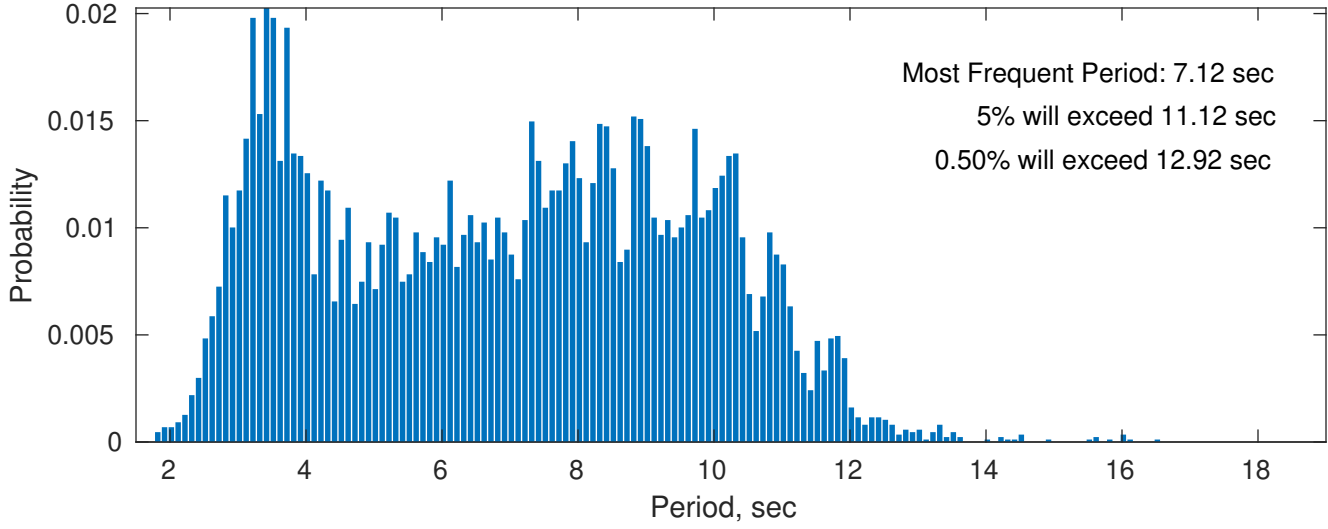
Wind-Sea: 32.93%



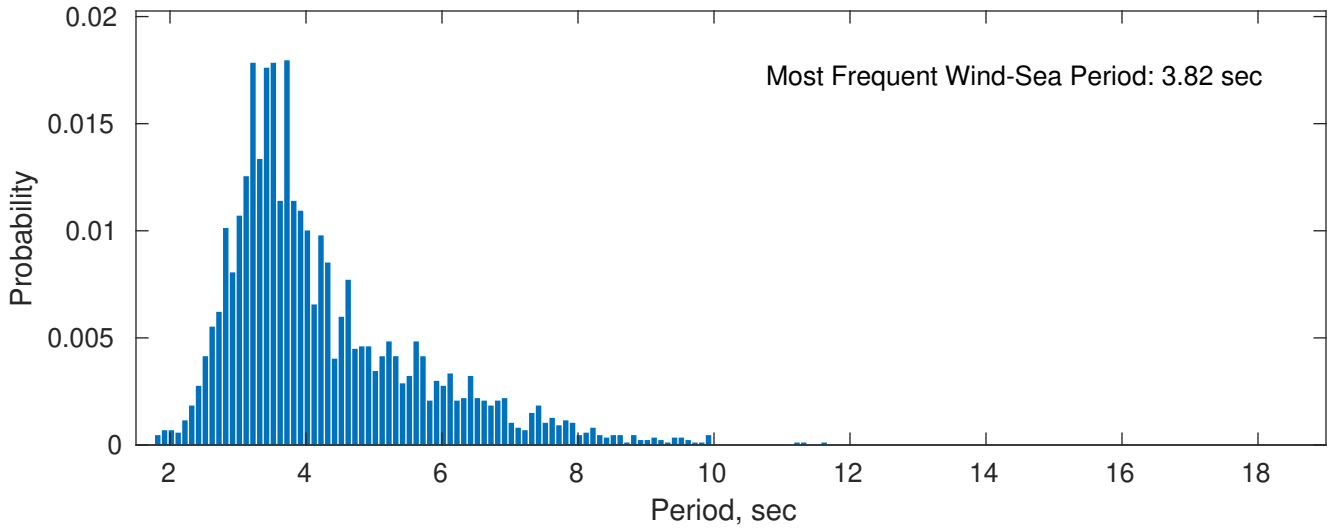
Swell: 67.07%



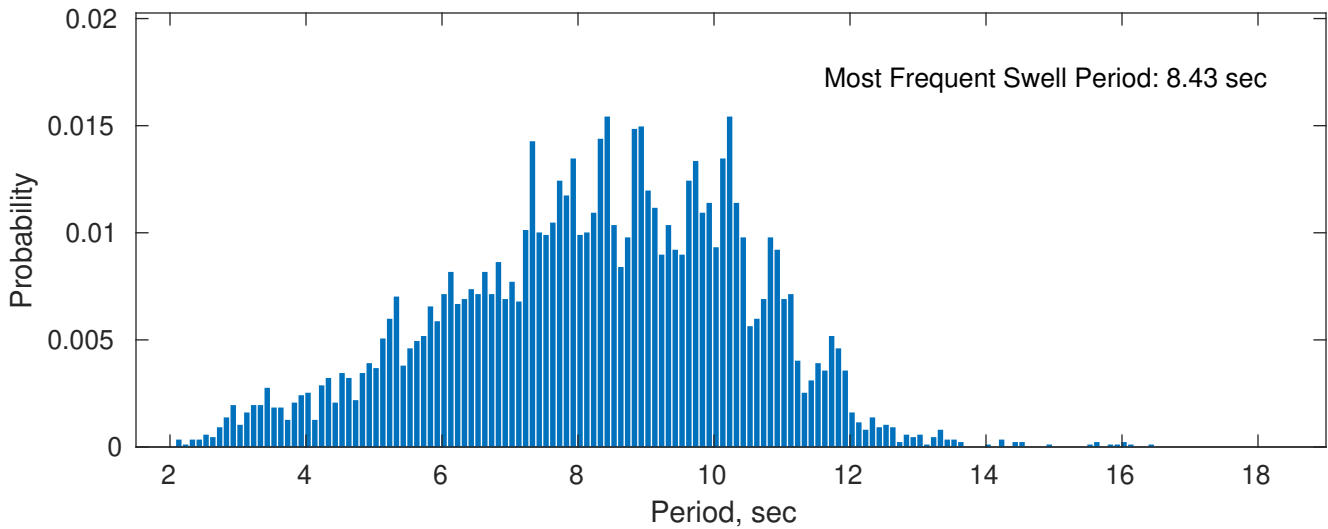
March Peak Wave Period PDF: 1979 - 2015



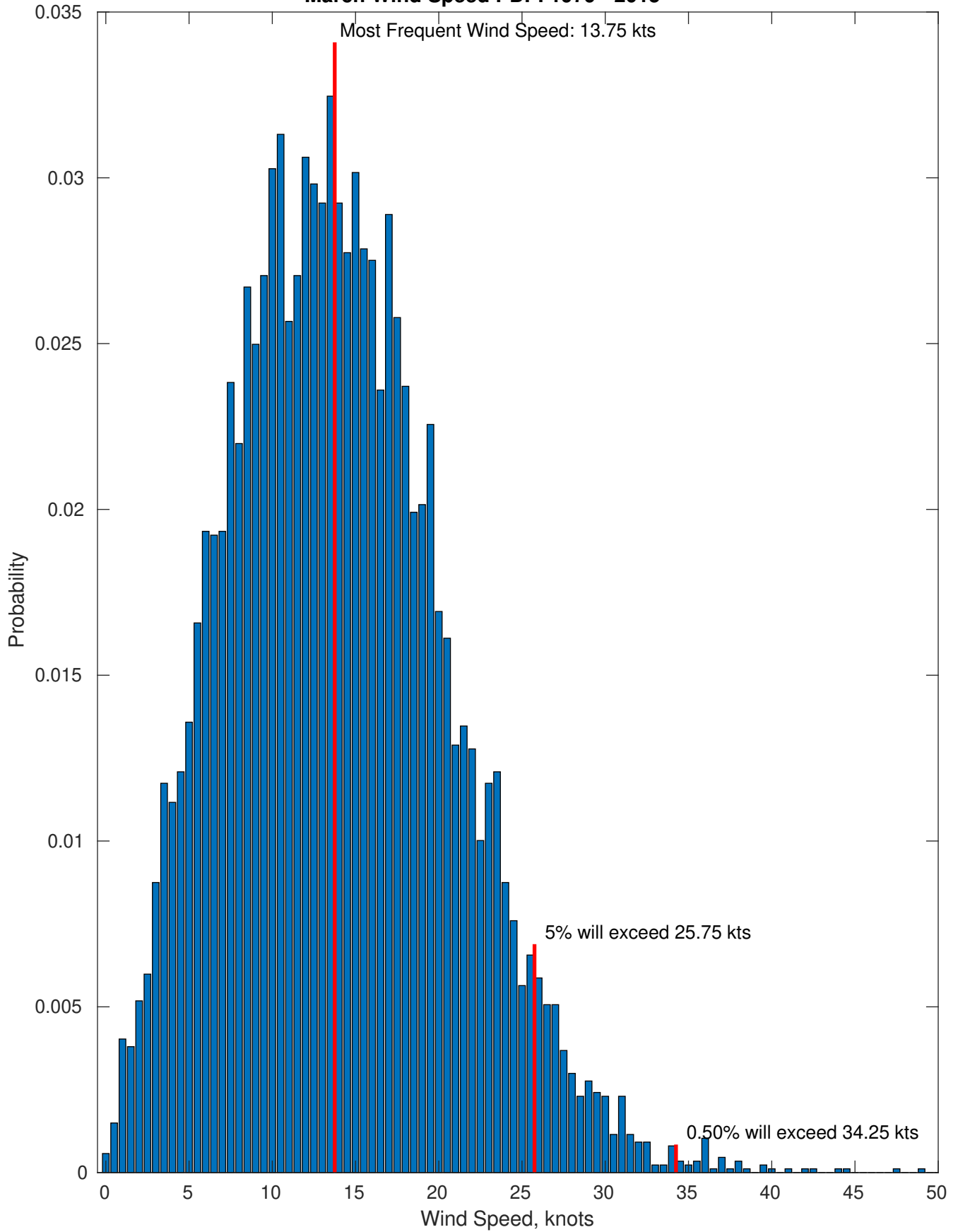
Wind-Sea: 32.93%



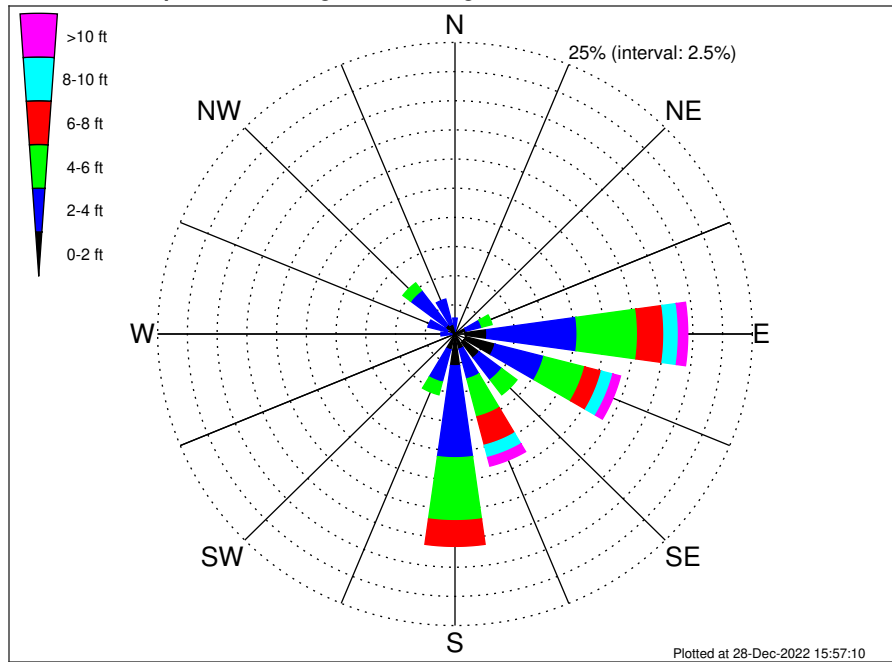
Swell: 67.07%



March Wind Speed PDF: 1979 - 2015



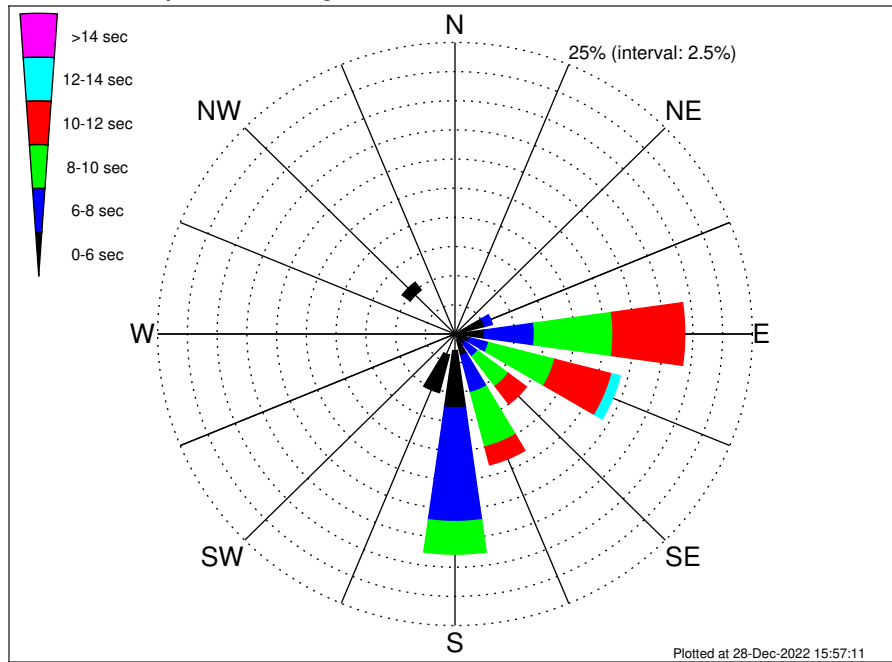
VNE 544 ECR2 Midpoint Climatological WaveHeight Rose for March: 1979 - 2015



Joint Frequency Distribution Table

	N	NNE	NE	ENE	E	ESE	SE	SSE	S	SSW	SW	WSW	W	WNW	NW	NNW	Total
calm	0.02	0.05	0.13	0.24	0.85	0.91	0.89	0.23	0.39	0.16	0.02	0.03	•	0.08	0.10	0.08	4.19
1 - 2 ft	0.23	0.23	0.23	0.71	1.83	2.57	1.66	1.11	2.34	1.24	0.31	0.12	0.29	0.60	0.89	0.78	15.13
2 - 4 ft	1.12	0.52	0.55	1.37	7.59	4.24	2.37	2.64	7.89	2.87	0.36	0.21	0.90	1.68	3.68	2.23	40.20
4 - 6 ft	0.23	0.13	0.25	0.90	5.09	3.56	1.61	3.36	5.40	1.12	0.03	0.08	0.26	0.45	0.82	0.41	23.70
6 - 8 ft	0.01	0.06	0.01	0.40	2.21	1.45	0.56	2.52	2.20	0.18	•	0.01	0.02	0.05	0.05	•	9.74
8 - 10 ft	•	•	•	0.07	1.22	0.99	0.29	1.08	0.53	•	•	•	•	•	0.02	0.01	4.21
10 - 12 ft	•	•	•	•	0.55	0.32	0.21	0.52	0.16	•	•	•	•	•	•	•	1.76
12 - 14 ft	•	•	•	•	0.09	0.16	0.07	0.16	0.01	•	•	•	•	•	•	•	0.49
14 - 16 ft	•	•	•	•	0.06	0.10	0.10	0.06	•	•	•	•	•	•	•	•	0.32
16 - 18 ft	•	•	•	•	0.03	0.06	0.06	0.03	•	•	•	•	•	•	•	•	0.18
> 18 ft	•	•	•	•	0.05	0.02	•	•	•	•	•	•	•	•	•	•	0.07
Total	1.61	0.98	1.17	3.70	19.57	14.38	7.82	11.71	18.91	5.57	0.73	0.45	1.47	2.85	5.56	3.52	100.00

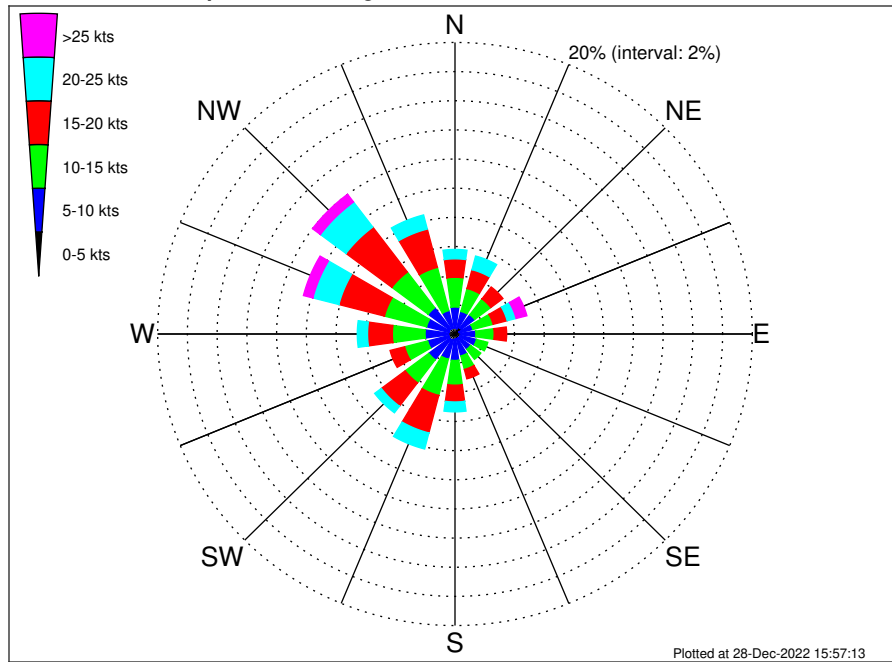
VNE 544 ECR2 Midpoint Climatological WavePeriod Rose for March: 1979 - 2015



Joint Frequency Distribution Table

	N	NNE	NE	ENE	E	ESE	SE	SSE	S	SSW	SW	WSW	W	WNW	NW	NNW	Total
calm	•	•	•	•	•	•	•	•	•	•	•	•	•	•	•	•	•
1 - 2 sec	•	•	•	•	•	•	•	0.01	0.01	•	0.01	0.02	•	0.02	•	•	0.08
2 - 4 sec	1.28	0.67	0.64	0.53	0.43	0.32	0.36	0.53	1.42	1.86	0.62	0.35	1.24	2.45	4.71	3.10	20.50
4 - 6 sec	0.33	0.31	0.53	2.05	2.00	0.93	0.70	1.37	4.90	3.33	0.09	0.08	0.23	0.38	0.85	0.43	18.52
6 - 8 sec	•	•	•	0.67	4.25	1.68	1.32	3.27	9.75	0.38	•	•	•	•	•	•	21.32
8 - 10 sec	•	•	•	0.45	6.61	5.73	3.22	4.82	2.80	•	•	•	•	•	•	•	23.63
10 - 12 sec	•	•	•	•	6.03	4.96	1.91	1.59	0.03	•	•	•	•	•	•	•	14.53
12 - 14 sec	•	•	•	•	0.25	0.73	0.13	0.10	•	•	•	•	•	•	•	•	1.21
14 - 16 sec	•	•	•	•	•	0.02	0.12	0.01	•	•	•	•	•	•	•	•	0.15
18 - 20 sec	•	•	•	•	•	•	0.06	•	•	•	•	•	•	•	•	•	0.06
22 - 24 sec	•	•	•	•	•	•	•	•	•	•	•	•	•	•	•	•	•
Total	1.61	0.98	1.17	3.70	19.57	14.38	7.82	11.71	18.91	5.57	0.73	0.45	1.47	2.85	5.56	3.52	100.00

VNE 544 ECR2 Midpoint Climatological Wind Rose for March: 1979 - 2015



Joint Frequency Distribution Table

	N	NNE	NE	ENE	E	ESE	SE	SSE	S	SSW	SW	WSW	W	WNW	NW	NNW	Total
calm	0.02	•	0.01	0.01	0.02	0.02	•	•	0.03	0.03	•	•	•	0.02	0.01	0.01	0.21
0 - 5 kts	0.40	0.38	0.51	0.29	0.38	0.32	0.37	0.33	0.32	0.39	0.47	0.43	0.44	0.39	0.45	0.40	6.27
5 - 10 kts	1.43	1.22	1.14	0.94	1.00	1.15	0.94	1.22	1.46	1.36	1.74	1.47	1.58	1.57	1.80	1.24	21.26
10 - 15 kts	2.04	1.62	1.36	1.40	1.23	0.78	0.86	0.96	1.69	2.57	1.98	1.60	2.20	2.92	3.06	3.06	29.34
15 - 20 kts	1.27	1.34	1.02	0.98	0.84	0.25	0.39	0.67	1.15	2.66	2.01	1.01	1.67	3.17	3.87	2.72	25.01
20 - 25 kts	0.64	0.97	0.40	0.62	0.46	0.30	0.29	0.23	0.68	1.14	0.56	0.29	0.69	1.81	2.15	1.00	12.24
25 - 30 kts	0.24	0.30	0.31	0.44	0.17	0.09	0.10	0.13	0.26	0.31	0.09	0.02	0.33	0.59	0.60	0.24	4.24
30 - 35 kts	0.07	0.09	0.10	0.15	0.12	0.03	0.05	0.08	0.02	0.09	•	0.05	0.07	0.05	0.06	0.01	1.04
35 - 40 kts	•	0.01	0.01	0.08	0.07	•	0.01	•	•	0.03	•	0.01	0.02	0.02	0.01	0.01	0.30
40 - 45 kts	•	•	•	0.06	0.01	•	•	•	•	•	•	•	•	•	•	•	0.07
45 - 50 kts	•	•	•	0.02	•	•	•	•	•	•	•	•	•	•	•	•	0.02
Total	6.11	5.93	4.87	5.00	4.31	2.96	3.02	3.61	5.63	8.59	6.86	4.88	7.00	10.53	12.01	8.70	100.00