

VNE 544 ECR2 Midpoint - November

Latitude: 40.24 N Longitude: 73.53 W

Weather Days

Wave Height > 4.0 ft Mean: 11.0 days Range: 7.8 - 14.2 days p50:12.5 days p75:10.5 days p90:8.5 days

Wave Height > 5.0 ft Mean: 6.7 days Range: 4.1 - 9.4 days p50:7.5 days p75:6 days p90:5 days

Wave Height > 6.0 ft Mean: 4.2 days Range: 2.1 - 6.4 days p50:4.5 days p75:3.5 days p90:2.5 days

Wind Speed > 20.0 knots Mean: 6.2 days Range: 4.3 - 8.2 days p50:6.5 days p75:5 days p90:4 days

Wind Speed > 25.0 knots Mean: 2.0 days Range: 0.9 - 3.1 days p50:2 days p75:1.5 days p90:1 days

Wind Speed > 30.0 knots Mean: 0.5 days Range: 0.0 - 1.0 days p50:0.5 days p75:0.5 days p90:0.5 days

Working Window Probability

Wave Height < 4.0 ft 3 days or longer: 45%
 5 days or longer: 10%
 7 days or longer: 3%

Wave Height < 5.0 ft 3 days or longer: 58%
 5 days or longer: 23%
 7 days or longer: 10%

Wave Height < 6.0 ft 3 days or longer: 71%
 5 days or longer: 44%
 7 days or longer: 28%

Waves

Mean Height: 2 - 4 ft

The wave heights will occasionally reach 12 - 14 ft, but rarely higher.

Mean Period: 6 - 8 sec

The wave periods will occasionally reach 12 - 14 sec, but rarely longer.

Principle Direction, from: ESE

WindSea/Swell: 34% / 66%

Winds

Mean Speed: 10 - 15 kts

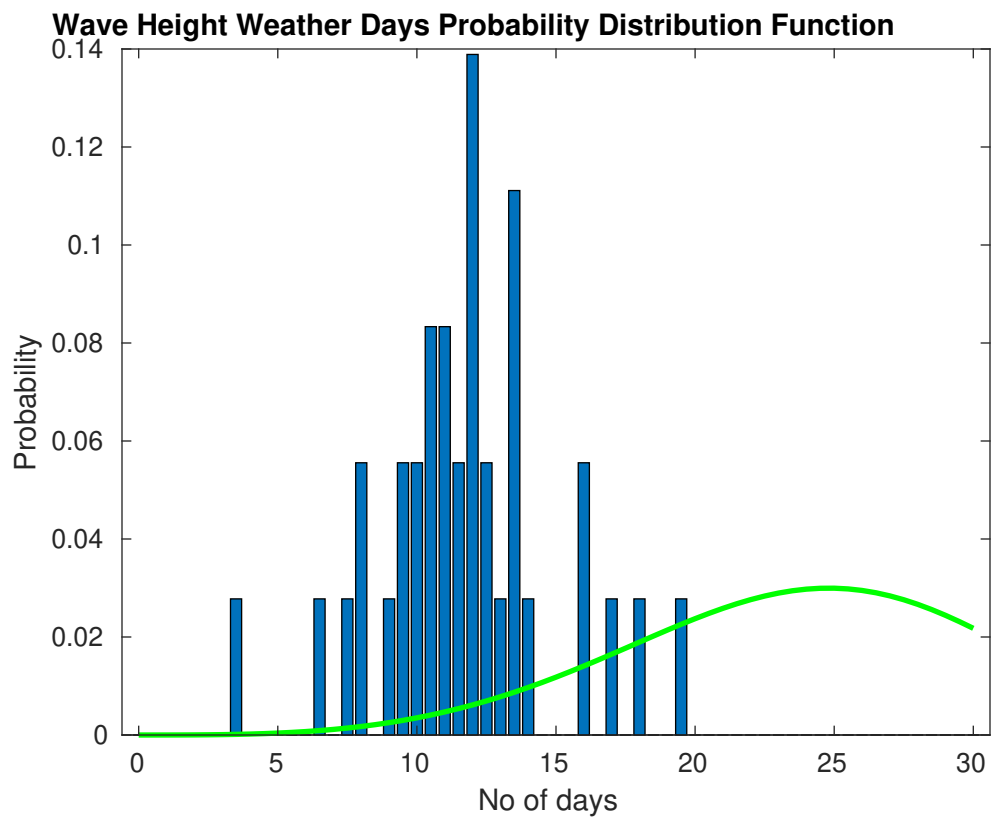
The winds will occasionally reach 30 - 35 kts, but rarely greater.

Principle Direction, from: WNW

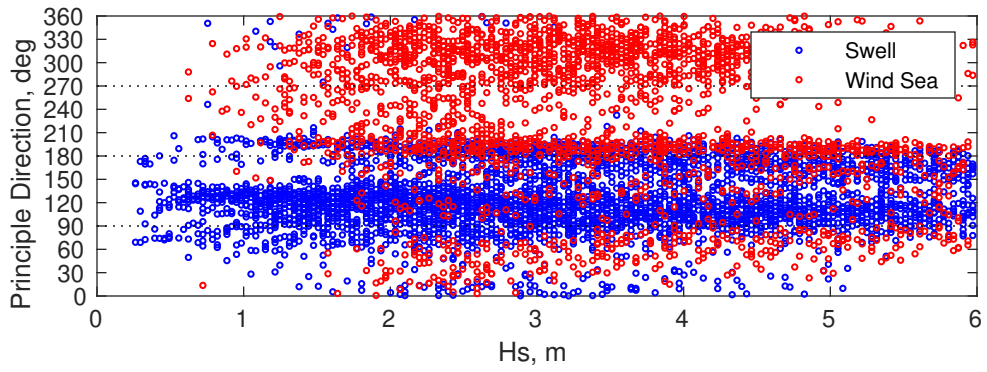
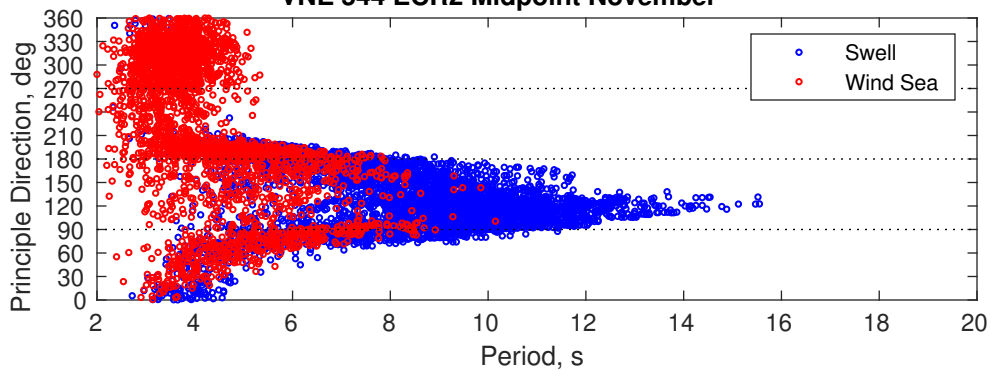
Severe Storms

There is a 14 % chance of a storm occurring in the month with winds peaking above 34 kts.

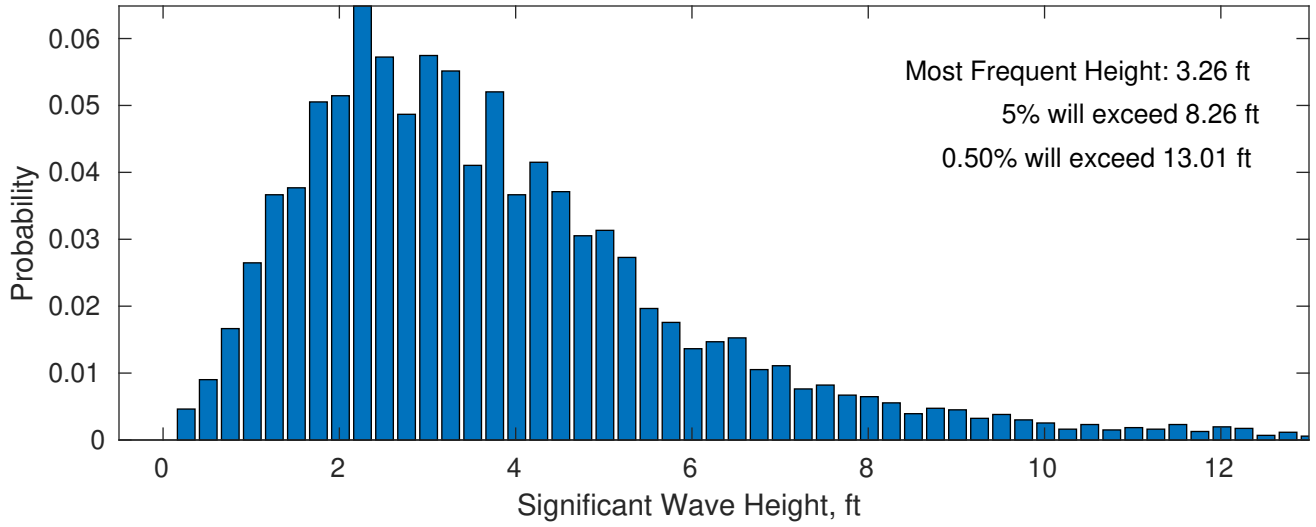
There is a 22 % chance of a storm occurring in the month with waves peaking at 4m (13 ft) or greater.



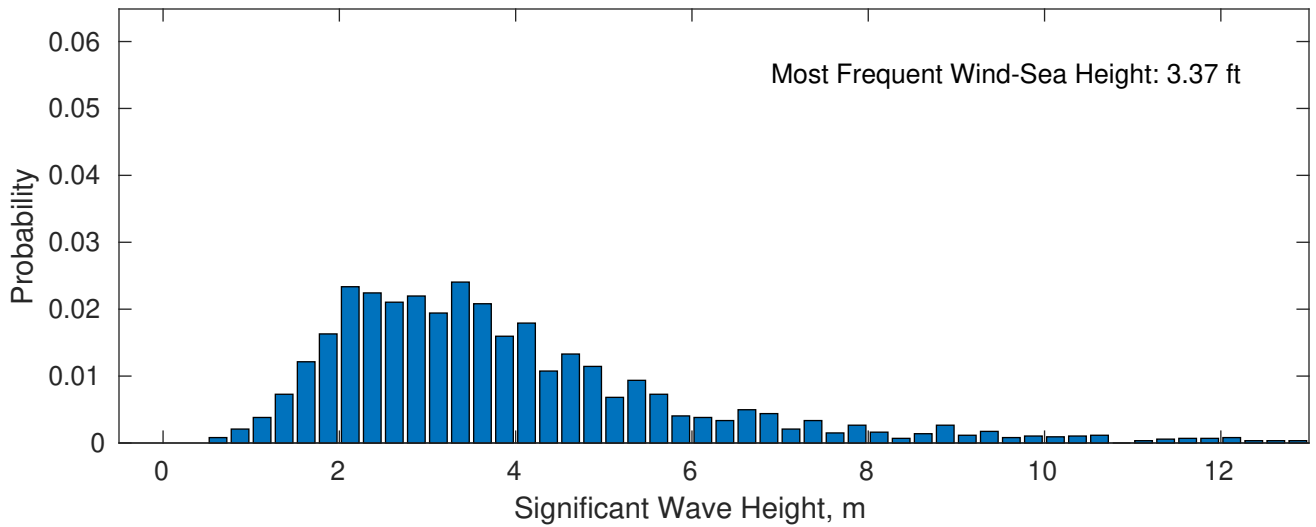
VNE 544 ECR2 Midpoint November



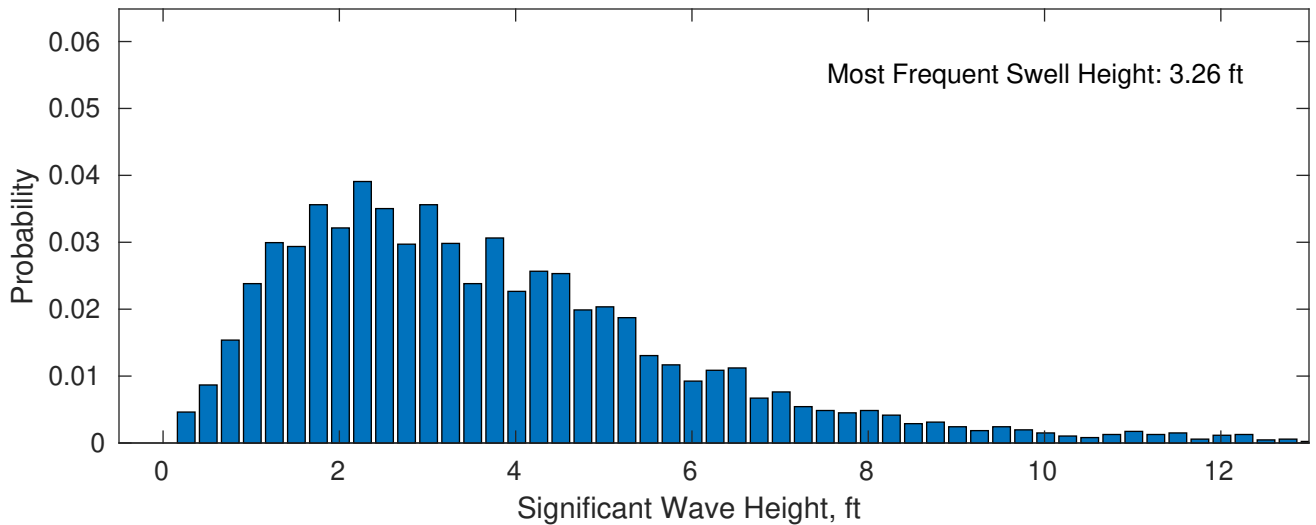
November Wave Height PDF: 1979 - 2015



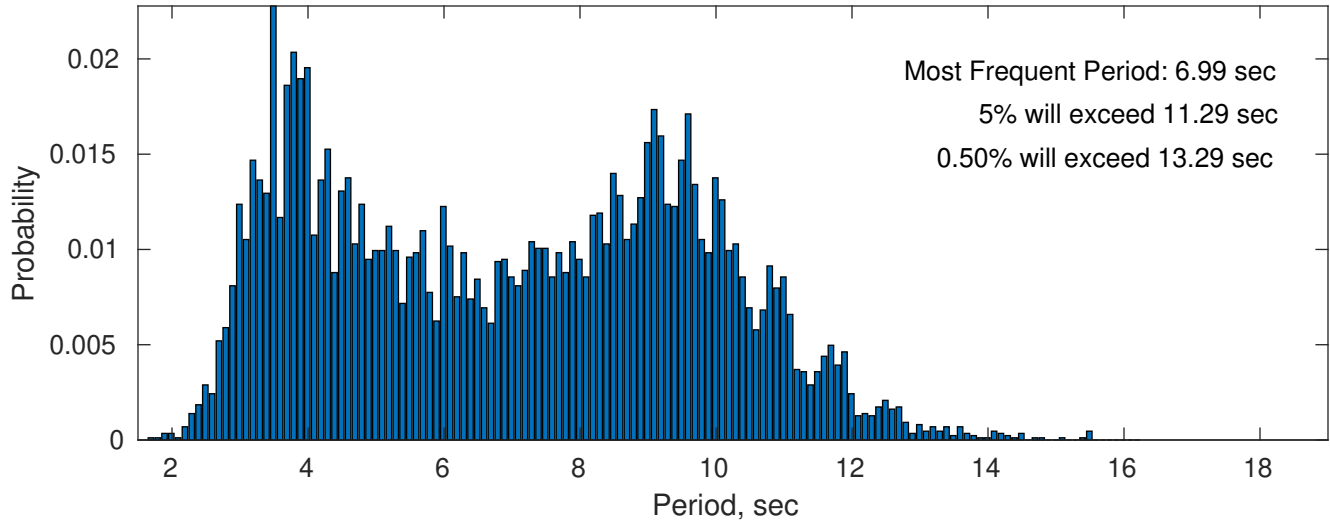
Wind-Sea: 33.91%



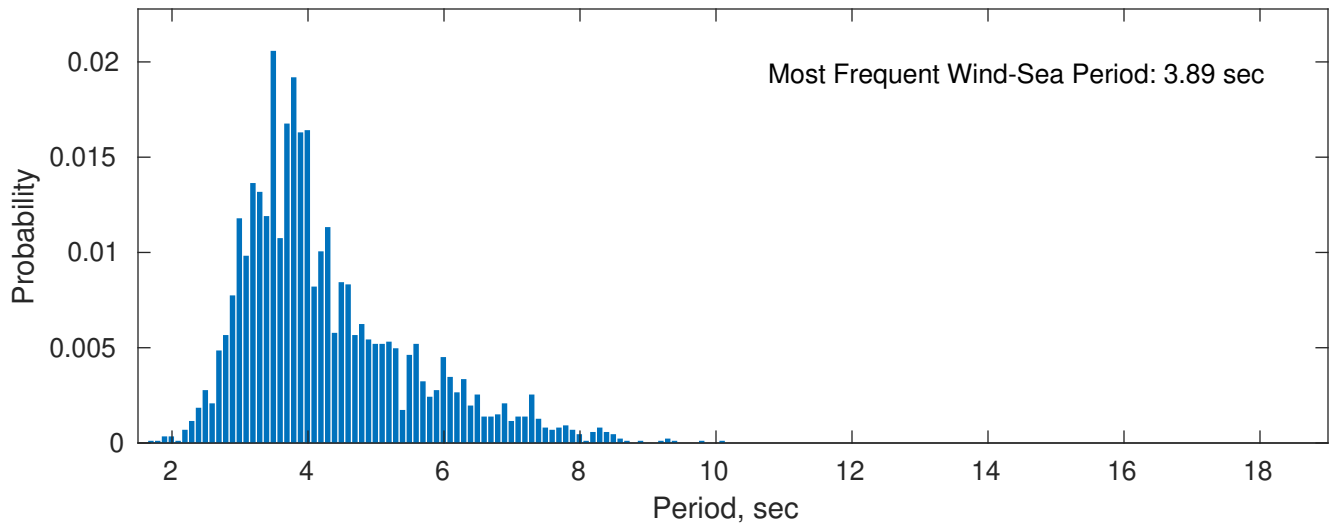
Swell: 66.09%



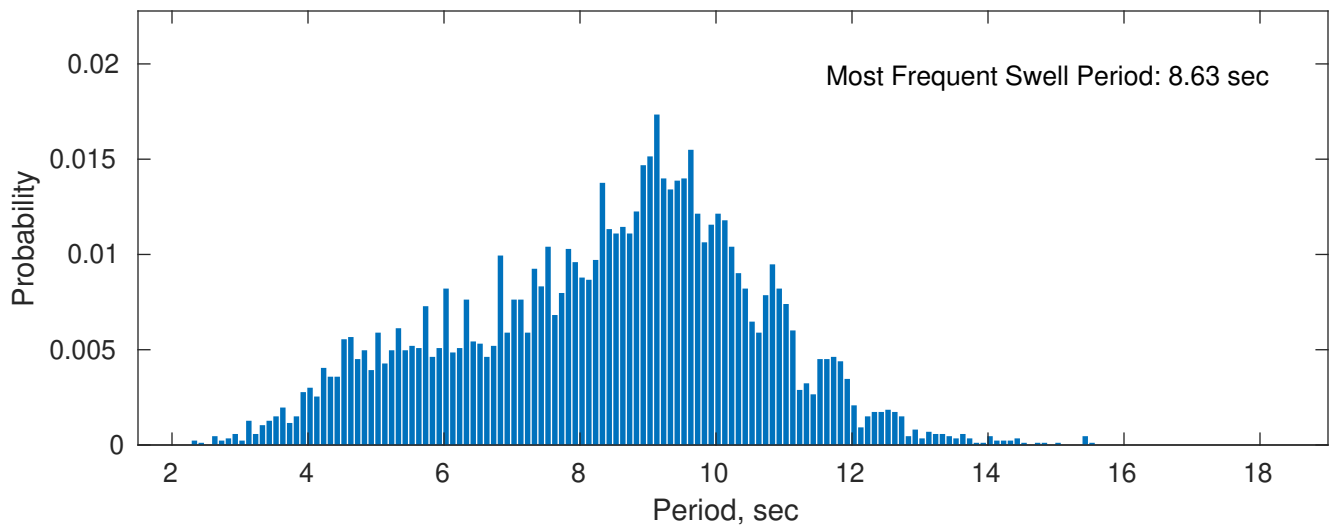
November Peak Wave Period PDF: 1979 - 2015



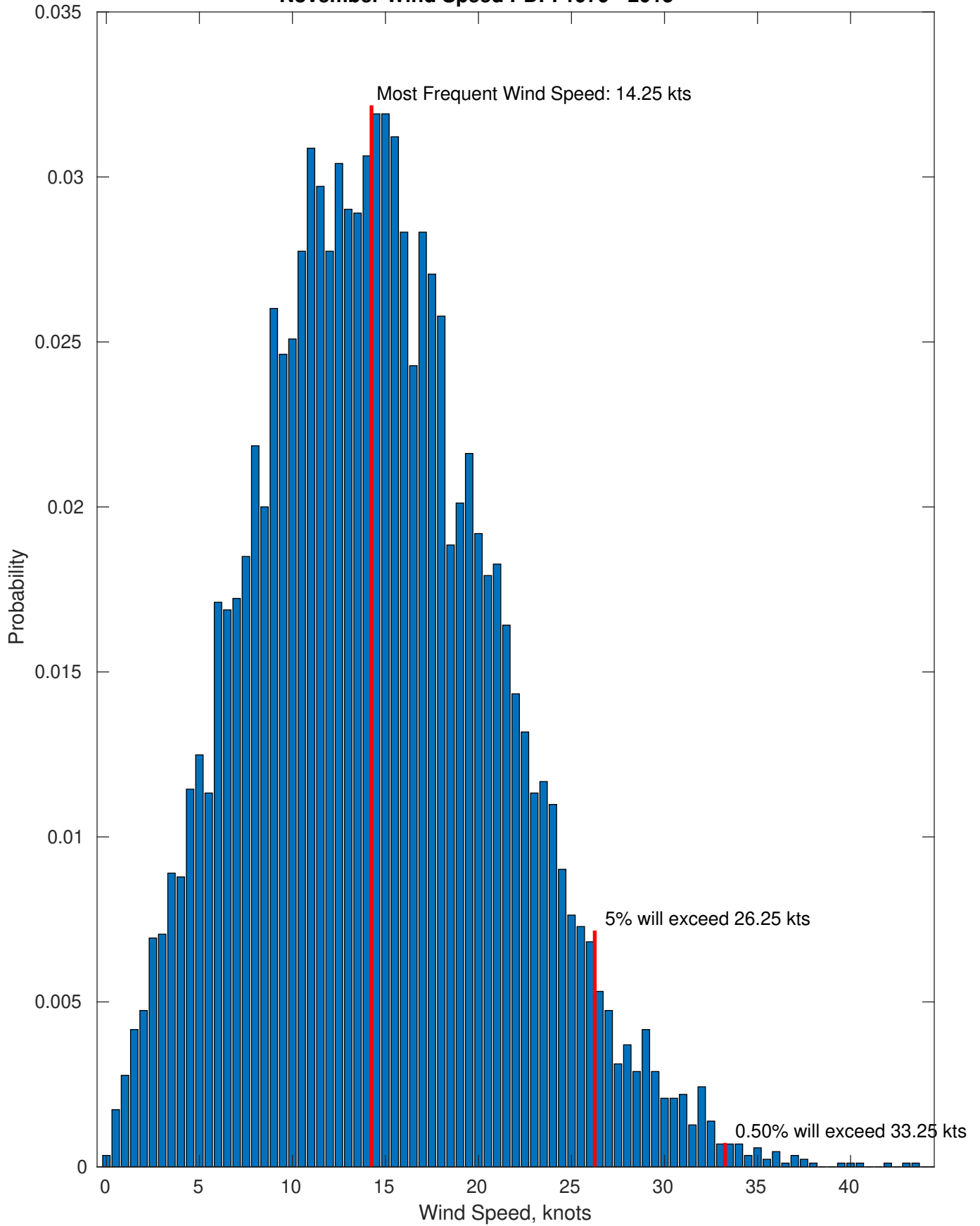
Wind-Sea: 33.91%



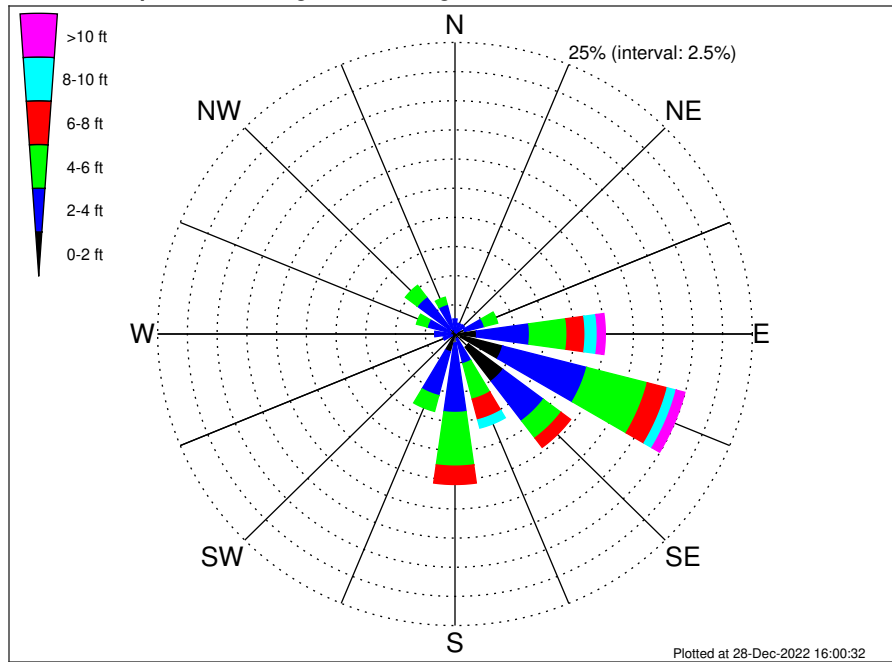
Swell: 66.09%



November Wind Speed PDF: 1979 - 2015



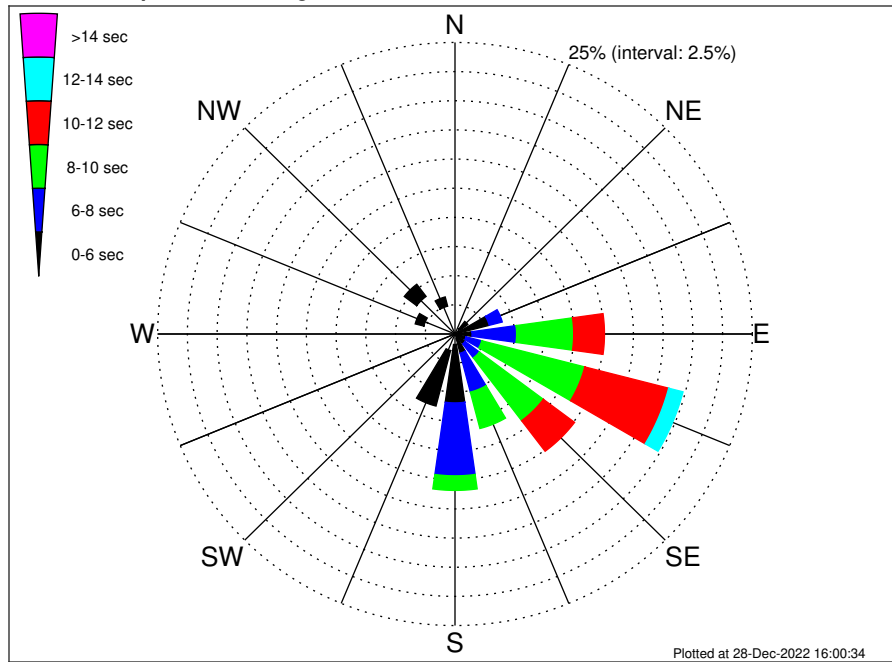
VNE 544 ECR2 Midpoint Climatological WaveHeight Rose for November: 1979 - 2015



Joint Frequency Distribution Table

	N	NNE	NE	ENE	E	ESE	SE	SSE	S	SSW	SW	WSW	W	WNW	NW	NNW	Total
calm	0.01	0.01	0.03	0.23	0.31	0.51	1.41	0.01	0.20	0.16	0.01	0.05	0.03	0.01	0.03	•	3.03
1 - 2 ft	0.20	0.16	0.10	0.60	1.50	3.63	3.65	0.40	0.58	1.41	0.27	0.22	0.43	0.37	0.55	0.40	14.49
2 - 4 ft	1.09	0.79	0.86	1.72	4.45	7.31	4.25	2.21	5.95	3.88	0.60	0.76	1.25	2.03	3.39	2.22	42.77
4 - 6 ft	0.21	0.21	0.31	1.16	3.16	5.26	1.85	3.14	4.60	1.40	0.07	0.12	0.40	0.94	1.25	0.64	24.71
6 - 8 ft	•	•	0.08	0.60	1.51	1.73	1.01	1.84	1.57	0.08	0.01	0.03	0.07	0.10	0.12	0.02	8.79
8 - 10 ft	•	•	•	0.05	1.03	0.77	0.62	0.73	0.43	•	•	•	•	•	•	•	3.63
10 - 12 ft	•	•	•	0.03	0.44	0.42	0.18	0.32	0.10	•	•	•	•	•	•	•	1.50
12 - 14 ft	•	•	•	0.01	0.20	0.17	0.18	0.17	0.02	•	•	•	•	•	•	•	0.76
14 - 16 ft	•	•	•	•	0.02	0.13	0.05	0.02	•	•	•	•	•	•	•	•	0.22
16 - 18 ft	•	•	•	•	0.01	0.02	0.02	0.01	•	•	•	•	•	•	•	•	0.07
> 18 ft	•	•	•	•	•	0.01	0.01	0.01	•	•	•	•	•	•	•	•	0.03
Total	1.50	1.17	1.39	4.41	12.64	19.97	13.25	8.88	13.46	6.94	0.96	1.18	2.19	3.46	5.34	3.28	100.00

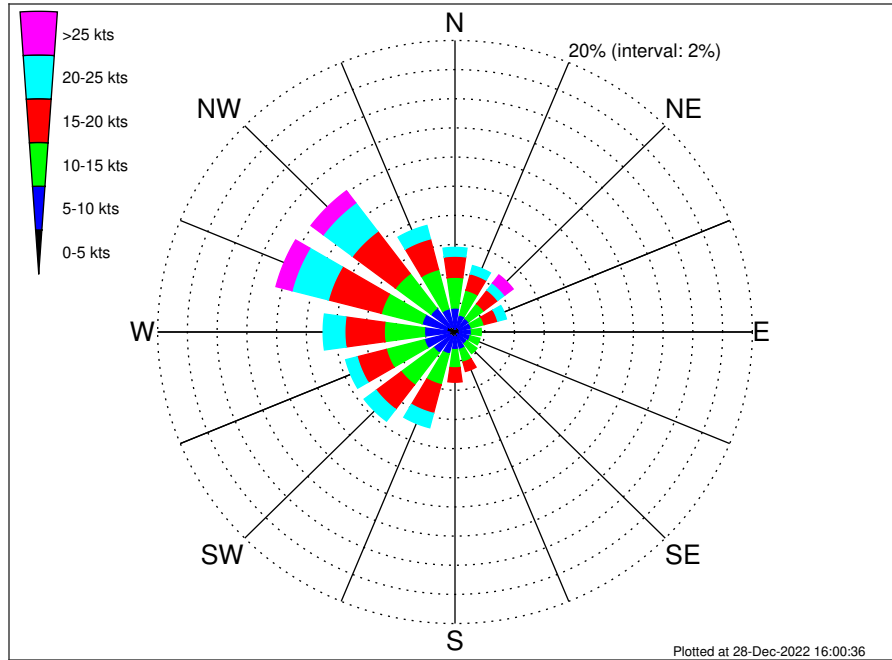
VNE 544 ECR2 Midpoint Climatological WavePeriod Rose for November: 1979 - 2015



Joint Frequency Distribution Table

	N	NNE	NE	ENE	E	ENE	SE	SSE	S	SSW	SW	WSW	W	WNW	NW	NNW	Total
calm	•	•	•	•	•	•	•	•	•	•	•	•	•	•	•	•	•
1 - 2 sec	•	0.01	•	•	•	•	•	0.01	•	0.01	•	0.01	0.01	0.01	•	•	0.07
2 - 4 sec	1.13	0.73	0.52	0.34	0.09	0.28	0.20	0.39	0.90	1.46	0.81	0.96	1.83	2.69	4.04	2.46	18.82
4 - 6 sec	0.37	0.43	0.83	2.64	1.34	0.68	0.87	1.29	5.01	4.91	0.15	0.21	0.35	0.75	1.31	0.82	21.96
6 - 8 sec	•	•	0.03	1.13	3.75	1.36	1.50	3.45	6.26	0.55	•	•	•	•	•	•	18.04
8 - 10 sec	•	•	•	0.30	4.80	8.95	6.74	3.23	1.25	•	•	•	•	•	•	•	25.26
10 - 12 sec	•	•	•	•	2.59	7.28	3.28	0.51	0.05	•	•	•	•	•	•	•	13.71
12 - 14 sec	•	•	•	•	0.07	1.25	0.57	•	•	•	•	•	•	•	•	•	1.88
14 - 16 sec	•	•	•	•	•	0.16	0.09	•	•	•	•	•	•	•	•	•	0.25
18 - 20 sec	•	•	•	•	•	•	•	•	•	•	•	•	•	•	•	•	•
22 - 24 sec	•	•	•	•	•	•	•	•	•	•	•	•	•	•	•	•	•
Total	1.50	1.17	1.39	4.41	12.64	19.97	13.25	8.88	13.46	6.94	0.96	1.18	2.19	3.46	5.34	3.28	100.00

VNE 544 ECR2 Midpoint Climatological Wind Rose for November: 1979 - 2015



Joint Frequency Distribution Table

	N	NNE	NE	ENE	E	ESE	SE	SSE	S	SSW	SW	WSW	W	WNW	NW	NNW	Total
calm	•	0.01	0.02	0.01	0.01	0.01	0.01	0.01	•	0.01	0.02	0.01	0.02	0.01	0.01	0.02	0.21
0 - 5 kts	0.21	0.36	0.32	0.31	0.29	0.31	0.17	0.38	0.30	0.37	0.32	0.43	0.35	0.57	0.45	0.34	5.48
5 - 10 kts	1.45	0.84	0.81	0.81	0.81	0.74	0.82	0.84	0.91	1.18	1.45	1.69	1.69	1.71	1.57	1.28	18.60
10 - 15 kts	2.10	1.75	1.27	0.89	0.66	0.67	0.84	0.90	1.25	2.17	2.74	2.65	2.71	2.83	2.98	2.79	29.21
15 - 20 kts	1.45	1.17	1.17	0.95	0.30	0.38	0.39	0.66	0.98	2.03	2.12	2.02	2.65	3.68	3.63	2.17	25.75
20 - 25 kts	0.60	0.58	0.60	0.60	0.31	0.17	0.32	0.35	0.49	1.02	1.01	0.80	1.46	2.53	2.45	0.95	14.23
25 - 30 kts	0.22	0.23	0.49	0.13	0.13	0.12	0.16	0.25	0.22	0.29	0.15	0.20	0.28	0.88	0.92	0.20	4.86
30 - 35 kts	0.08	0.16	0.17	0.13	0.05	0.05	0.02	0.05	0.08	0.08	0.02	0.02	0.09	0.23	0.10	0.05	1.39
35 - 40 kts	0.01	0.02	0.05	0.02	•	•	0.02	0.03	0.02	•	•	•	0.03	•	•	•	0.22
40 - 45 kts	•	•	•	0.02	•	•	•	0.02	0.01	•	•	•	•	•	•	•	0.06
45 - 50 kts	•	•	•	•	•	•	•	•	•	•	•	•	•	•	•	•	•
Total	6.12	5.12	4.90	3.87	2.56	2.45	2.77	3.50	4.27	7.16	7.83	7.82	9.27	12.44	12.13	7.79	100.00