

West Coast Ocean Wind OCS-P0564 - August

Latitude: 33.50 N Longitude: 122.00 W

Weather Days

Wave Height > 6.0 ft Mean: 15.5 days Range: 10.4 - 20.6 days p50:22.5 days p75:18 days p90:15 days

Wave Height > 7.0 ft Mean: 11.2 days Range: 6.1 - 16.4 days p50:15 days p75:10.5 days p90:8 days

Wave Height > 8.0 ft Mean: 7.2 days Range: 2.9 - 11.5 days p50:9 days p75:5.5 days p90:3.5 days

Wind Speed > 10.0 knots Mean: 23.6 days Range: 20.1 - 27.2 days p50:24 days p75:21.5 days p90:18 days

Wind Speed > 15.0 knots Mean: 14.9 days Range: 10.2 - 19.5 days p50:16 days p75:12.5 days p90:9.5 days

Wind Speed > 20.0 knots Mean: 4.9 days Range: 2.1 - 7.7 days p50:5 days p75:3 days p90:1.5 days

Working Window

Wave Height < 6.0 ft
A 1 day or longer window will statistically occur 2.4 times per month
A 2 day or longer window will statistically occur 1.5 times per month
A 3 day or longer window will statistically occur 0.9 times per month

Wave Height < 7.0 ft
A 1 day or longer window will statistically occur 3.5 times per month
A 2 day or longer window will statistically occur 2.7 times per month
A 3 day or longer window will statistically occur 2.0 times per month

Wave Height < 8.0 ft
A 1 day or longer window will statistically occur 3.9 times per month
A 2 day or longer window will statistically occur 3.0 times per month
A 3 day or longer window will statistically occur 2.5 times per month

Waves

Mean Height: 6 - 8 ft

The wave heights will occasionally reach 12 - 14 ft, but rarely higher.

Mean Period: 8 - 10 sec

The wave periods will occasionally reach 22 - 24 sec, but rarely longer.

Principle Direction, from: NNW

WindSea/Swell: 23% / 77%

Winds

Mean Speed: 10 - 15 kts

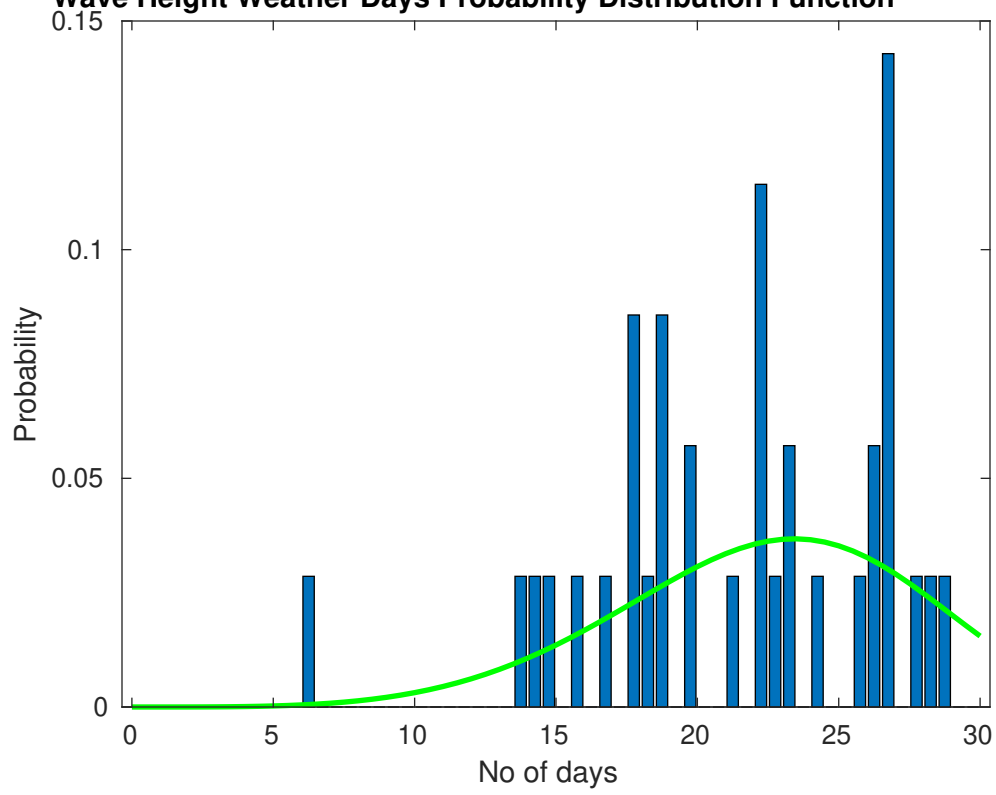
The winds will occasionally reach 25 - 30 kts, but rarely greater.

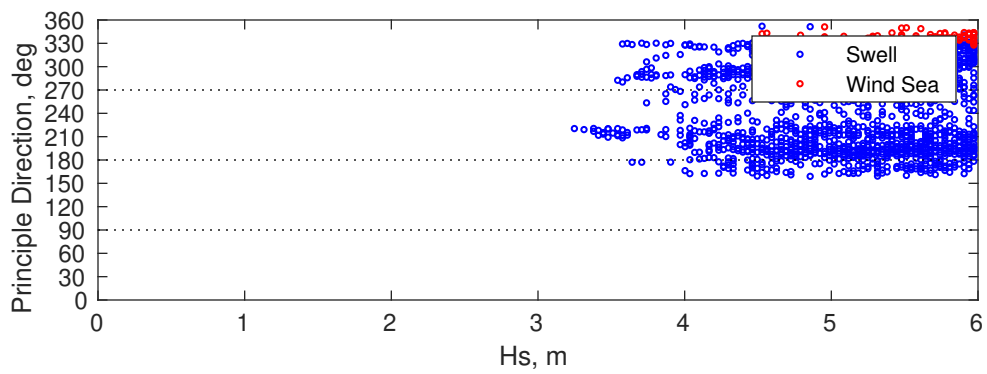
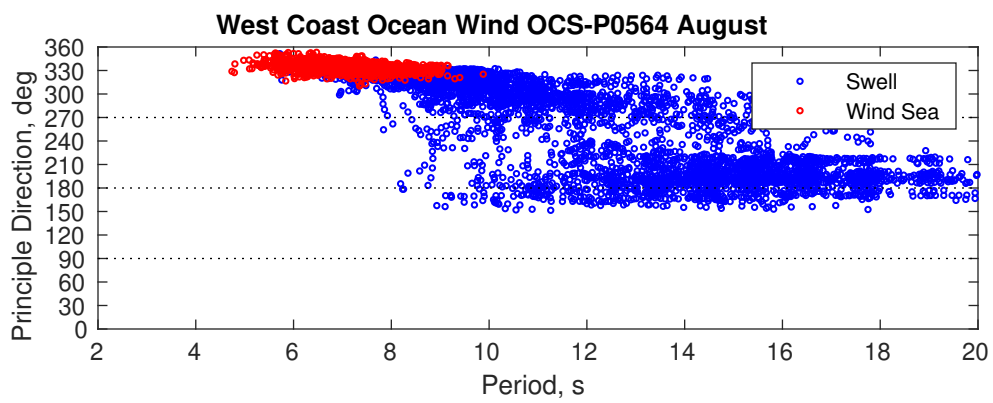
Principle Direction, from: NNW

Severe Storms

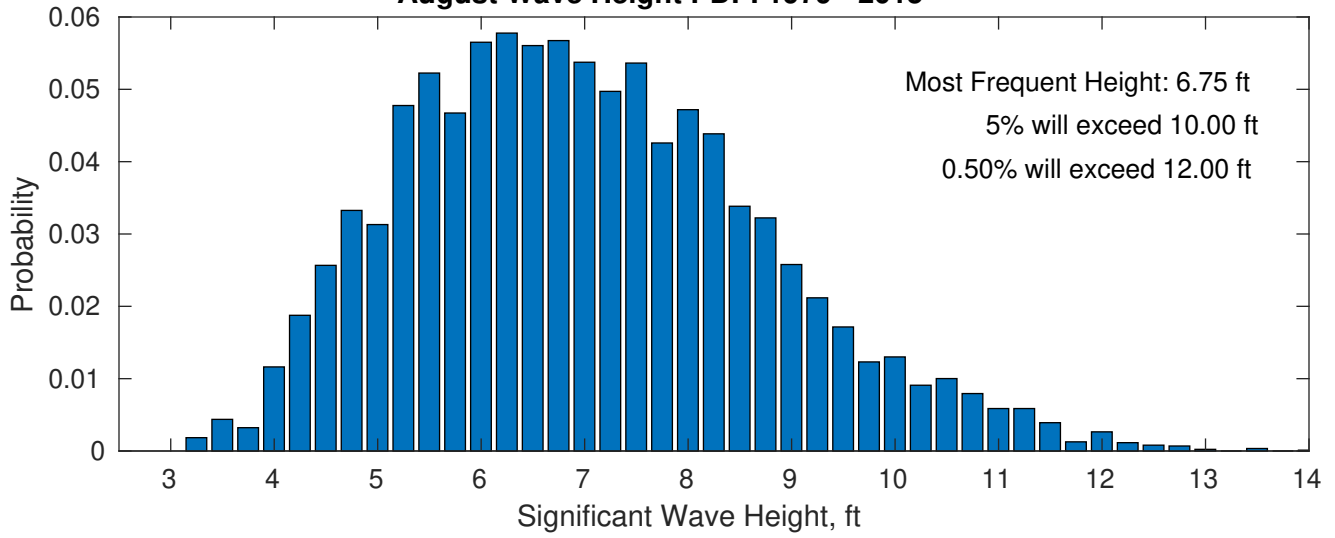
Severe storms with gale force winds and extreme waves are not expected during this month.

Wave Height Weather Days Probability Distribution Function

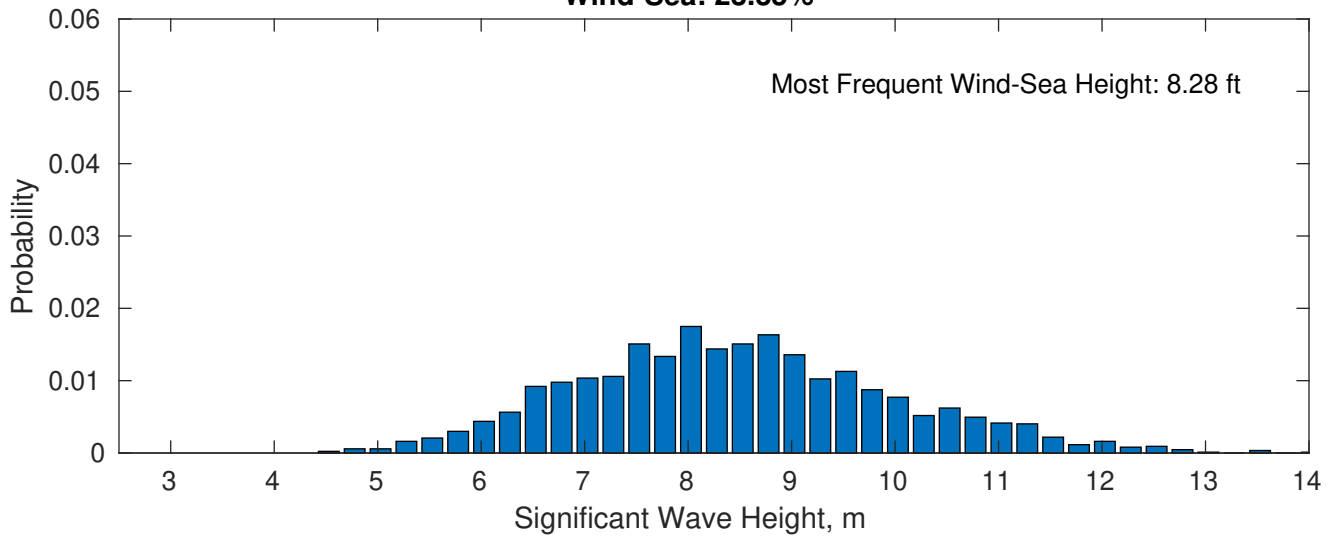




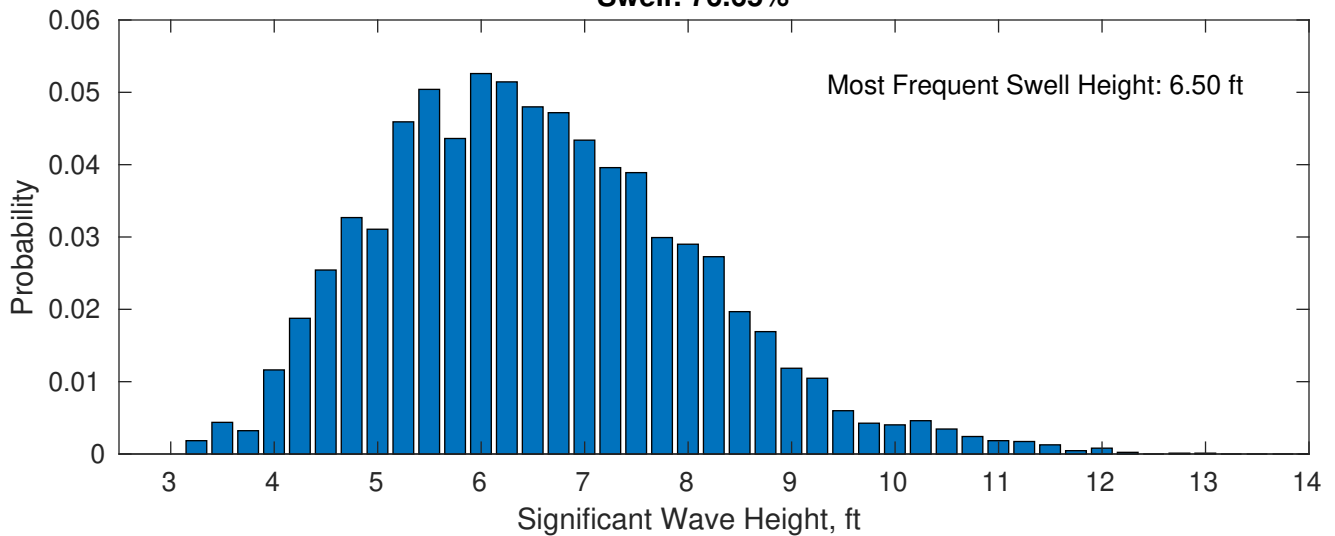
August Wave Height PDF: 1979 - 2015



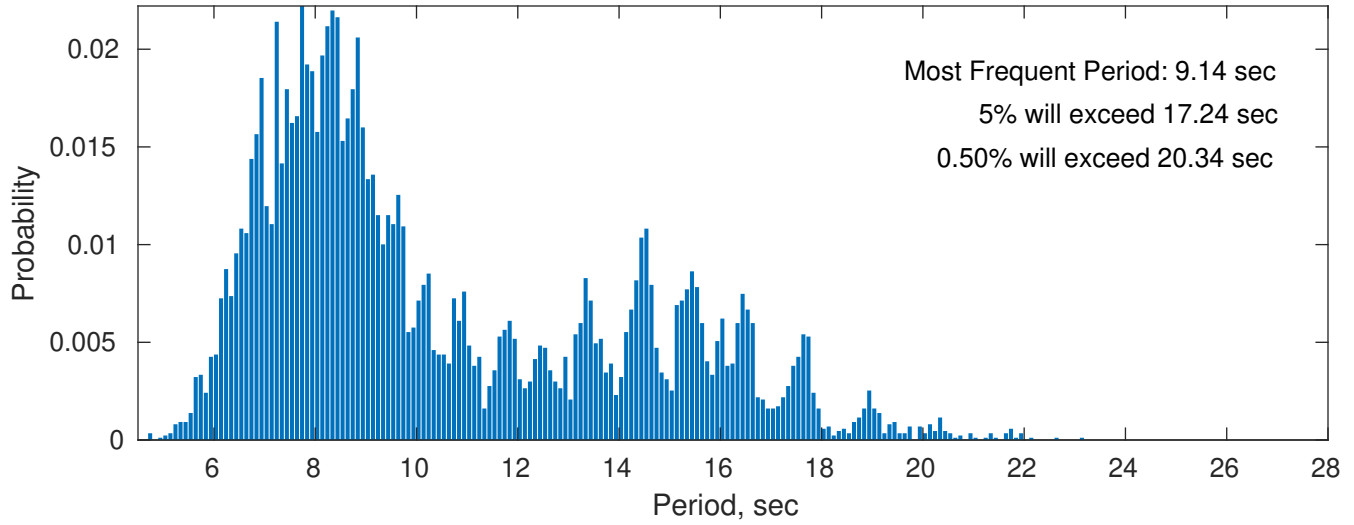
Wind-Sea: 23.35%



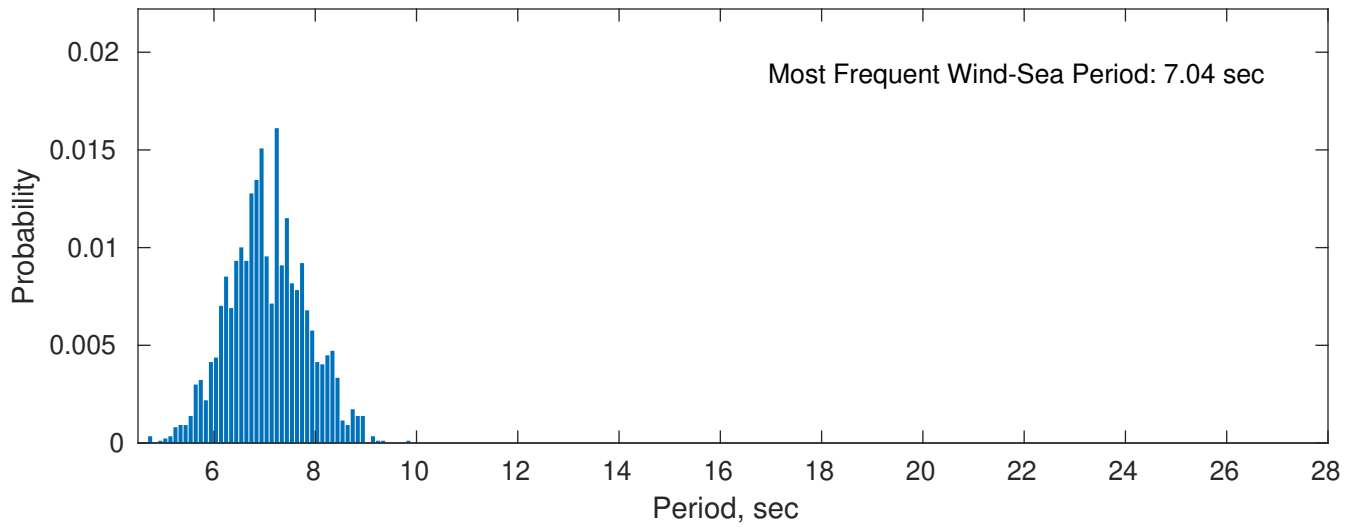
Swell: 76.65%



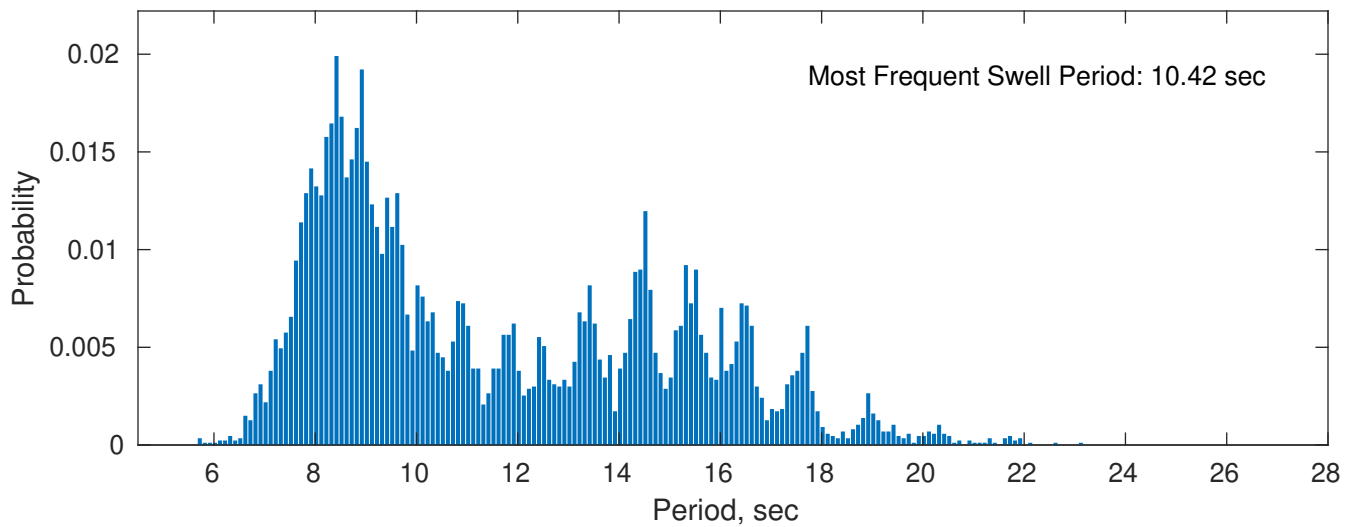
August Peak Wave Period PDF: 1979 - 2015



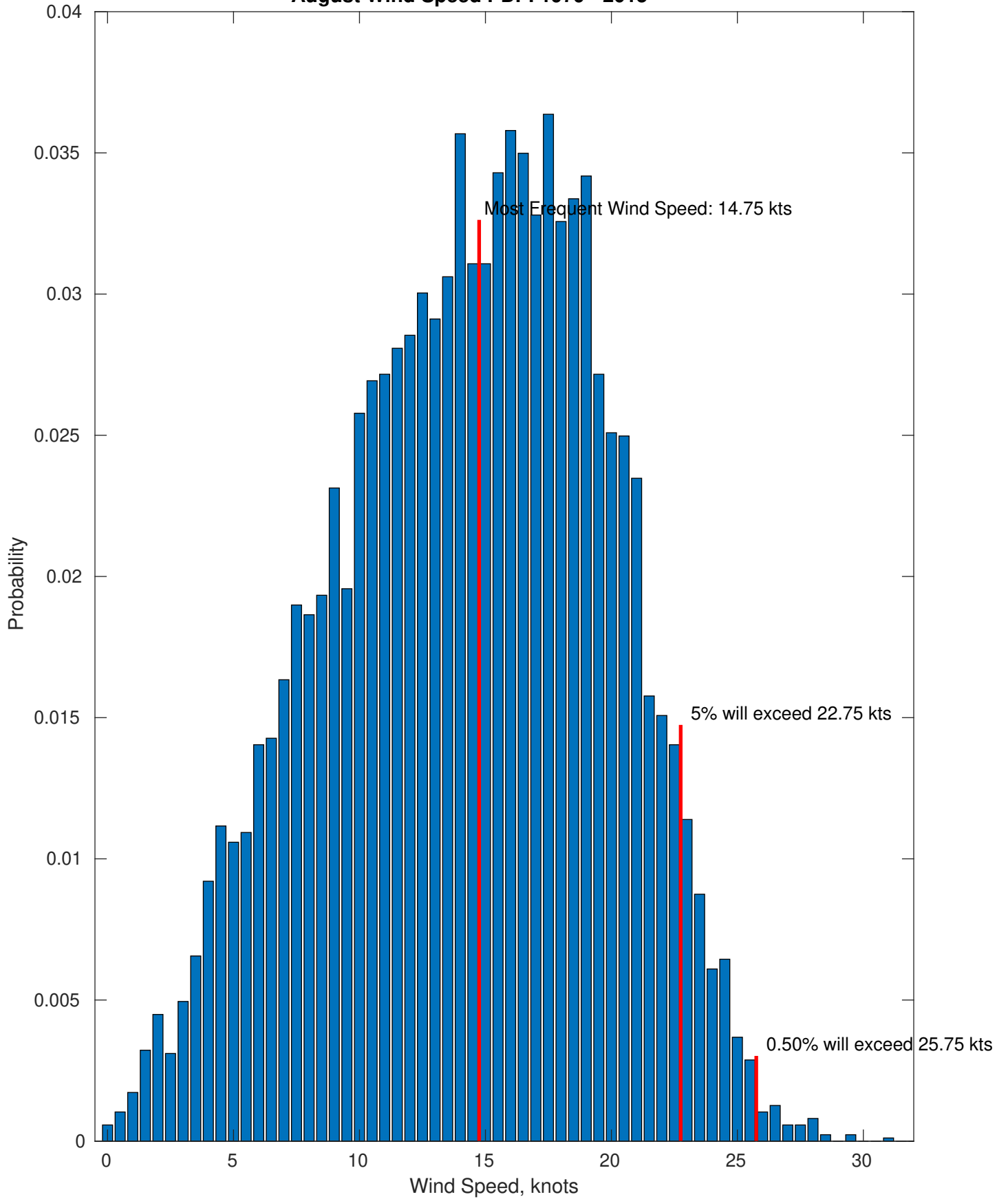
Wind-Sea: 23.35%



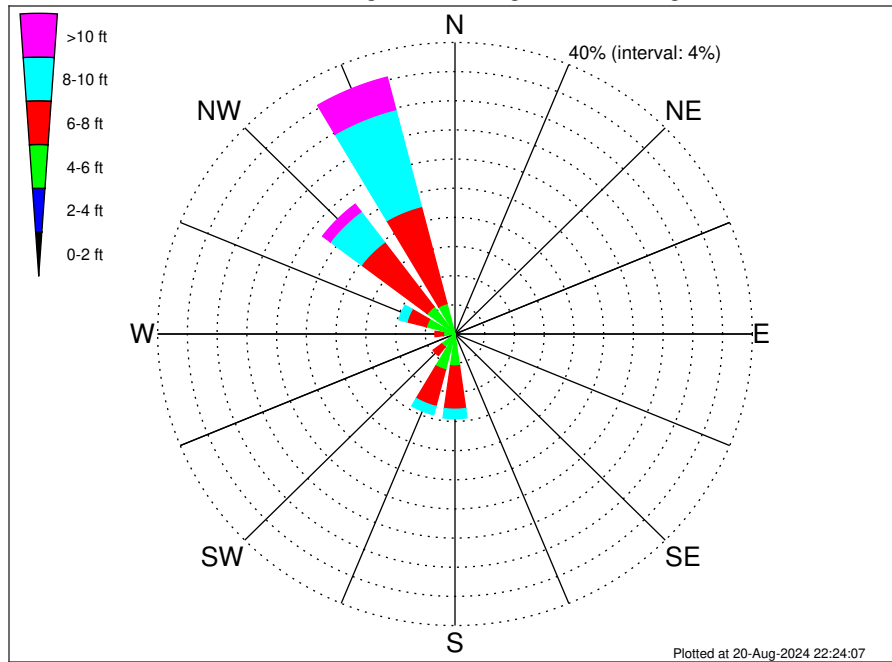
Swell: 76.65%



August Wind Speed PDF: 1979 - 2015



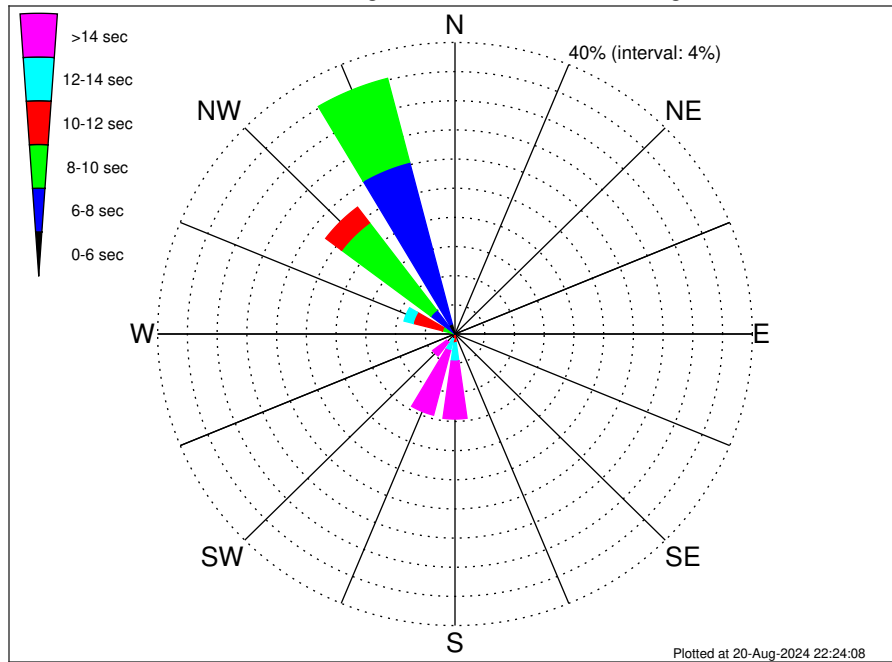
West Coast Ocean Wind OCS-P0564 Climatological WaveHeight Rose for August: 1979 - 2015



Joint Frequency Distribution Table

	N	NNE	NE	ENE	E	ESE	SE	SSE	S	SSW	SW	WSW	W	WNW	NW	NNW	Total
calm
1 - 2 ft
2 - 4 ft	0.03	0.16	0.29	0.03	0.06	0.20	0.05	0.13	0.94
4 - 6 ft	0.07	0.56	4.36	4.91	1.96	0.78	1.50	3.77	4.63	4.19	26.73
6 - 8 ft	0.16	0.67	5.93	5.19	1.45	0.58	1.15	2.70	11.09	13.75	42.67
8 - 10 ft	0.01	0.44	1.29	1.19	0.05	0.08	0.20	1.12	5.25	13.74	23.35
10 - 12 ft	0.10	0.06	0.05	0.02	0.02	.	0.07	1.27	4.11	5.70
12 - 14 ft	0.03	.	0.01	0.01	0.02	.	.	0.02	0.48	0.59
14 - 16 ft	0.01	0.01
16 - 18 ft
> 18 ft
Total	0.24	1.81	11.67	11.51	3.77	1.52	2.90	7.86	22.30	36.41	100.00

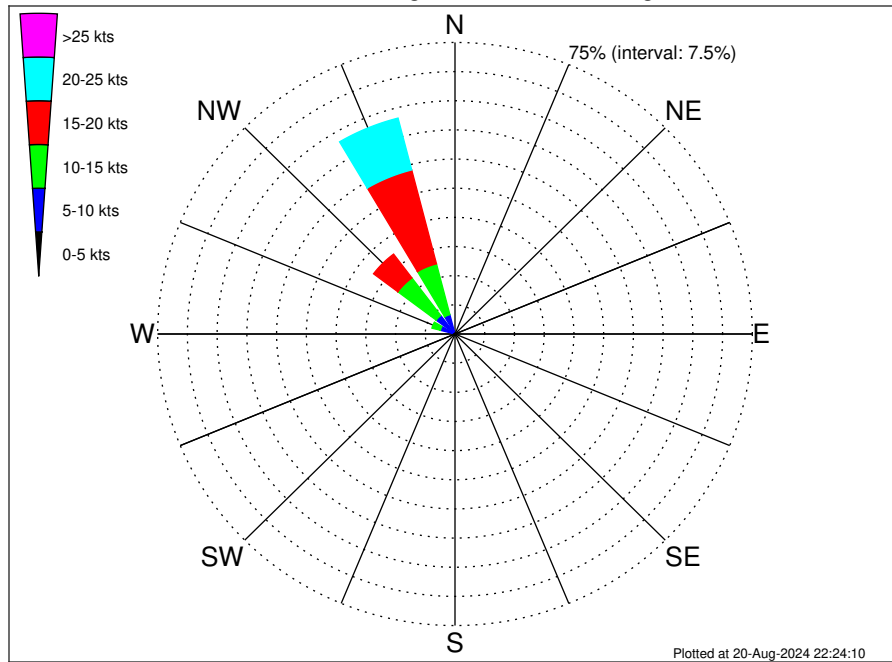
West Coast Ocean Wind OCS-P0564 Climatological WavePeriod Rose for August: 1979 - 2015



Joint Frequency Distribution Table

	N	NNE	NE	ENE	E	ESE	SE	SSE	S	SSW	SW	WSW	W	WNW	NW	NNW	Total
calm	•	•	•	•	•	•	•	•	•	•	•	•	•	•	•	•	•
1 - 2 sec	•	•	•	•	•	•	•	•	•	•	•	•	•	•	•	•	•
2 - 4 sec	•	•	•	•	•	•	•	•	•	•	•	•	•	•	•	•	•
4 - 6 sec	0.17	•	•	•	•	•	•	•	•	•	•	•	•	•	0.05	1.44	1.66
6 - 8 sec	0.07	•	•	•	•	•	•	•	•	•	•	0.01	0.02	0.08	4.04	22.93	27.15
8 - 10 sec	•	•	•	•	•	•	•	0.07	0.22	0.15	0.08	0.29	0.33	1.67	15.02	11.87	29.69
10 - 12 sec	•	•	•	•	•	•	•	0.36	1.01	0.54	0.35	0.35	0.99	4.09	2.68	0.18	10.54
12 - 14 sec	•	•	•	•	•	•	•	0.51	2.50	1.70	0.98	0.30	0.85	1.25	0.46	•	8.55
14 - 16 sec	•	•	•	•	•	•	•	0.64	3.98	4.85	1.15	0.40	0.58	0.52	0.06	•	12.18
18 - 20 sec	•	•	•	•	•	•	•	0.20	2.89	3.21	1.02	0.17	0.13	0.25	•	•	7.87
22 - 24 sec	•	•	•	•	•	•	•	0.03	1.07	1.06	0.20	•	•	•	•	•	2.36
Total	0.24	•	•	•	•	•	•	1.81	11.67	11.51	3.77	1.52	2.90	7.86	22.30	36.41	100.00

West Coast Ocean Wind OCS-P0564 Climatological Wind Rose for August: 1979 - 2015



Joint Frequency Distribution Table

	N	NNE	NE	ENE	E	ESE	SE	SSE	S	SSW	SW	WSW	W	WNW	NW	NNW	Total
calm	0.02	•	0.02	0.01	•	•	0.01	0.01	•	•	0.02	0.01	0.02	•	0.02	•	0.16
0 - 5 kts	0.26	0.15	0.13	0.06	0.13	0.08	0.12	0.06	0.10	0.18	0.33	0.30	0.58	0.70	0.62	0.64	4.44
5 - 10 kts	0.94	0.15	0.12	0.08	0.03	0.06	0.03	0.05	0.09	0.20	0.25	0.49	1.17	3.11	5.31	4.50	16.58
10 - 15 kts	1.06	0.03	0.01	0.01	0.02	•	•	•	•	0.01	0.02	0.02	0.28	2.21	12.12	13.50	29.30
15 - 20 kts	0.56	0.01	•	•	•	•	•	•	•	•	•	•	0.01	0.06	7.66	24.95	33.26
20 - 25 kts	0.17	•	•	•	•	•	•	•	•	•	•	•	•	•	1.16	13.78	15.11
25 - 30 kts	0.01	•	•	•	•	•	•	•	•	•	•	•	•	•	0.03	1.08	1.13
30 - 35 kts	•	•	•	•	•	•	•	•	•	•	•	•	•	•	•	0.01	0.01
35 - 40 kts	•	•	•	•	•	•	•	•	•	•	•	•	•	•	•	•	•
40 - 45 kts	•	•	•	•	•	•	•	•	•	•	•	•	•	•	•	•	•
45 - 50 kts	•	•	•	•	•	•	•	•	•	•	•	•	•	•	•	•	•
Total	3.04	0.35	0.28	0.16	0.18	0.14	0.16	0.12	0.20	0.39	0.63	0.83	2.06	6.08	26.93	58.46	100.00