

West Coast Ocean Wind OCS-P0564 - May

Latitude: 33.50 N Longitude: 122.00 W

Weather Days

Wave Height > 6.0 ft Mean: 19.9 days Range: 16.6 - 23.3 days p50:26.5 days p75:23.5 days p90:20.5 days

Wave Height > 7.0 ft Mean: 17.1 days Range: 12.7 - 21.4 days p50:22.5 days p75:19 days p90:16 days

Wave Height > 8.0 ft Mean: 13.6 days Range: 8.9 - 18.4 days p50:18.5 days p75:14 days p90:12.5 days

Wind Speed > 10.0 knots Mean: 25.3 days Range: 22.4 - 28.2 days p50:26.5 days p75:24.5 days p90:21.5 days

Wind Speed > 15.0 knots Mean: 19.3 days Range: 15.7 - 22.8 days p50:19 days p75:17.5 days p90:15.5 days

Wind Speed > 20.0 knots Mean: 10.5 days Range: 6.6 - 14.5 days p50:10 days p75:7.5 days p90:6.5 days

Working Window

Wave Height < 6.0 ft
A 1 day or longer window will statistically occur 1.7 times per month
A 2 day or longer window will statistically occur 0.6 times per month
A 3 day or longer window will statistically occur 0.3 times per month

Wave Height < 7.0 ft
A 1 day or longer window will statistically occur 2.6 times per month
A 2 day or longer window will statistically occur 1.5 times per month
A 3 day or longer window will statistically occur 0.8 times per month

Wave Height < 8.0 ft
A 1 day or longer window will statistically occur 3.8 times per month
A 2 day or longer window will statistically occur 2.3 times per month
A 3 day or longer window will statistically occur 1.5 times per month

Waves

Mean Height: 8 - 10 ft

The wave heights will occasionally reach 14 - 16 ft, but rarely higher.

Mean Period: 10 - 12 sec

The wave periods will occasionally reach 22 - 24 sec, but rarely longer.

Principle Direction, from: NW

WindSea/Swell: 28% / 72%

Winds

Mean Speed: 15 - 20 kts

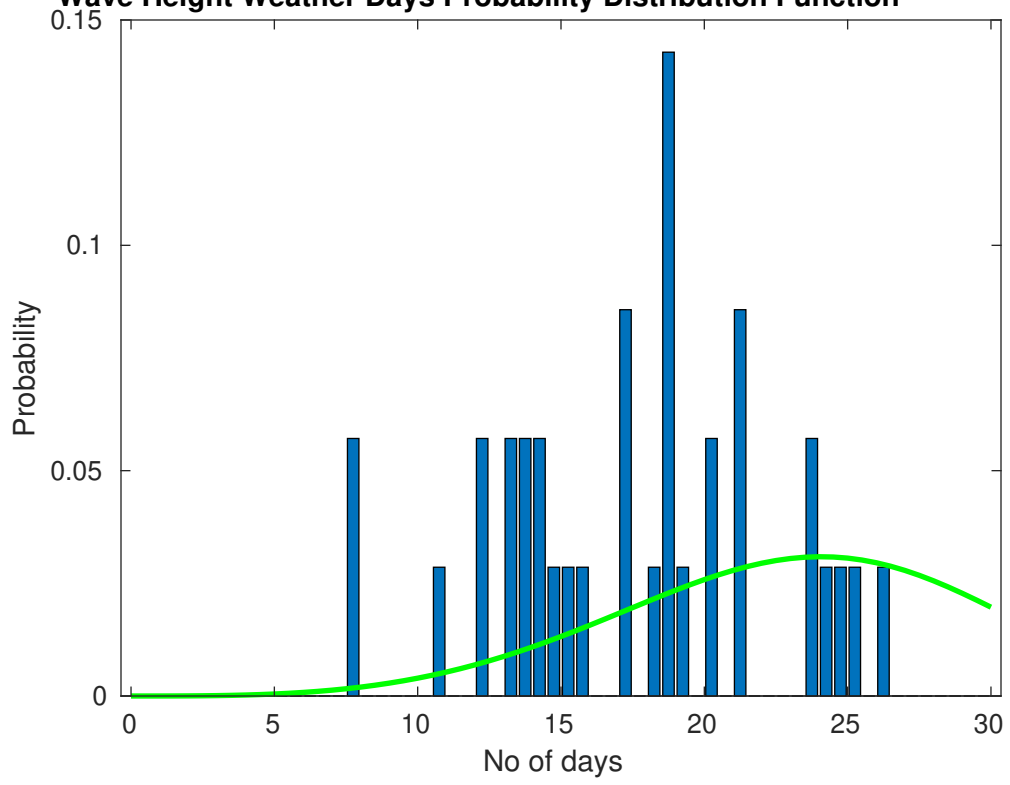
The winds will occasionally reach 30 - 35 kts, but rarely greater.

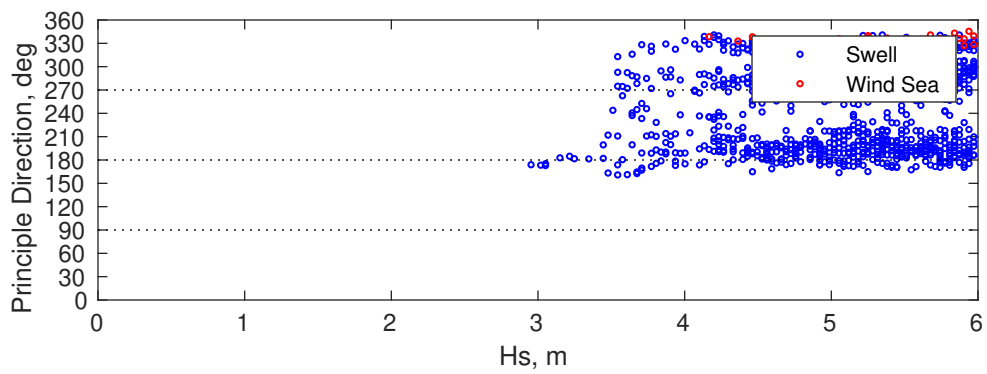
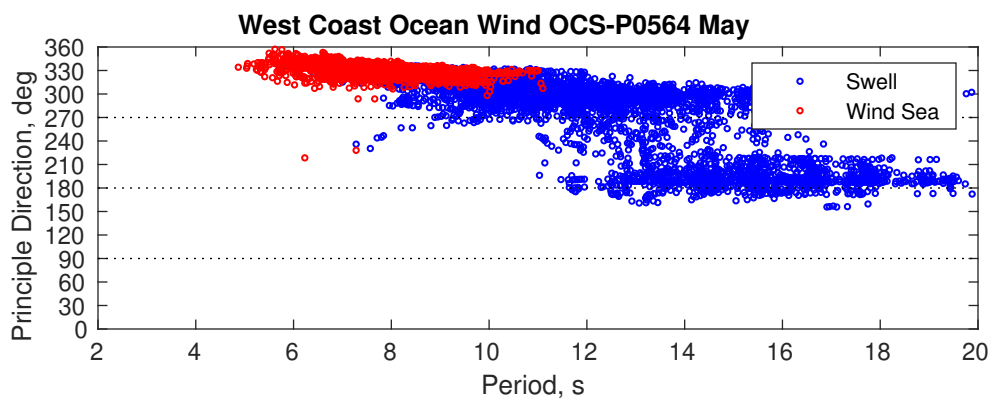
Principle Direction, from: NNW

Severe Storms

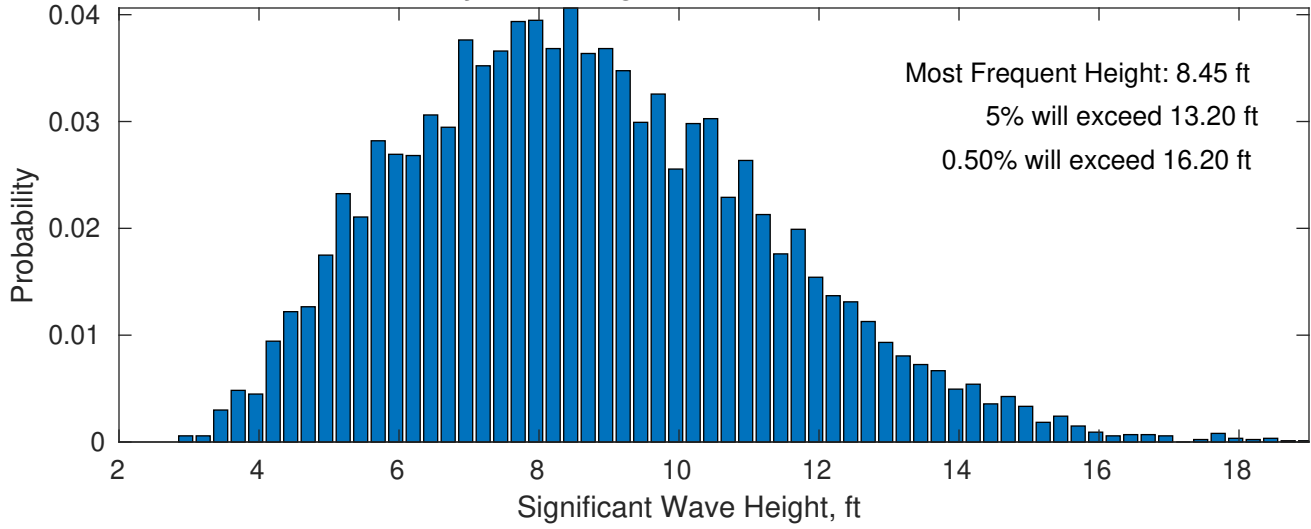
Severe storms with gale force winds and extreme waves are not expected during this month.

Wave Height Weather Days Probability Distribution Function

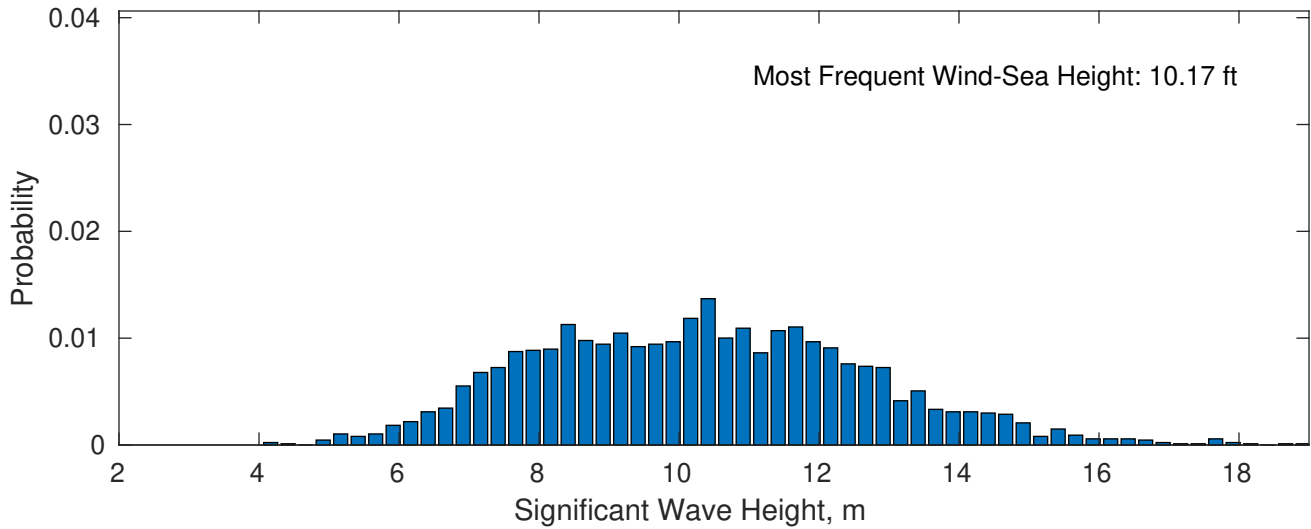




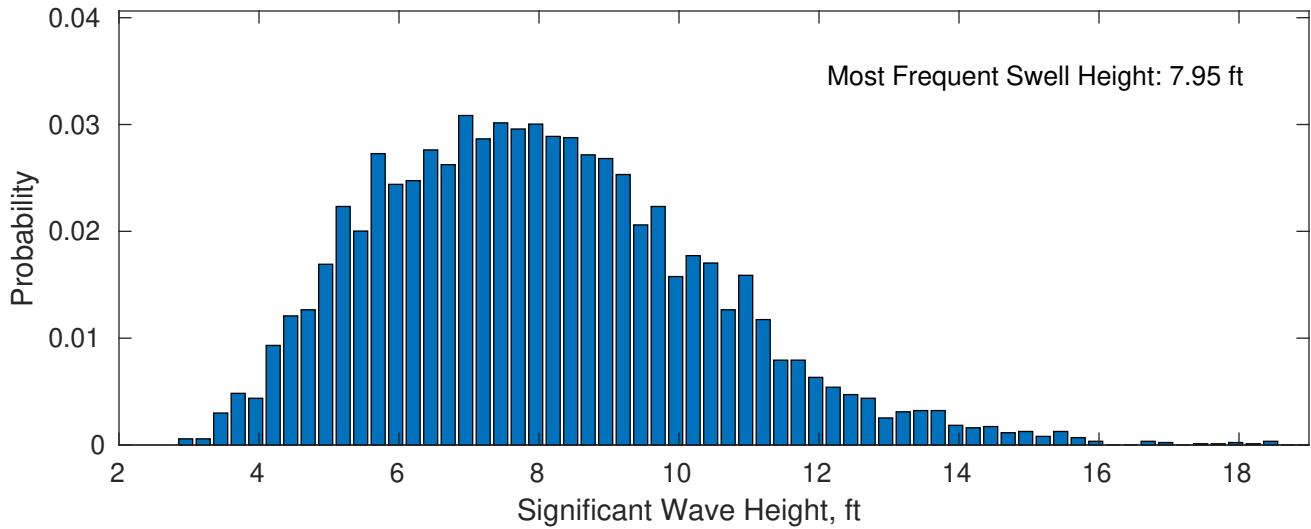
May Wave Height PDF: 1979 - 2015



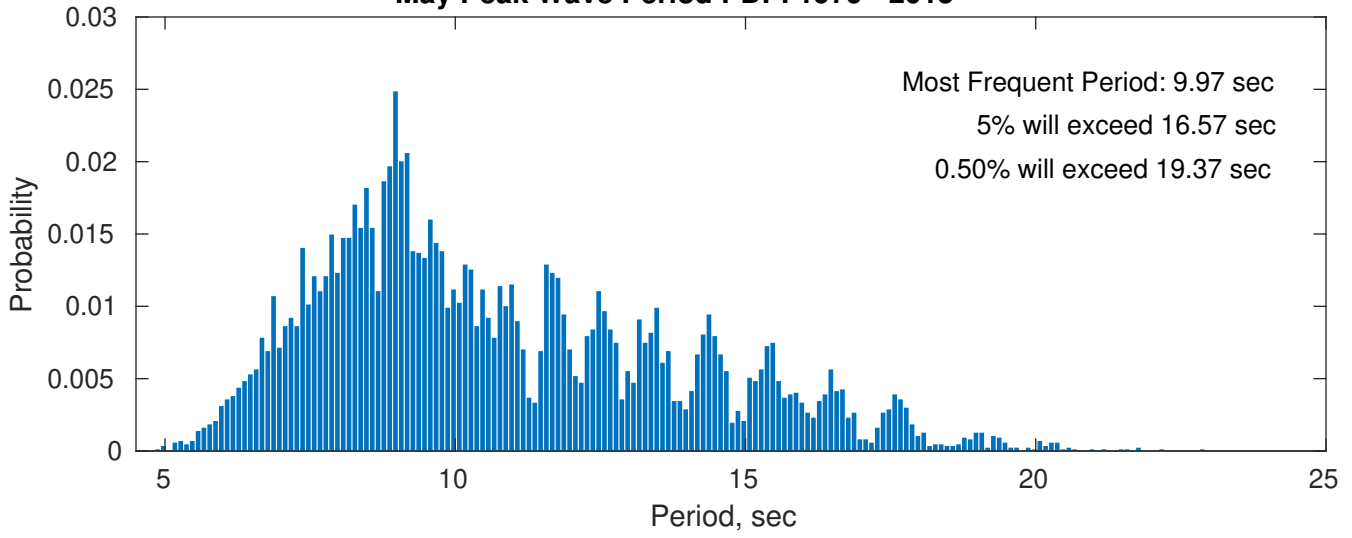
Wind-Sea: 28.21%



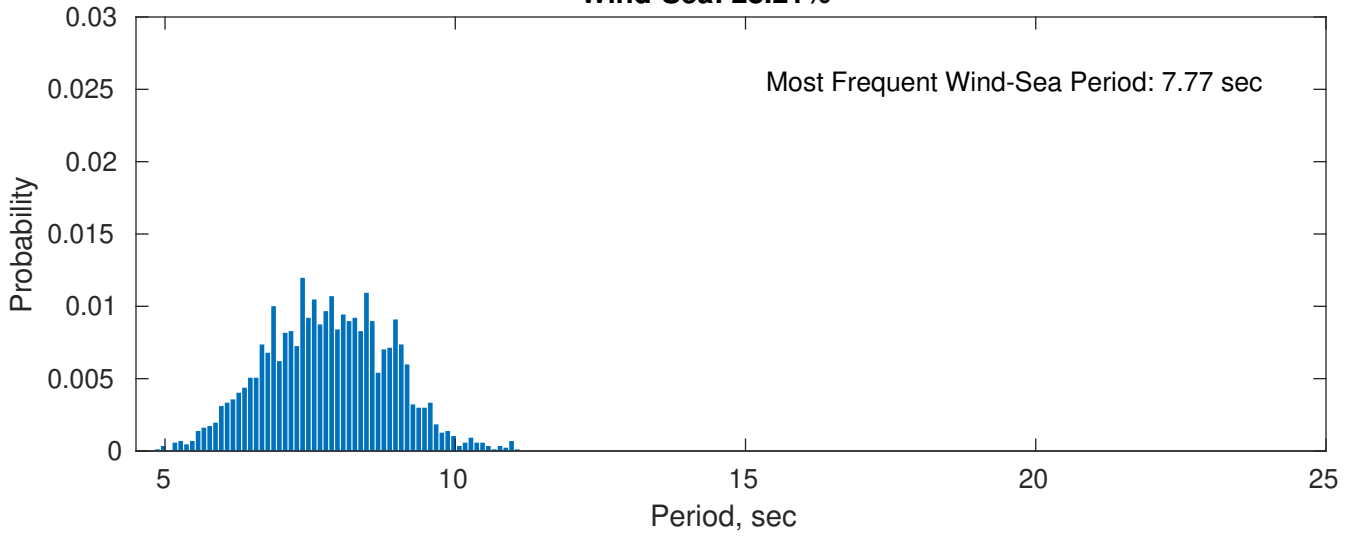
Swell: 71.79%



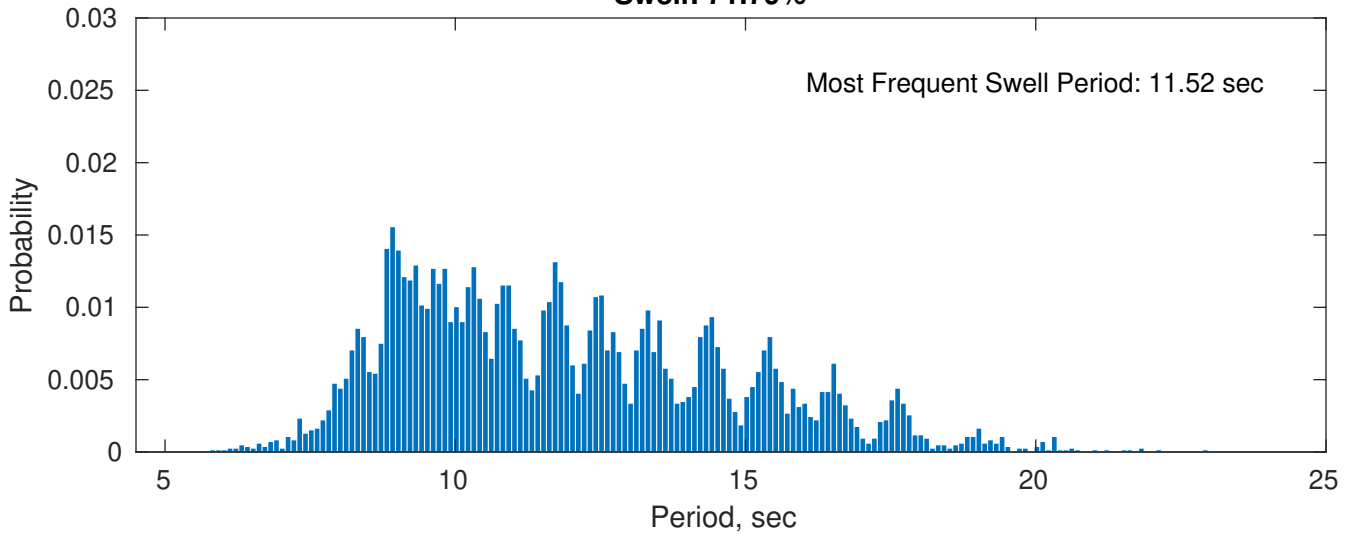
May Peak Wave Period PDF: 1979 - 2015



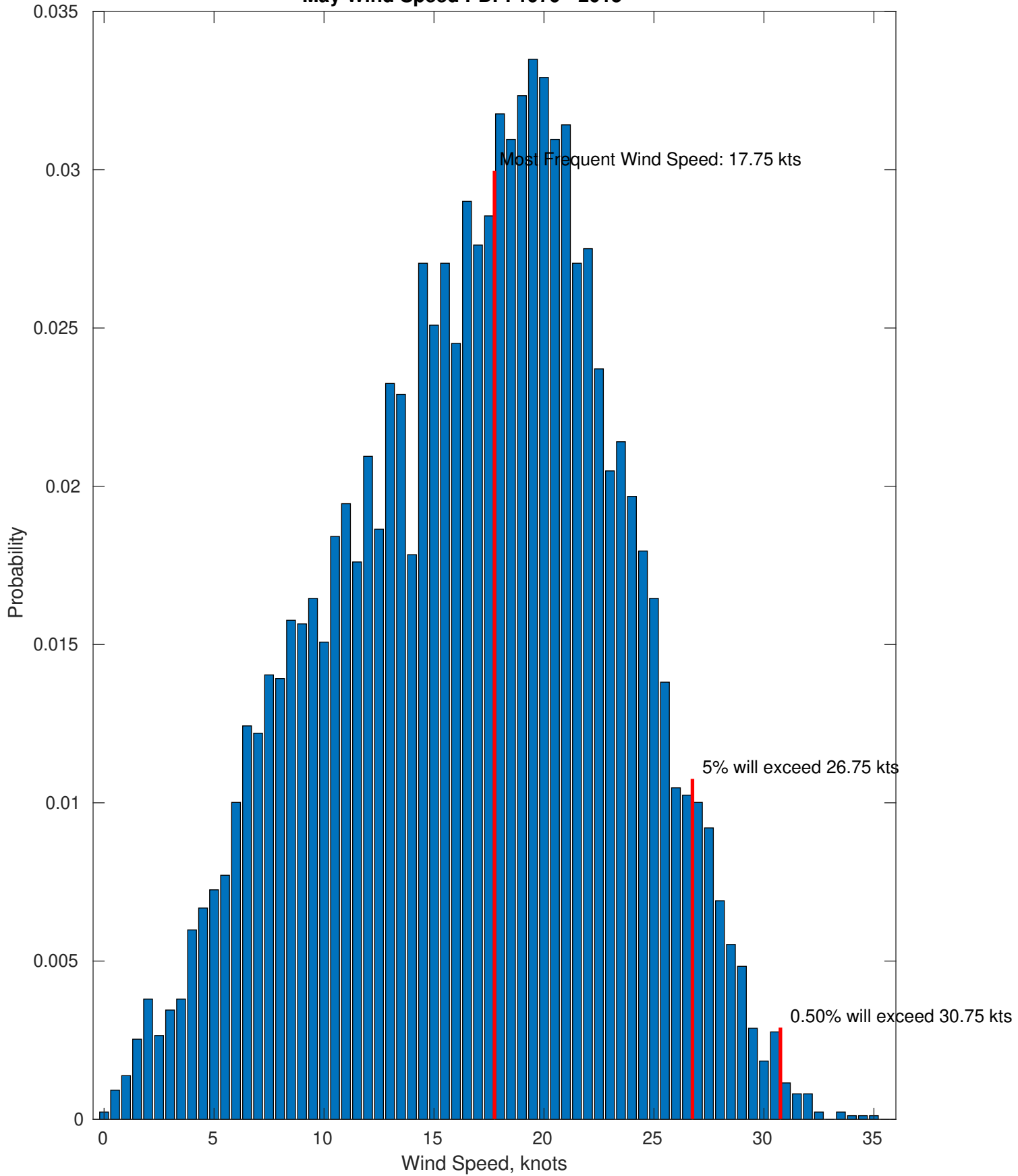
Wind-Sea: 28.21%



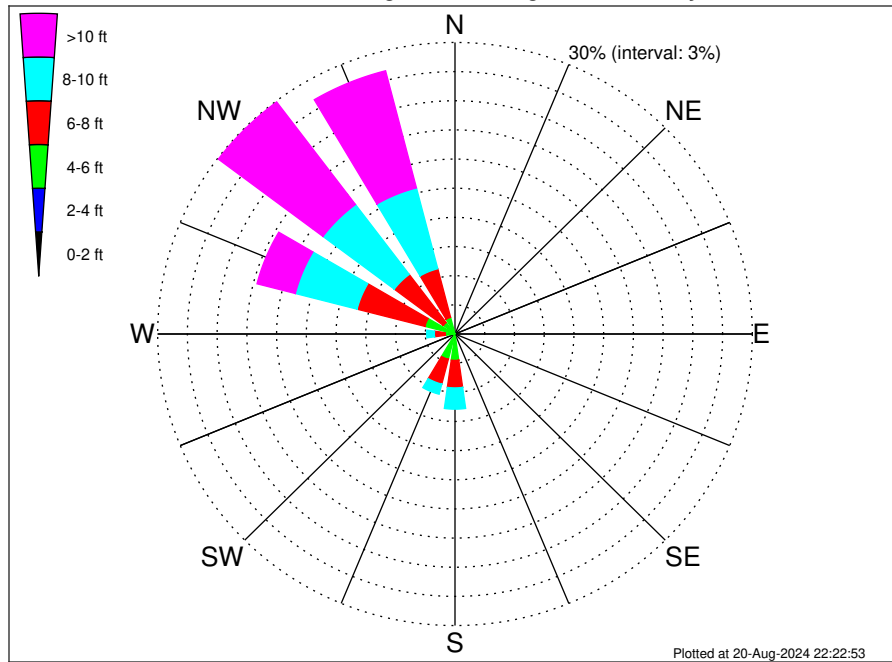
Swell: 71.79%



May Wind Speed PDF: 1979 - 2015



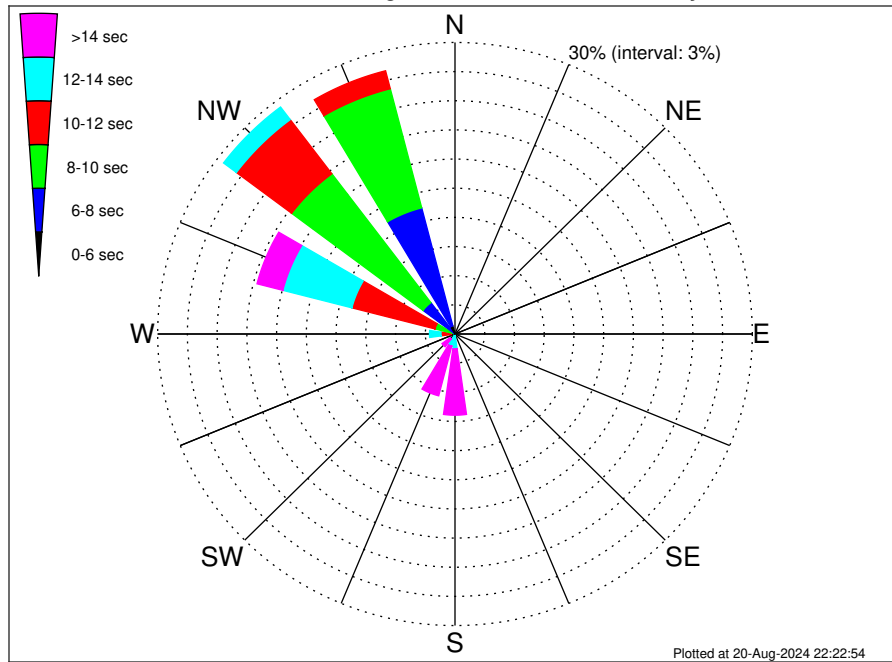
West Coast Ocean Wind OCS-P0564 Climatological WaveHeight Rose for May: 1979 - 2015



Joint Frequency Distribution Table

	N	NNE	NE	ENE	E	ESE	SE	SSE	S	SSW	SW	WSW	W	WNW	NW	NNW	Total
calm	•	•	•	•	•	•	•	•	•	•	•	•	•	•	•	•	•
1 - 2 ft	•	•	•	•	•	•	•	•	•	•	•	•	•	•	•	•	•
2 - 4 ft	•	•	•	•	•	•	•	0.07	0.31	0.14	0.03	0.09	0.08	0.13	0.05	0.03	0.93
4 - 6 ft	•	•	•	•	•	•	•	0.06	2.41	2.54	0.70	0.38	0.90	3.02	1.43	1.74	13.17
6 - 8 ft	0.17	•	•	•	•	•	•	0.10	2.83	2.65	0.66	0.54	1.10	7.07	6.20	5.17	26.49
8 - 10 ft	0.03	•	•	•	•	•	•	•	2.19	1.07	0.23	0.18	0.77	6.43	9.01	8.59	28.51
10 - 12 ft	•	•	•	•	•	•	•	•	0.56	0.16	0.02	0.07	0.26	2.82	7.81	7.54	19.25
12 - 14 ft	•	•	•	•	•	•	•	•	0.06	0.01	•	•	0.09	0.93	3.79	3.42	8.30
14 - 16 ft	•	•	•	•	•	•	•	•	•	•	•	•	•	0.24	1.34	1.15	2.73
16 - 18 ft	•	•	•	•	•	•	•	•	•	•	•	•	•	•	0.22	0.21	0.43
> 18 ft	•	•	•	•	•	•	•	•	•	•	•	•	•	•	0.06	0.14	0.20
Total	0.21	•	•	•	•	•	•	0.23	8.36	6.57	1.65	1.27	3.21	20.64	29.90	27.98	100.00

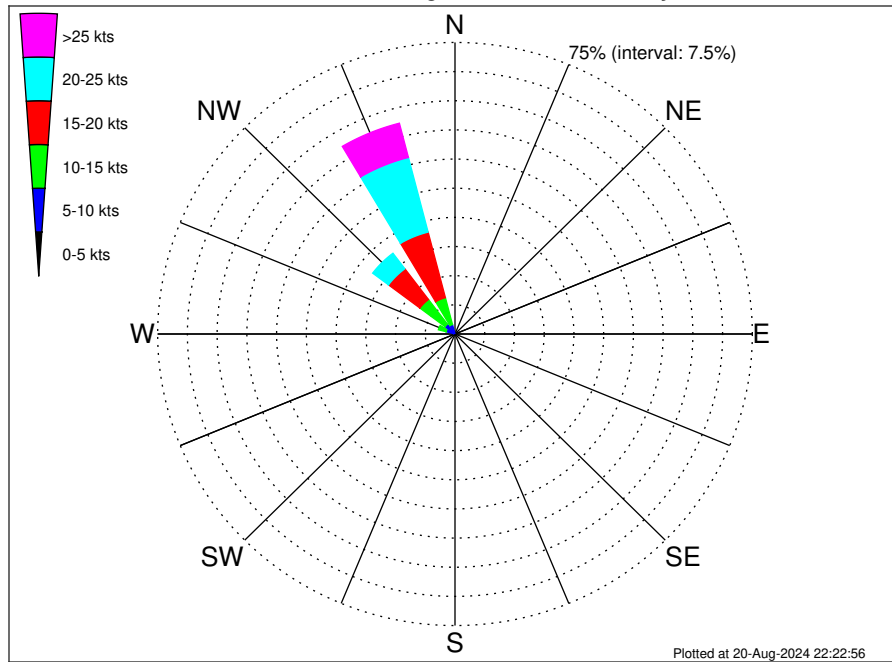
West Coast Ocean Wind OCS-P0564 Climatological WavePeriod Rose for May: 1979 - 2015



Joint Frequency Distribution Table

	N	NNE	NE	ENE	E	ESE	SE	SSE	S	SSW	SW	WSW	W	WNW	NW	NNW	Total
calm	•	•	•	•	•	•	•	•	•	•	•	•	•	•	•	•	•
1 - 2 sec	•	•	•	•	•	•	•	•	•	•	•	•	•	•	•	•	•
2 - 4 sec	•	•	•	•	•	•	•	•	•	•	•	•	•	•	•	•	•
4 - 6 sec	0.14	•	•	•	•	•	•	•	•	•	•	•	•	•	0.07	0.86	1.07
6 - 8 sec	0.07	•	•	•	•	•	•	•	•	•	0.05	0.03	•	0.06	3.97	12.54	16.72
8 - 10 sec	•	•	•	•	•	•	•	•	•	•	•	0.02	0.39	2.03	16.61	12.66	31.71
10 - 12 sec	•	•	•	•	•	•	•	•	0.22	0.06	0.10	0.21	1.02	8.67	6.97	1.91	19.16
12 - 14 sec	•	•	•	•	•	•	•	0.09	1.31	1.23	0.48	0.62	1.16	7.19	1.62	•	13.72
14 - 16 sec	•	•	•	•	•	•	•	0.07	3.60	2.81	0.58	0.35	0.54	2.04	0.52	•	10.50
18 - 20 sec	•	•	•	•	•	•	•	0.07	2.36	1.99	0.37	0.03	0.09	0.52	0.13	•	5.56
22 - 24 sec	•	•	•	•	•	•	•	•	0.86	0.48	0.07	•	•	0.14	0.01	•	1.57
Total	0.21	•	•	•	•	•	•	0.23	8.36	6.57	1.65	1.27	3.21	20.64	29.90	27.98	100.00

West Coast Ocean Wind OCS-P0564 Climatological Wind Rose for May: 1979 - 2015



Joint Frequency Distribution Table

	N	NNE	NE	ENE	E	ESE	SE	SSE	S	SSW	SW	WSW	W	WNW	NW	NNW	Total
calm	•	0.01	•	0.02	0.01	•	•	0.01	•	0.01	0.01	•	•	0.02	0.01	•	0.12
0 - 5 kts	0.22	0.10	0.13	0.03	0.06	0.07	0.06	0.12	0.23	0.14	0.23	0.35	0.36	0.35	0.37	0.23	3.03
5 - 10 kts	0.69	0.26	0.14	0.08	0.08	0.05	0.07	0.20	0.33	0.63	0.60	0.98	1.44	1.94	2.77	2.28	12.54
10 - 15 kts	1.08	0.13	•	0.01	•	•	•	0.07	0.15	0.23	0.28	0.32	0.73	2.03	7.96	7.14	20.12
15 - 20 kts	0.64	0.01	•	•	•	•	•	0.07	0.05	0.06	0.07	0.05	0.09	0.67	9.90	17.44	29.04
20 - 25 kts	0.35	•	•	•	•	•	•	•	•	0.03	•	•	0.06	0.05	4.99	19.83	25.31
25 - 30 kts	0.12	•	•	•	•	•	•	•	0.01	•	•	•	•	0.01	0.56	8.33	9.03
30 - 35 kts	0.01	•	•	•	•	•	•	•	•	•	•	•	•	•	0.03	0.76	0.81
35 - 40 kts	•	•	•	•	•	•	•	•	•	•	•	•	•	•	•	0.01	0.01
40 - 45 kts	•	•	•	•	•	•	•	•	•	•	•	•	•	•	•	•	•
45 - 50 kts	•	•	•	•	•	•	•	•	•	•	•	•	•	•	•	•	•
Total	3.11	0.52	0.26	0.15	0.15	0.12	0.13	0.46	0.77	1.10	1.19	1.69	2.67	5.06	26.61	56.01	100.00