

\*\*\*\*\*

Marine Weather Forecast for Attentive NJ Offshore Cable Route

Forecast valid as of 20-Mar-2024 1100 GMT

\*\*\*\*\*

All times are local.

Today

Winds: NW, 25-30 kts.

Waves: NW, 5-6 feet, 7-8 sec.

Currents: SE, less than 0.5 knot.

Tonight

Winds: NW, 30-35 kts.

Waves: NW, 6-7 feet, 6-7 sec.

Currents: E, less than 0.5 knot.

Thursday

Winds: NW, 25-30 kts.

Waves: NW, 6-7 feet, 6-7 sec.

Currents: NE, less than 0.5 knot.

Thursday Night

Winds: NW, 15-20 kts.

Waves: NW, 4-5 feet, 4-5 sec.

Currents: SE, less than 0.5 knot.

Friday

Winds: N, 15-20 kts.

Waves: N, 2-3 feet, 6-7 sec.

Currents: SE, less than 0.5 knot.

Friday Night

Winds: NE, 15-20 kts.

Waves: N, 2-3 feet, 4-5 sec.

Currents: E, less than 0.5 knot.

Saturday

Winds: NE, 35-40 kts.

Waves: NE, 9-10 feet, 7-8 sec.

Currents: SE, less than 0.5 knot.

Saturday Night

Winds: N, 30-35 kts.

Waves: NE, 9-10 feet, 10-11 sec.

Currents: N, less than 0.5 knot.

Sunday

Winds: NE, 20-25 kts.

Waves: NE, 10-11 feet, 10-11 sec.

Currents: NW, less than 0.5 knot.

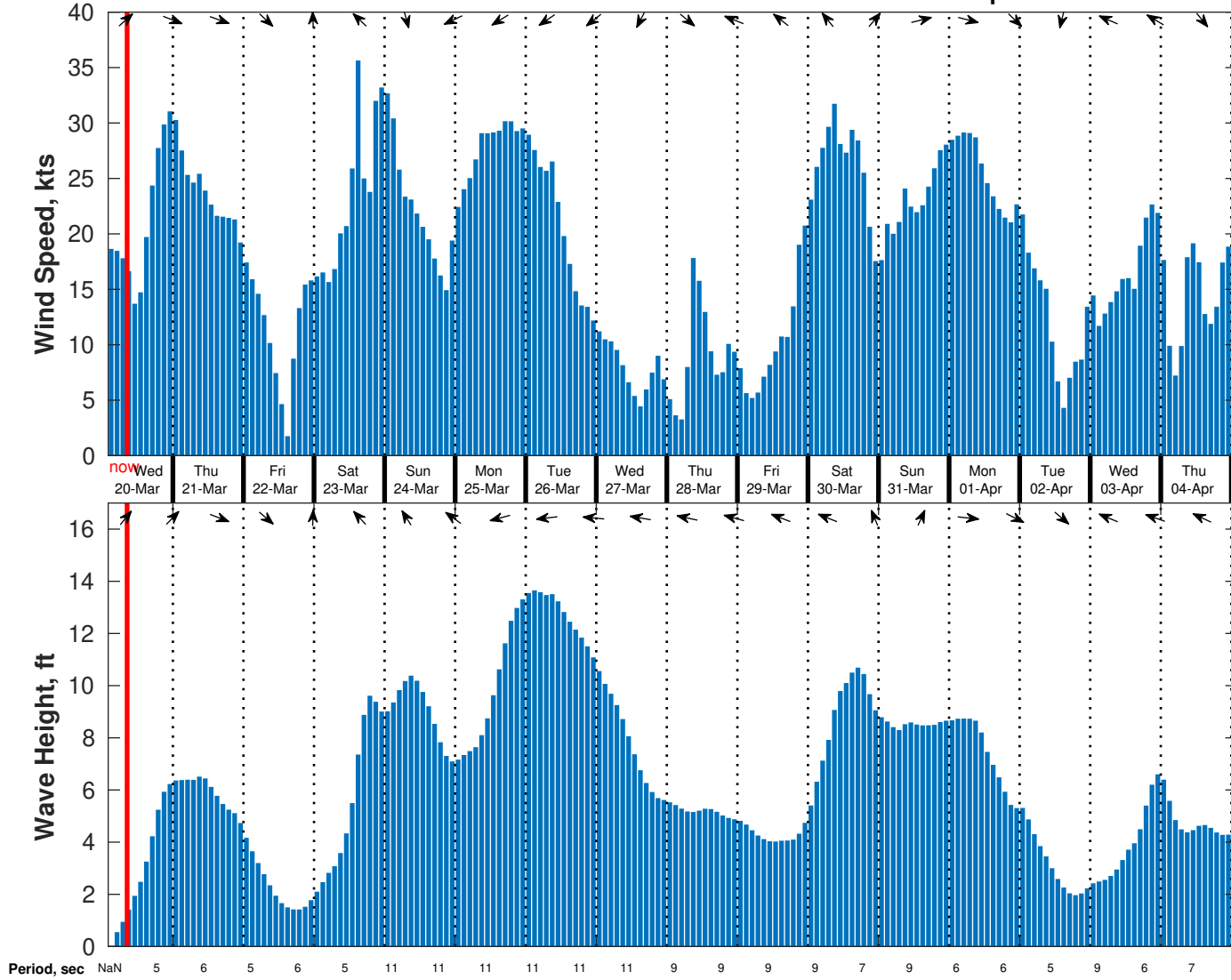
Sunday Night

Winds: NE, 25-30 kts.

Waves: E, 7-8 feet, 10-11 sec.

Currents: S, less than 0.5 knot.

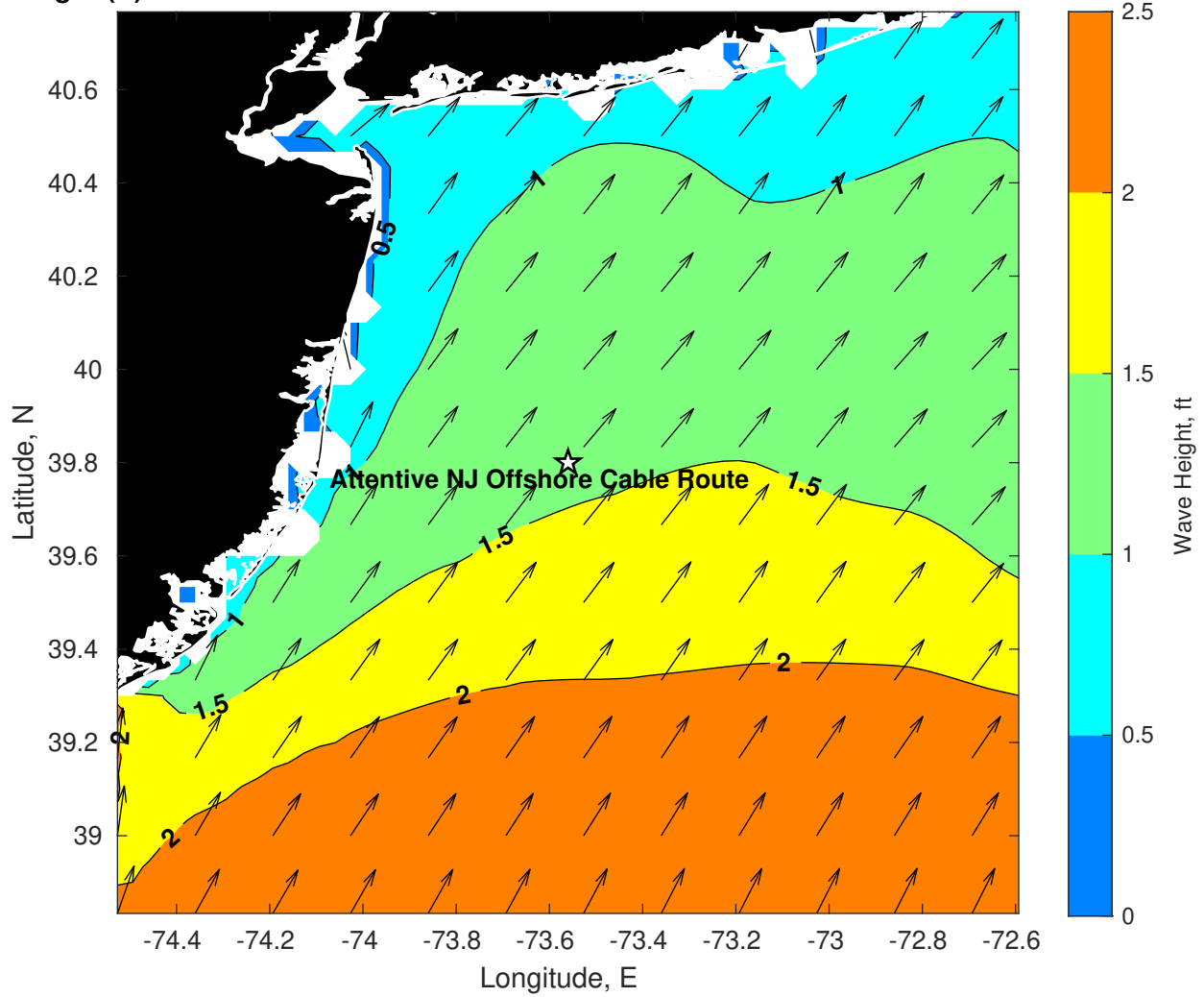
Wind & Wave Forecast for Attentive NJ Offshore Cable Route from 20-Mar-2024 02:00:00 to 05-Apr-2024 02:00:00



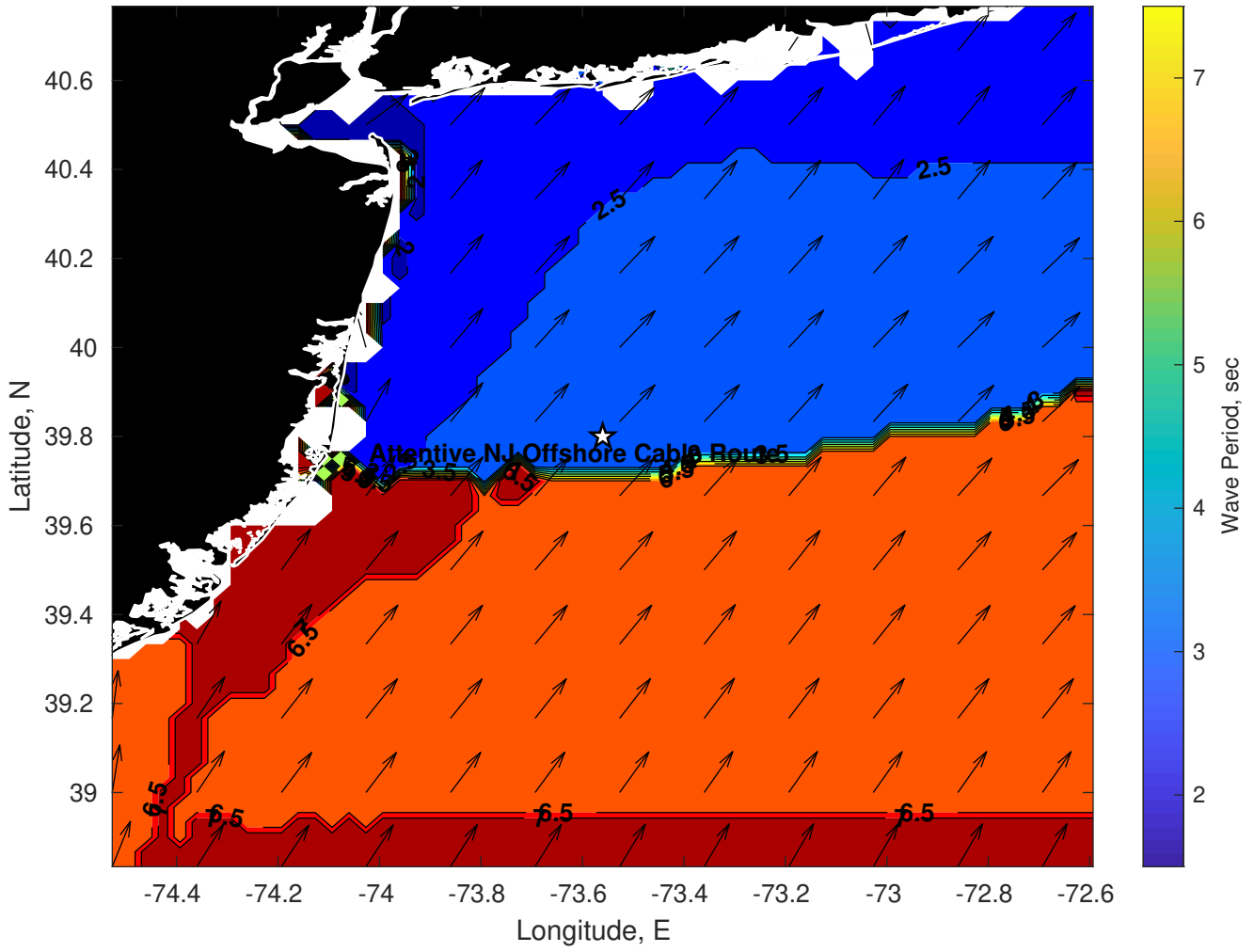
**Met Forecast for Attentive NJ Offshore Cable Route from 20-Mar-2024 06:00:00 to 27-Mar-2024 06:00:00**



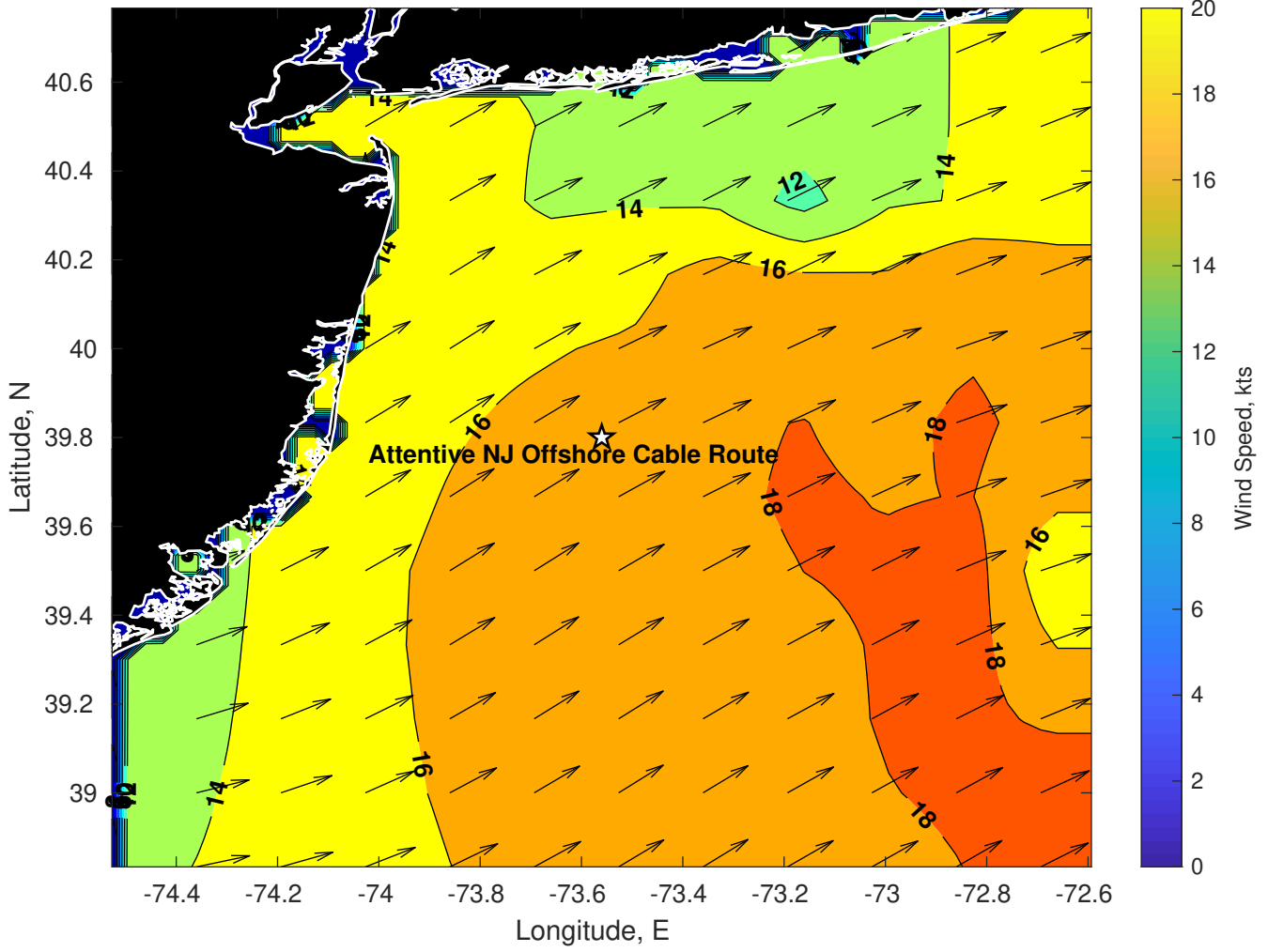
Wave Height (ft) for Attentive NJ Offshore Cable Route at 20-Mar-2024 12:00:00



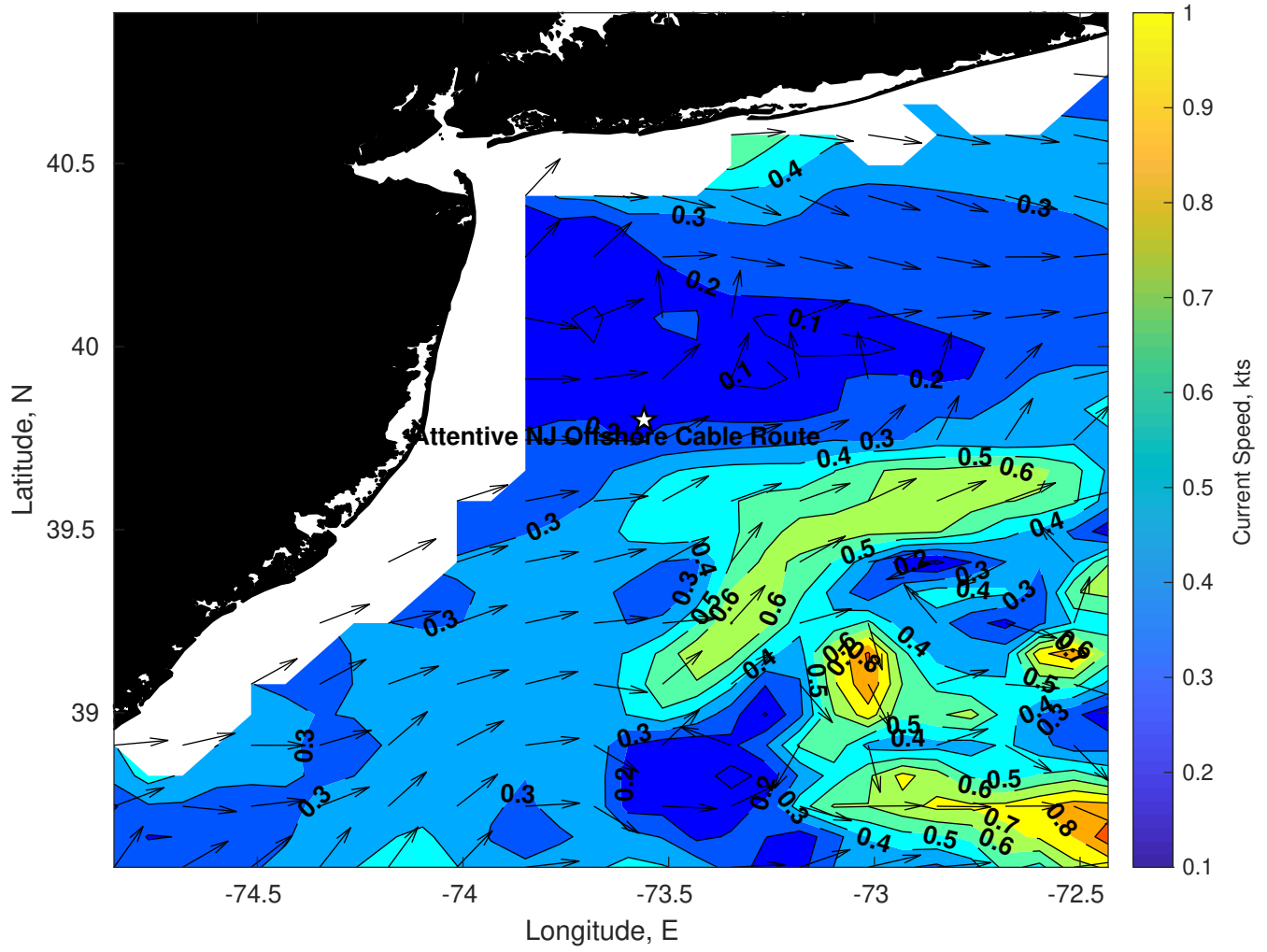
Wave Period (sec) for Attentive NJ Offshore Cable Route at 20-Mar-2024 12:00:00



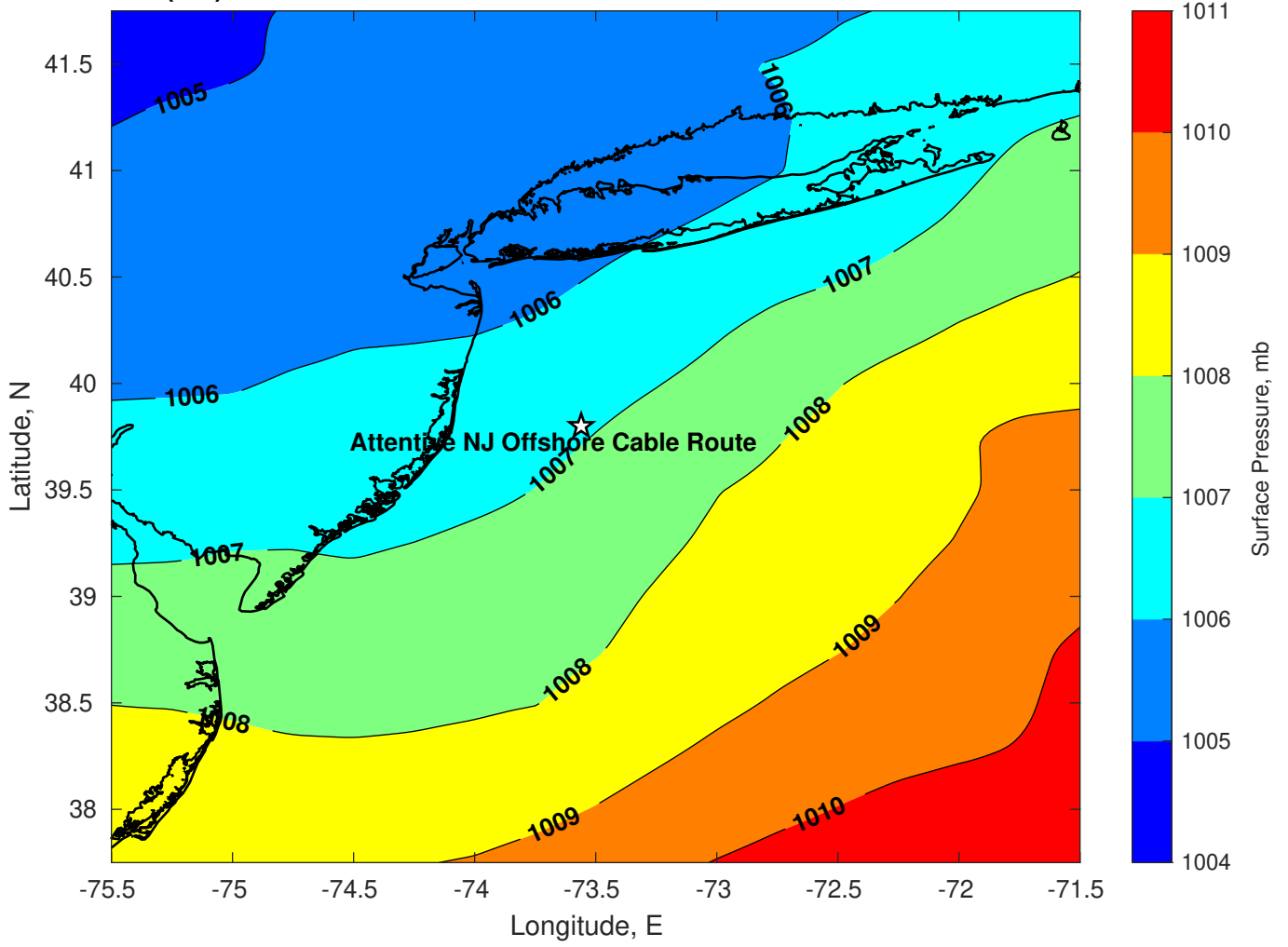
**Winds (kts) for Attentive NJ Offshore Cable Route at 20-Mar-2024 12:00:00**



Surface Currents for Attentive NJ Offshore Cable Route at 20-Mar-2024 00:00:00

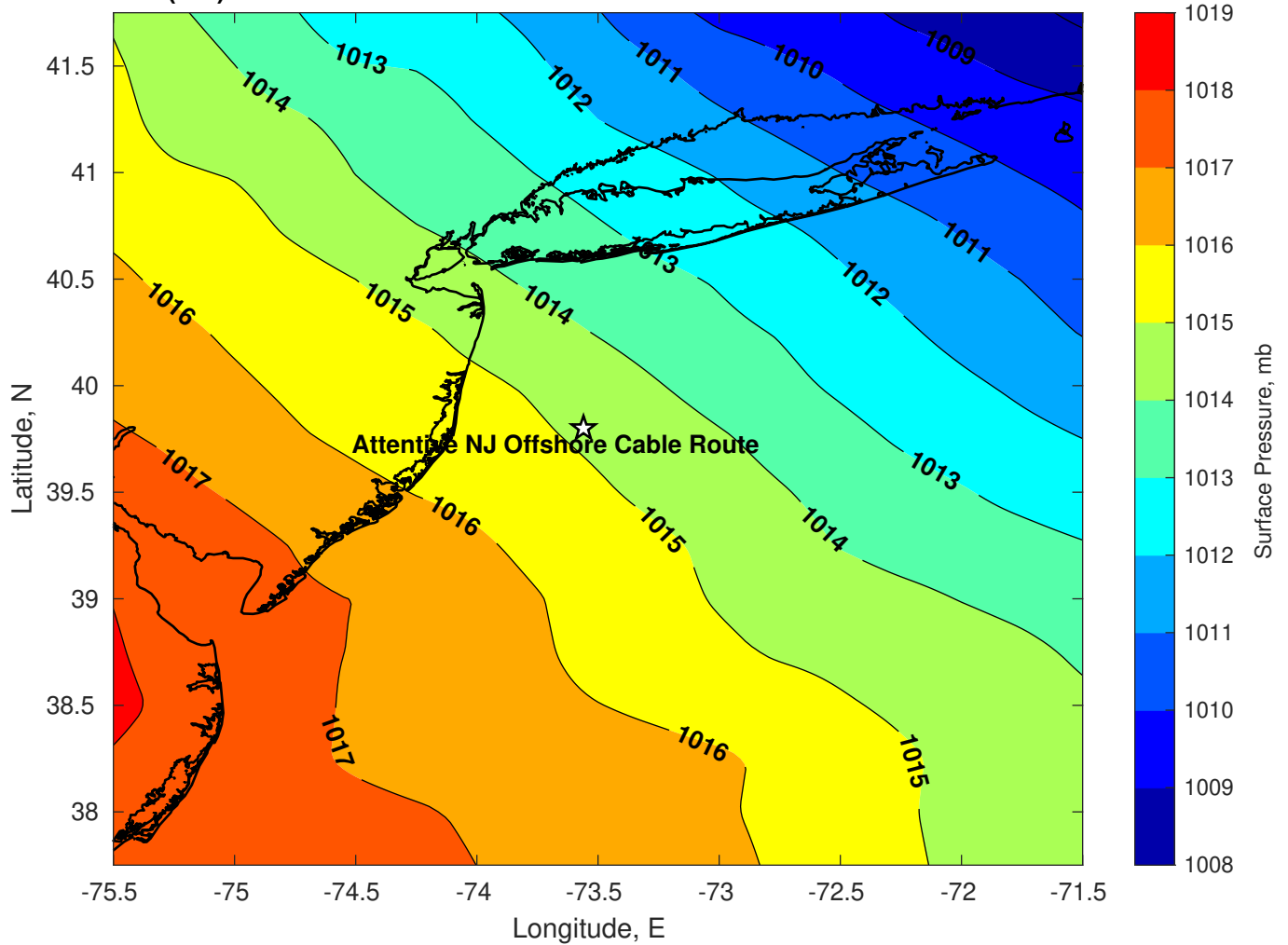


Surface Pressure (mb) for Attentive NJ Offshore Cable Route at 20-Mar-2024 06:00:00

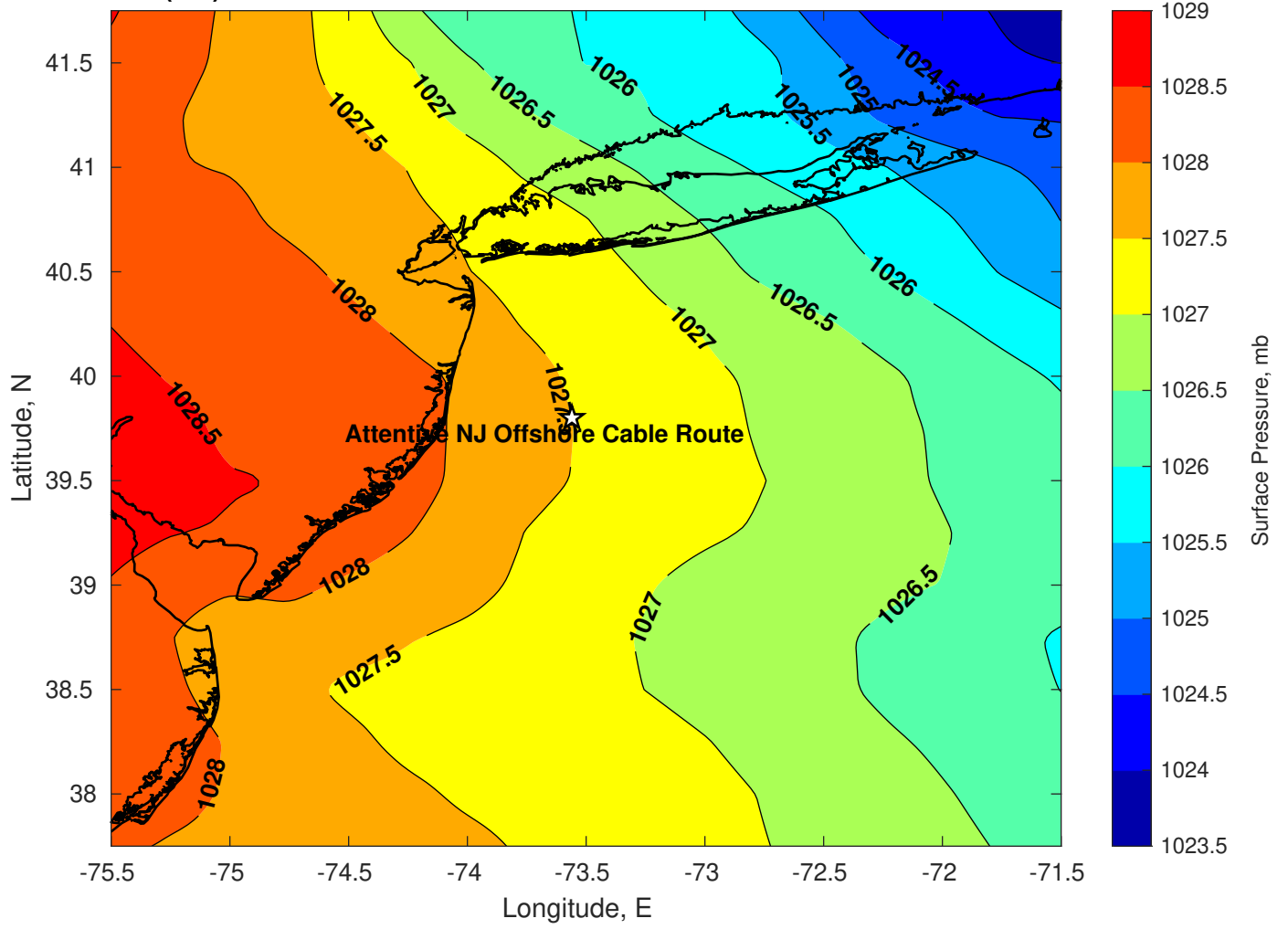




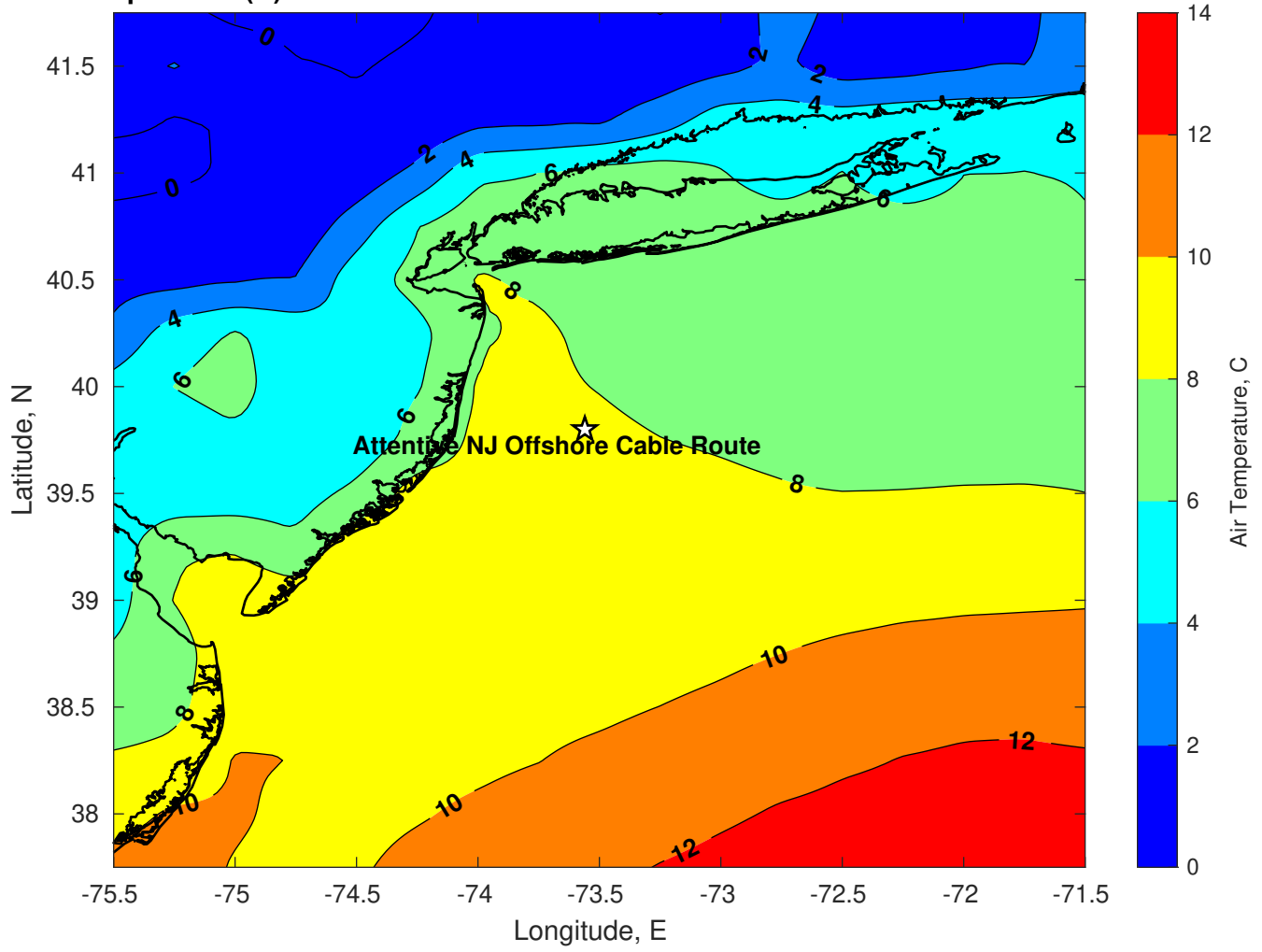
Surface Pressure (mb) for Attentive NJ Offshore Cable Route at 21-Mar-2024 06:00:00



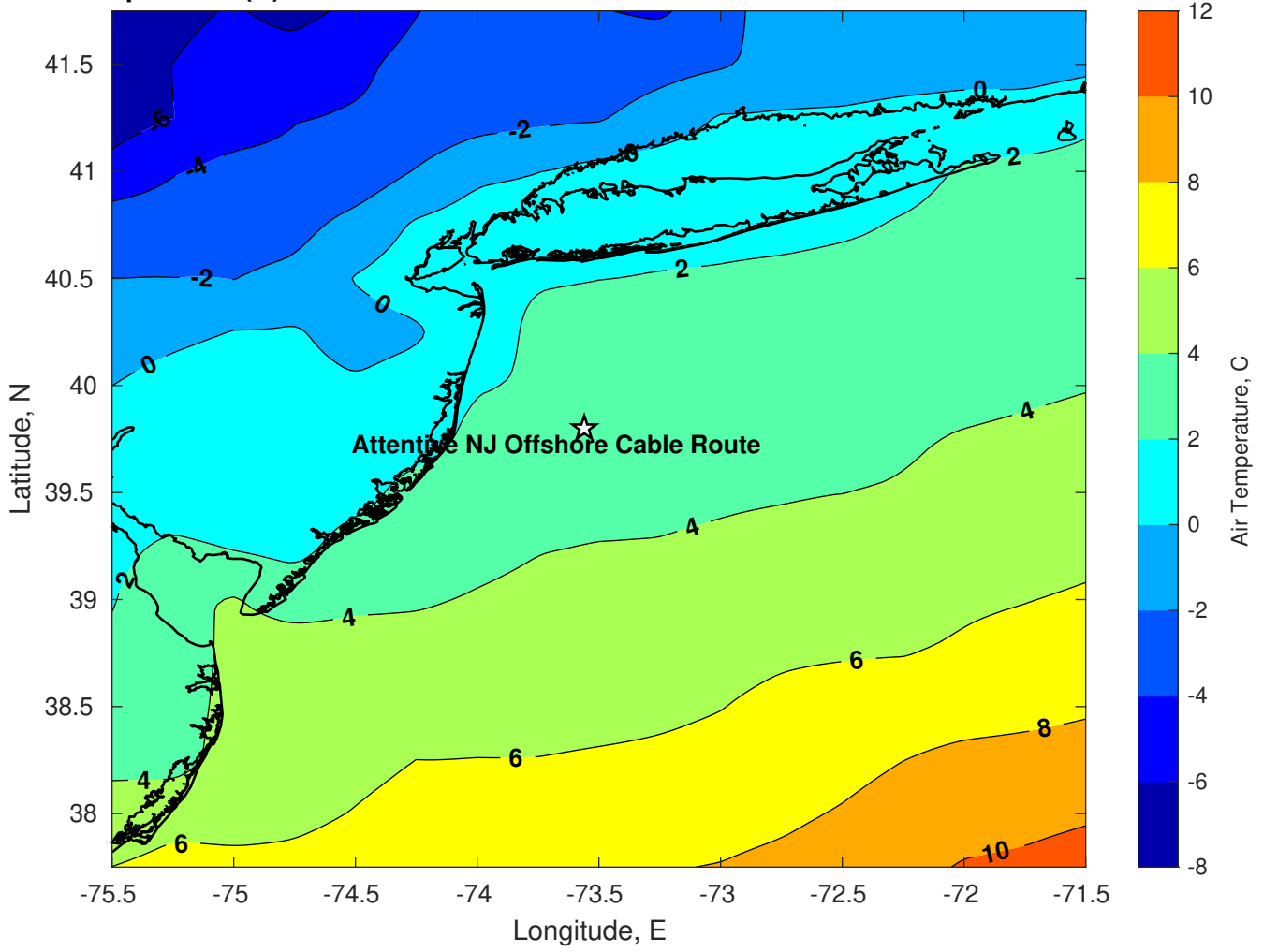
Surface Pressure (mb) for Attentive NJ Offshore Cable Route at 22-Mar-2024 06:00:00



**Air Temperature (C) for Attentive NJ Offshore Cable Route at 20-Mar-2024**



**Air Temperature (C) for Attentive NJ Offshore Cable Route at 20-Mar-2024**



**Air Temperature (C) for Attentive NJ Offshore Cable Route at 20-Mar-2024**

