
Marine Weather Forecast for Central Long Island Sound

Forecast valid as of 30-Jan-2024 1200 GMT

All times are local.

Today

Winds: E, 5-10 kts.
Waves: E, 1-2 feet, 2-3 sec.
Currents: S, less than 0.5 knot.

Tonight

Winds: E, 5-10 kts.
Waves: E, 0-1 feet, 2-3 sec.
Currents: SW, less than 0.5 knot.

Wednesday

Winds: E, 5-10 kts.
Waves: E, 0-1 feet, 2-3 sec.
Currents: W, less than 0.5 knot.

Wednesday Night

Winds: N, 5-10 kts.
Waves: E, 0-1 feet, 2-3 sec.
Currents: NW, less than 0.5 knot.

Thursday

Winds: NW, 10-15 kts.
Waves: W, 1-2 feet, 2-3 sec.
Currents: N, less than 0.5 knot.

Thursday Night

Winds: NW, 10-15 kts.
Waves: W, 0-1 feet, 2-3 sec.
Currents: NE, less than 0.5 knot.

Friday

Winds: NW, 10-15 kts.
Waves: NW, 1-2 feet, 2-3 sec.
Currents: E, less than 0.5 knot.

Friday Night

Winds: N, 10-15 kts.
Waves: N, 1-2 feet, 2-3 sec.
Currents: SE, less than 0.5 knot.

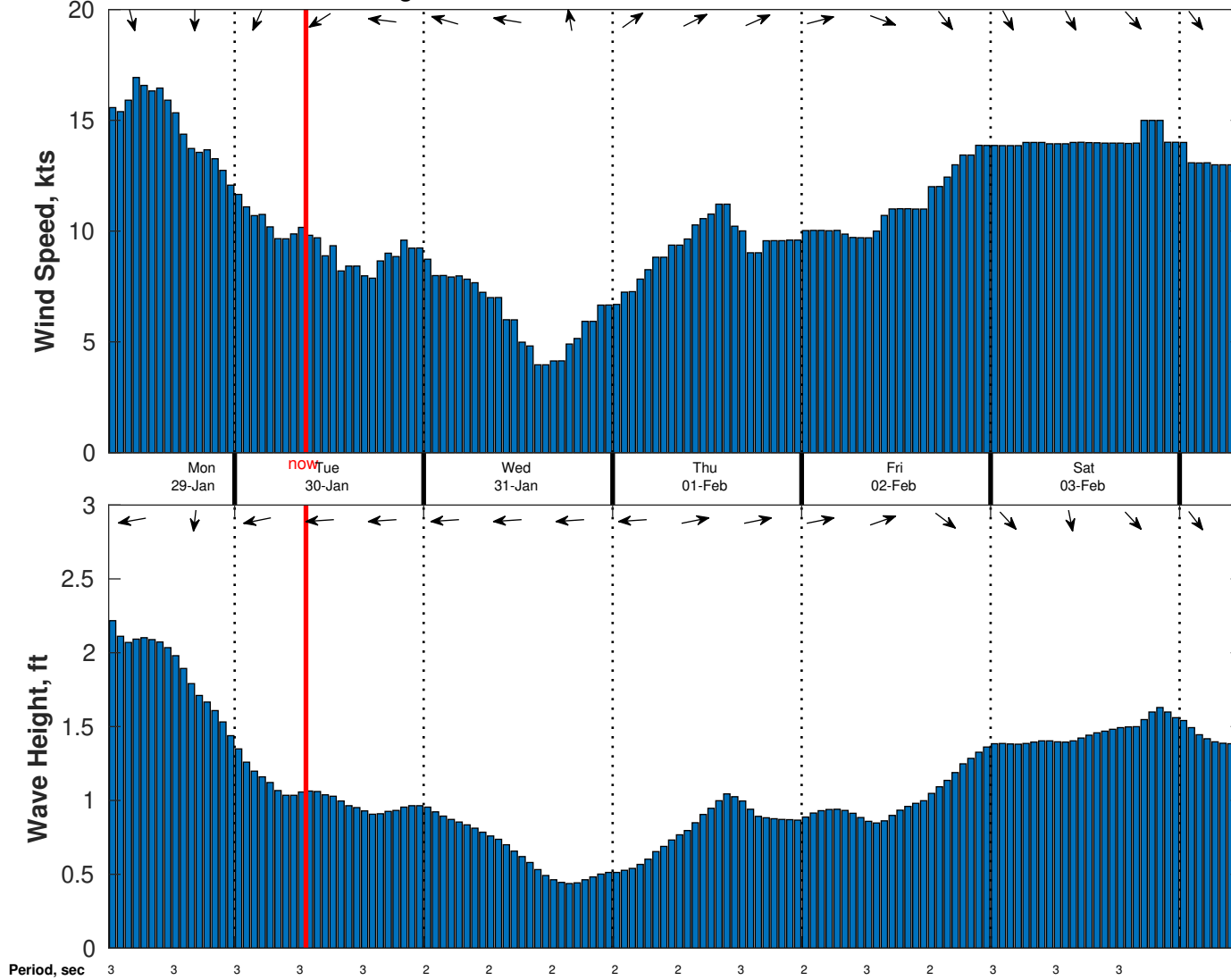
Saturday

Winds: N, 10-15 kts.
Waves: N, 1-2 feet, 2-3 sec.
Currents: S, less than 0.5 knot.

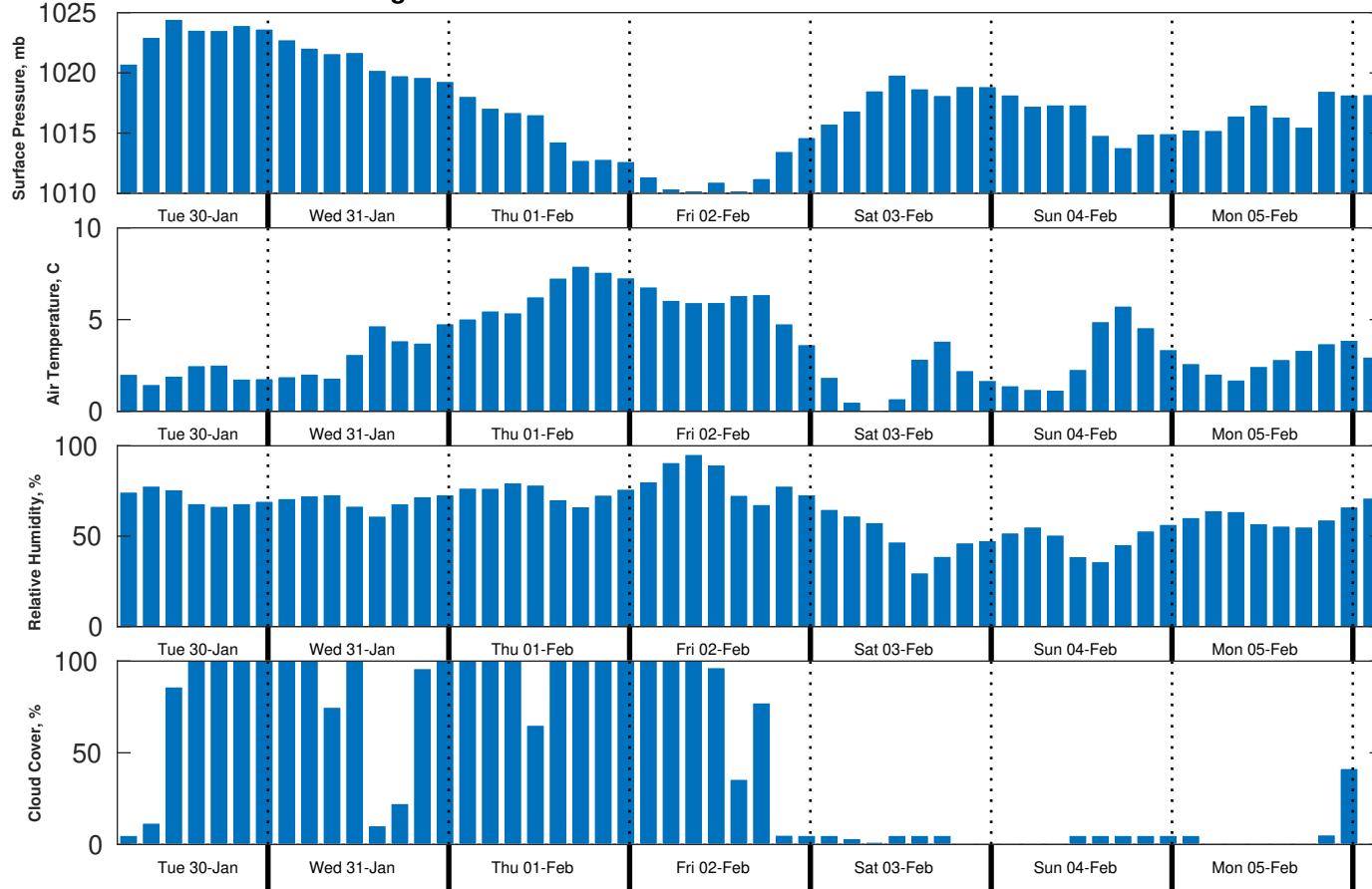
Saturday Night

Winds: NW, 10-15 kts.
Waves: NW, 1-2 feet, 2-3 sec.
Currents: S, less than 0.5 knot.

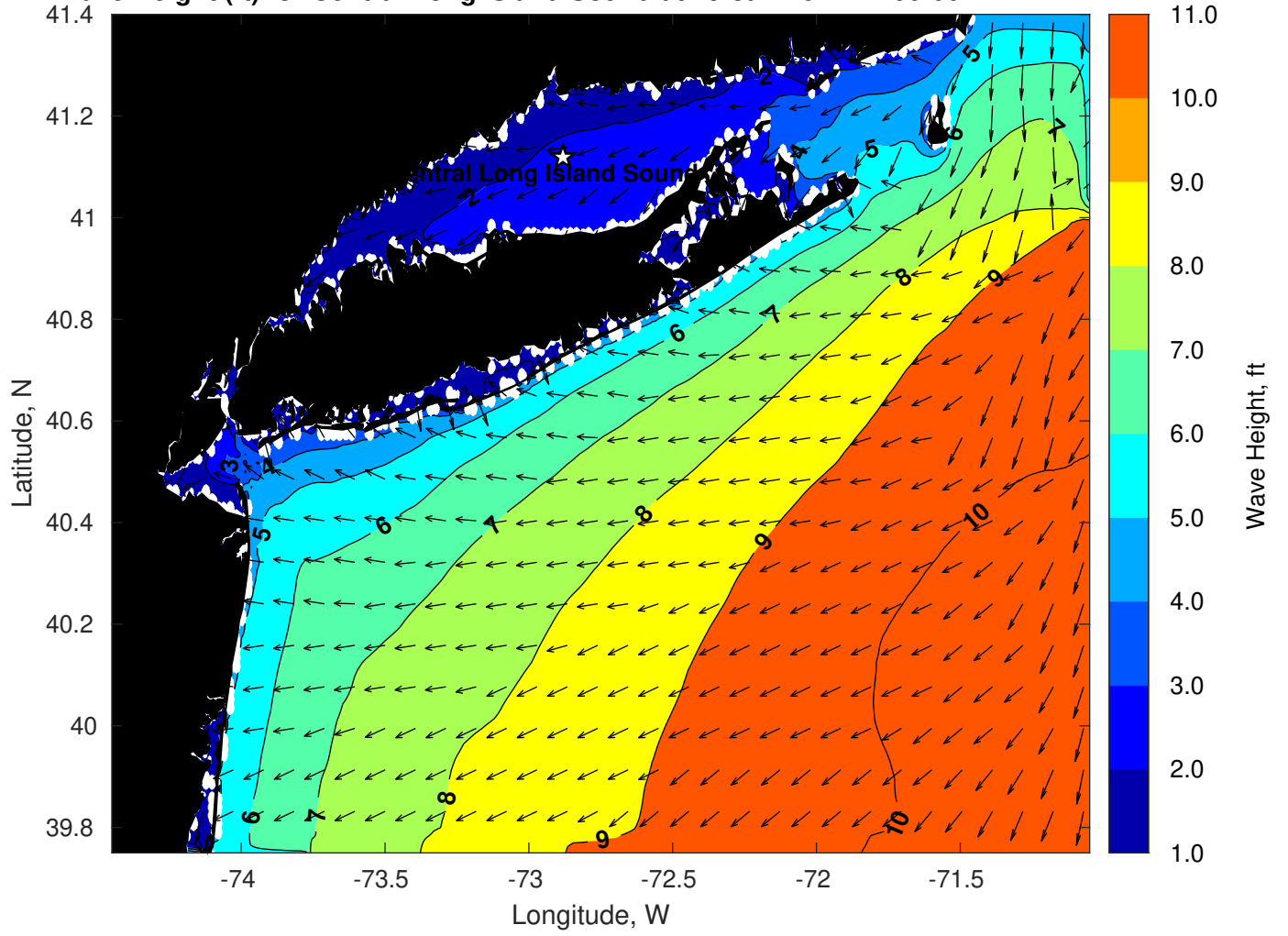
Wind & Wave Forecast for Central Long Island Sound from 29-Jan-2024 08:00:00 to 04-Feb-2024 08:00:00



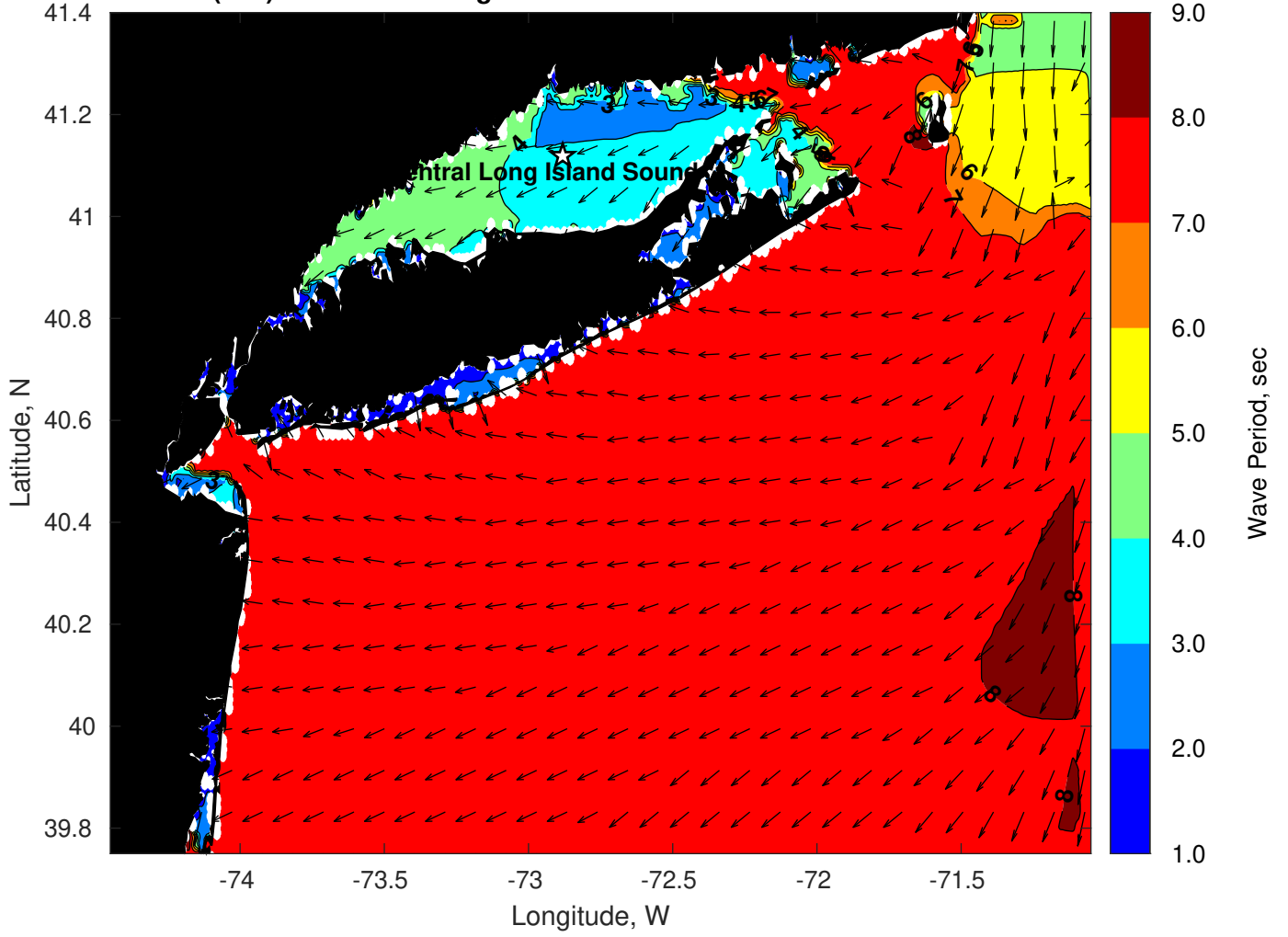
Met Forecast for Central Long Island Sound from 30-Jan-2024 06:00:00 to 06-Feb-2024 06:00:00



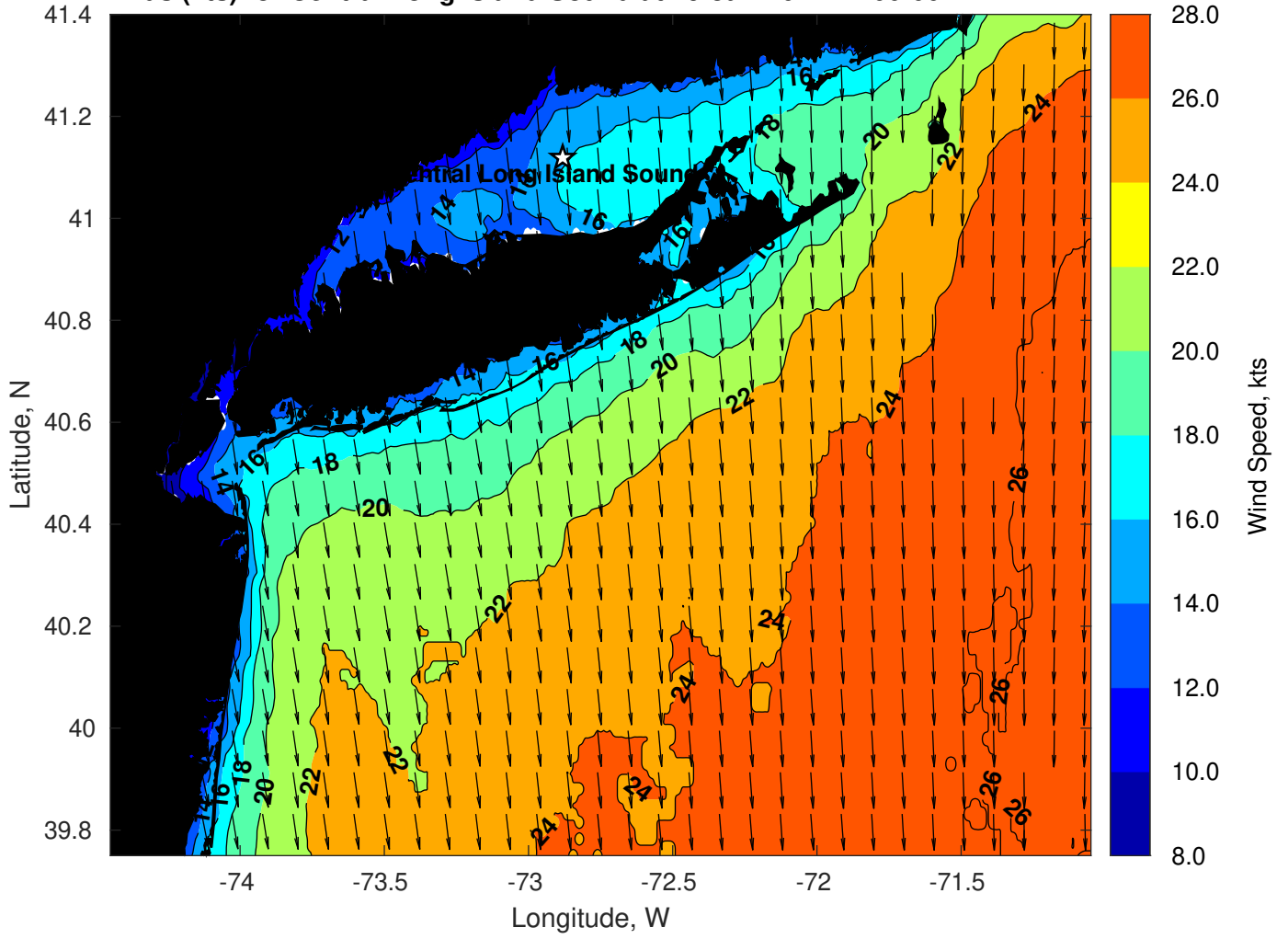
Wave Height (ft) for Central Long Island Sound at 29-Jan-2024 12:00:00



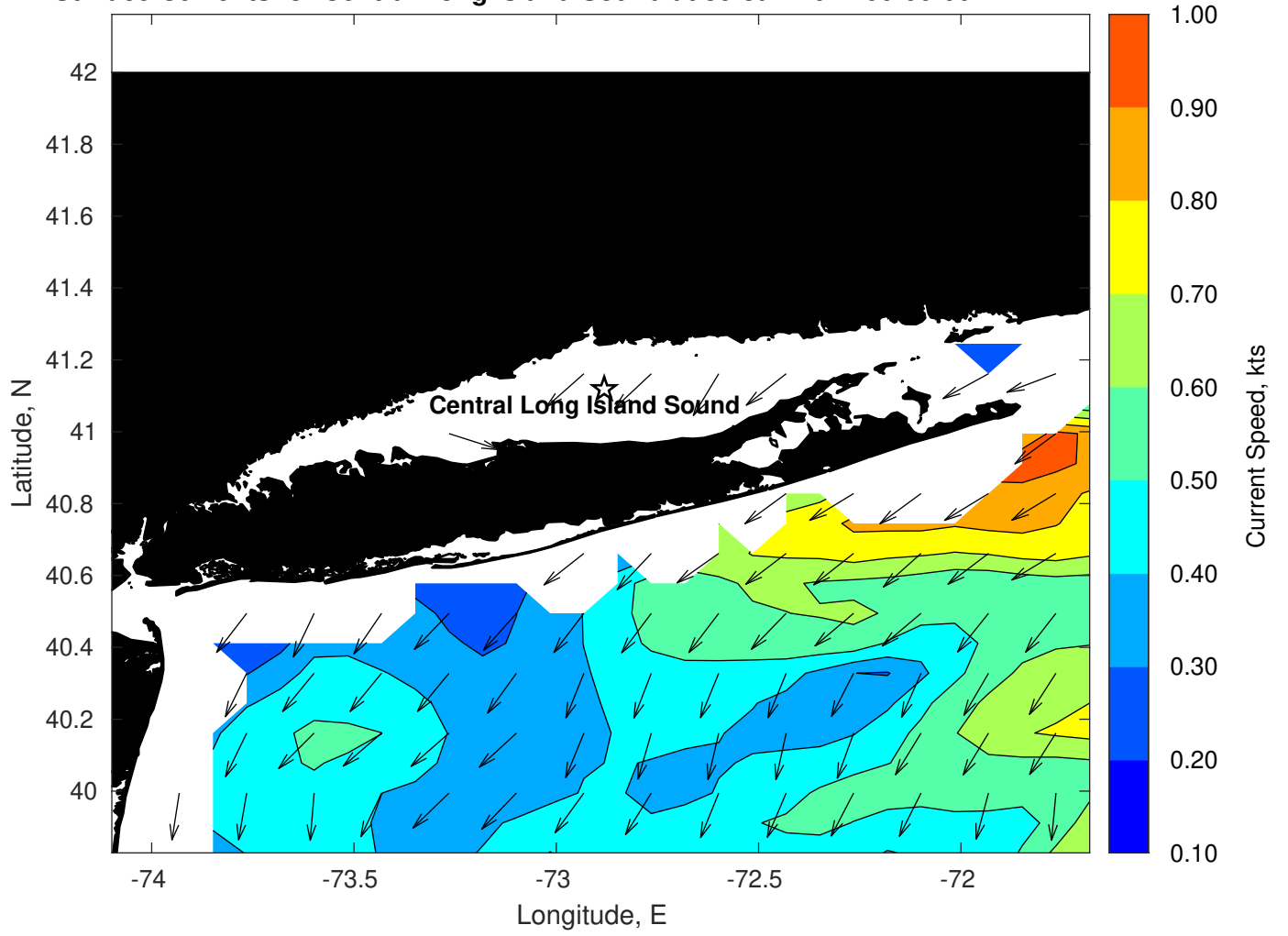
Wave Period (sec) for Central Long Island Sound at 29-Jan-2024 12:00:00



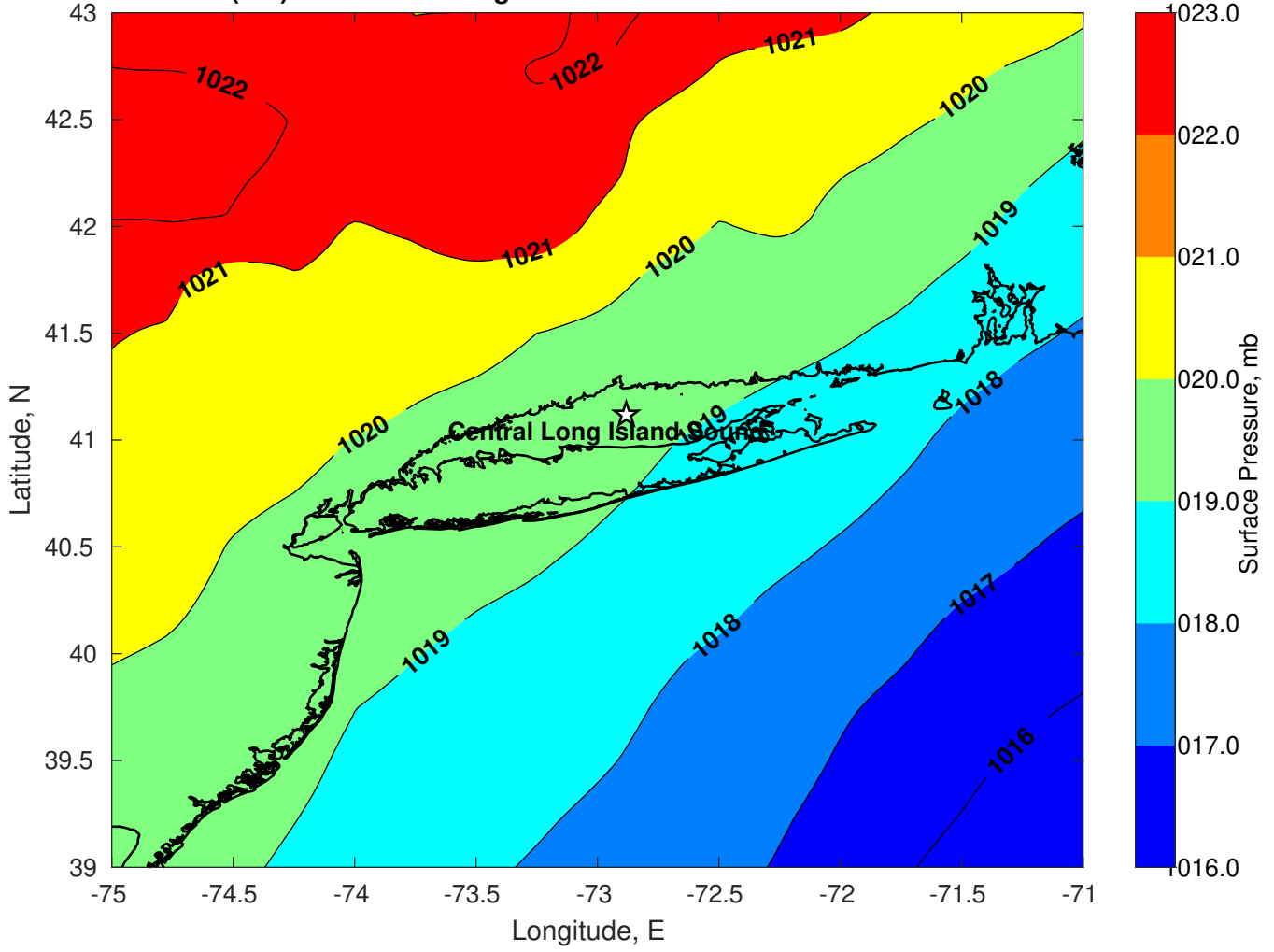
Winds (kts) for Central Long Island Sound at 29-Jan-2024 12:00:00



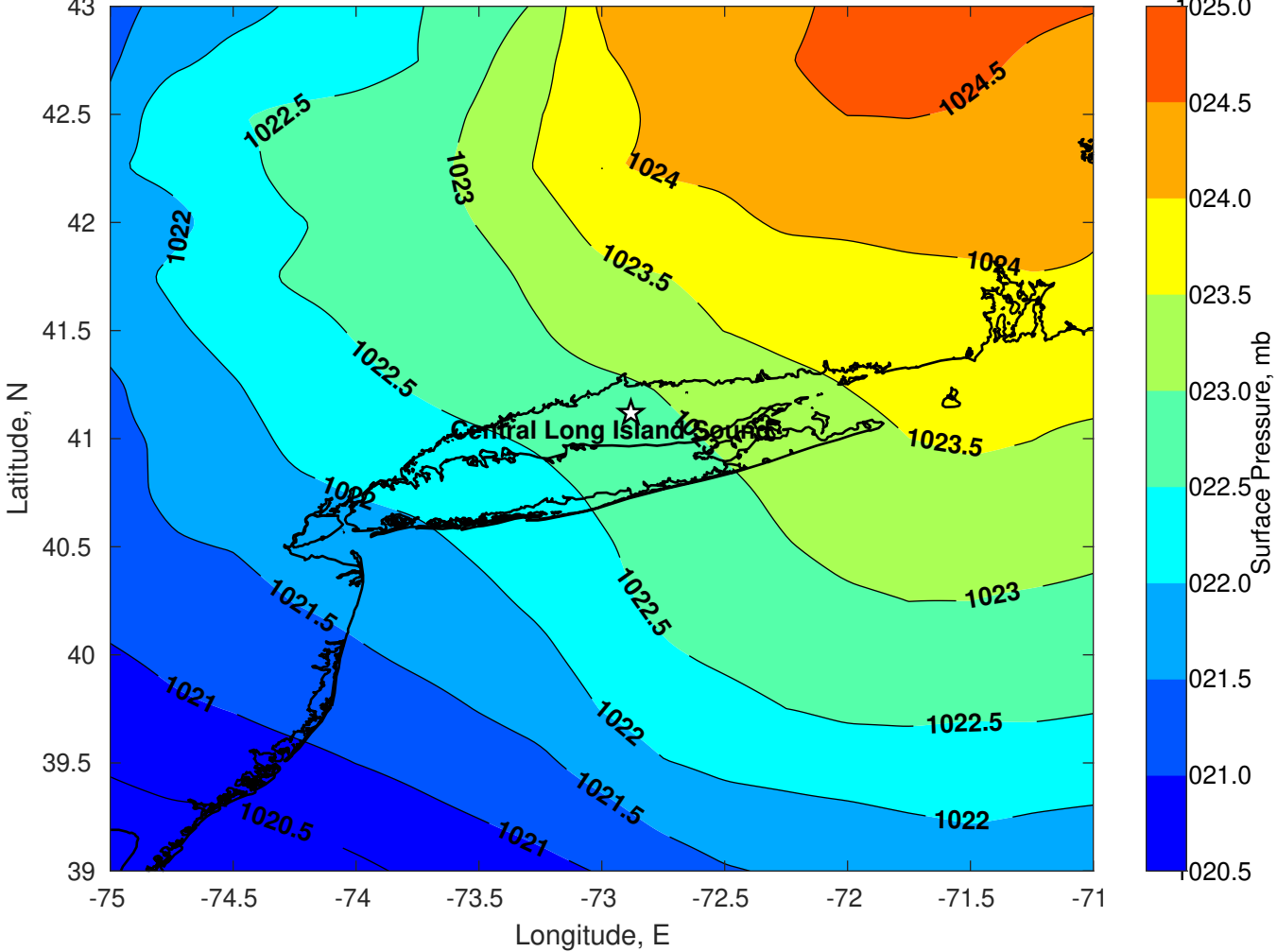
Surface Currents for Central Long Island Sound at 30-Jan-2024 00:00:00



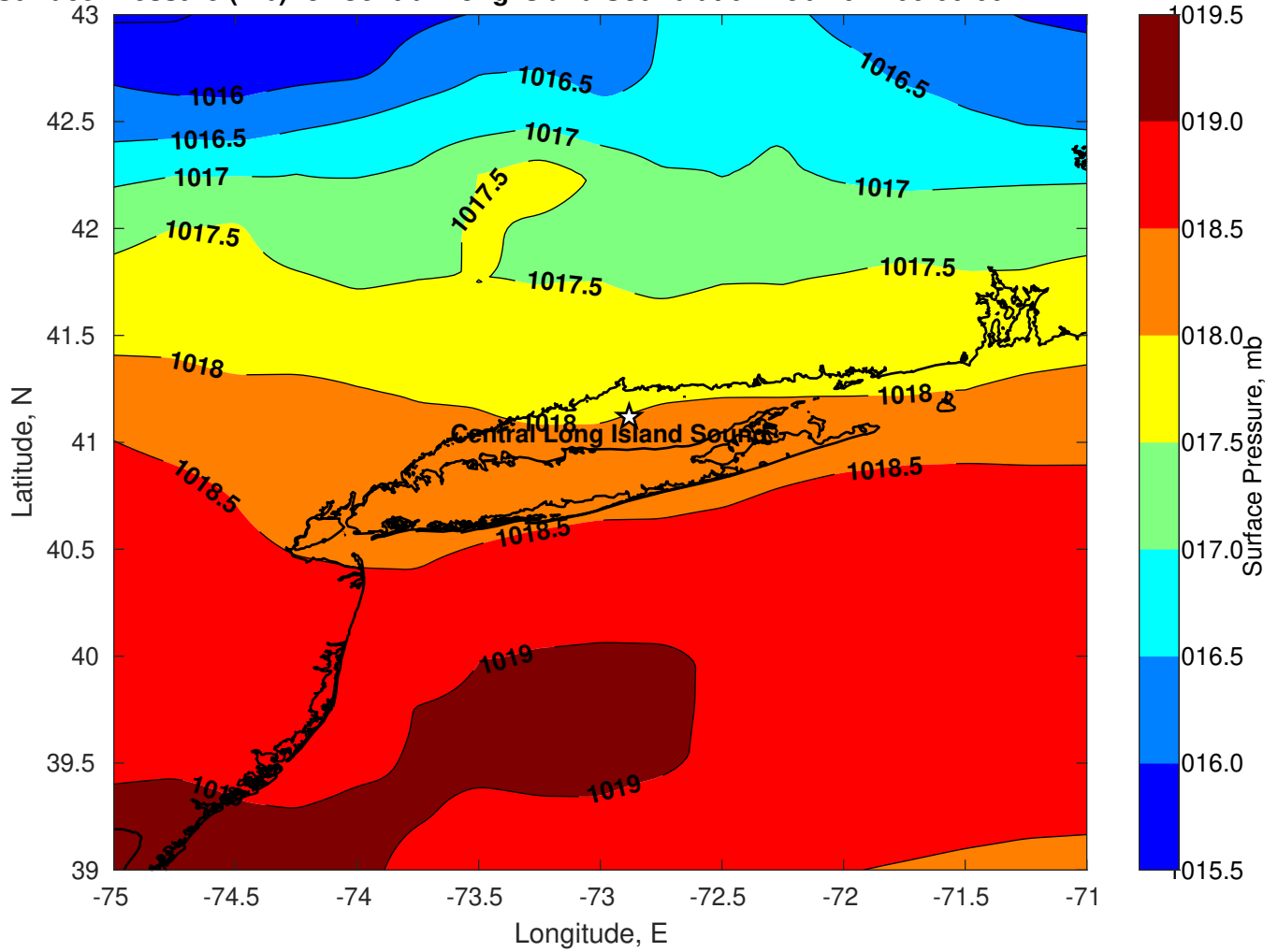
Surface Pressure (mb) for Central Long Island Sound at 30-Jan-2024 06:00:00



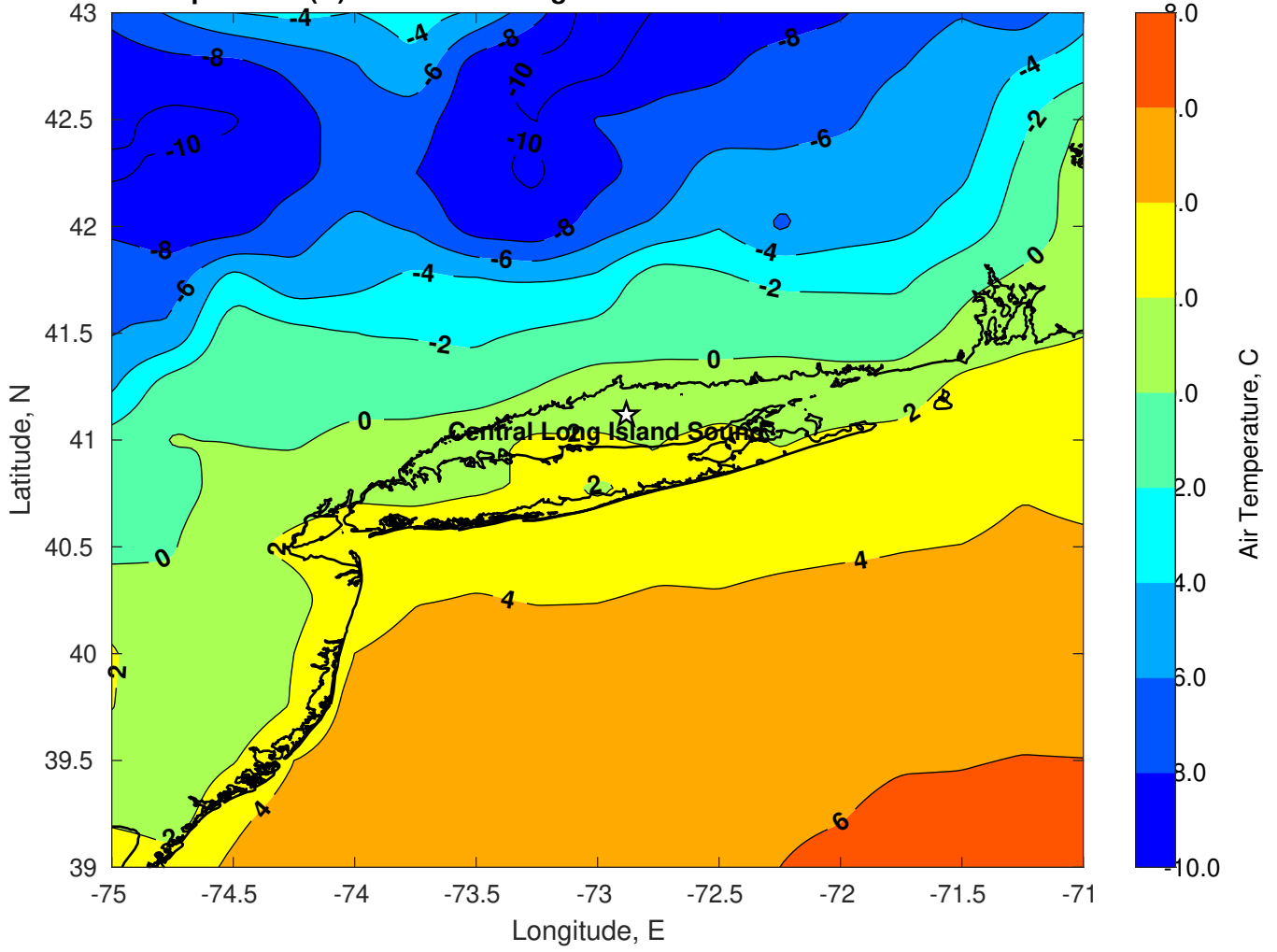
Surface Pressure (mb) for Central Long Island Sound at 31-Jan-2024 06:00:00



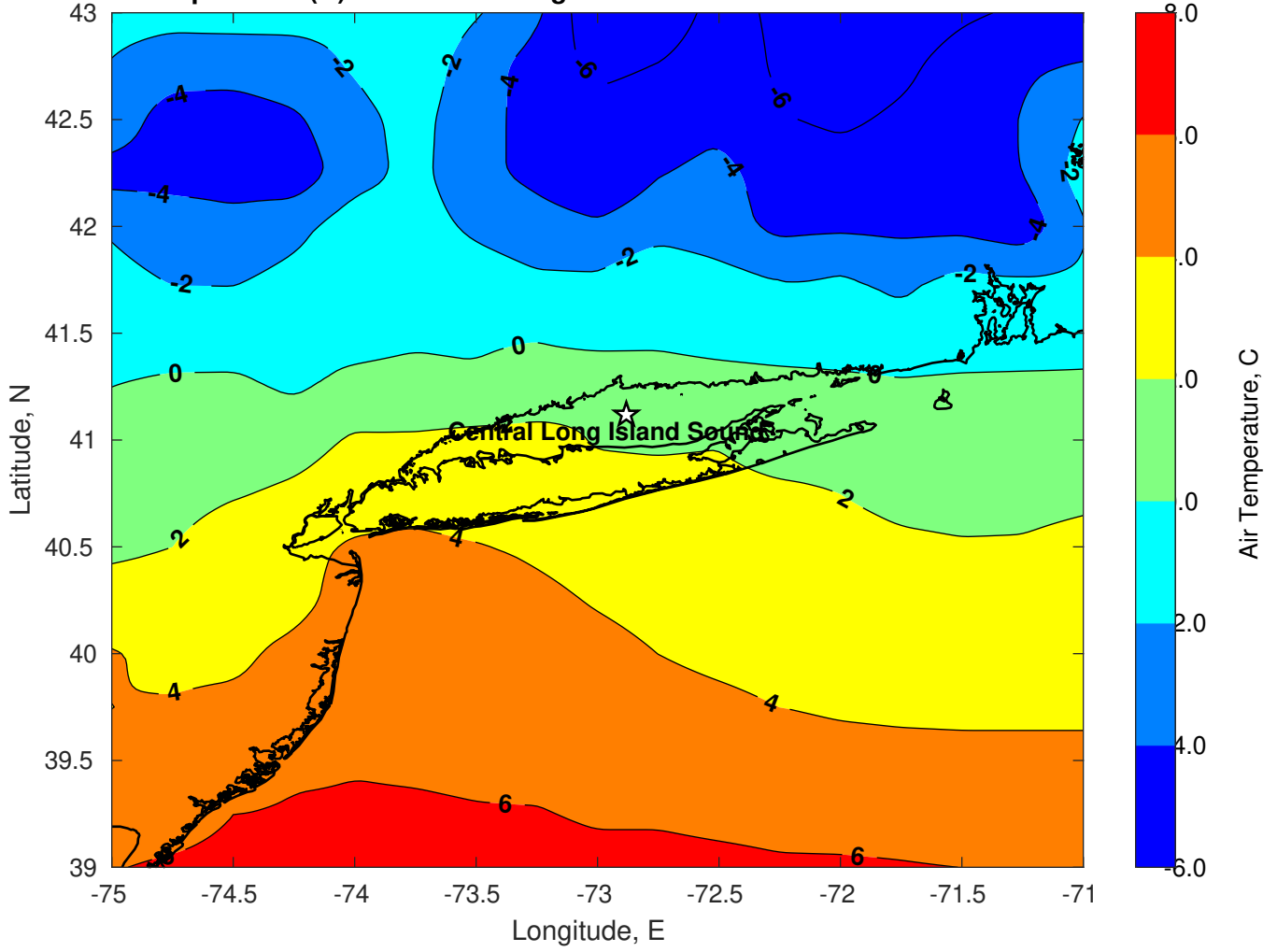
Surface Pressure (mb) for Central Long Island Sound at 01-Feb-2024 06:00:00



Air Temperature (C) for Central Long Island Sound at 30-Jan-2024



Air Temperature (C) for Central Long Island Sound at 30-Jan-2024



Air Temperature (C) for Central Long Island Sound at 30-Jan-2024

