
Marine Weather Forecast for Nautilus
Forecast valid as of 02-May-2024 2300 GMT

All times are local.

Tonight

Winds: NE, 15-20 kts.
Waves: N, 3-4 feet, 5-6 sec.
Currents: E, less than 0.5 knot.

Friday

Winds: E, 10-15 kts.
Waves: E, 2-3 feet, 5-6 sec.
Currents: S, less than 0.5 knot.

Friday Night

Winds: E, 20-25 kts.
Waves: E, 4-5 feet, 5-6 sec.
Currents: W, less than 0.5 knot.

Saturday

Winds: E, 10-15 kts.
Waves: E, 3-4 feet, 5-6 sec.
Currents: W, less than 0.5 knot.

Saturday Night

Winds: E, 10-15 kts.
Waves: E, 2-3 feet, 5-6 sec.
Currents: SW, less than 0.5 knot.

Sunday

Winds: NE, 10-15 kts.
Waves: NE, 3-4 feet, 4-5 sec.
Currents: W, less than 0.5 knot.

Sunday Night

Winds: E, 10-15 kts.
Waves: E, 3-4 feet, 5-6 sec.
Currents: NW, less than 0.5 knot.

Monday

Winds: N, 5-10 kts.
Waves: E, 2-3 feet, 10-11 sec.
Currents: NE, less than 0.5 knot.

Monday Night

Winds: N, 5-10 kts.
Waves: E, 3-4 feet, 9-10 sec.
Currents: SE, less than 0.5 knot.

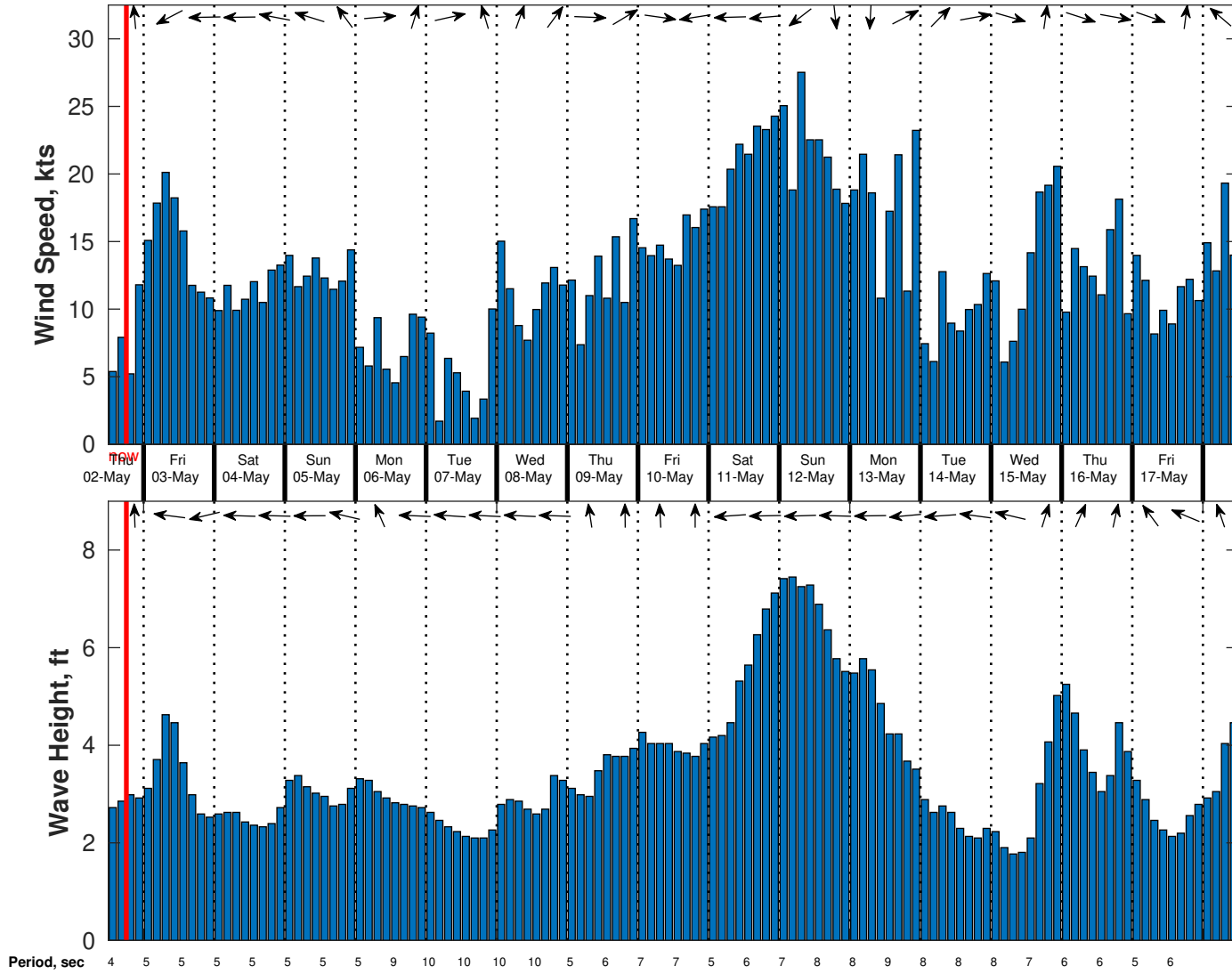
Tuesday

Winds: N, 15-20 kts.
Waves: E, 2-3 feet, 10-11 sec.
Currents: E, less than 0.5 knot.

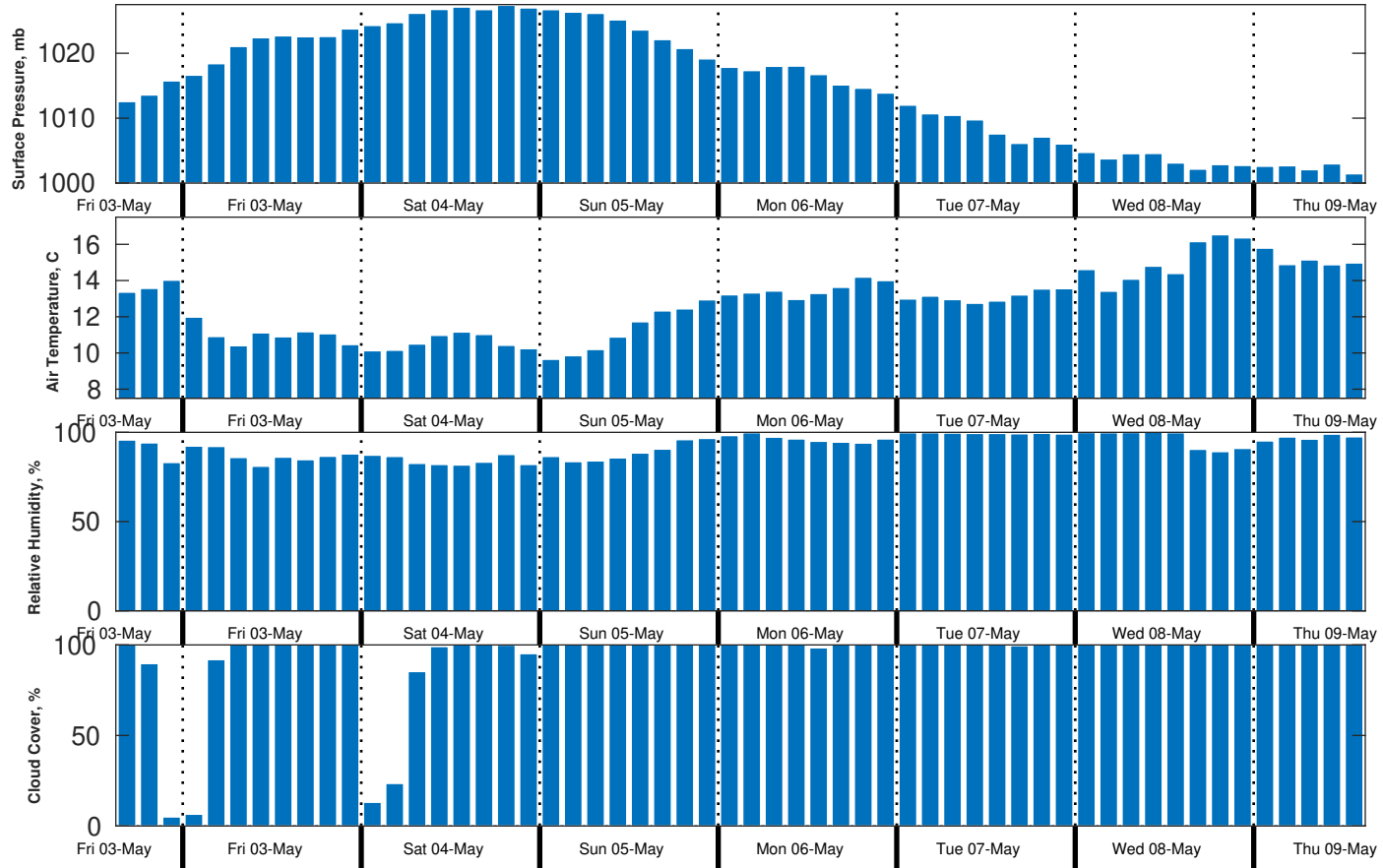
Tuesday Night

Winds: E, 5-10 kts.
Waves: E, 2-3 feet, 10-11 sec.

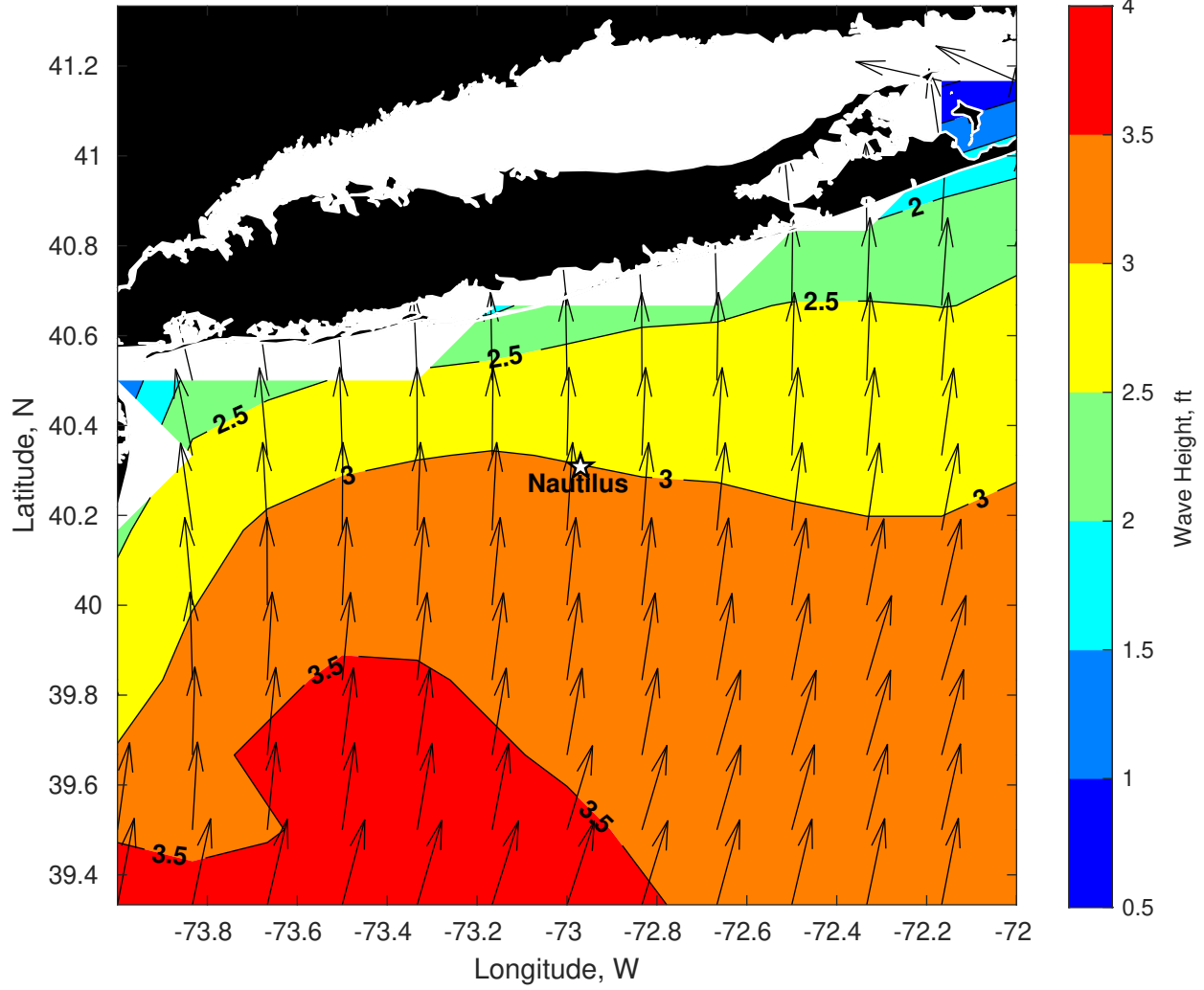
Wind & Wave Forecast for Nautilus from 02-May-2024 12:00:00 to 18-May-2024 12:00:00



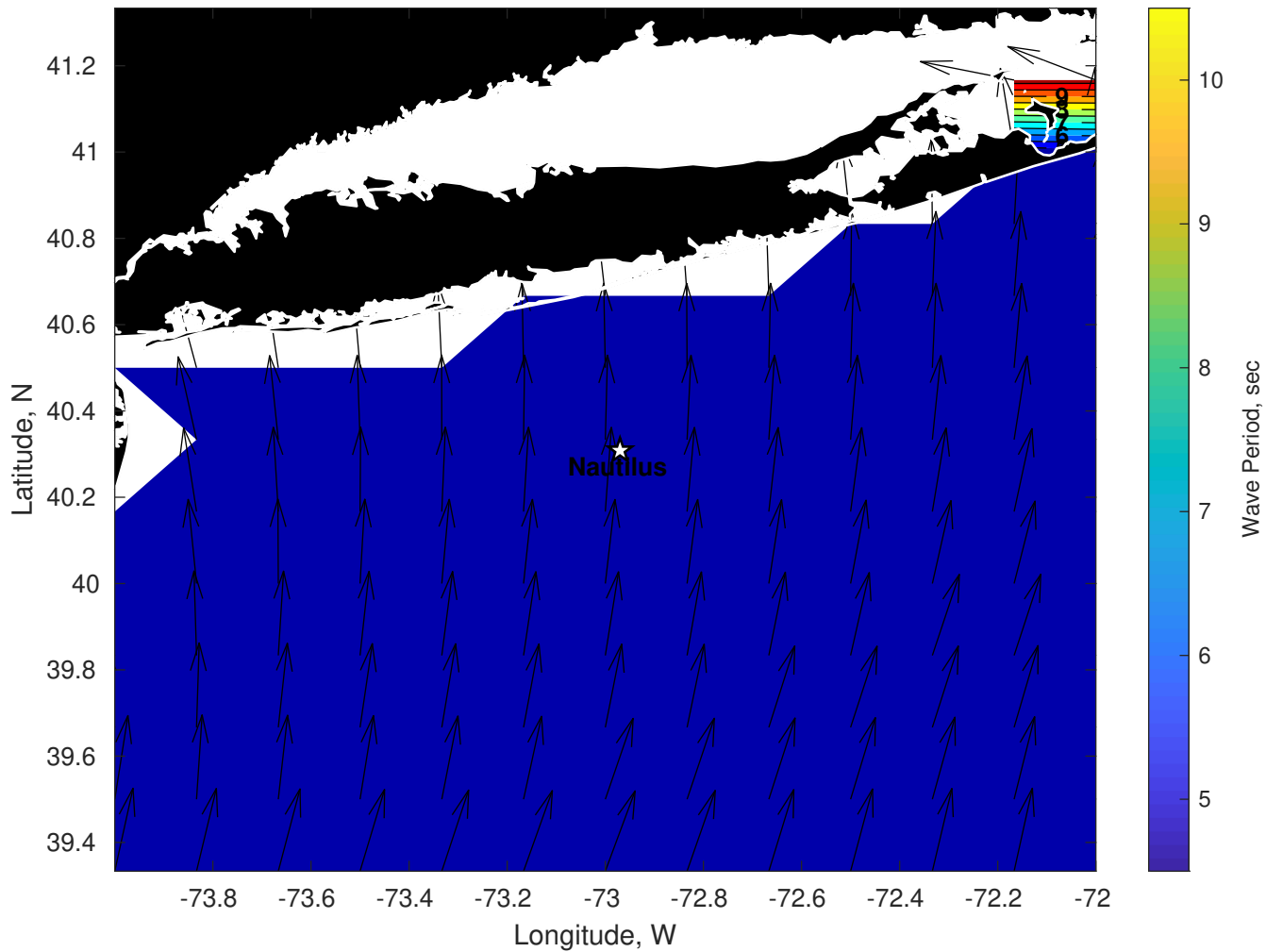
Met Forecast for Nautilus from 02-May-2024 18:00:00 to 09-May-2024 18:00:00



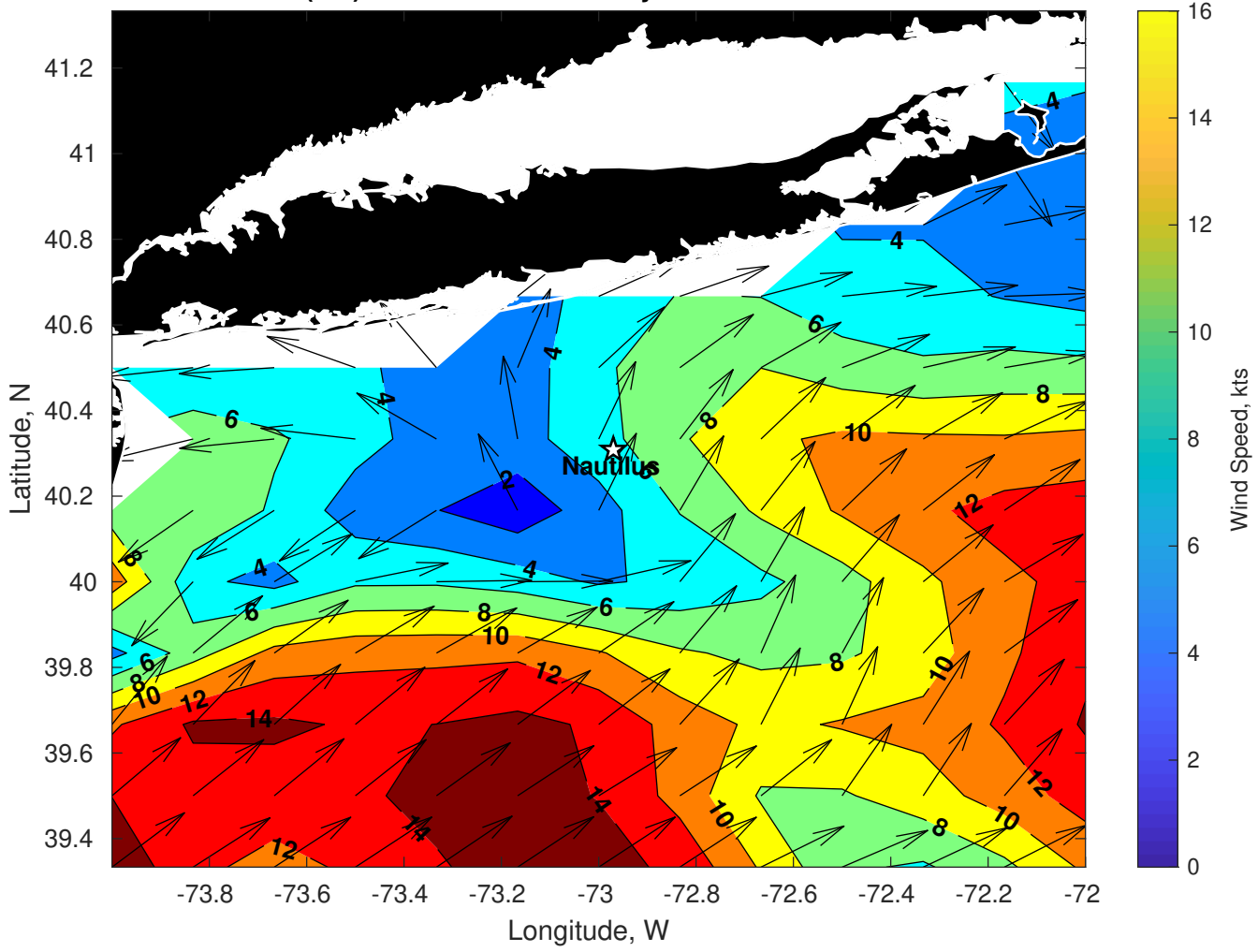
Wave Height (ft) for Nautilus at 03-May-2024 00:00:00



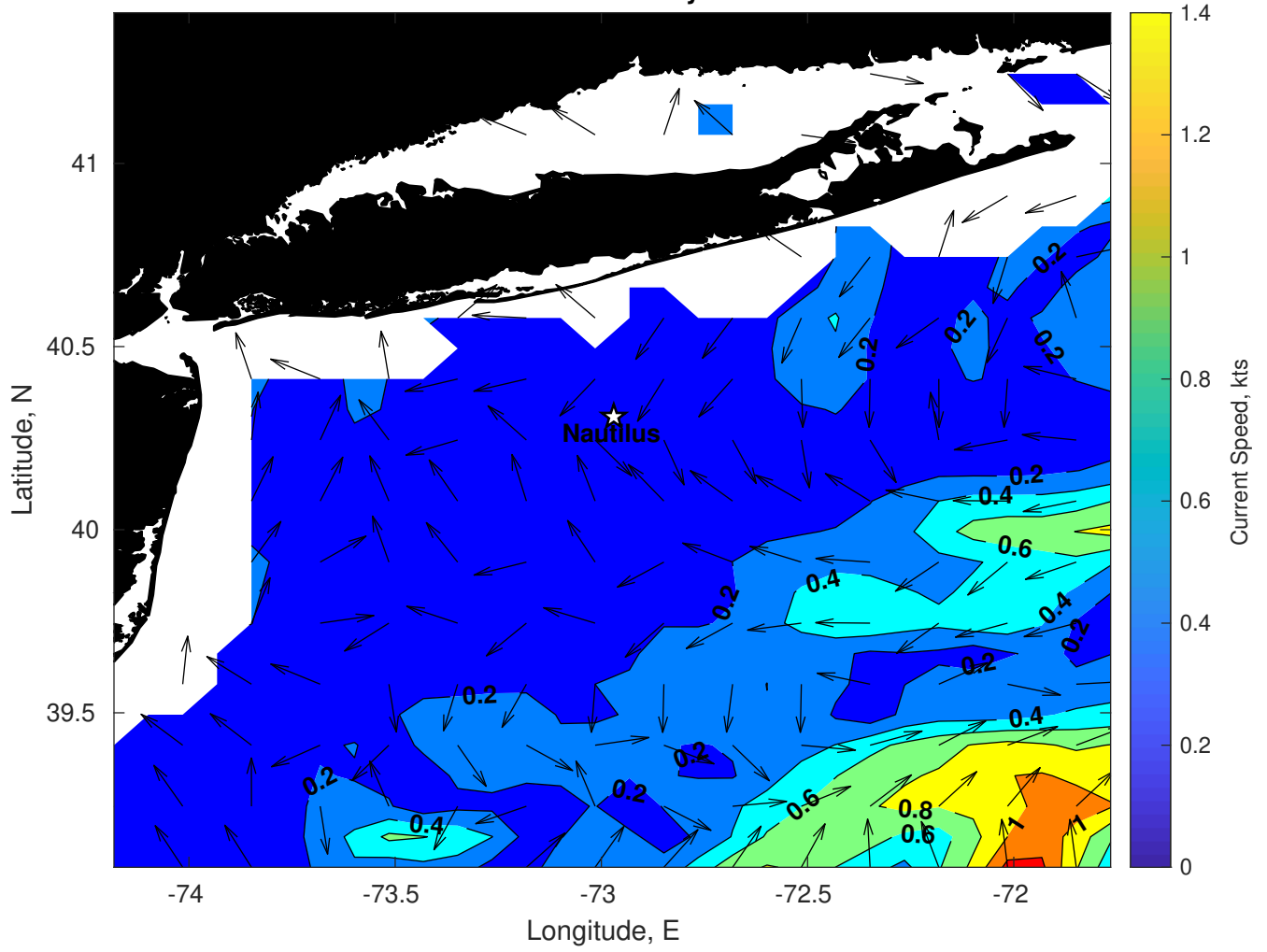
Wave Period (sec) for Nautilus at 03-May-2024 00:00:00



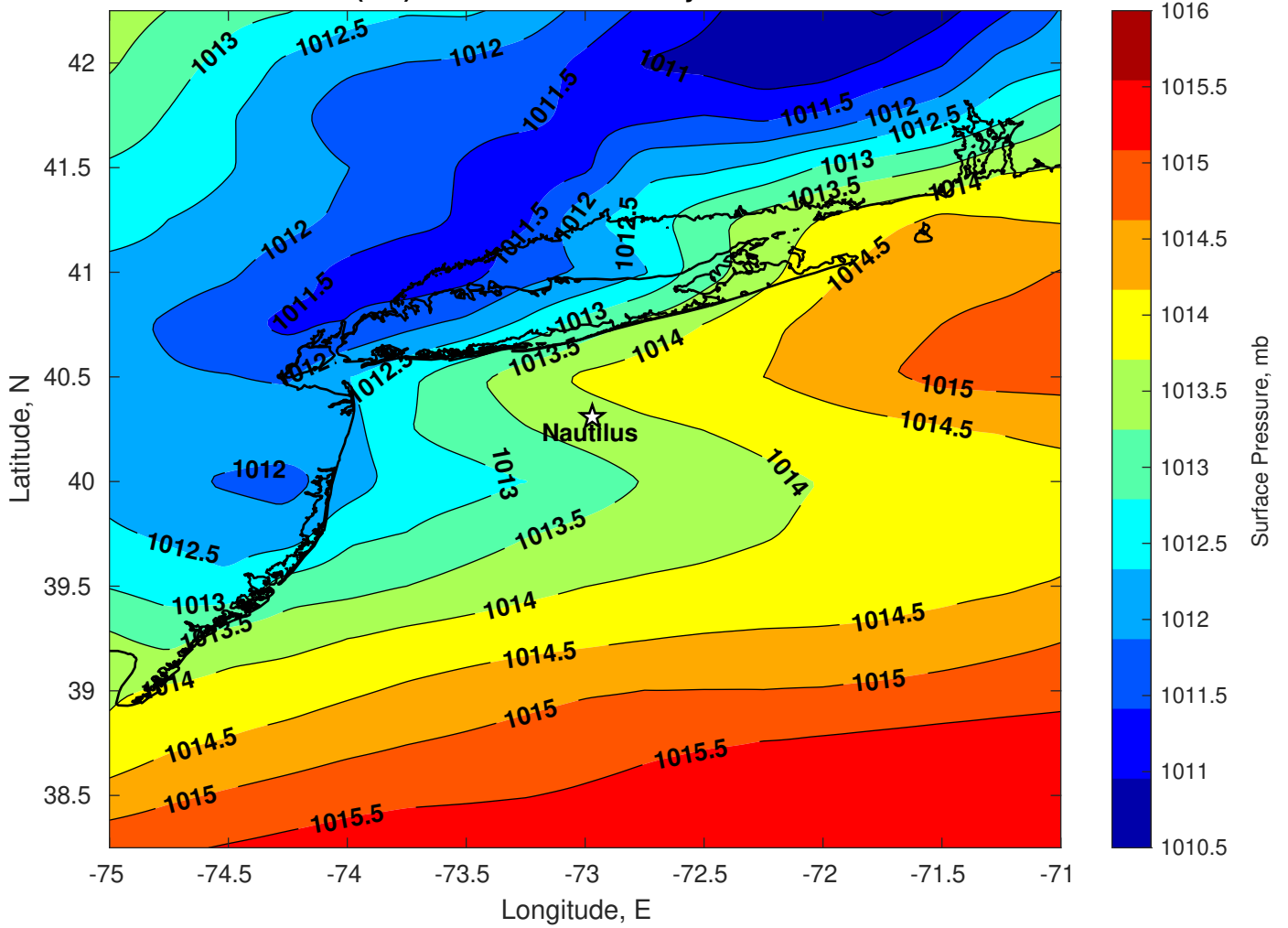
Winds (kts) for Nautilus at 03-May-2024 00:00:00



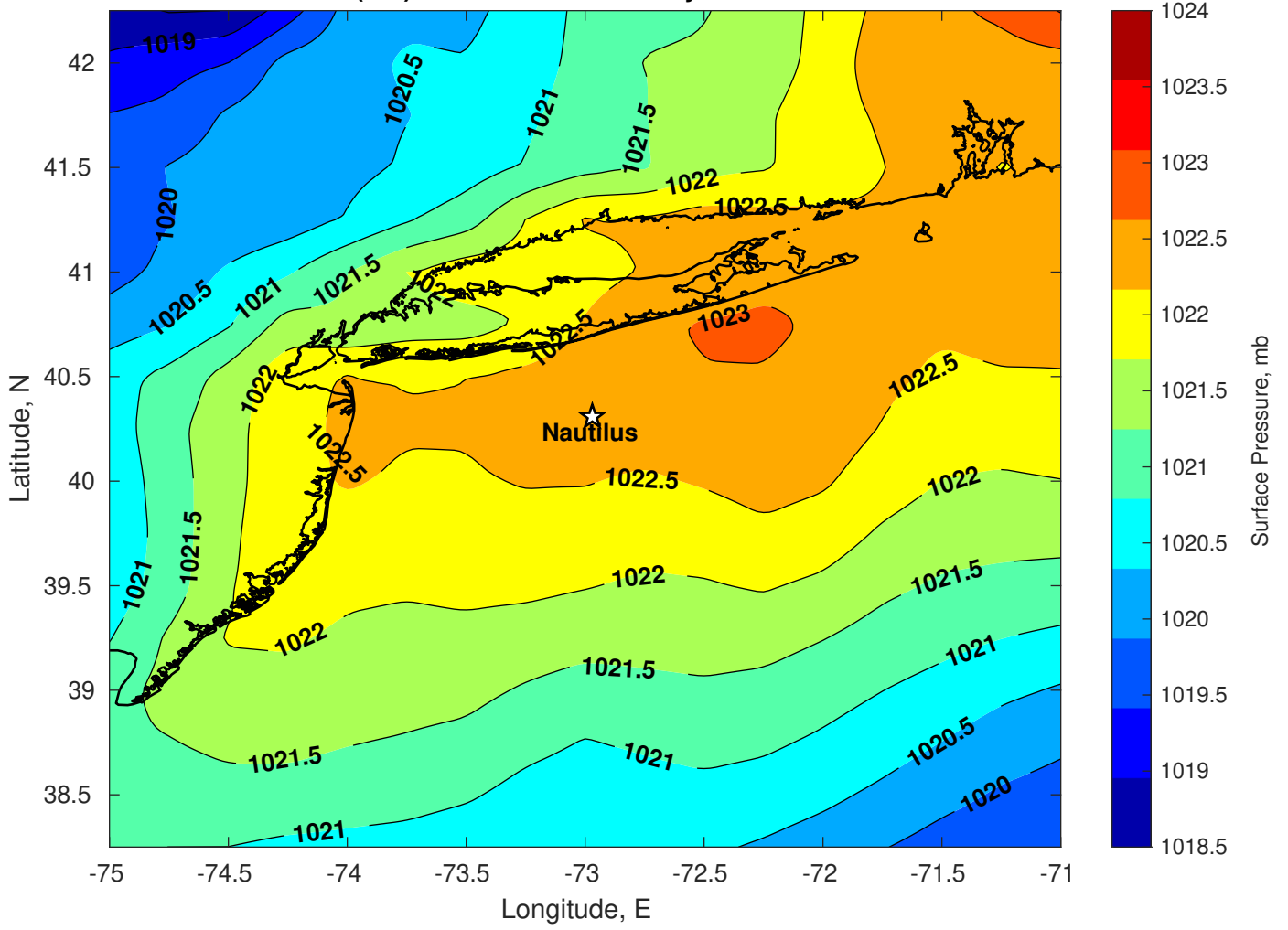
Surface Currents for Nautilus at 02-May-2024 00:00:00



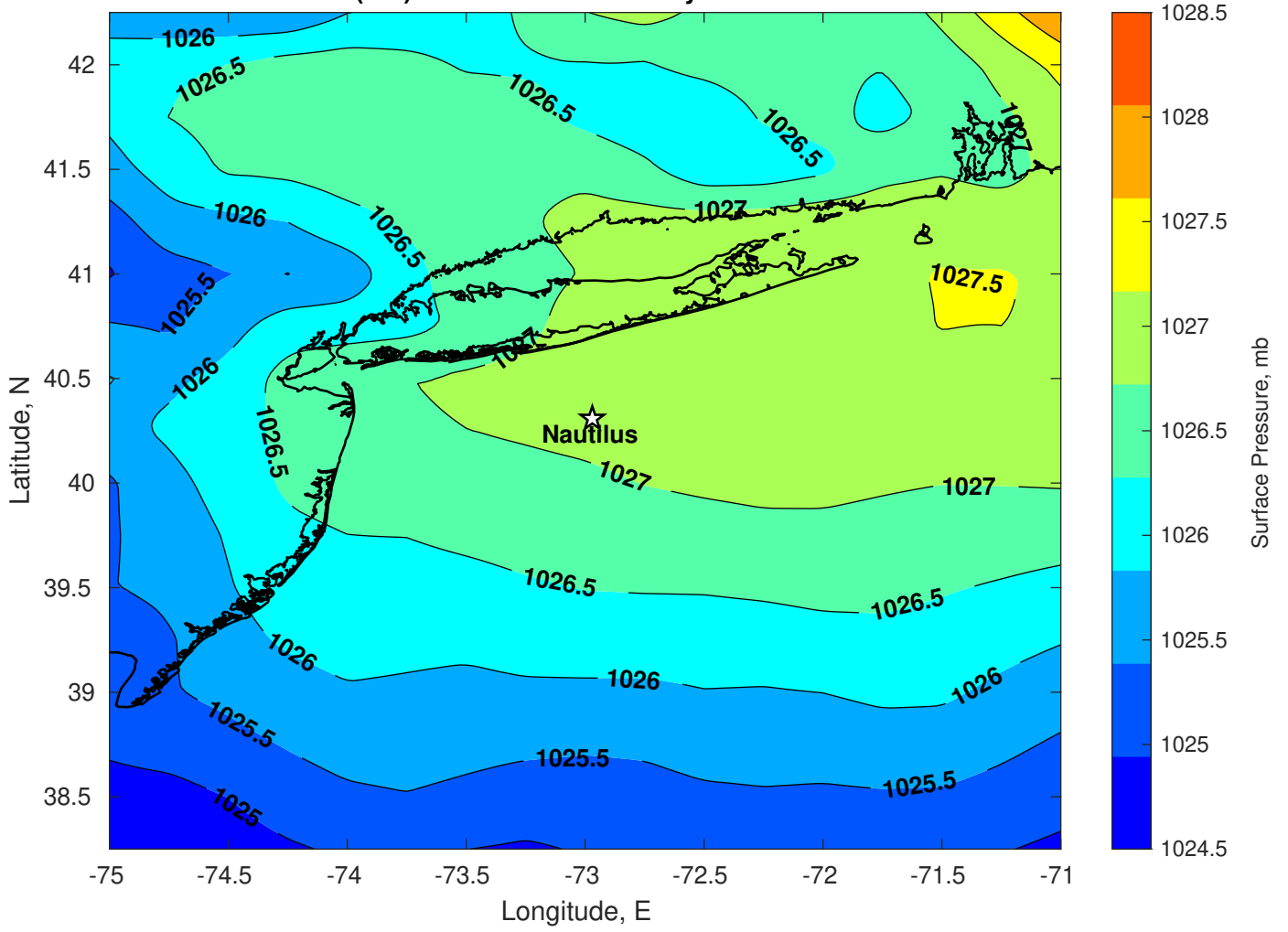
Surface Pressure (mb) for Nautilus at 02-May-2024 18:00:00



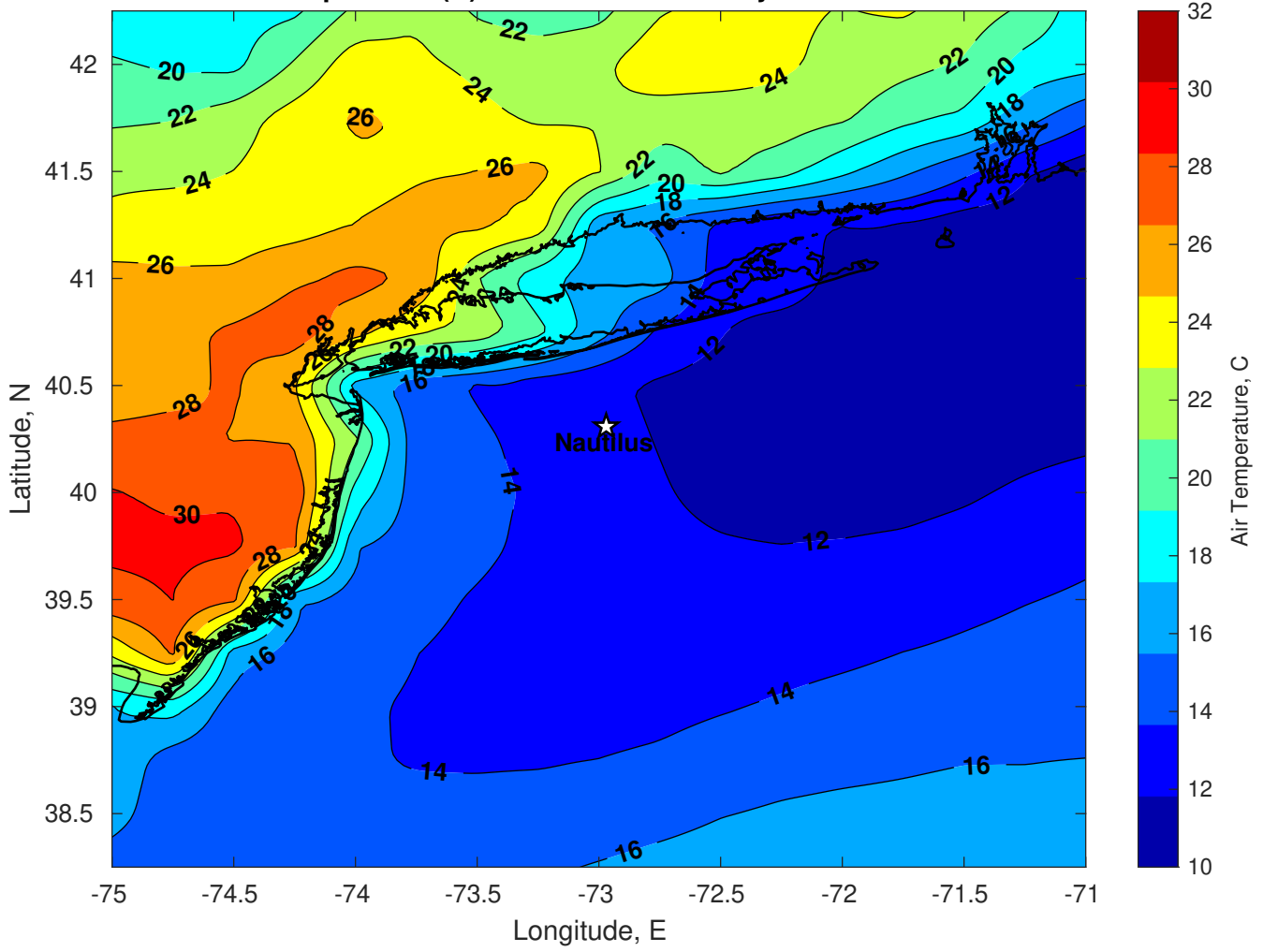
Surface Pressure (mb) for Nautilus at 03-May-2024 18:00:00



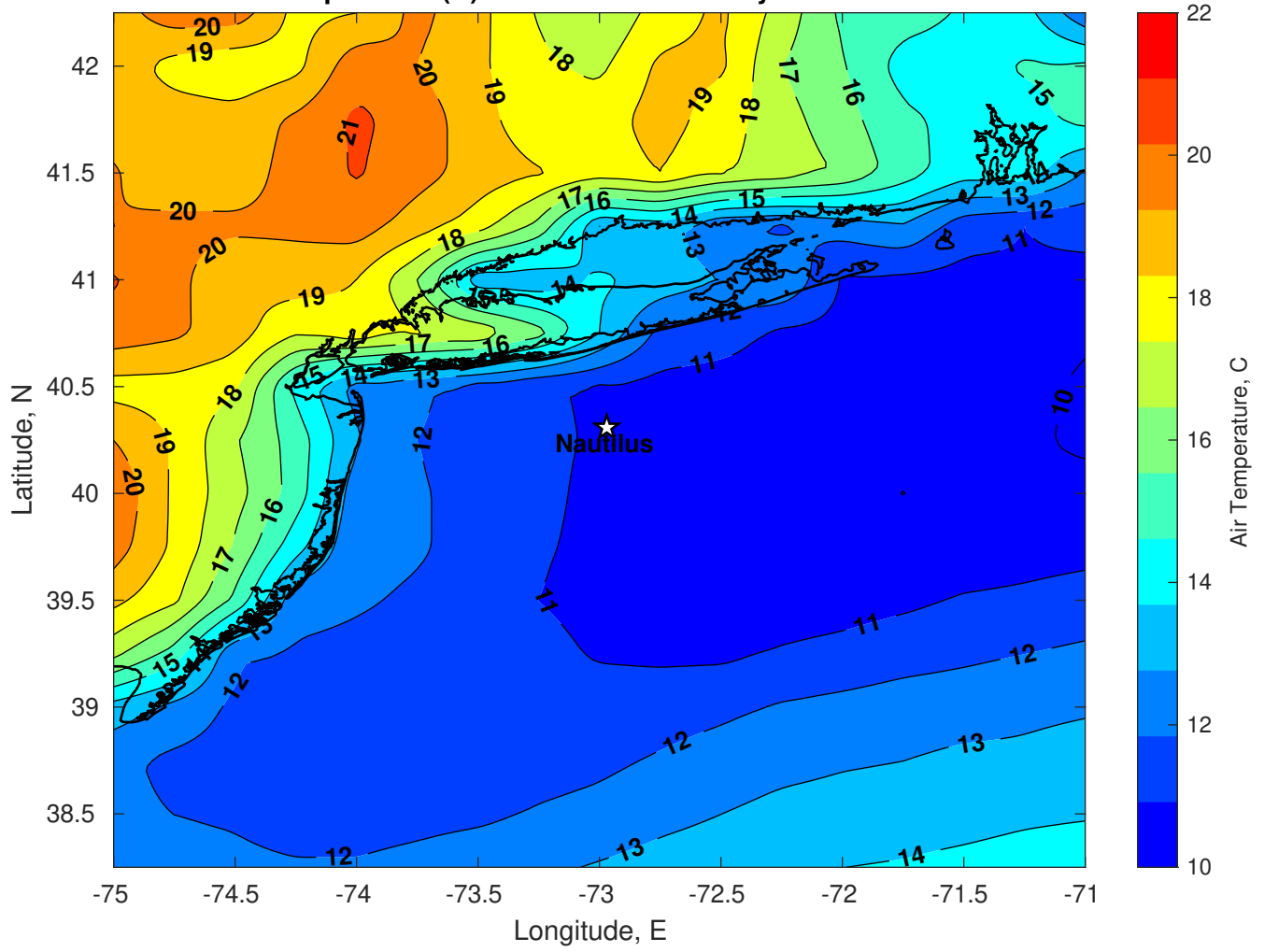
Surface Pressure (mb) for Nautilus at 04-May-2024 18:00:00



Air Temperature (C) for Nautilus at 02-May-2024



Air Temperature (C) for Nautilus at 02-May-2024



Air Temperature (C) for Nautilus at 02-May-2024

